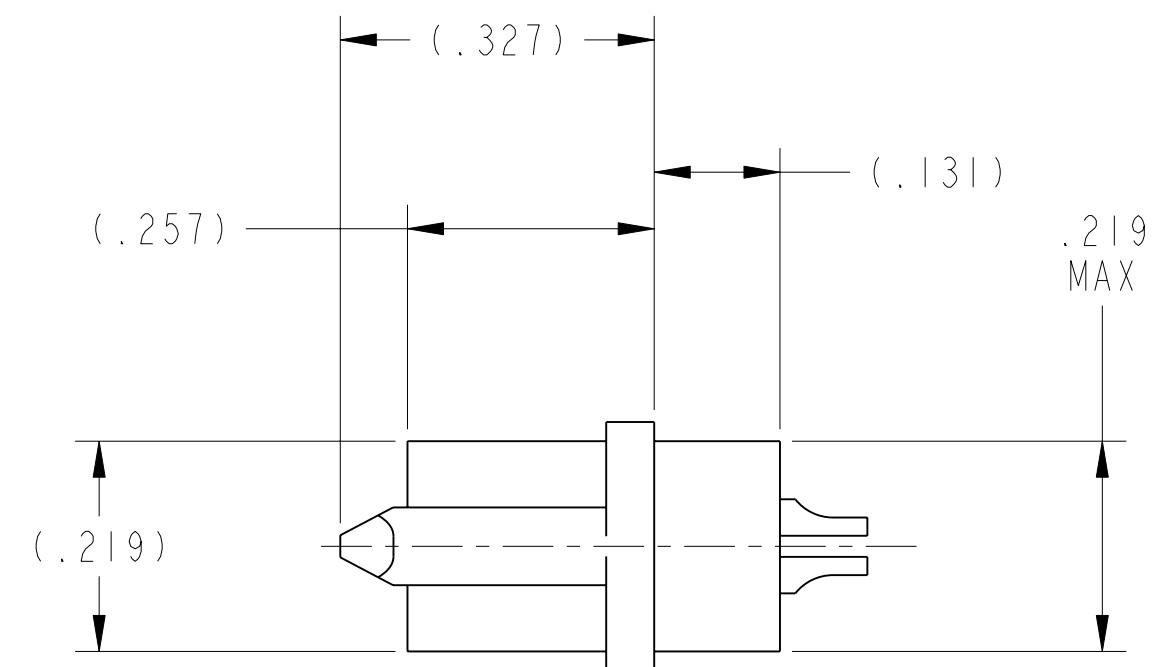
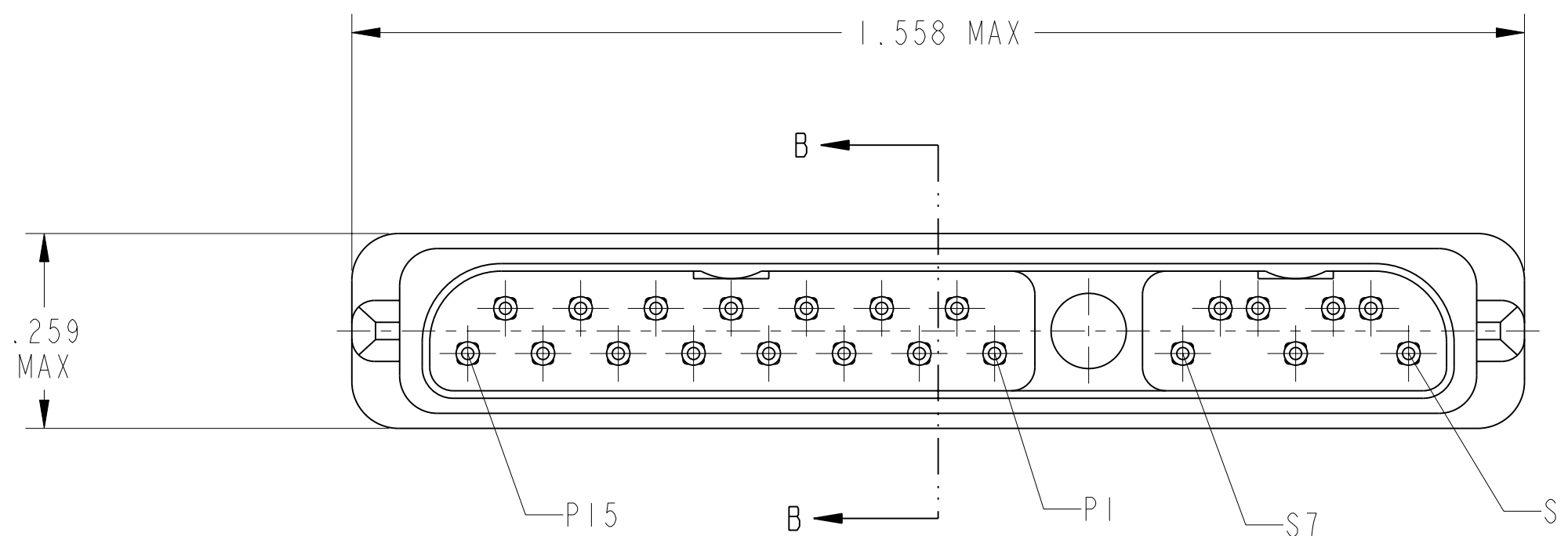
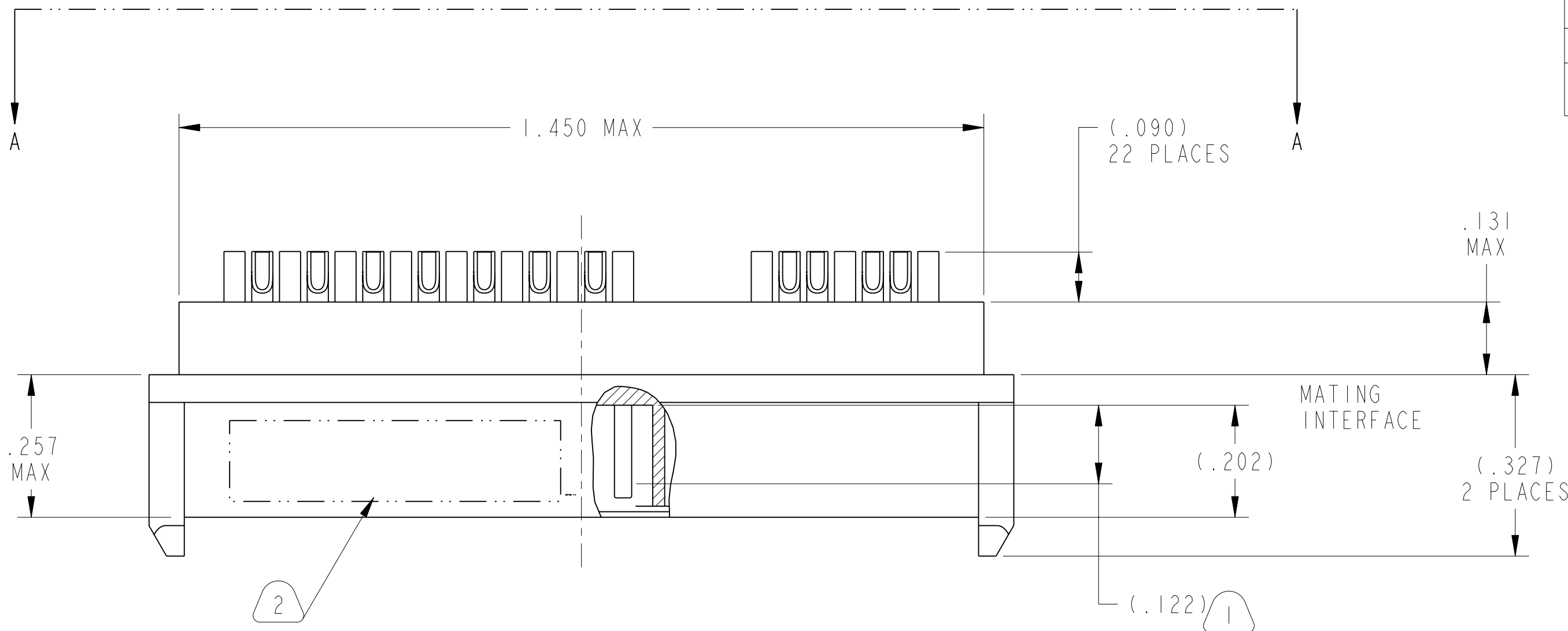


REV. PA1	SHEET 1 OF 2	RS2-RIOS22
M REVISIONS		
LTR	DESCRIPTION	DATE
PA1	INITIAL RELEASE	9/3/15



SEE SHEET 2

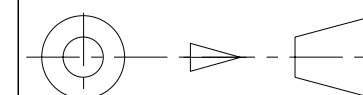
NOTES:

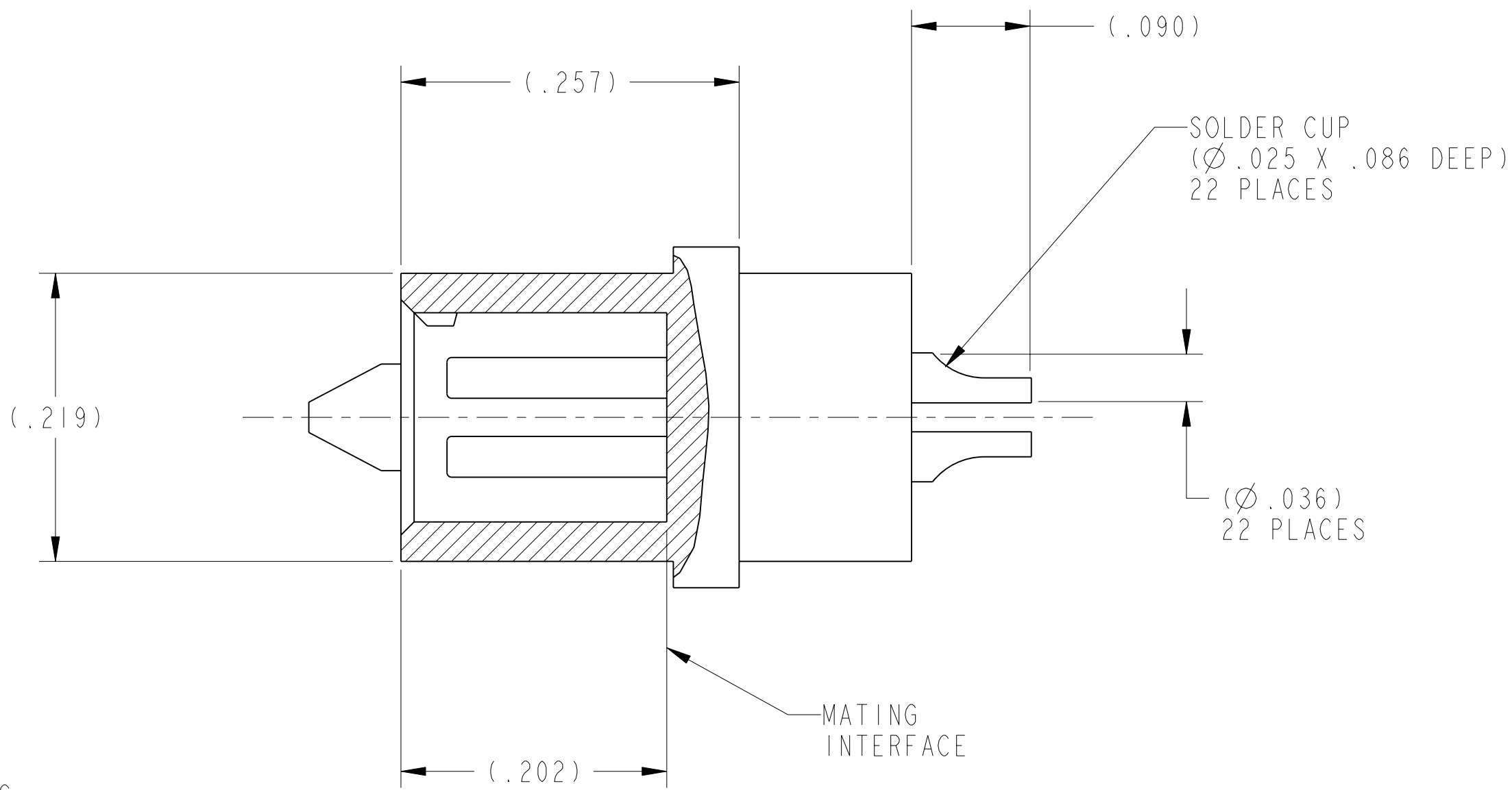
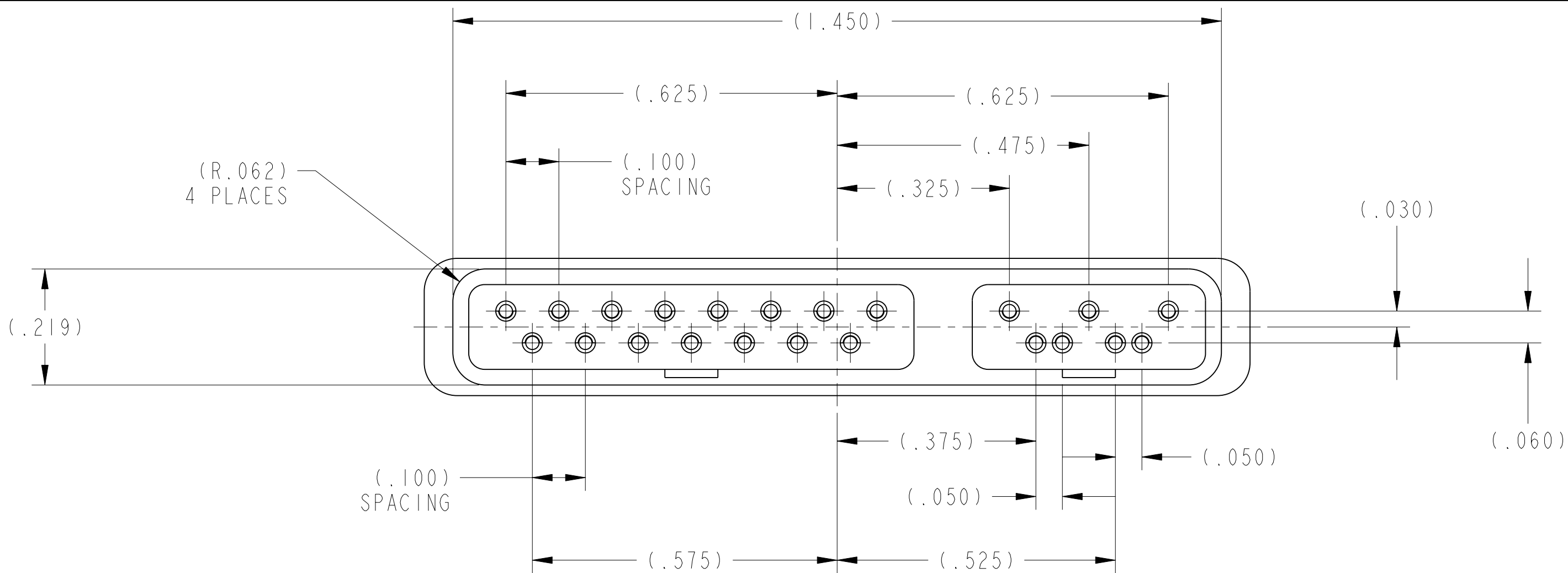
THE USE OF THIS DOCUMENT IS UNLIMITED. HOWEVER, DOCUMENTS REFERENCED HEREON MAY CONTAIN LIMITED RIGHTS DATA.

SCALE 5.000

N/A	PRO/ENGINEER INFORMATION
N/A	Pro/e Model Used: RS2-RIOS22-XXXX.ASSEMBLY
NEXT ASSEMBLY	Drawing Name: RS2-RIOS22-XXXX

UNLESS OTHERWISE SPECIFIED	SPECIFICATIONS	POS	QTY	PART NUMBER	DESCRIPTION	NOTE																		
LINEAR DIMENSIONS ARE IN INCHES TOLERANCES: .XXXX = ±.0005 ANGLES= ±2° .XXX = ±.010 .XX = ±.03 .X = ±.1 DIM. & TOL. PER ASME Y14.5M; DRM PER MIL-DTL-31000; OTHER Amphenol Sds. PER 9-3800 LEGENDS: =FLAG NOTE CALL OUT REFERENCE ONLY	MATERIAL SPEC.	<table border="1"> <tr> <td colspan="2">APPROVALS</td> <td>DATE</td> <td colspan="3">PARTS LIST</td> </tr> <tr> <td>PREPARED BY R. CHAPMAN</td> <td>ENGINEER IN CHARGE J. PAUL</td> <td>03-Sep-15</td> <td colspan="3"> <b>AMPHENOL CORPORATION</b>            40-60 DELAWARE AVENUE            SIDNEY, N.Y. 13838         </td> </tr> <tr> <td>DESIGN MANAGER R. SELFRIDGE</td> <td>DESIGN ACTIVITY GROUP BLP</td> <td></td> <td colspan="3"> <b>CONNECTOR, ELECTRICAL, RECEPTACLE,            R-SATA, 22 POSITION            (SOLDER CUP TERMINATION)</b> </td> </tr> </table>					APPROVALS		DATE	PARTS LIST			PREPARED BY R. CHAPMAN	ENGINEER IN CHARGE J. PAUL	03-Sep-15	<b>AMPHENOL CORPORATION</b> 40-60 DELAWARE AVENUE SIDNEY, N.Y. 13838			DESIGN MANAGER R. SELFRIDGE	DESIGN ACTIVITY GROUP BLP		<b>CONNECTOR, ELECTRICAL, RECEPTACLE,            R-SATA, 22 POSITION            (SOLDER CUP TERMINATION)</b>		
	APPROVALS						DATE	PARTS LIST																
PREPARED BY R. CHAPMAN	ENGINEER IN CHARGE J. PAUL	03-Sep-15	<b>AMPHENOL CORPORATION</b> 40-60 DELAWARE AVENUE SIDNEY, N.Y. 13838																					
DESIGN MANAGER R. SELFRIDGE	DESIGN ACTIVITY GROUP BLP		<b>CONNECTOR, ELECTRICAL, RECEPTACLE,            R-SATA, 22 POSITION            (SOLDER CUP TERMINATION)</b>																					
PROCESS SPEC.	9-3856-5 9-3895	<table border="1"> <tr> <td>SIZE <b>C</b></td> <td>CAGE CODE <b>77820</b></td> <td>DOCUMENT NO. <b>RS2-RIOS22</b></td> <td>REV. <b>PA1</b></td> <td colspan="2">SCALE: 2.0 REF: NONE SHEET 1 OF 2</td> </tr> </table>					SIZE <b>C</b>	CAGE CODE <b>77820</b>	DOCUMENT NO. <b>RS2-RIOS22</b>	REV. <b>PA1</b>	SCALE: 2.0 REF: NONE SHEET 1 OF 2													
SIZE <b>C</b>	CAGE CODE <b>77820</b>	DOCUMENT NO. <b>RS2-RIOS22</b>	REV. <b>PA1</b>	SCALE: 2.0 REF: NONE SHEET 1 OF 2																				





3. FOR MATING PLUG CONNECTOR SEE DRAWING RS2-PRCE22-( ) AND OTHERS.

2. INK STAMP IN CONTRASTING COLOR "AMPHENOL" 77820 PART NUMBER AND DATE CODE ON INDICATED SURFACE (MAY BE ON BOTH SIDES) PER 9-3856-5. DATE CODE PER 9-3895. CHARACTERS TO BE .062±.020 HIGH. ADDITIONAL INFORMATION MAY BE REQUESTED ON PURCHASE ORDER.  
EXAMPLE: AMPHENOL 77820 RS2-RIOS22 1515

1. INDICATED DIMENSION IS TO POINT OF ELECTRICAL ENGAGEMENT.

THE USE OF THIS DOCUMENT IS UNLIMITED. HOWEVER, DOCUMENTS REFERENCED HEREON MAY CONTAIN LIMITED RIGHTS DATA.

DOCUMENT NO. RS2-RIOS22 SHEET 2 OF 2 REV. PA1

DOCUMENT NO. RS2-RIOS22 SHEET 2 OF 2 REV. PA1