

REV. PA1	SHEET 1 OF 3	DOCUMENT NO. 10-504637-008
REVISIONS		
LTR	DESCRIPTION	DATE
PA1	INITIAL RELEASE	10/19/15

10-504637-008

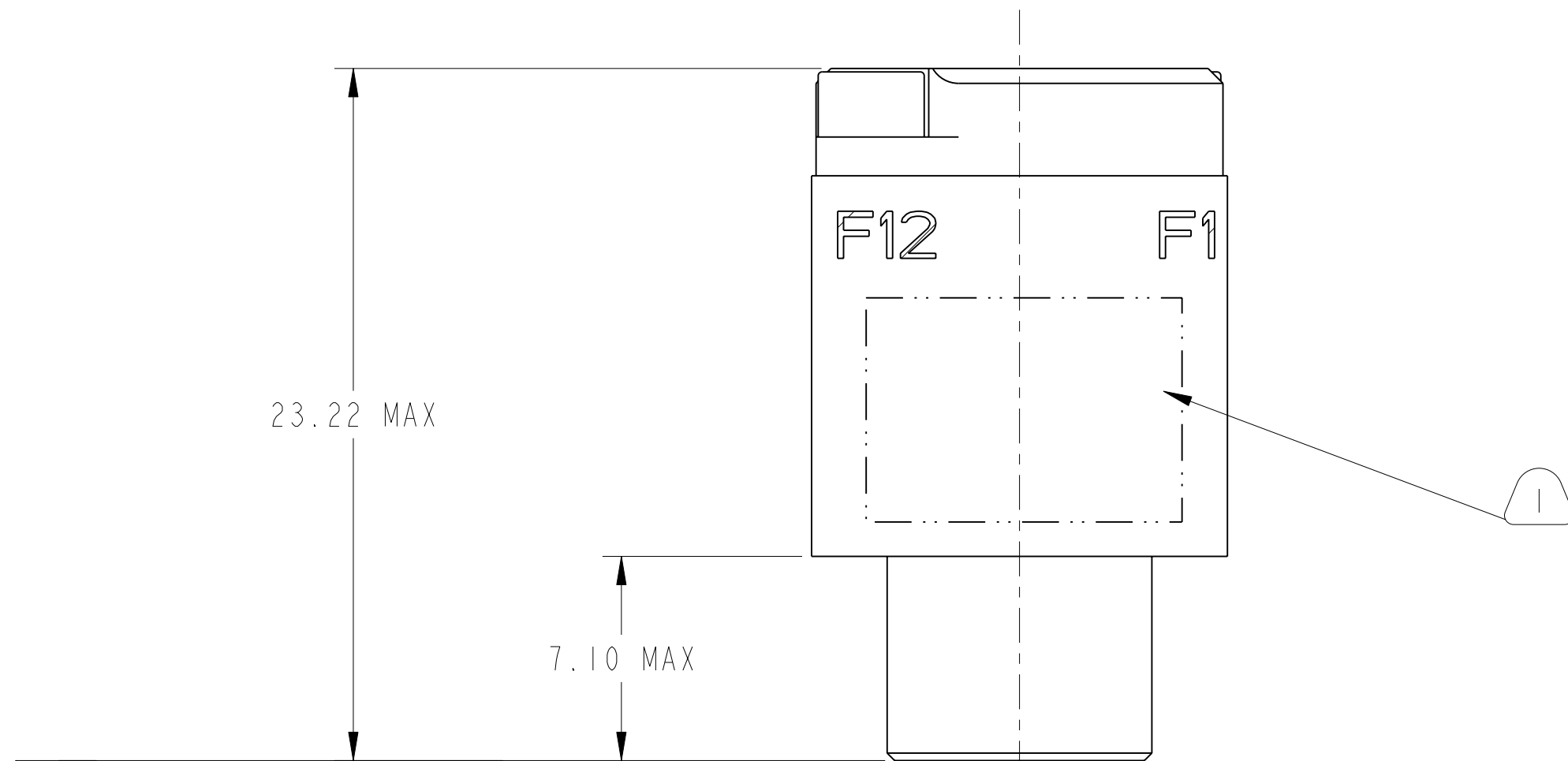
SHEET 1 OF 3

REV. PA1

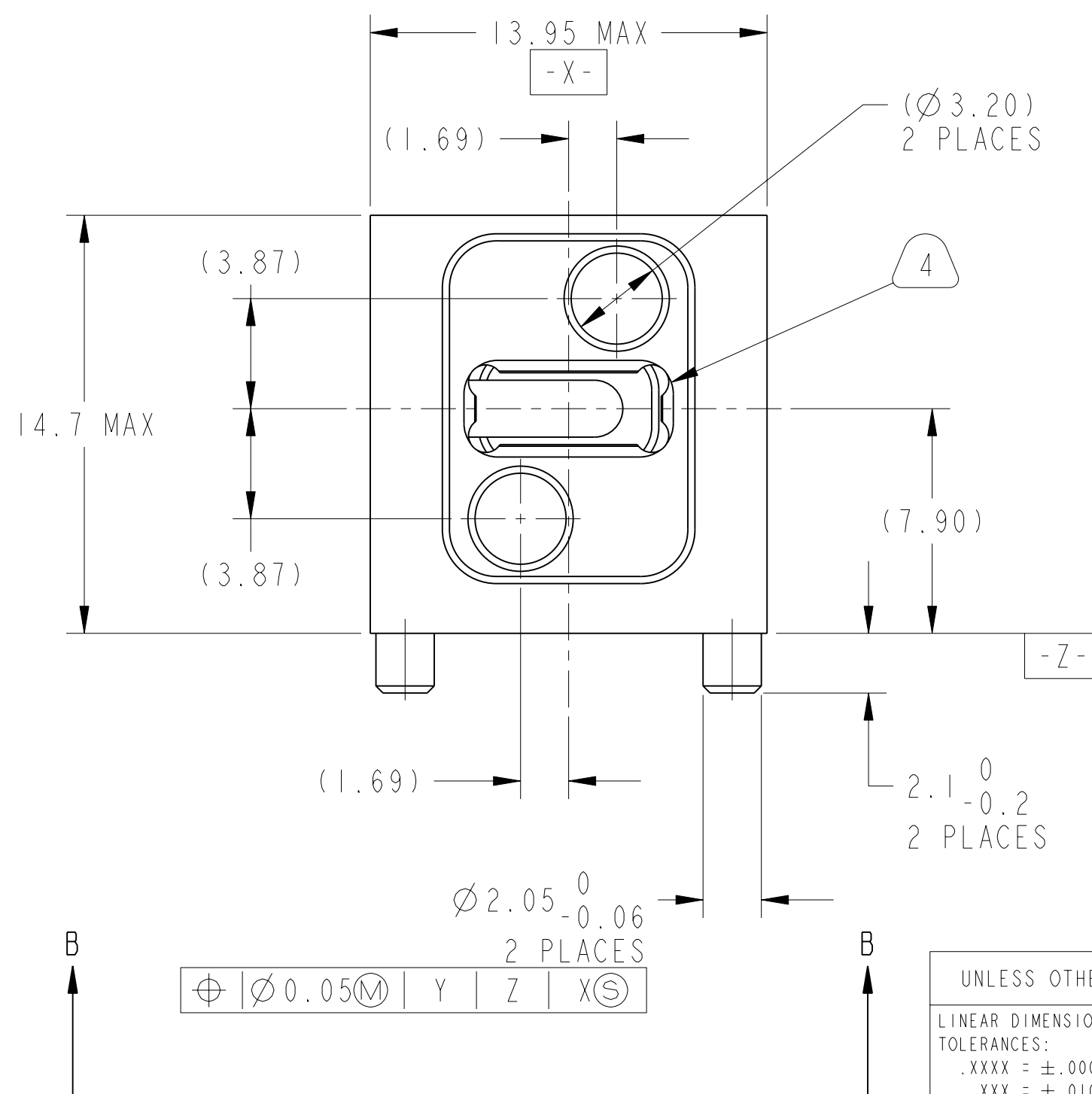
C

B

A



-Y-



-Z-

\varnothing	$\varnothing 0.05$	M	Y	Z	X	S
---------------	--------------------	---	---	---	---	---

SCALE 5.000

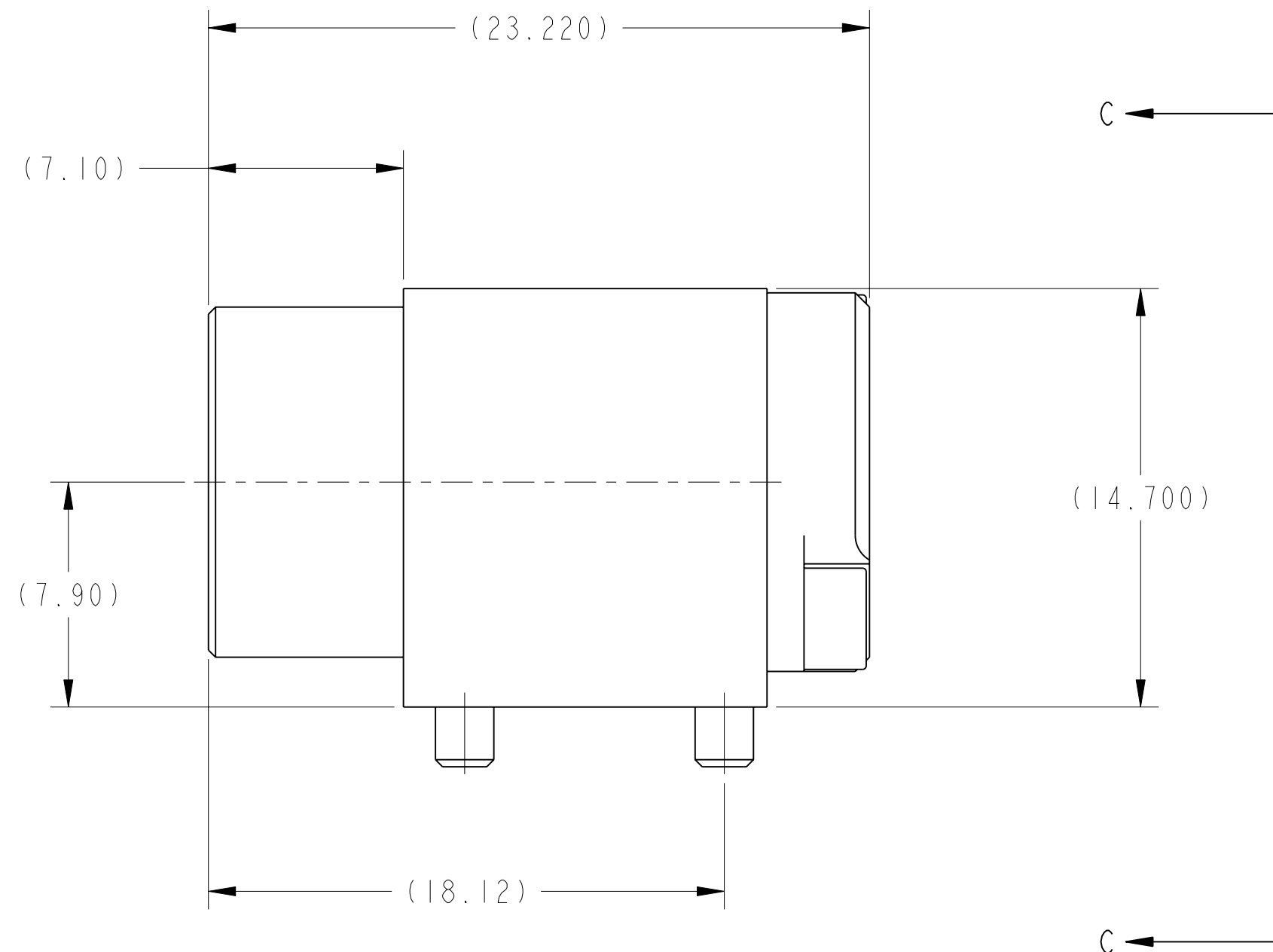
SEE SHEET 2

NOTES:

THE USE OF THIS DOCUMENT IS UNLIMITED. HOWEVER, DOCUMENTS REFERENCED HEREON MAY CONTAIN LIMITED RIGHTS DATA.

N/A	PRO/ENGINEER INFORMATION
N/A	Pro/e Model Used: 10-504637-008.DWG.ASSEM
NEXT ASSEMBLY	Drawing Name: 10-504637-008

UNLESS OTHERWISE SPECIFIED	SPECIFICATIONS	POS	QTY	PART NUMBER	DESCRIPTION	NOTE
LINEAR DIMENSIONS ARE IN INCHES TOLERANCES: .XXXX = ± 0.0005 ANGLES = $\pm 2^\circ$.XXX = ± 0.010 .XX = ± 0.03 .X = ± 0.1	MATERIAL SPEC.	APPROVALS		DATE	PARTS LIST	
	NA	PREPARED BY R. CHAPMAN	DESIGN MANAGER R. SELFRIDGE	19-0c1-15	AMPHENOL CORPORATION 40-60 DELAWARE AVENUE SIDNEY, N.Y. 13838 CONNECTOR, FIBER OPTIC, MODULE, 1 MT (VITA 66.4)	
DIM. & TOL. PER ASME Y14.5M; DRM PER MIL-DTL-31000; OTHER Amphenol Sds. PER 9-3800 LEGENDS: = FLAG NOTE CALL OUT REFERENCE ONLY	PROCESS SPEC.	THIRD ANGLE PROJECTION		SCALE: 3.0	CAGE CODE 77820	DOCUMENT NO. 10-504637-008
	9-3856-5 9-3895			REF: NA	REV. PA1	SHEET 1 OF 3

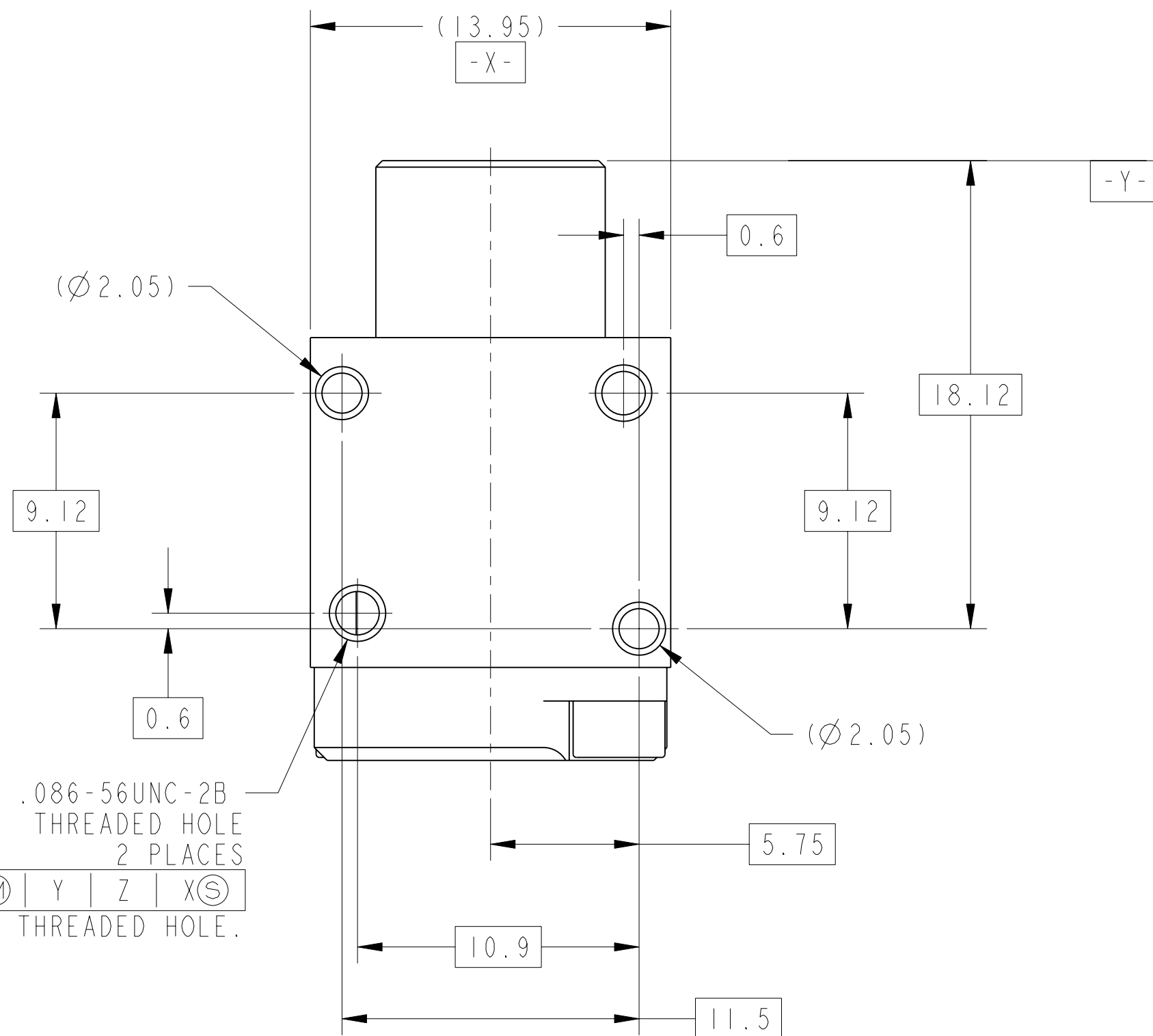


10-504637-008

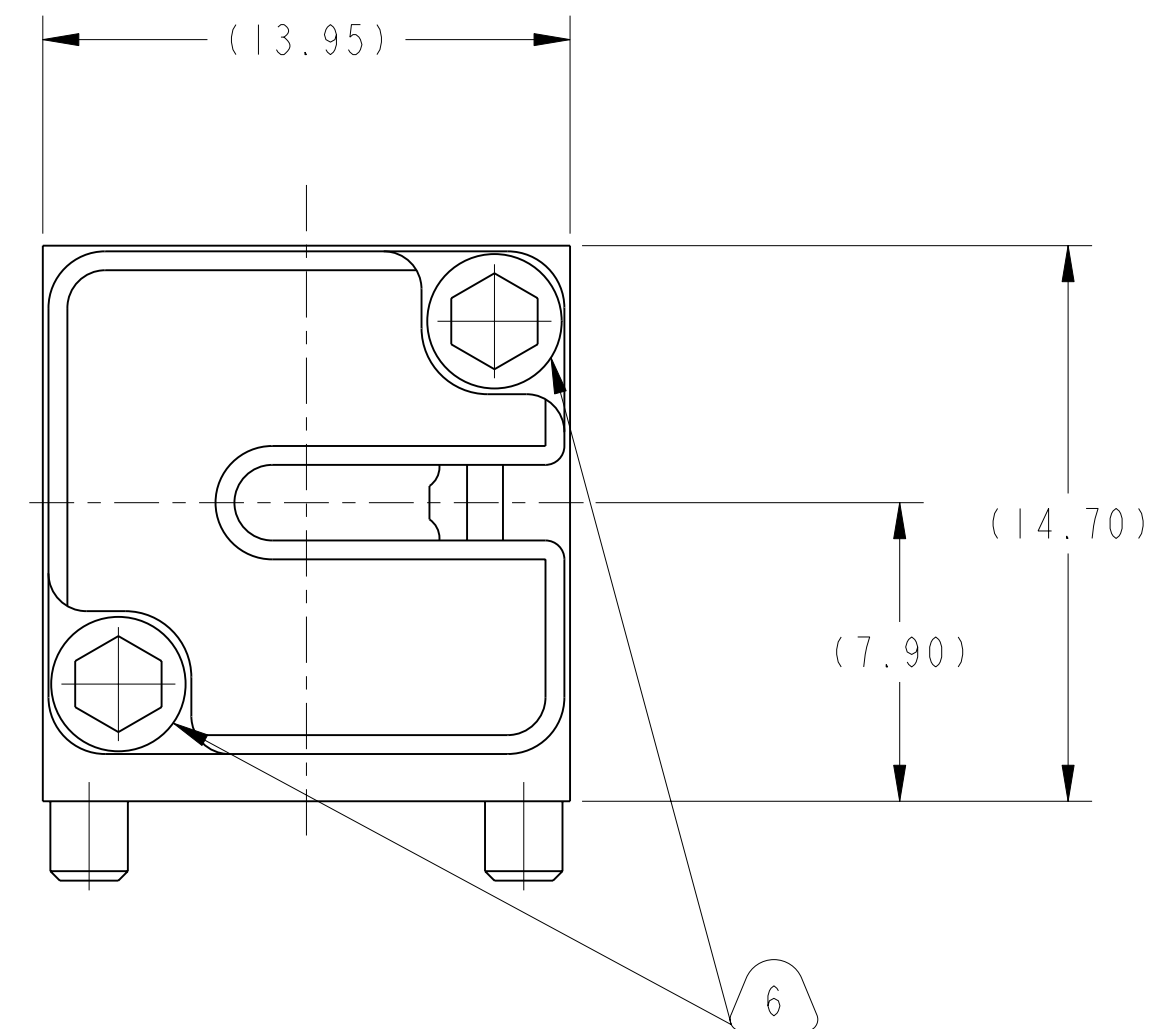
SHEET 1 OF 3

REV. PA1

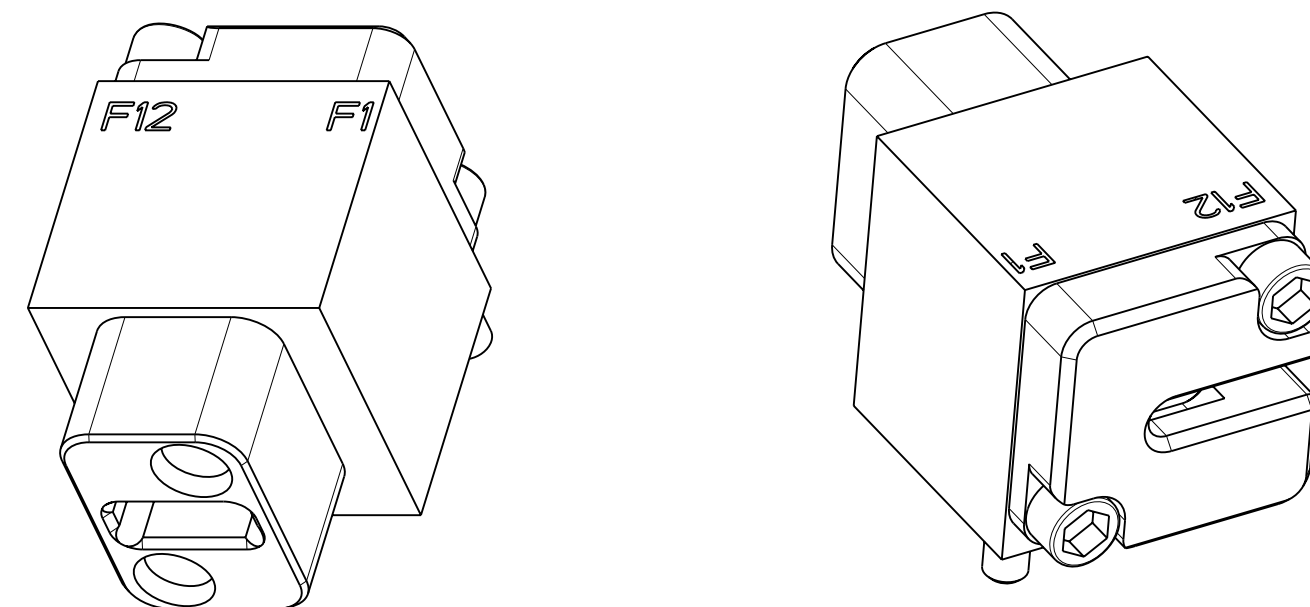
A



VIEW AT B



VIEW AT C



7. RETAINER SCREWS TO BE TIGHTENED TO A TORQUE OF 2 -3 IN-LBS. RETAINER SHOULD BE BOTTOMED ON CONNECTOR BODY.
6. MT PIN CLAMP ASSEMBLIES ARE SHIPPED UNASSEMBLED.
4. INSERT CAVITY IS FOR A FIBER OPTIC MT FERRULE PER IEC 1754-5-4. MT FERRULES AND ASSOCIATED RIBBON CABLE ARE NOT PART OF THIS ASSEMBLY. GUIDE PINS FOR MT FERRULES ARE INCLUDED IN THE ASSEMBLY.
3. FOR CONNECTOR INSTALLATION ILLUSTRATION SEE SHEET 3.
2. FOR MATING BACKPLANE CONNECTOR ASSEMBLY, SEE DRAWING 10-504639-006.
1. BLACK INK STAMP PART NUMBER AND DATE CODE ON INDICATED SURFACE PER 9-3856-5. DATE CODE PER 9-3895. CHARACTERS TO BE .062±.020 HIGH. ADDITIONAL INFORMATION MAY BE REQUESTED BY PURCHASE ORDER. STAMPING CAN BE ON BOTH SIDES OF PART.

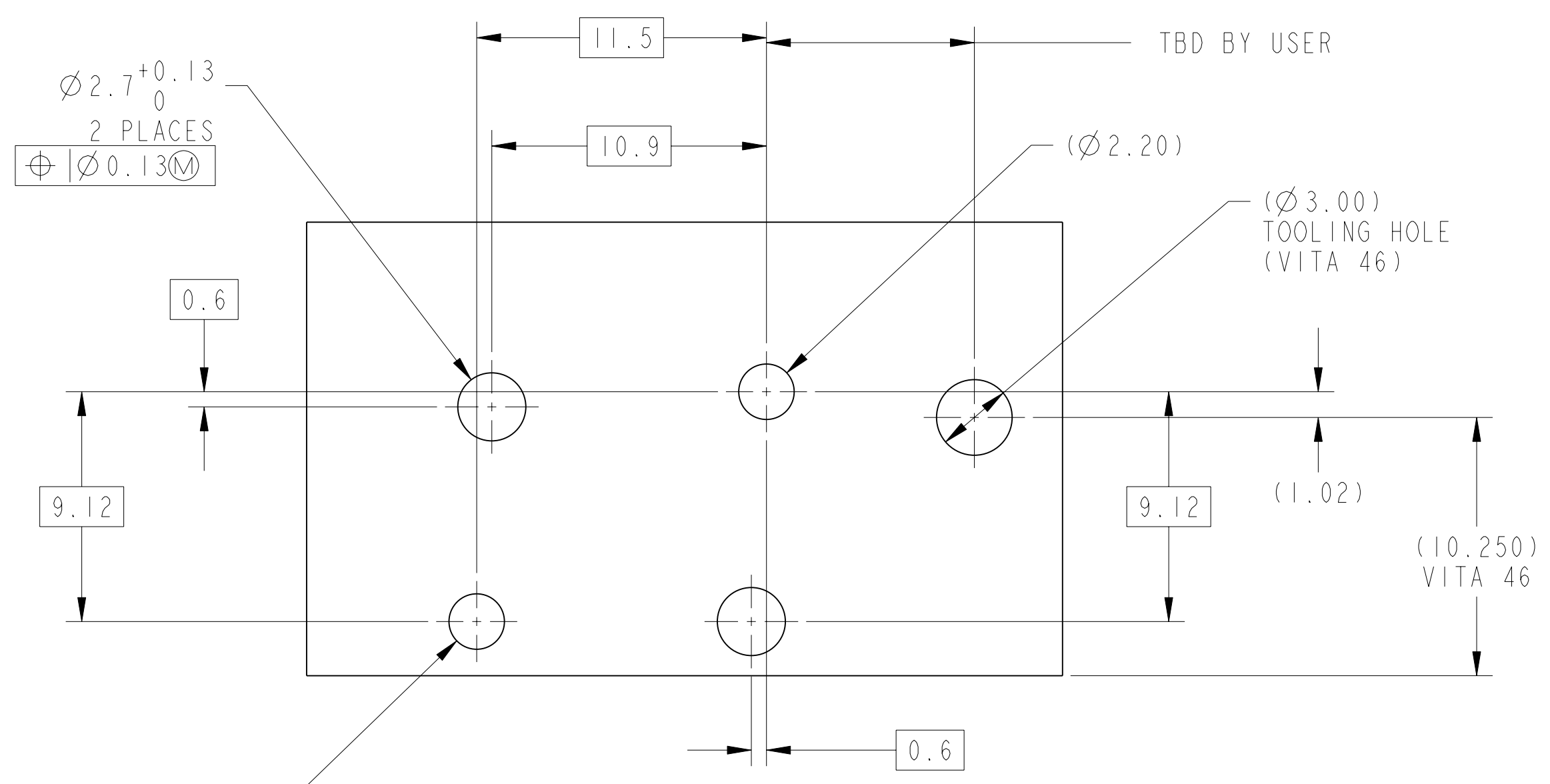
MATERIALS AND FINISHES

COMPONENT	MATERIAL/ FINISH
MAIN BODY	BODY - MATERIAL - ALUM. ALLOY PER AMS 4150 FINISH - CHROMATE TREATMENT PER MIL-C-5541, CL 3 HELICAL INSERTS - STAINLESS STEEL 304 SERIES PASSIVATED
MT RETAINER	BODY - MATERIAL - ALUM. ALLOY PER AMS 4150 FINISH - CHROMATE TREATMENT PER MIL-C-5541, CL 3 SCREW - STAINLESS STEEL 300 SERIES PASSIVATED
PIN CLAMP ASSEMBLY	BODY - GLASS FILLED LIQUID CRYSTAL POLYMER ALIGNMENT PINS - STAINLESS STEEL 303 SERIES, PASSIVATED

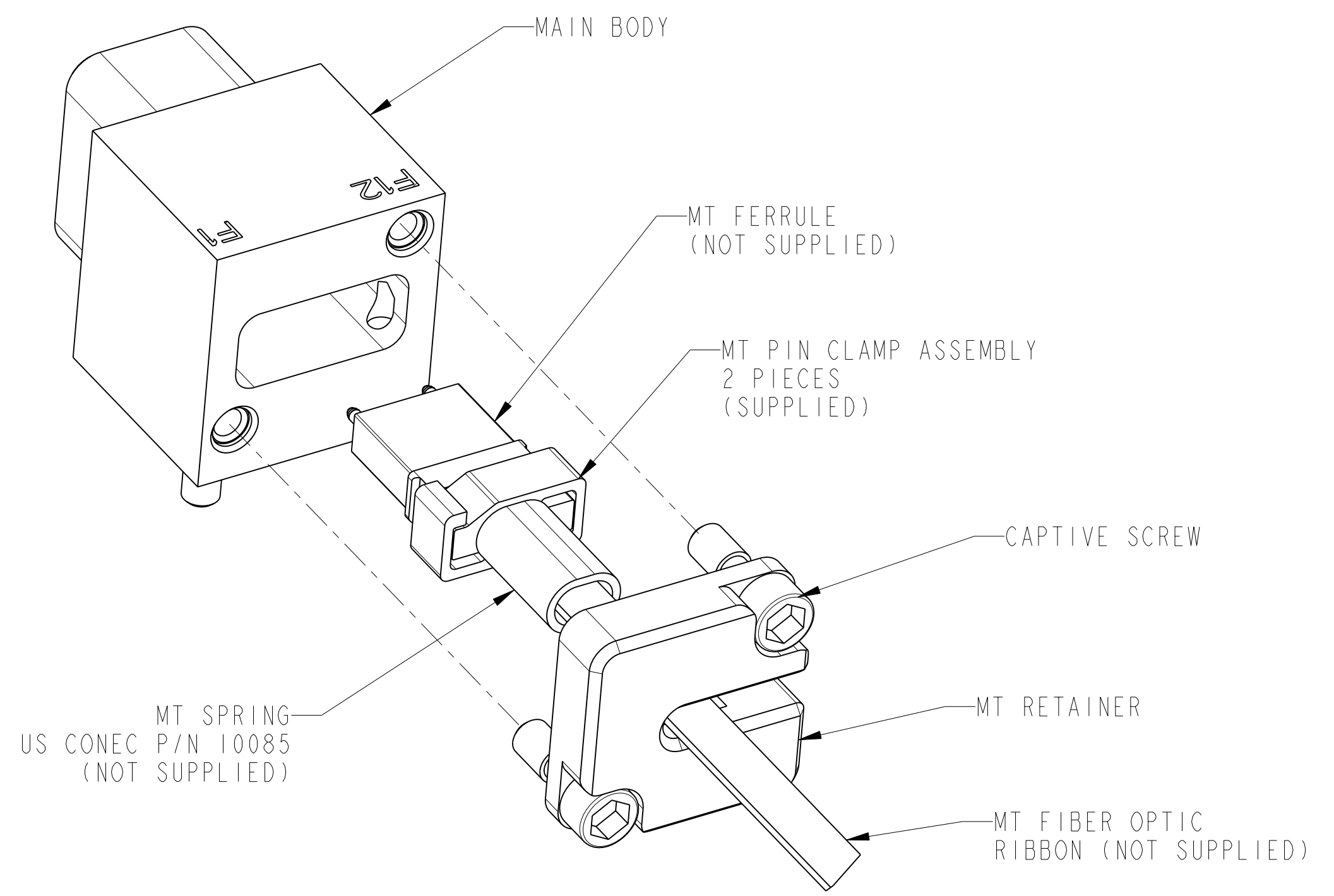
THE USE OF THIS DOCUMENT IS UNLIMITED. HOWEVER, DOCUMENTS REFERENCED HEREON MAY CONTAIN LIMITED RIGHTS DATA.

SIZE C	CAGE CODE 77820	DOCUMENT NO. 10-504637-008	REV. PA1
SCALE: 3.0	REF: NA	SHEET 2 OF 3	

10-504637-008 DOCUMENT NO. SHEET 3 OF 3 REV. PA1



SUGGESTED MODULE PCB INTERFACE DIMENSIONS
SCALE 5.000



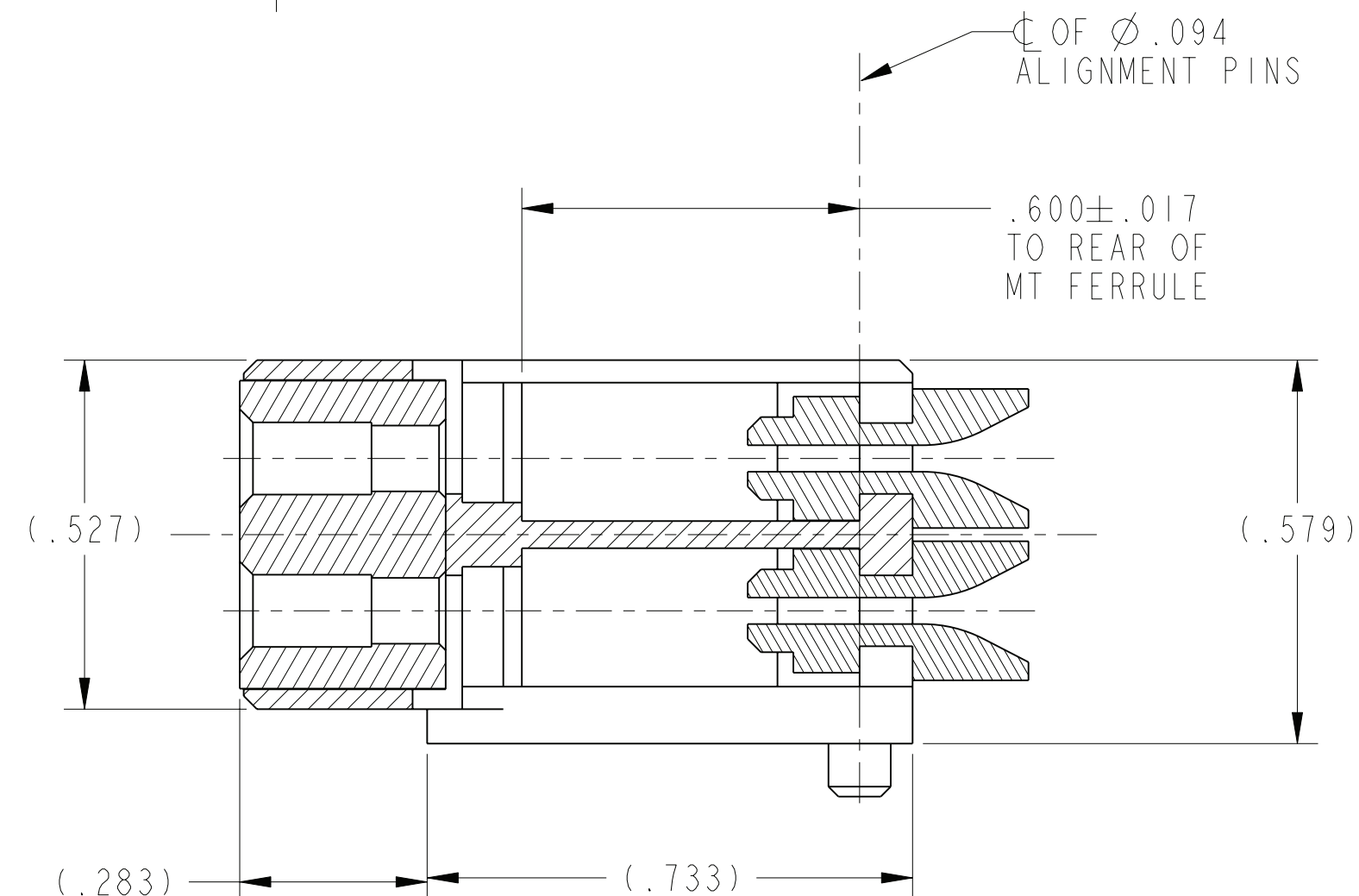
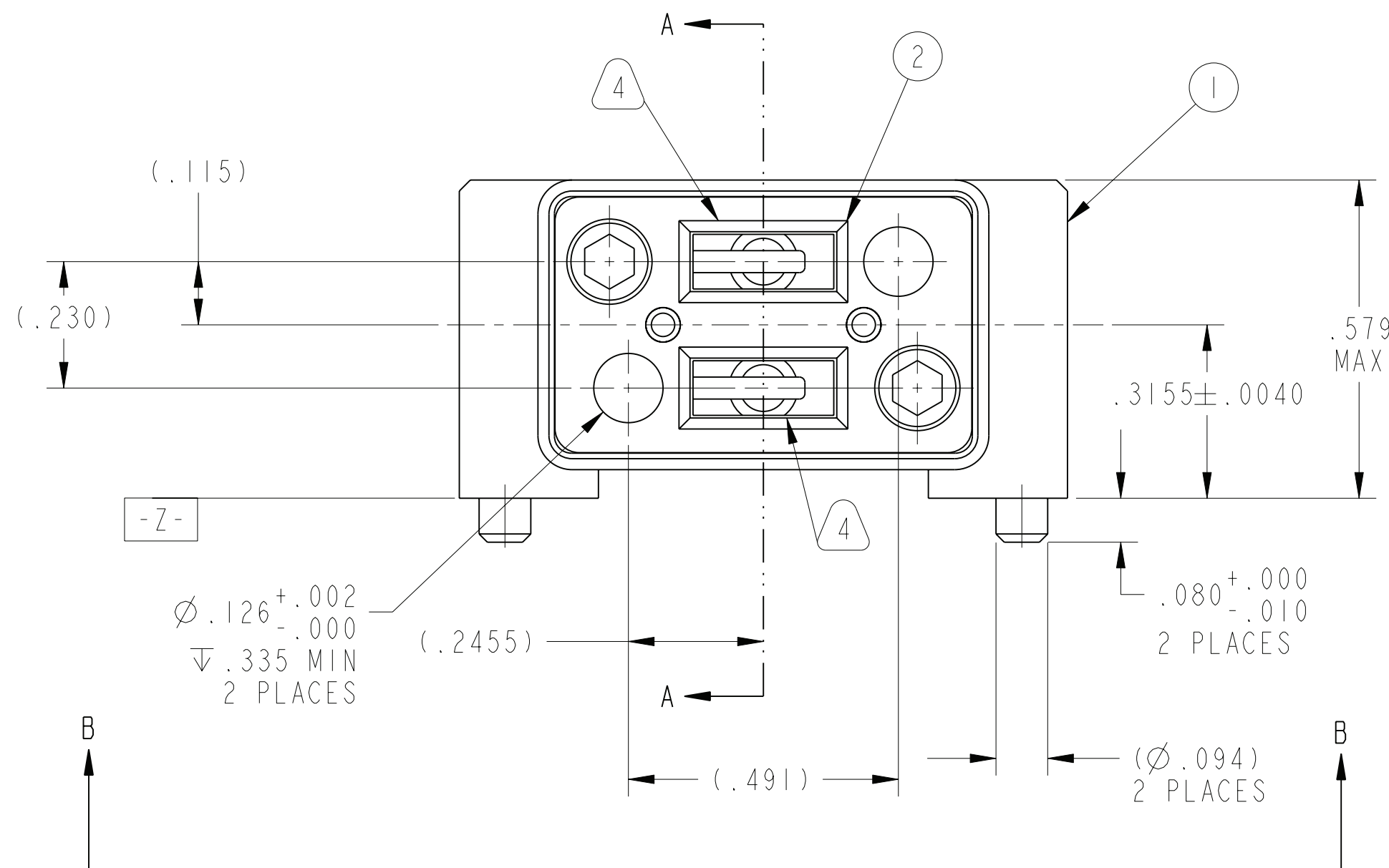
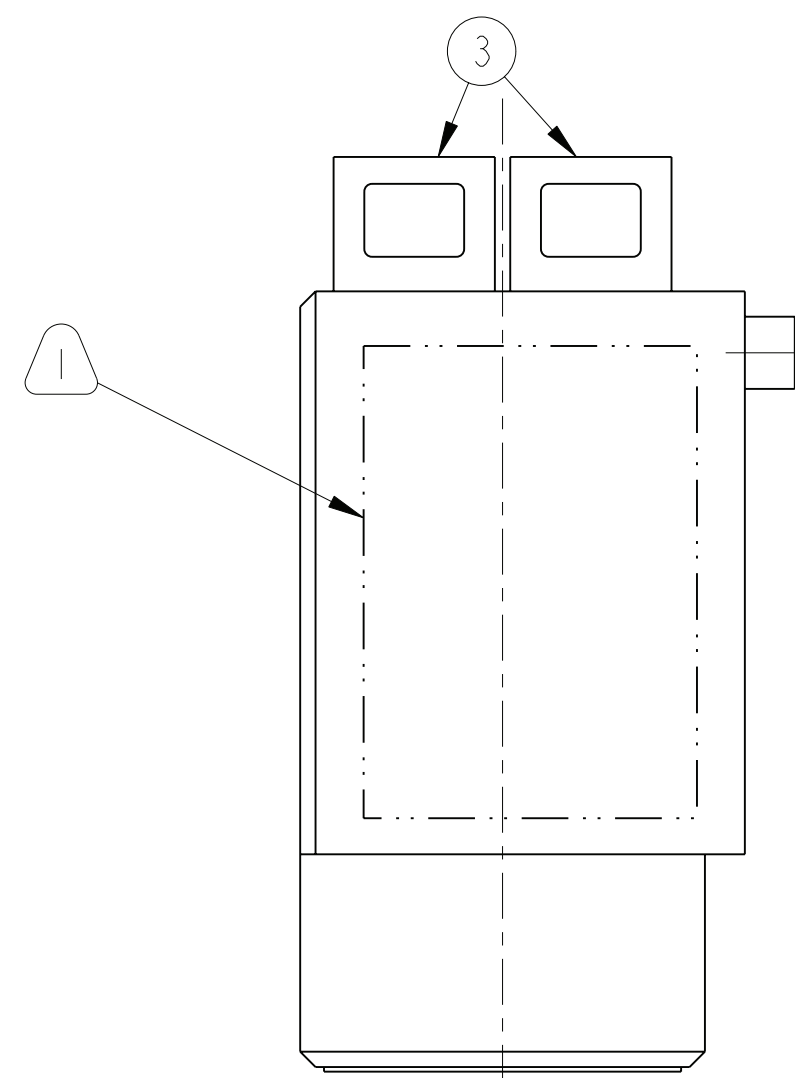
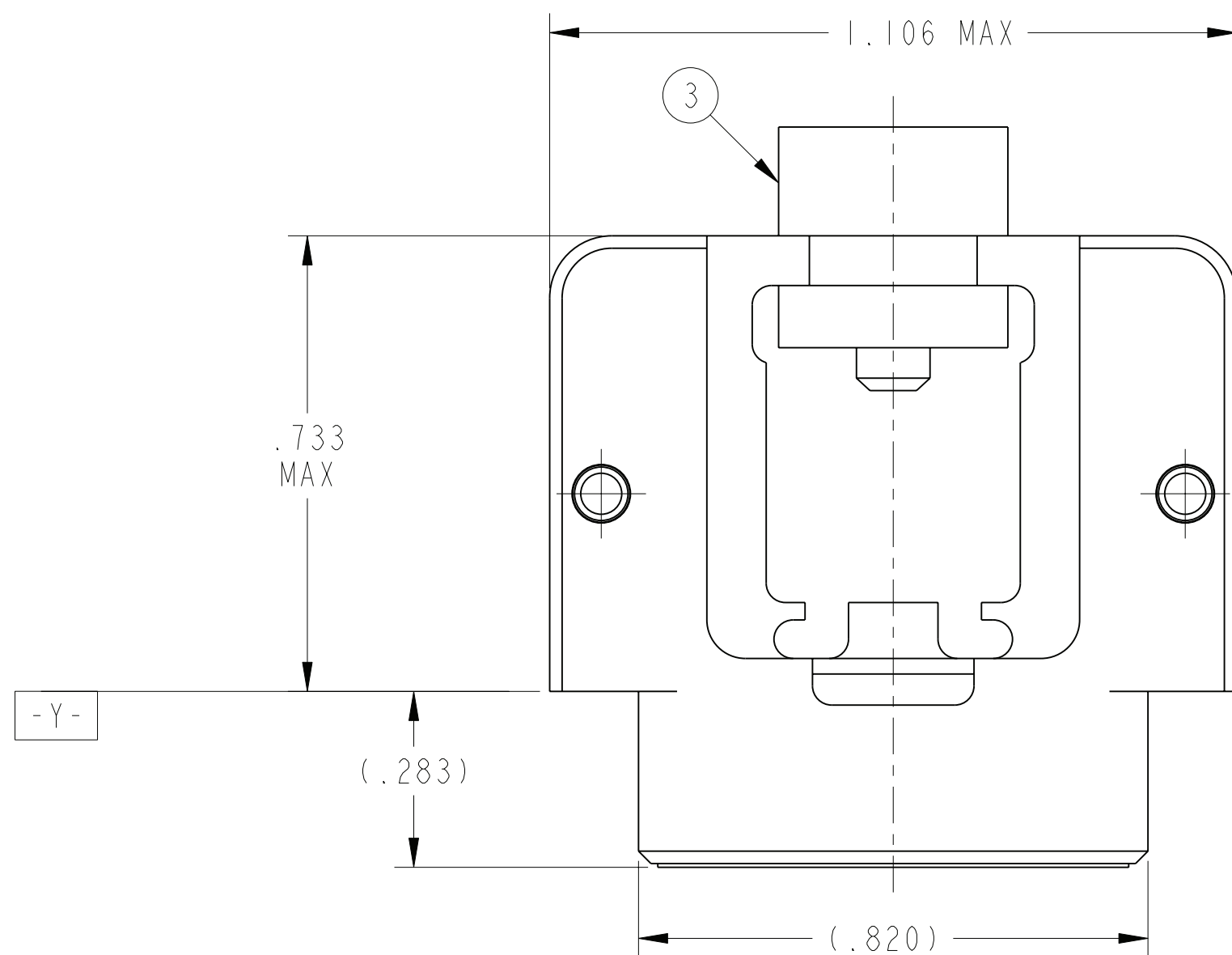
REAR EXPLODED ASSEMBLY VIEW
SCALE 4.000

THE USE OF THIS DOCUMENT IS UNLIMITED. HOWEVER, DOCUMENTS REFERENCED HEREON MAY CONTAIN LIMITED RIGHTS DATA.

SIZE C	CAGE CODE 77820	DOCUMENT NO. 10-504637-008	REV. PA1
SCALE: 3.0	REF.	NA	SHEET 3 OF 3

10-504637-008 DOCUMENT NO. SHEET 3 OF 3 REV. PA1

REV. B		DOCUMENT NO. 10-504637-004	
SHEET 1 OF 4		REV. B	
REVISIONS			
LTR	DESCRIPTION	DATE	
A	PRODUCTION RELEASE	6/13/11	
B	CL(11) SEE CHANGE NOTICE ECN: B2374	1/23/12 RKC	



SECTION A-A

POS	QTY	PART NUMBER	DESCRIPTION	NOTE
4	4	10-504808-007	MT PIN CLAMP ASSEMBLY	
3	2	10-504819-003	STRAIN RELIEF	
2	1	10-504819-007	MT FRONT INSERT ASSEMBLY	
1	1	10-504638-019	MAIN BODY	

APPROVALS		DATE	PARTS LIST			
PREPARED BY	R. CHAPMAN	13-Jan-11	AMPHENOL CORPORATION 40-60 DELAWARE AVENUE SIDNEY, N.Y. 13838			
ENGINEER IN CHARGE	E. HICKEY					
DESIGN MANAGER	E. HICKEY					
DESIGN ACTIVITY GROUP	BLP					
THIRD ANGLE PROJECTION			SIZE	CAGE CODE	DOCUMENT NO.	REV.
			C	77820	10-504637-004	B
			SCALE: 2.0	REF: 10-504637-003	SHEET 1 OF 4	

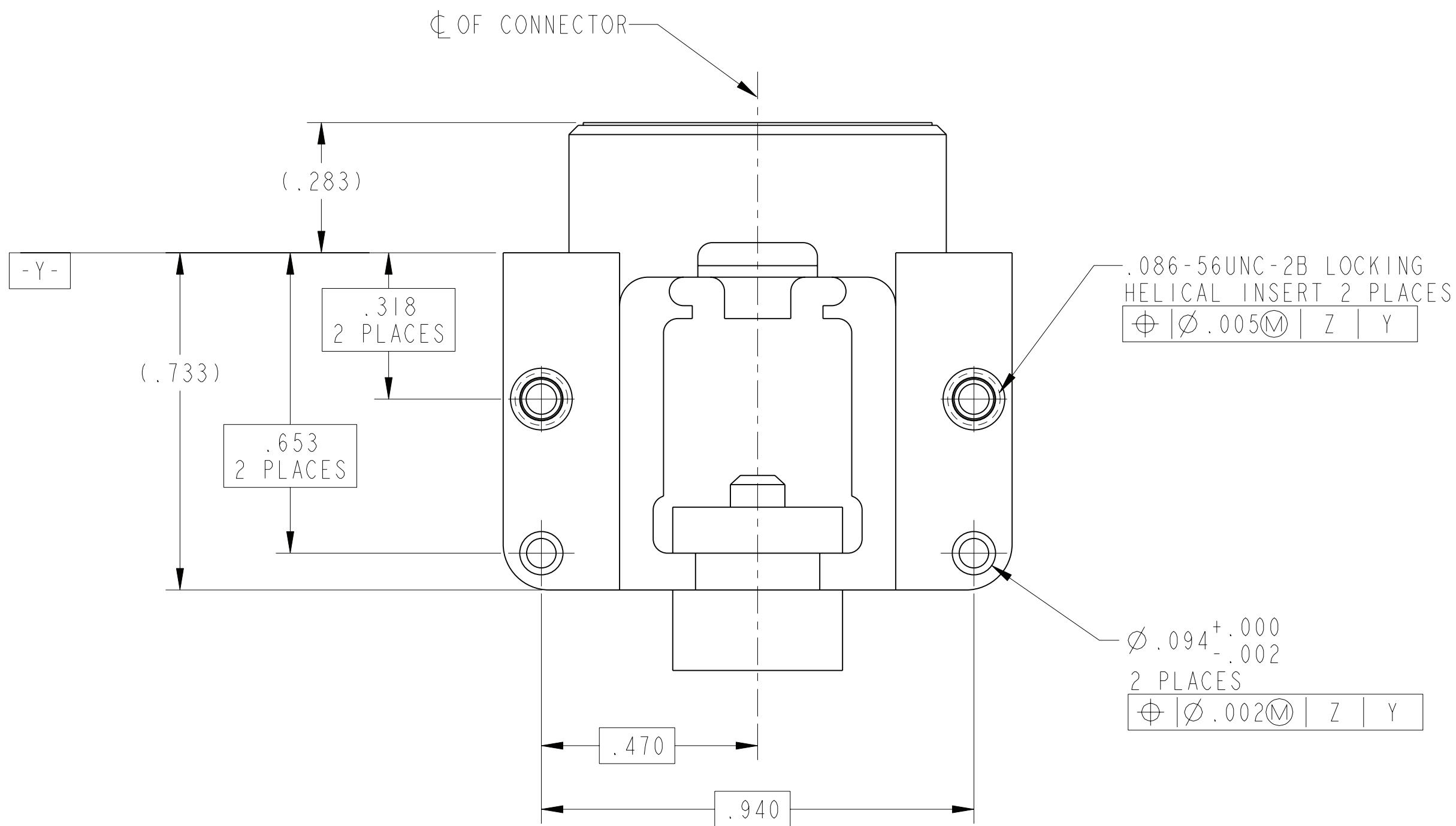
NOTES: SEE SHEET 2
 THE USE OF THIS DOCUMENT IS UNLIMITED. HOWEVER, DOCUMENTS REFERENCED HEREON MAY CONTAIN LIMITED RIGHTS DATA.

PRO/ENGINEER INFORMATION	
N/A	Pro/e Model Used:
N/A	10-504637-004.ASSEM
	Drawing Name:
	10-504637-004

UNLESS OTHERWISE SPECIFIED
 LINEAR DIMENSIONS ARE IN INCHES
 TOLERANCES:
 .XXXX = ±.0005 ANGLES = ±2°
 .XXX = ±.010
 .XX = ±.03
 .X = ±.1
 DIM. & TOL. PER ASME Y14.5M;
 DRM PER MIL-DTL-31000;
 OTHER Amphenol Sds. PER 9-3800
 LEGENDS:
 = FLAG NOTE CALL OUT REFERENCE ONLY

SPECIFICATIONS
MATERIAL SPEC.
NA
PROCESS SPEC.
9-3856-5
9-3895

SCALE 4.000



VIEW AT B

7. MT FERRULE (NOT INCLUDED) CAN NOT BE INSTALLED OR REMOVED UNLESS INSERT IS REMOVED FROM ASSEMBLY FIRST. REMOVE CONNECTOR FROM BOARD TO ACCESS MT FERRULE CLOSET TO BOARD.
6. FRONT INSERT ASSEMBLY, STRAIN RELIEFS AND MT PIN CLAMP ASSEMBLIES ARE SHIPPED UNASSEMBLED.
5. FRONT INSERT (F/N 2) IS REMOVABLE ONCE CONNECTOR IS ATTACHED TO MODULE FOR CLEANING BY UNTHREADING CAPTIVE SCREWS. SCREWS SHOULD BE INSTALLED TO 10-14 IN-OZ.
4. INSERT CAVITIES ARE FOR FIBER OPTIC MT FERRULES PER IEC 1754-5-4. MT FERRULES AND ASSOCIATED RIBBON CABLE ARE NOT PART OF THIS ASSEMBLY. GUIDE PINS FOR MT FERRULES ARE INCLUDED (F/N 4) IN THE ASSEMBLY.
3. FOR CONNECTOR INSTALLATION ILLUSTRATION AND MATED DIMENSIONS SEE SHEET 3.
2. FOR MATING BACKPLANE CONNECTOR ASSEMBLY, SEE DRAWING 10-504639-002.
1. BLACK INK STAMP "AMPHENOL" PART NUMBER AND DATE CODE ON INDICATED SURFACE PER 9-3856-5. DATE CODE PER 9-3895. CHARACTERS TO BE .062±.020 HIGH. ADDITIONAL INFORMATION MAY BE REQUESTED BY PURCHASE ORDER. STAMPING CAN BE ON BOTH SIDES OF PART.

THE USE OF THIS DOCUMENT IS UNLIMITED.
 HOWEVER, DOCUMENTS REFERENCED HEREON
 MAY CONTAIN LIMITED RIGHTS DATA.

SIZE C	CAGE CODE 77820	DOCUMENT NO. 10-504637-004	REV. B
SCALE: 2.0	REF. 10-504637-003	SHEET 2 OF 4	

10-504637-004

SHEET 2 OF 4

B

C

B

A

D

C

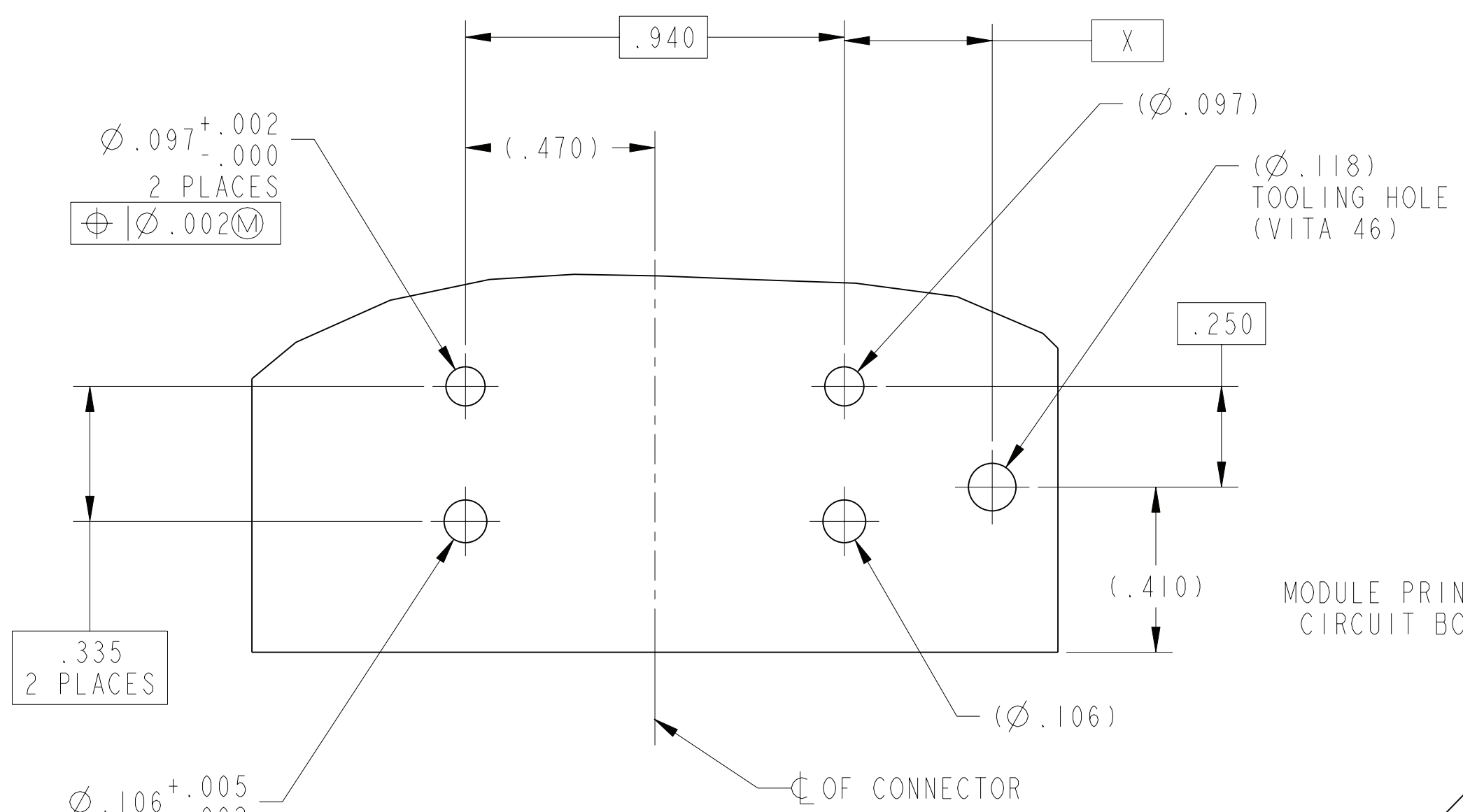
B

SHEET 2 OF 4

10-504637-004

A

10-504637-004
 SHEET 3 OF 4
 REV. B
 C
 B
 A
 FORMAT: C-U-L-E, Rev. B

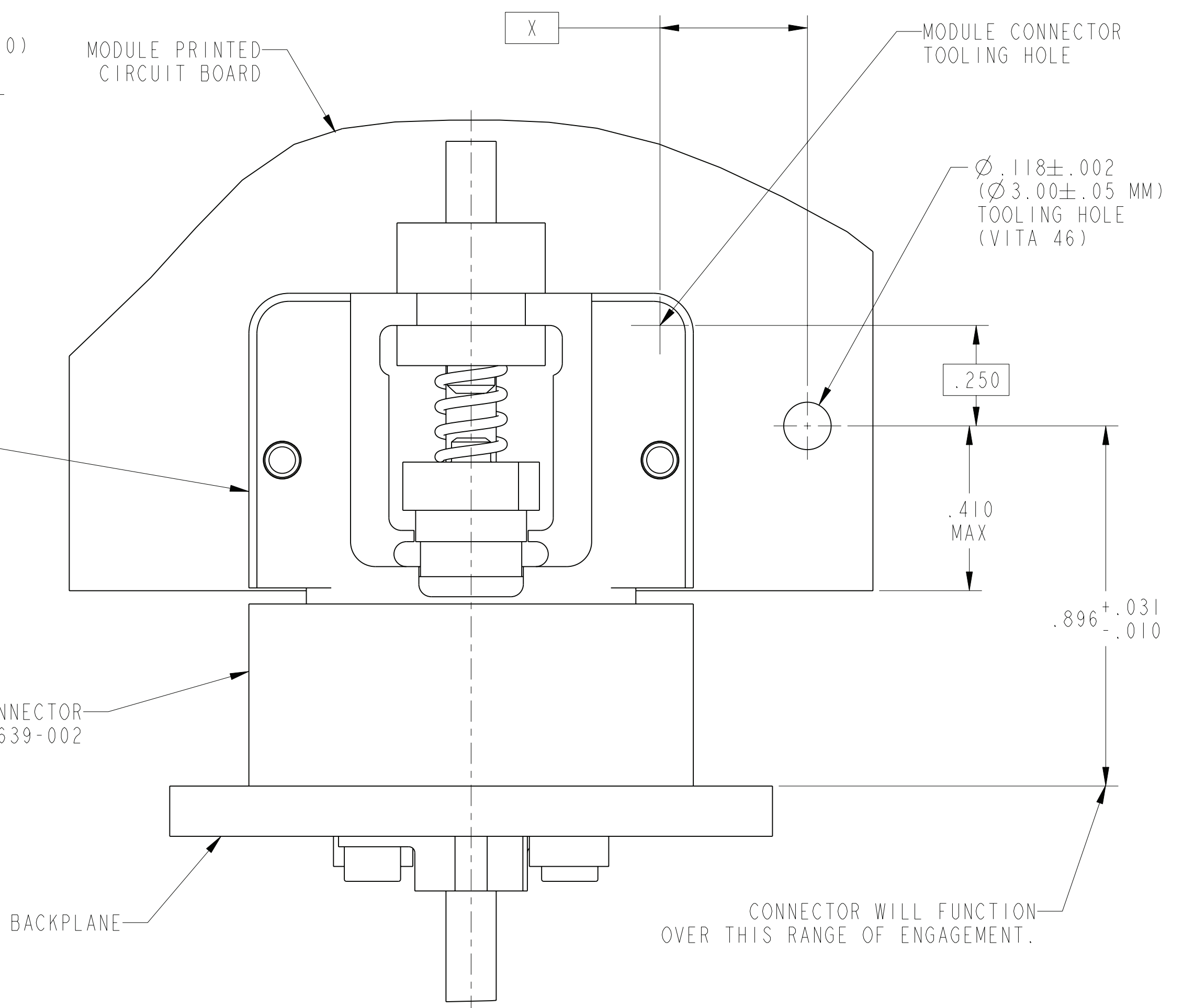


**SUGGESTED MODULE PCB
 INTERFACE DIMENSIONS**
 SCALE 3.000

CONNECTOR LOCATION ON MODULE PCB

POSITION	DIM "X" MM (INCH)
P2	53.73 (2.1154)
P3	96.55 (3.8012)
P4	125.35 (4.9350)
P5	154.15 (6.0689)
P6	182.95 (7.2028)

POSITIONS PER VITA 46



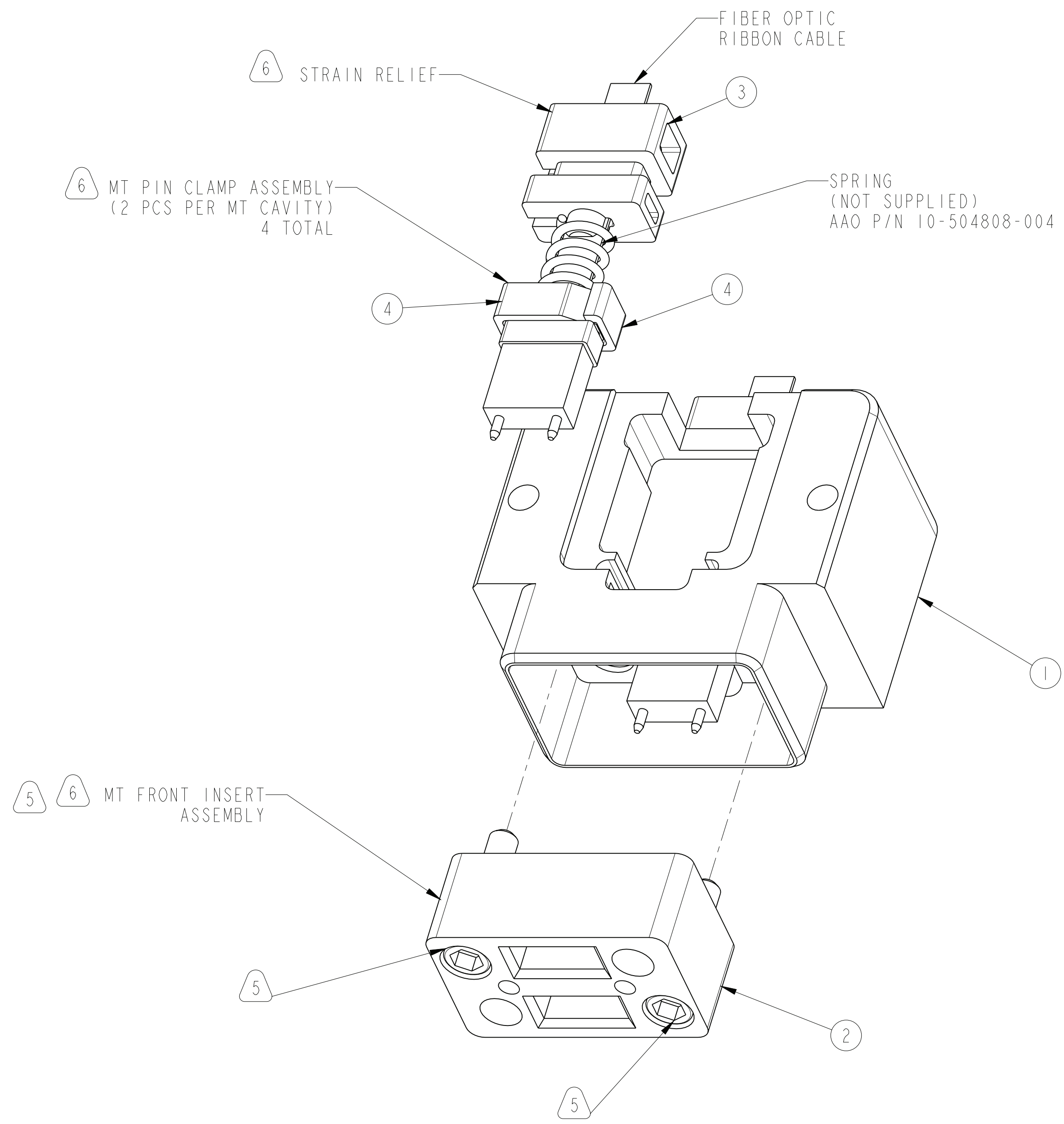
**CONNECTOR INSTALLATION ILLUSTRATION
 AND MATED DIMENSIONS**
 SCALE 4.000

CONNECTOR WILL FUNCTION OVER THIS RANGE OF ENGAGEMENT.

THE USE OF THIS DOCUMENT IS UNLIMITED. HOWEVER, DOCUMENTS REFERENCED HEREON MAY CONTAIN LIMITED RIGHTS DATA.

SIZE C	CAGE CODE 77820	DOCUMENT NO. 10-504637-004	REV. B
SCALE: 2.0	REF. 10-504637-003	SHEET 3 OF 4	

10-504637-004
SHEET 4 OF 4
REV. B



**EXPLODED VIEW OF
MT ASSEMBLY**

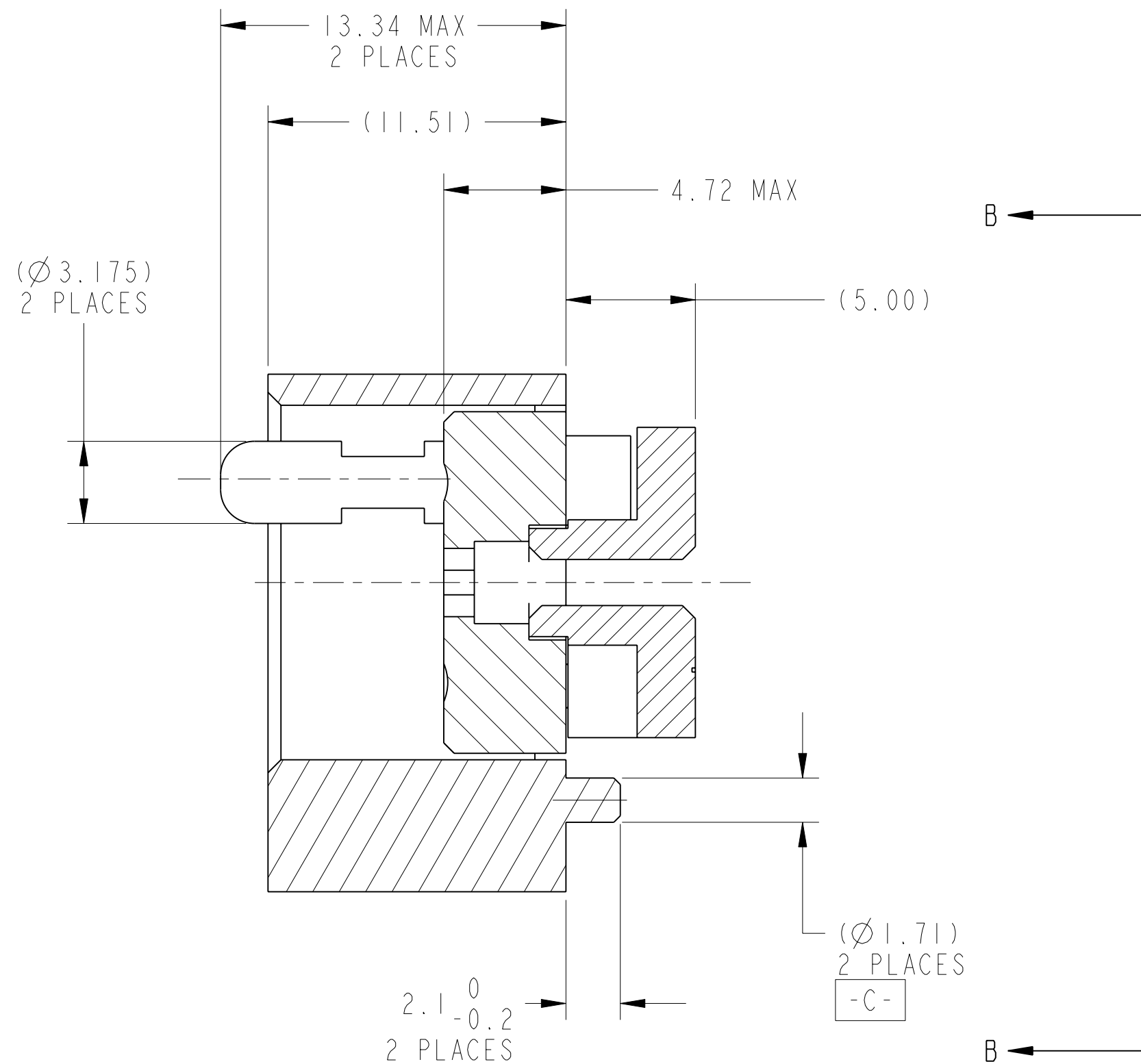
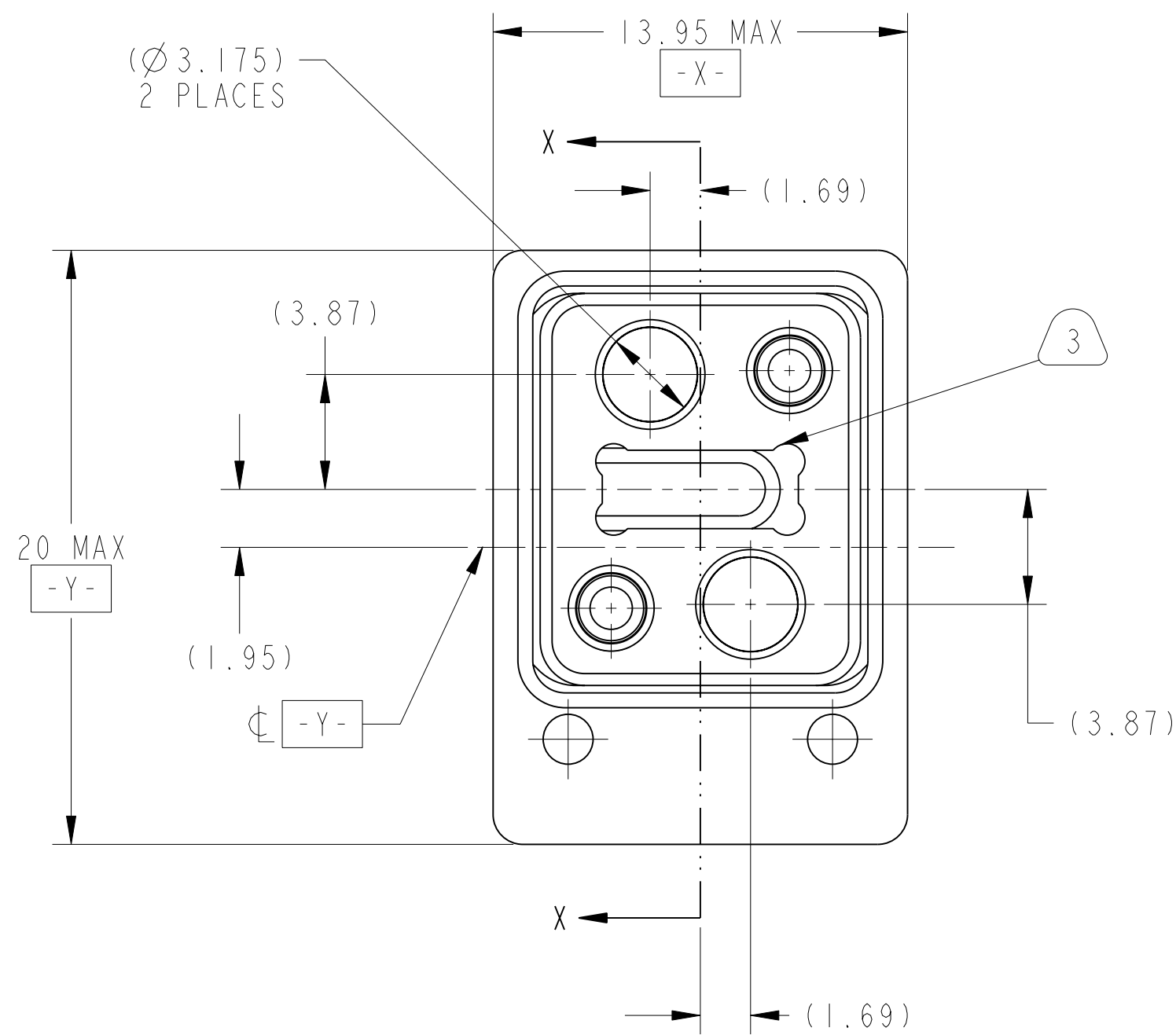
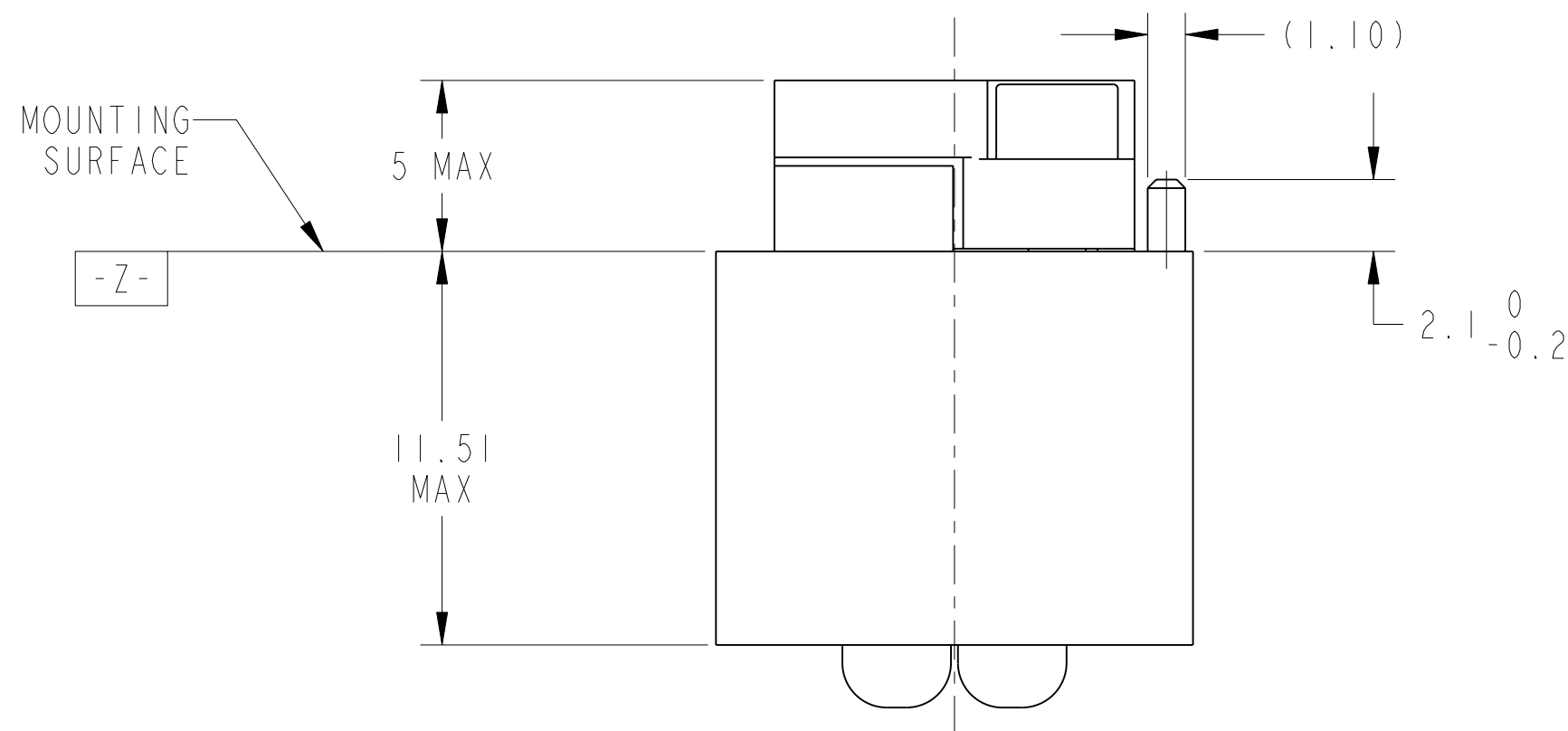
SCALE 4.000

THE USE OF THIS DOCUMENT IS UNLIMITED.
HOWEVER, DOCUMENTS REFERENCED HEREON
MAY CONTAIN LIMITED RIGHTS DATA.

SIZE C	CAGE CODE 77820	DOCUMENT NO. 10-504637-004	REV. B
SCALE: 2.0	REF. 10-504637-003	SHEET 4 OF 4	

10-504637-004
SHEET 4 OF 4
REV. B

REV. PA1	SHEET 1 OF 3	DOCUMENT NO. 10-504639-006
REVISIONS		
LTR	DESCRIPTION	DATE
PA1	INITIAL RELEASE	10/19/15



SECTION X-X

SEE SHEET 2

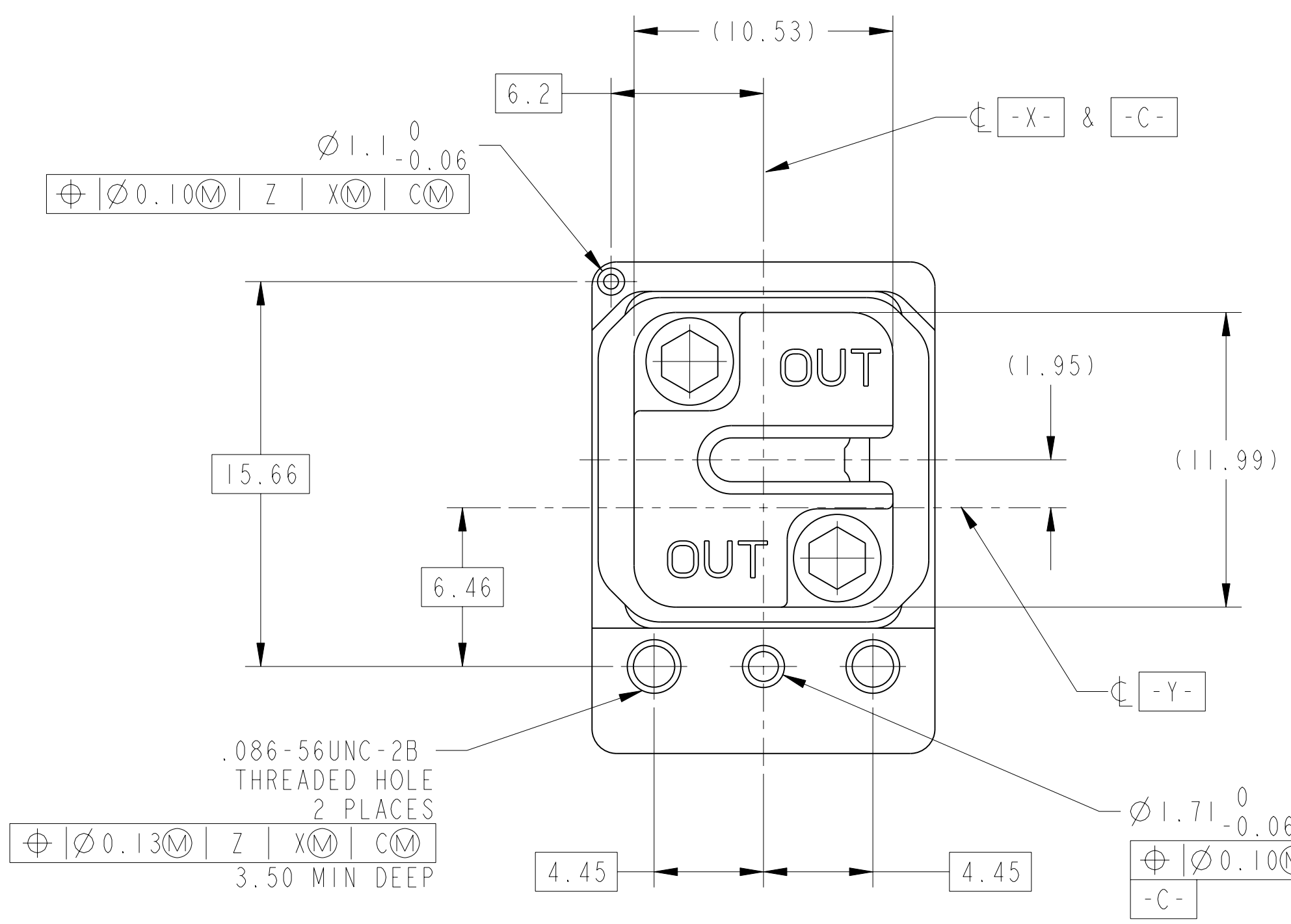
NOTES:

THE USE OF THIS DOCUMENT IS UNLIMITED. HOWEVER, DOCUMENTS REFERENCED HEREON MAY CONTAIN LIMITED RIGHTS DATA.

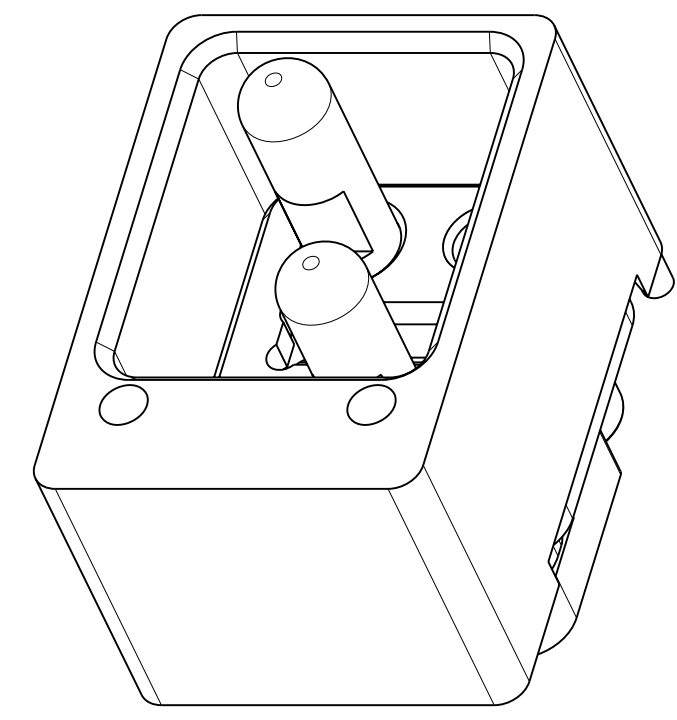
SCALE 5.000

N/A	PRO/ENGINEER INFORMATION
N/A	Pro/e Model Used: 10-504639-006.DWG.ASSEM
NEXT ASSEMBLY	Drawing Name: 10-504639-006

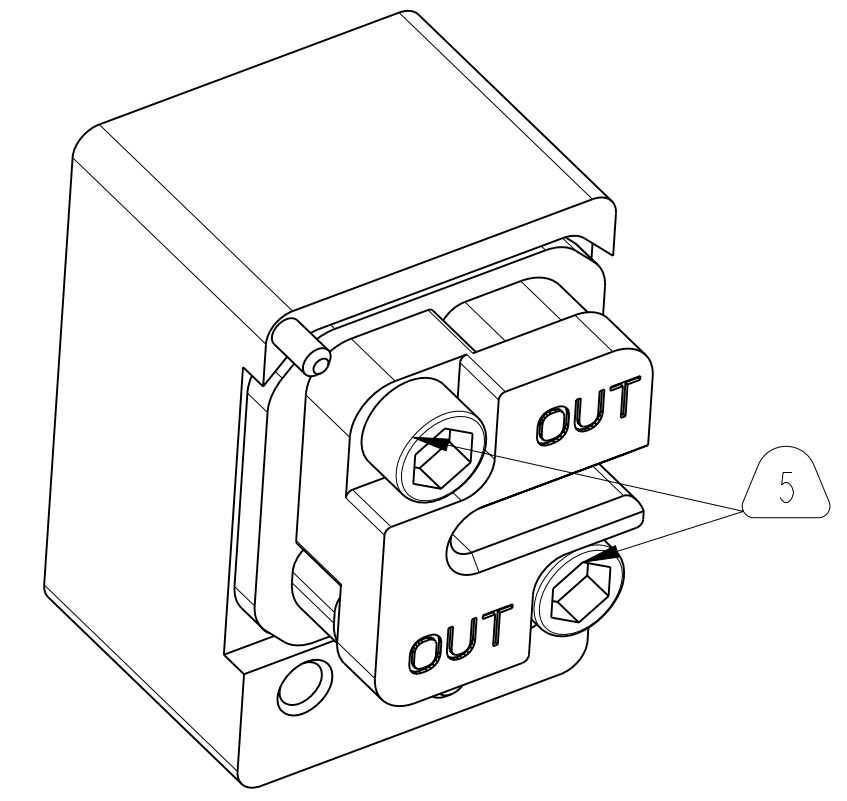
UNLESS OTHERWISE SPECIFIED		SPECIFICATIONS		POS	QTY	PART NUMBER	DESCRIPTION	NOTE								
LINEAR DIMENSIONS ARE IN INCHES TOLERANCES: .XXXX = ±.0005 ANGLES= ±2° .XXX = ±.010 .XX = ±.03 .X = ±.1		MATERIAL SPEC. NA		APPROVALS		DATE	AMPHENOL CORPORATION <small>40-60 DELAWARE AVENUE SIDNEY, N.Y. 13838</small> CONNECTOR, FIBER OPTIC, BACKPLANE, 1 MT (VITA 66.4)	U								
DIM. & TOL. PER ASME Y14.5M; DRM PER MIL-DTL-31000; OTHER Amphenol Sids. PER 9-3800		PROCESS SPEC. 9-3895 9-3856-5		PREPARED BY R. CHAPMAN	19-0c1-15	<table border="1"> <tr> <th>SIZE</th> <th>CAGE CODE</th> <th>DOCUMENT NO.</th> <th>REV.</th> </tr> <tr> <td>C</td> <td>77820</td> <td>10-504639-006</td> <td>PA1</td> </tr> </table>			SIZE	CAGE CODE	DOCUMENT NO.	REV.	C	77820	10-504639-006	PA1
SIZE	CAGE CODE	DOCUMENT NO.	REV.													
C	77820	10-504639-006	PA1													
LEGENDS: = FLAG NOTE CALL OUT REFERENCE ONLY		THIRD ANGLE PROJECTION		DESIGN MANAGER R. SELFRIDGE	BLP											
				DESIGN ACTIVITY GROUP		SCALE: 3.0 REF: NA SHEET 1 OF 3										



VIEW AT B



SCALE 4.000



SCALE 4.000

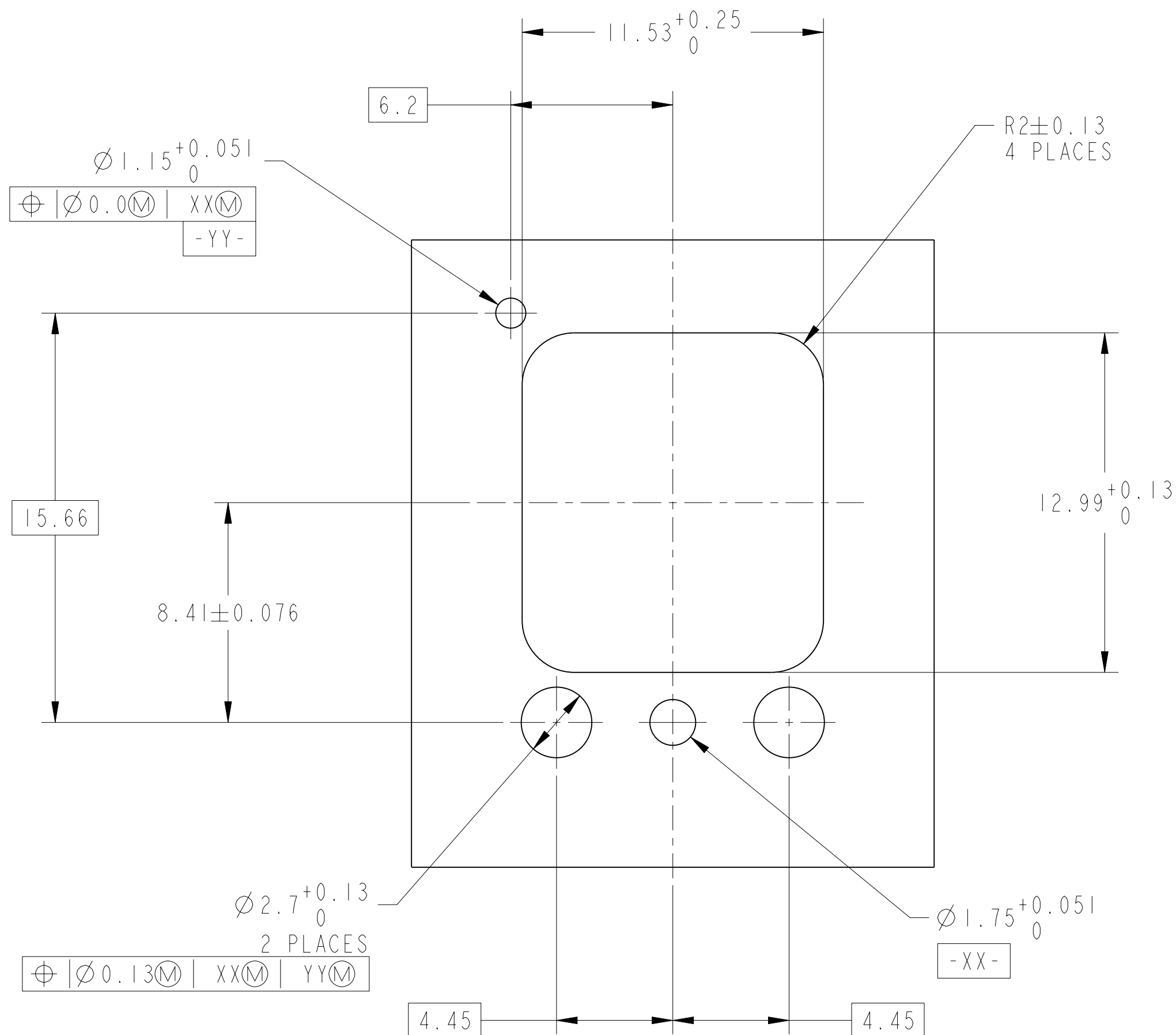
7. FOR CONNECTOR INSTALLATION ILLUSTRATION SEE SHEET 3.
6. FOR MATING MODULE CONNECTOR ASSEMBLY, SEE DRAWING 10-504637-008.
5. TIGHTEN CAPTIVE SCREWS TO 10-14 IN-OZ AFTER INSTALLING MT FERRULE (NOT INCLUDED).
4. FIBER OPTIC INSERT IS DESIGNED FOR MT TYPE FERRULES TERMINATED TO NON-STRENGTH MEMBERED RIBBON CABLE.
3. INDICATED CAVITY WILL ACCOMODATE A STANDARD 12 CHANNEL MT FERRULE PER IEC 1754-5-4.
2. BLACK INK STAMP "AMPHENOL" PART NUMBER AND DATE CODE ON INDICATED SURFACE PER 9-3856-5. DATE CODE PER 9-3895. CHARACTERS TO BE $.062 \pm .020$ HIGH. ADDITIONAL INFORMATION MAY BE REQUESTED BY PURCHASE ORDER.
1. PARTS ARE SHIPPED UNASSEMBLED.

THE USE OF THIS DOCUMENT IS UNLIMITED. HOWEVER, DOCUMENTS REFERENCED HEREON MAY CONTAIN LIMITED RIGHTS DATA.

MATERIALS AND FINISHES

COMPONENT	MATERIAL/ FINISH
BACKPLANE SHELL	BODY - MATERIAL - ALUM. ALLOY PER AMS 4150 FINISH - CHROMATE TREATMENT PER MIL-C-5541, CL 3 HELICAL INSERTS - STAINLESS STEEL 304 SERIES PASSIVATED
INSERT ASSEMBLY	FRONT INSERT/RETAINER - MATERIAL - ALUM ALLOY PER AMS 4150 FINISH - CHROMATE TREATMENT PER MIL-C-5541, CL3 SCREW - STAINLESS STEEL 300 SERIES, PASSIVATED HELICAL INSERTS - STAINLESS STEEL 304 SERIES, PASSIVATED GUIDE PIN - STAINLESS STEEL PER AMS 5640. PASSIVATED

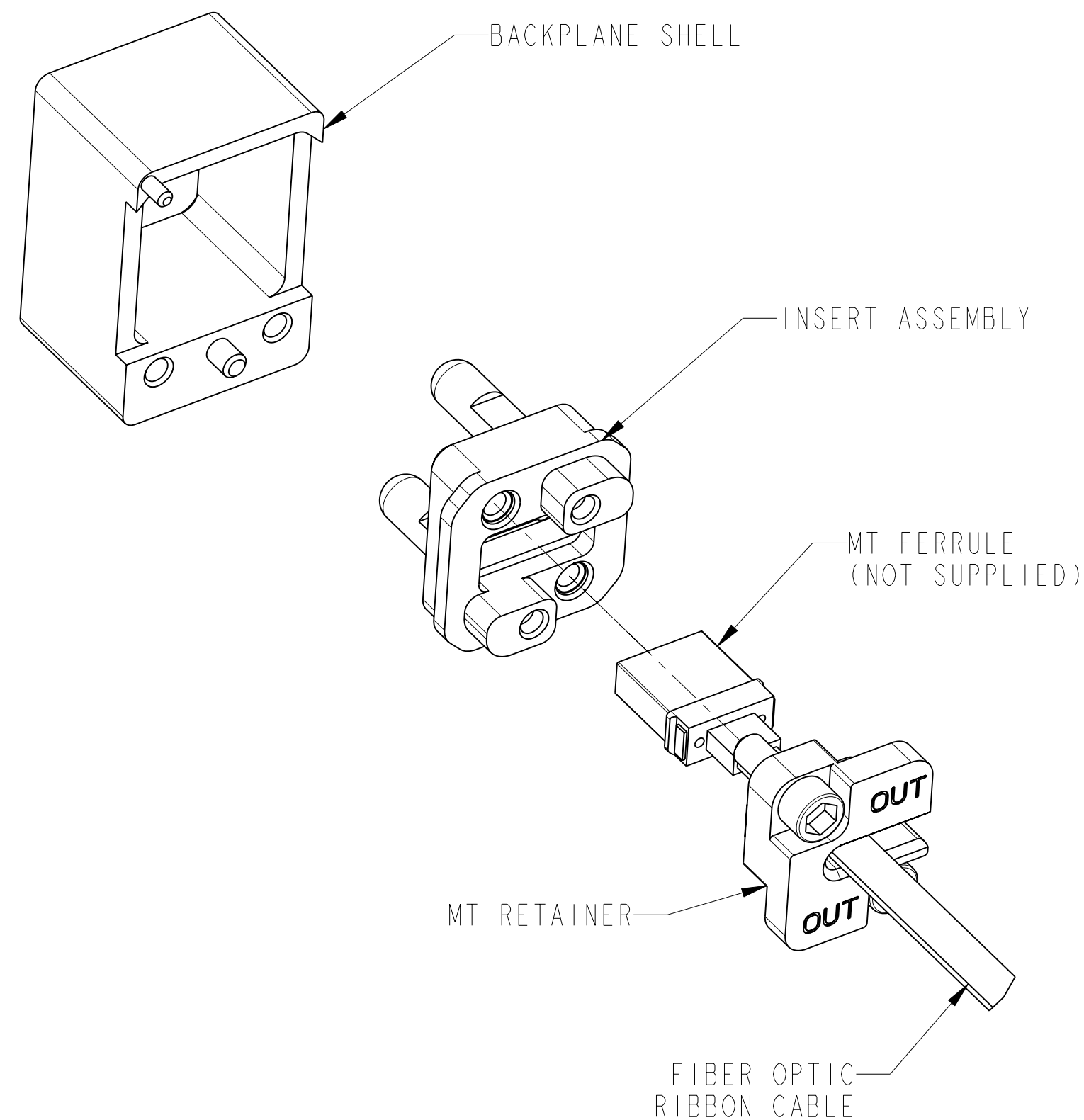
SIZE C	CAGE CODE 77820	DOCUMENT NO. 10-504639-006	REV. PA1
SCALE: 3.0	REF: NA	SHEET 2 OF 3	



SUGGESTED BACKPLANE BOARD CUTOUTS

(CONNECTOR SIDE SHOWN)

SCALE 6.000



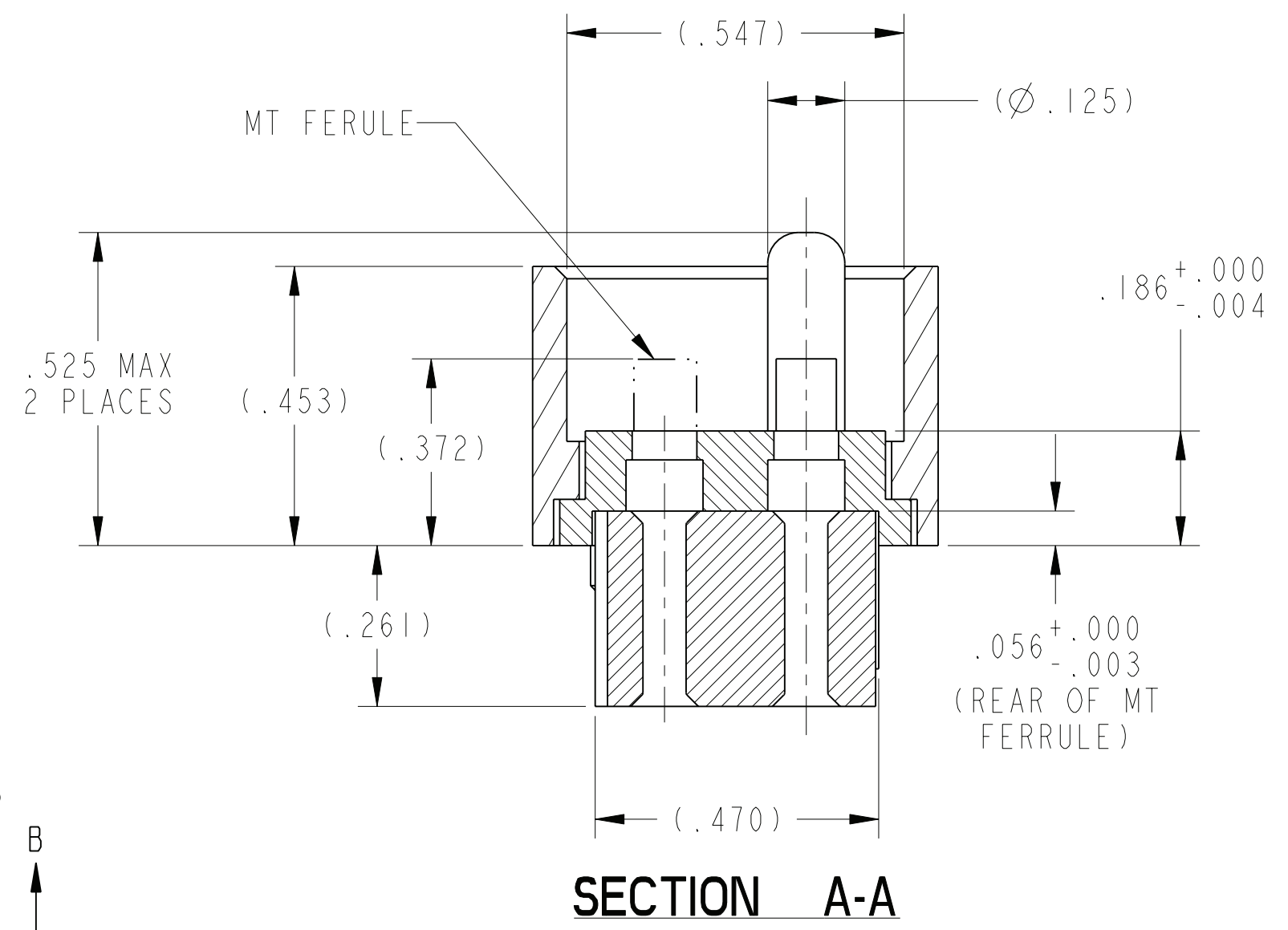
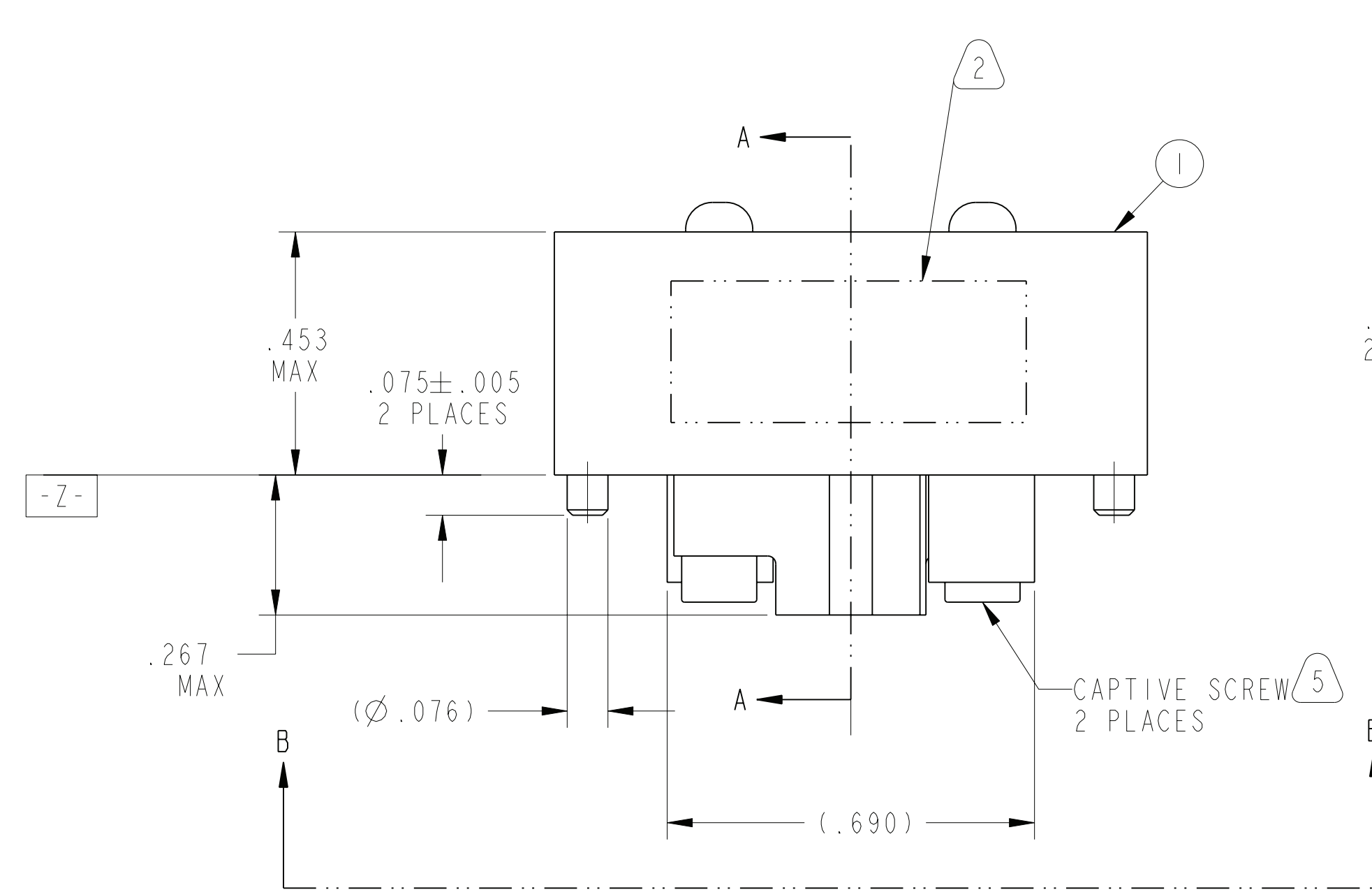
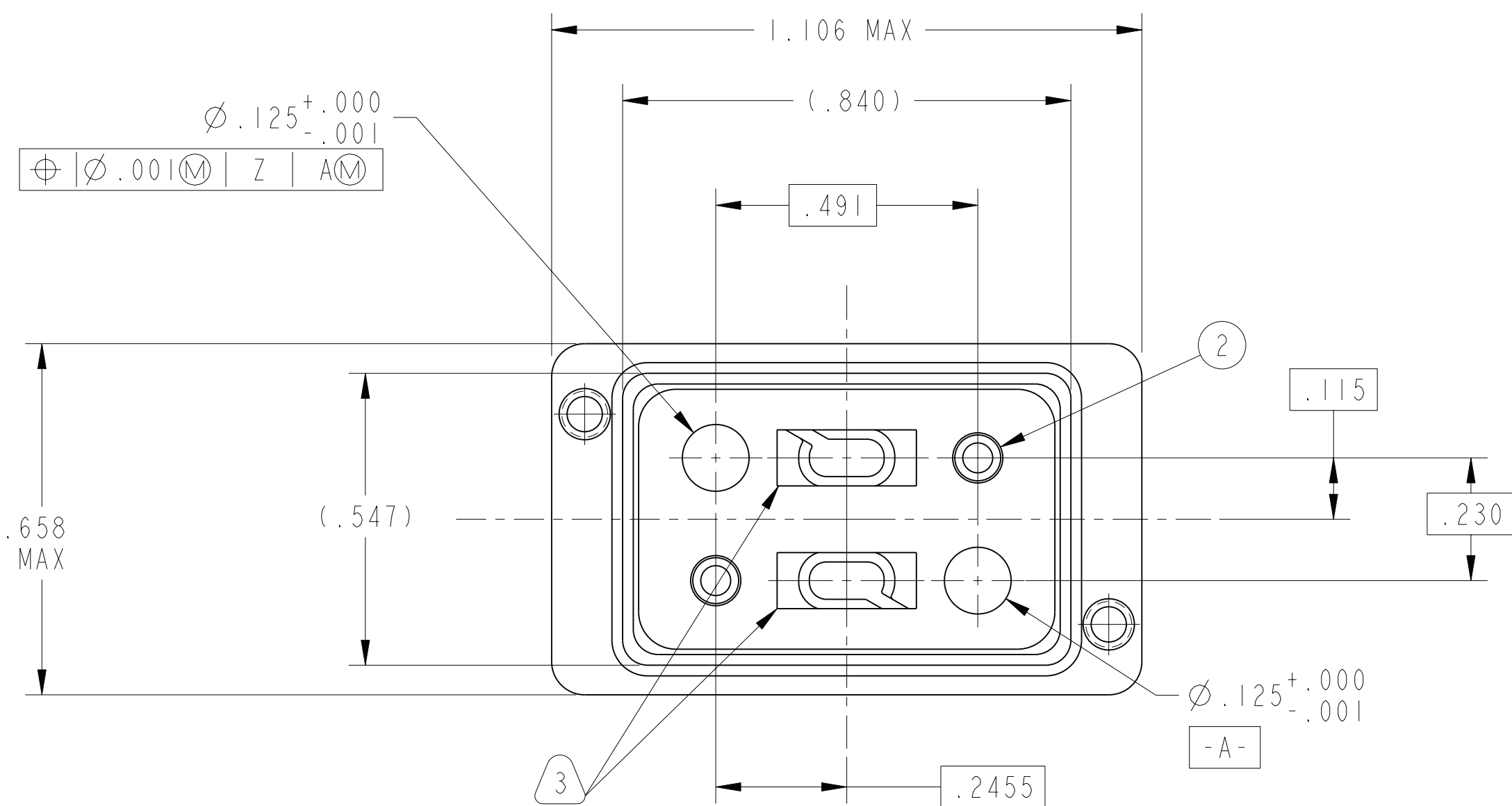
REAR EXPLODED ASSEMBLY VIEW

SCALE 3.000

THE USE OF THIS DOCUMENT IS UNLIMITED. HOWEVER, DOCUMENTS REFERENCED HEREON MAY CONTAIN LIMITED RIGHTS DATA.

SIZE	CAGE CODE	DOCUMENT NO.	REV.
C	77820	10-504639-006	PA1
SCALE: 3.0	REF:	NA	SHEET 3 OF 3

REV. B	SHEET 1 OF 3	DOCUMENT NO. 10-504639-002
REVISIONS		
LTR	DESCRIPTION	DATE
A	PRODUCTION RELEASE	5/10/11
B	CL(11) SEE CHANGE NOTICE ECN: B2377	1/13/12 RKC



SECTION A-A

NOTES: SEE SHEET 2
 THE USE OF THIS DOCUMENT IS UNLIMITED. HOWEVER, DOCUMENTS REFERENCED HEREON MAY CONTAIN LIMITED RIGHTS DATA.

SCALE 4.000

UNLESS OTHERWISE SPECIFIED
 LINEAR DIMENSIONS ARE IN INCHES
 TOLERANCES:
 .XXXX = ±.0005 ANGLES = ±2°
 .XXX = ±.010
 .XX = ±.03
 .X = ±.1
 DIM. & TOL. PER ASME Y14.5M;
 DRM PER MIL-DTL-31000;
 OTHER Amphenol Sds. PER 9-3800
 LEGENDS:
 = FLAG NOTE CALL OUT REFERENCE ONLY

SPECIFICATIONS	
MATERIAL SPEC.	NA
PROCESS SPEC.	9-3856-5 9-3895

POS	QTY	PART NUMBER	DESCRIPTION	NOTE
2	1	10-504826-008	INSERT ASSEMBLY, FIBER OPTIC	
1	1	10-504640-002	SHELL, BACKPLANE	

APPROVALS		DATE
PREPARED BY	R. CHAPMAN	
ENGINEER IN CHARGE	E. HICKEY	11-May-09
DESIGN MANAGER	E. HICKEY	
DESIGN ACTIVITY GROUP	LRM	
THIRD ANGLE PROJECTION		

PARTS LIST			
AMPHENOL CORPORATION 40-60 DELAWARE AVENUE SIDNEY, N.Y. 13838			
CONNECTOR, FIBER OPTIC, BACKPLANE, 2 MT			
SIZE	CAGE CODE	DOCUMENT NO.	REV.
C	77820	10-504639-002	B
SCALE: 3.0 REF: 10-504639-001		SHEET 1 OF 3	

N/A	PRO/ENGINEER INFORMATION
N/A	Pro/e Model Used: 10-504639-002.ASSEM
NEXT ASSEMBLY	Drawing Name: 10-504639-002

DOCUMENT NO. 10-504639-002
 SHEET 1 OF 3
 REV. B
 C
 B
 A

10-504639-002

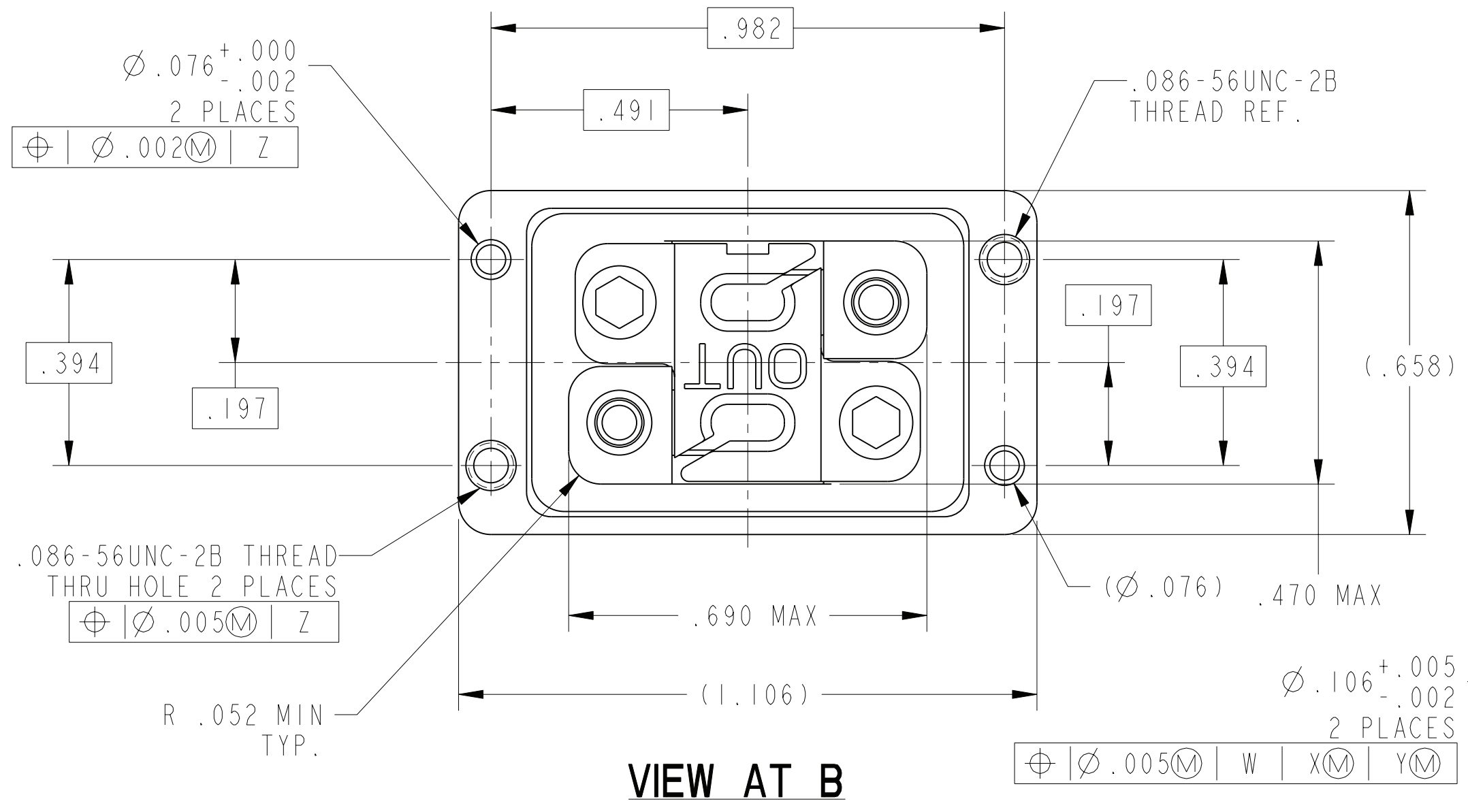
SHEET 2 OF 3

REV. B

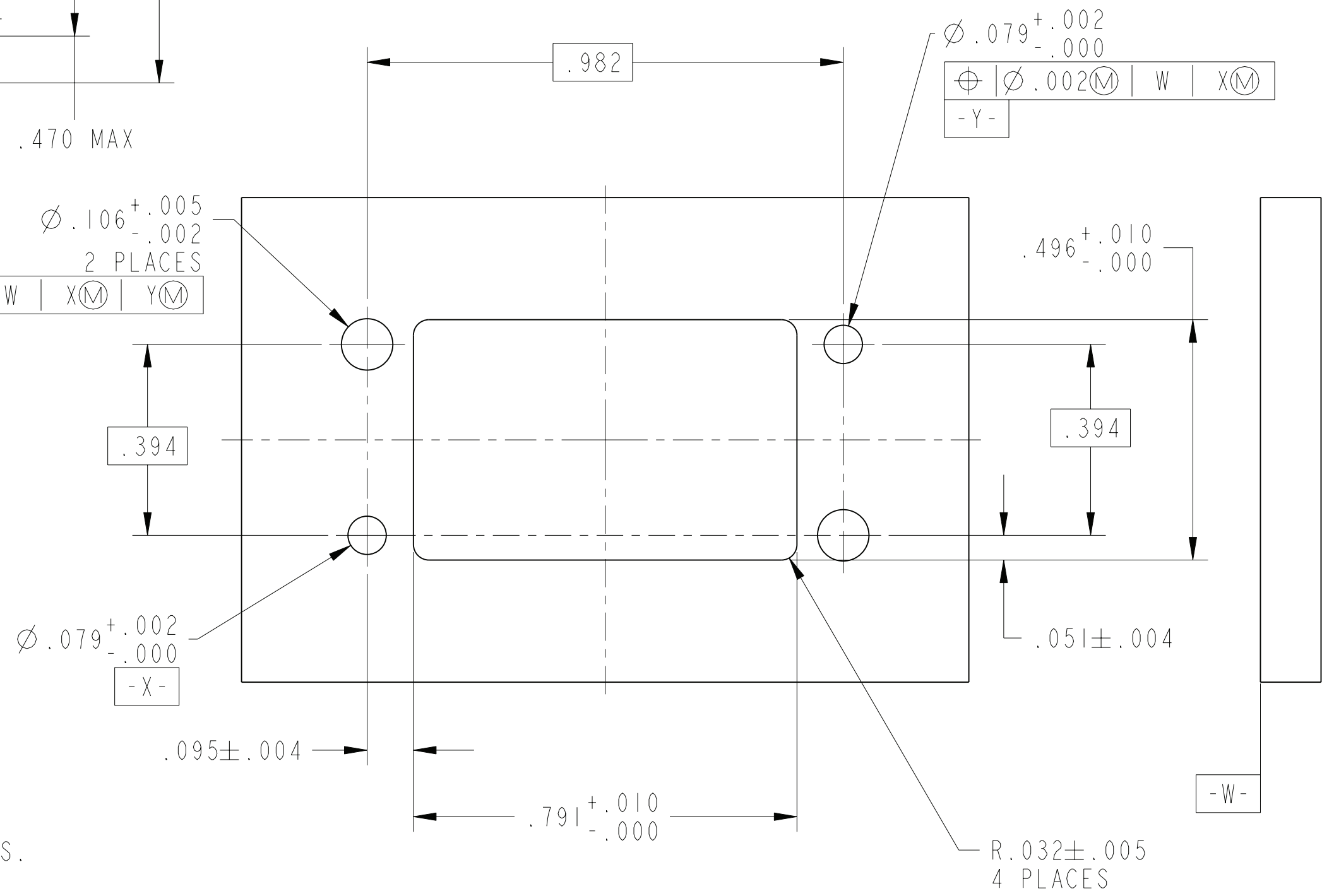
C

B

A



VIEW AT B



SUGGESTED BACKPLANE BOARD CUTOUTS

(CONNECTOR SIDE SHOWN)

SCALE 4.000

7. FOR CONNECTOR INSTALLATION ILLUSTRATION AND MATED DIMENSIONS SEE SHEET 3.
6. FOR MATING MODULE CONNECTOR ASSEMBLY, SEE DRAWING 10-504637-004 AND OTHERS.
5. TIGHTEN CAPTIVE SCREWS TO 10-14 IN-OZ AFTER INSTALLING MT FERRULE (NOT INCLUDED).
4. FIBER OPTIC INSERT IS DESIGNED FOR MT TYPE FERRULES TERMINATED TO NON-STRENGTH MEMBERED RIBBON CABLE.
3. INDICATED CAVITIES WILL ACCOMODATE A STANDARD 12 CHANNEL MT FERRULE PER IEC 1754-5-4.
2. BLACK INK STAMP "AMPHENOL" PART NUMBER AND DATE CODE ON INDICATED SURFACE PER 9-3856-5. DATE CODE PER 9-3895. CHARACTERS TO BE $.062 \pm .020$ HIGH. ADDITIONAL INFORMATION MAY BE REQUESTED BY PURCHASE ORDER.
1. PARTS ARE SHIPPED UNASSEMBLED.

THE USE OF THIS DOCUMENT IS UNLIMITED. HOWEVER, DOCUMENTS REFERENCED HEREON MAY CONTAIN LIMITED RIGHTS DATA.

SIZE C	CAGE CODE 77820	DOCUMENT NO. 10-504639-002	REV. B
SCALE: 3.0	REF. 10-504639-001	SHEET 2 OF 3	

SHEET 2 OF 3

10-504639-002

A

D

C

REV. B

CONNECTOR LOCATION ON MODULE PCB

POSITION	DIM "X" MM (INCH)
P2	53.73 (2.1154)
P3	96.55 (3.8012)
P4	125.35 (4.9350)
P5	154.15 (6.0689)
P6	182.95 (7.2028)

DOCUMENT NO. 10-504639-002

SHEET 3 OF 3

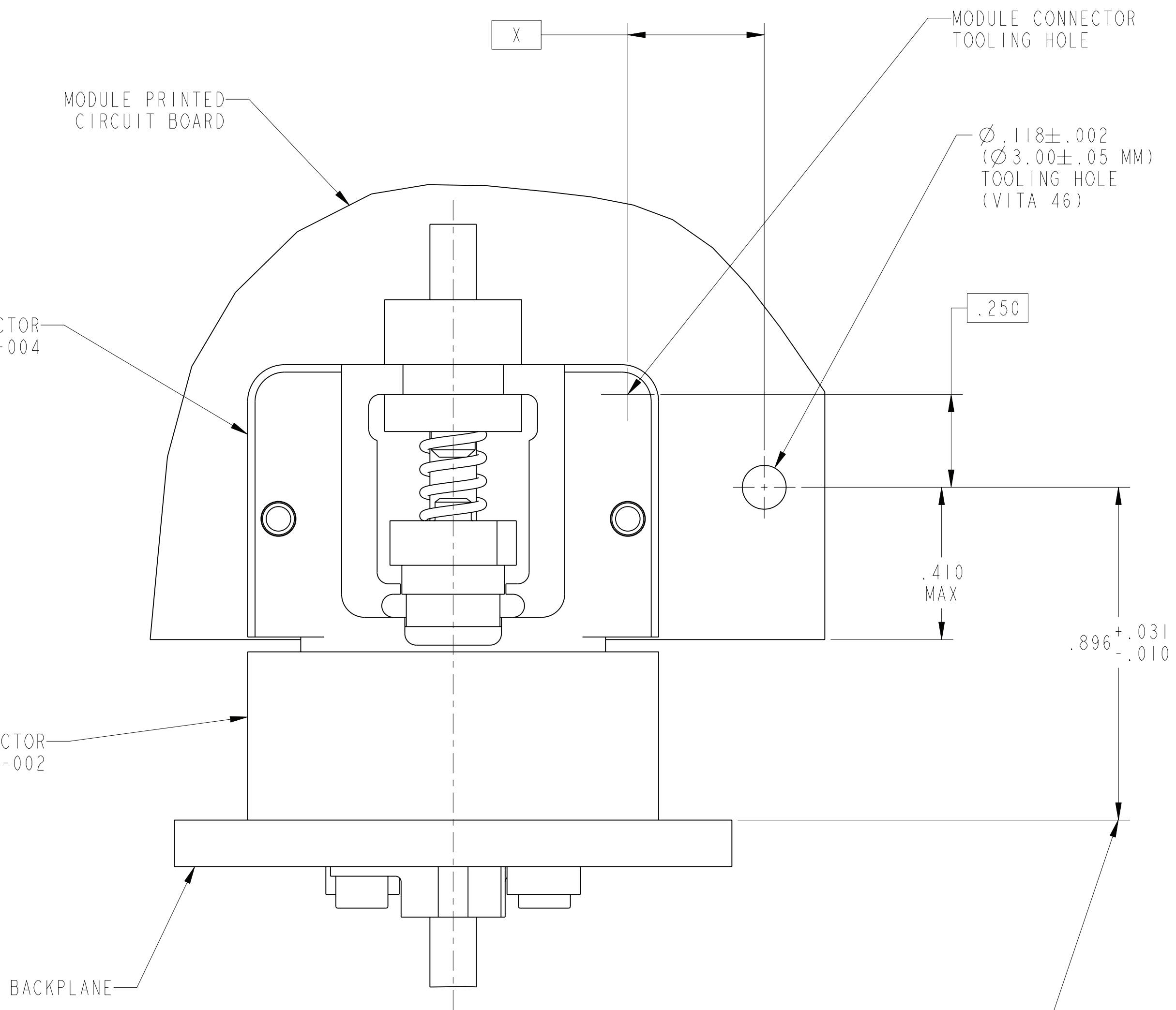
REV. B

C

B

A

THE USE OF THIS DOCUMENT IS UNLIMITED. HOWEVER, DOCUMENTS REFERENCED HEREON MAY CONTAIN LIMITED RIGHTS DATA.



CONNECTOR INSTALLATION ILLUSTRATION AND MATED DIMENSIONS

SCALE 4.000

SIZE C	CAGE CODE 77820	DOCUMENT NO. 10-504639-002	REV. B
SCALE: 3.0	REF. 10-504639-001	SHEET 3 OF 3	

REV. B SHEET 3 OF 3

DOCUMENT NO. 10-504639-002

A

D