

D38999 SERIES III - STYLE PCB CONNECTORS

FOR PRINTED CIRCUIT BOARD APPLICATIONS

PDS - 273-4

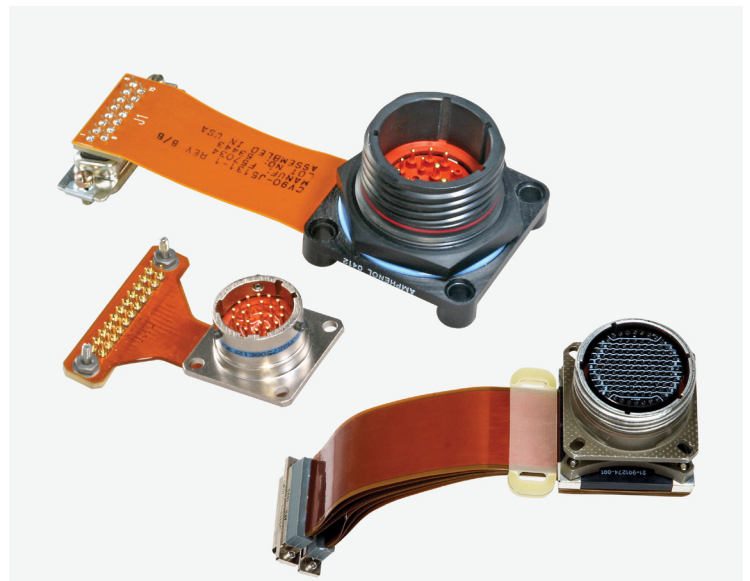


38999 SERIES III CONNECTORS ARE IDEAL FOR PRINTED CIRCUIT BOARD APPLICATIONS, EITHER WITH RIGID ATTACHMENT OR WITH FLEX PRINT ASSEMBLY ATTACHMENT

Amphenol provides circular connectors with PC Tail contacts. This product data sheet features the 38999 Series III connectors which are ideal for printed circuit board applications, either with rigid attachment or with flex print assembly attachment. For information on other Amphenol circular connectors with PC Tail contacts, consult Amphenol Aerospace.

FEATURES & BENEFITS:

- Connectors meet all applicable requirements of MIL-DTL-38999
- Contacts meet all applicable requirements of AS39029
- All contacts come pre-assembled into the connectors
- Double Flange and Standoff styles available to improve grounding and avoid stress on contacts
- Optional alignment disks make assembly easy
- Available with clinch nuts installed
- Contact pre-tinning options available; see Amphenol Aerospace for details.



HOW TO ORDER

PART NUMBER KEY

| 1. Type | 2. Shell Style | 3. Service Class | 4. Shell Size & Insert Arrangement | 5. Contact Type | 6. Alternate Position | 7. PCB Length if required |
|---------|----------------|------------------|------------------------------------|-----------------|-----------------------|---------------------------|
| TVP | 00 | DZ | 11-35 | P | | P25 |

1. Connector Type

| | |
|--------------|--|
| TV | Tri-Start, 175°C |
| TVS | Tri-Start, 200°C |
| TVP | Tri-Start, Panel Mounted, 175°C |
| TVPS | Tri-Start, Panel Mounted, 200°C |
| PTV | Potted Version, Tri-Start, 175°C |
| PTVS | Potted Version, Tri-Start, 200°C |
| CTV | Composite, Tri-Start, 175°C |
| CTVS | Composite, Tri-Start, 200°C |
| CTVP | Composite, Tri-Start, Panel Mount, 175°C |
| CTVPS | Composite, Tri-Start, Panel Mount, 200°C |

2. Shell Style

| | |
|-----------|--|
| 02 | Box Mount Receptacle |
| 12 | Box Mount Receptacle Clinch Nuts- Not available in Composite |
| 00 | Wall Mount Receptacle |
| 10 | Wall Mount Receptacle Clinch Nuts- Not available in Composite |
| 40 | Wall Mount Receptacle Double Flange |
| 07 | Jam Nut Receptacle |
| 47 | Jam Nut Receptacle Double Flange |
| 97 | Reduced Flange Jam Nut |
| 98 | Reduced Flange Jam Nut with Standoffs |
| 48 | Reduced Flange Jam Nut with Double Flange |

3. Service Class, Aluminum 175°C

| | | |
|-----------|---|--|
| DT | Durmalon: plated alternative to cadmium, corrosion resistant, 500 hrs. extended salt spray, -50dB@10GHz | |
| DZ | Black Zinc-Nickel: alternative to cadmium, 500 hrs. salt spray, conductive, -50dB@10GHz | |
| RW | Olive Drab Cadmium: 500 hrs. salt spray, -65dB@10GHz | |
| DW | Corrosion Resistant Olive Drab Cadmium: 1,000 hrs. extended salt spray | |

3. Service Class, Aluminum 200°C

| | | |
|-----------|--|--|
| RF | Electroless Nickel: 48 hrs. salt spray, -65dB@10GHz | |
| RB | Marine Bronze: 500 hrs. salt spray, -65dB@10GHz | |
| DS | AP-93™ Plating Tri-Nickel Alloy: 1,000 hrs. salt spray, intermateable with cadmium | |
| DB | Black Electroless Nickel: 100 hrs. salt spray | |

3. Service Class, Composite 175°C

| | | |
|-----------|--|--|
| RW | Olive Drab Cadmium: 2,000 hrs. salt spray, -65dB@10GHz | |
|-----------|--|--|

3. Service Class, Composite 200°C

| | | |
|-----------|--|--|
| RF | Electroless Nickel: 2,000 hrs. salt spray, -65dB@10GHz | |
|-----------|--|--|

3. Service Class, Stainless Steel 200°C

| | | |
|------------|--|--|
| RK | Corrosion Resistant Stainless Steel: (Firewall) 500 hrs. salt spray resistance, -65dB@10GHz | |
| RKN | Corrosion Resistant Passivated Stainless Steel: (Non-Firewall), 500 hrs. salt spray resistance, -65dB@10GHz | |
| RS | (Non-Hermetic), Nickel plated: Corrosion resistant steel, (firewall), 500 hrs. salt spray, 200°C, EMI shielding -65dB @ 10GHz specification min. | |
| RL | Corrosion Resistant Steel: Nickel Plated, (Non-Firewall) 500 hrs. salt spray, -50dB@10GHz | |

4. Shell Size & Insert Arrangement

Refer to Amphenol Insert Arrangement table. Coded numbers not available for size 8 contacts, see Amphenol for how to order.

5. Contact Type

| | |
|----------|-----------------|
| P | Pin Contacts |
| S | Socket Contacts |

HOW TO ORDER

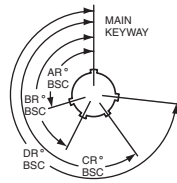
| 6. ALTERNATE KEYING | | | | | |
|---------------------|--|----------------|----------------|----------------|----------------|
| Shell Size | Key & Keyway Arrangement Identification Letter | AR° or AP° BSC | BR° or BP° BSC | CR° or CP° BSC | DR° or DP° BSC |
| 9 | *Blank | 105 | 140 | 215 | 265 |
| | A | 102 | 132 | 248 | 320 |
| | B | 80 | 118 | 230 | 312 |
| | C | 35 | 140 | 205 | 275 |
| | D | 64 | 155 | 234 | 304 |
| 11, 13, and 15 | *Blank | 95 | 141 | 208 | 236 |
| | A | 113 | 156 | 182 | 292 |
| | B | 90 | 145 | 195 | 252 |
| | C | 53 | 156 | 220 | 255 |
| | D | 119 | 146 | 176 | 298 |
| 17 and 19 | *Blank | 80 | 142 | 196 | 293 |
| | A | 135 | 170 | 200 | 310 |
| | B | 49 | 169 | 200 | 244 |
| | C | 66 | 140 | 200 | 257 |
| | D | 62 | 145 | 180 | 280 |
| 21, 23, and 25 | *Blank | 80 | 142 | 196 | 293 |
| | A | 135 | 170 | 200 | 310 |
| | B | 49 | 169 | 200 | 244 |
| | C | 66 | 140 | 200 | 257 |
| | D | 62 | 145 | 180 | 280 |
| 25L, 33, and 37 | *Blank | 80 | 142 | 188 | 293 |
| | A | 135 | 170 | 188 | 310 |
| | B | 49 | 169 | 188 | 244 |
| | C | 66 | 140 | 188 | 257 |
| | D | 62 | 145 | 188 | 280 |
| 25L, 33, and 37 | E | 79 | 153 | 188 | 272 |

* Leave blank for Normal Rotation

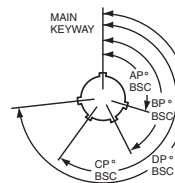
KEY/KEYWAY POSITION

A plug with a given rotation letter will mate with a receptacle with the same rotation letter. The angles for a given connector are the same whether it contains pins or sockets. Master key stays fixed, minor keys rotate. Inserts are not rotated in conjunction with the master key/keyway.

RECEPTACLE
(front face shown)



PLUG
(front face shown)



7. PCB LENGTH

Note: Nominal +/- .040"

| Contact Stickout | Pin Contacts | Pin Contacts with Alignment Disk |
|------------------|--------------|----------------------------------|
| .150" | (P15) | (P15AD) |
| .250" | (P25) | (P25AD) |
| .350" | (P35) | (P35AD) |

| Contact Stickout | Socket Contacts | Socket Contacts with Alignment Disk |
|------------------|-----------------|-------------------------------------|
| .150" | (S15) | (S15AD) |
| .250" | (S25) | (S25AD) |
| .350" | (S35) | (S35AD) |

Pre-Tin Options: Add "T"
to end of suffix for Pre-tinned PC tails
Example: (P15T), (S25ADT)

7. PCB LENGTH FOR HD38999 ONLY

9-9, 11-19, 13-32, 15-55, 17-73, 19-88, 21-121, 23-151, 25-187

| PCB tail stickout +/- .040 inch | Without Alignment Disk | | With Alignment Disc | |
|---------------------------------|------------------------|---------|---------------------|---------|
| | Pins | Sockets | Pins | Sockets |
| .100" nominal | (P1) | (S1) | (P1AD) | (S1AD) |
| .150" nominal | (P15) | (S15) | (P15AD) | (S15AD) |
| .200" nominal | (P2) | (S2) | (P2AD) | (S2AD) |
| .250" nominal | (P25) | (S25) | (P25AD) | (S25AD) |
| .300" nominal | (P3) | (S3) | (P3AD) | (S3AD) |
| .350" nominal | (P35) | (S35) | (P35AD) | (S35AD) |

PCB WALL MOUNTING RECEPTACLE (00)

BACK PANEL MOUNTING

Aluminum

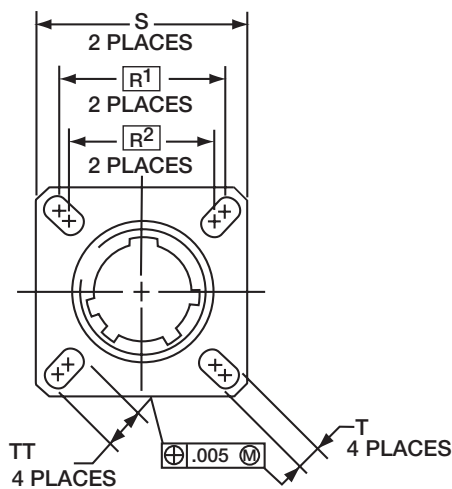
TVPS00RF
TVP00RW
TVP00DT
TVP00DZ
TVPS00DS
TVPS00DB
TVPS00RB
TVP00DW

Steel

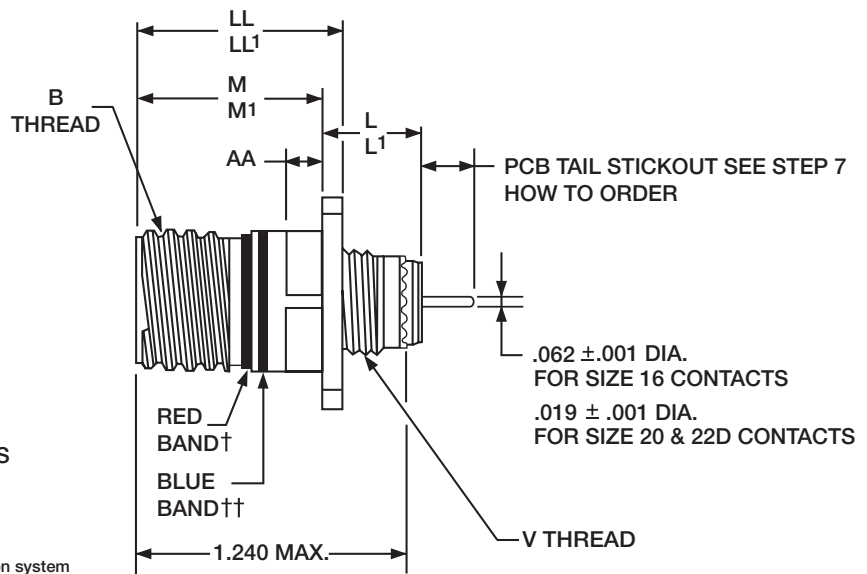
TVPS00RK
TVPS00RKN
TVPS00RL
TVPS00RS

Composite

CTVP00RW
CTVPS00RF



† Red band indicates fully mated
†† Blue band indicates rear release contact retention system



| Shell Size | B Thread Class 2A (Plated) 0.1P-0.3L-TS | L Max. (TV) | L1 Max. (CTV) | M +.000 -0.005 (TV) | M1 +.000 -0.005 (CTV) | R1 | R2 | S Max. | T +.008 -0.006 | V Thread Metric | AA Max. Panel Thickness | LL +.006 -0.000 (TV) | LL1 ±.005 (CTV) | TT +.008 -0.006 |
|------------|---|-------------|---------------|---------------------|-----------------------|-------|-------|--------|----------------|-----------------|-------------------------|----------------------|-----------------|-----------------|
| 9 | .6250 | .469 | .514 | .820 | .773 | .719 | .594 | .948 | .128 | M12X1-6g | .234 | .905 | .908 | .216 |
| 11 | .7500 | .469 | .514 | .820 | .773 | .812 | .719 | 1.043 | .128 | M15X1-6g | .234 | .905 | .908 | .194 |
| 13 | .8750 | .469 | .514 | .820 | .773 | .906 | .812 | 1.137 | .128 | M18X1-6g | .234 | .905 | .908 | .194 |
| 15 | 1.0000 | .469 | .514 | .820 | .773 | .969 | .906 | 1.232 | .128 | M22X1-6g | .234 | .905 | .908 | .173 |
| 17 | 1.1875 | .469 | .514 | .820 | .773 | 1.062 | .969 | 1.323 | .128 | M25X1-6g | .234 | .905 | .908 | .194 |
| 19 | 1.2500 | .469 | .514 | .820 | .773 | 1.156 | 1.062 | 1.449 | .128 | M28X1-6g | .234 | .905 | .908 | .194 |
| 21 | 1.3750 | .500 | .545 | .790 | .741 | 1.250 | 1.156 | 1.575 | .128 | wM31X1-6g | .204 | .905 | .904 | .194 |
| 23 | 1.5000 | .500 | .545 | .790 | .741 | 1.375 | 1.250 | 1.701 | .154 | M34X1-6g | .204 | .905 | .904 | .242 |
| 25 | 1.6250 | .500 | .545 | .790 | .741 | 1.500 | 1.375 | 1.823 | .154 | M37X1-6g | .204 | .905 | .904 | .242 |

All dimensions for reference only.

Most common options are shown; other options are available.

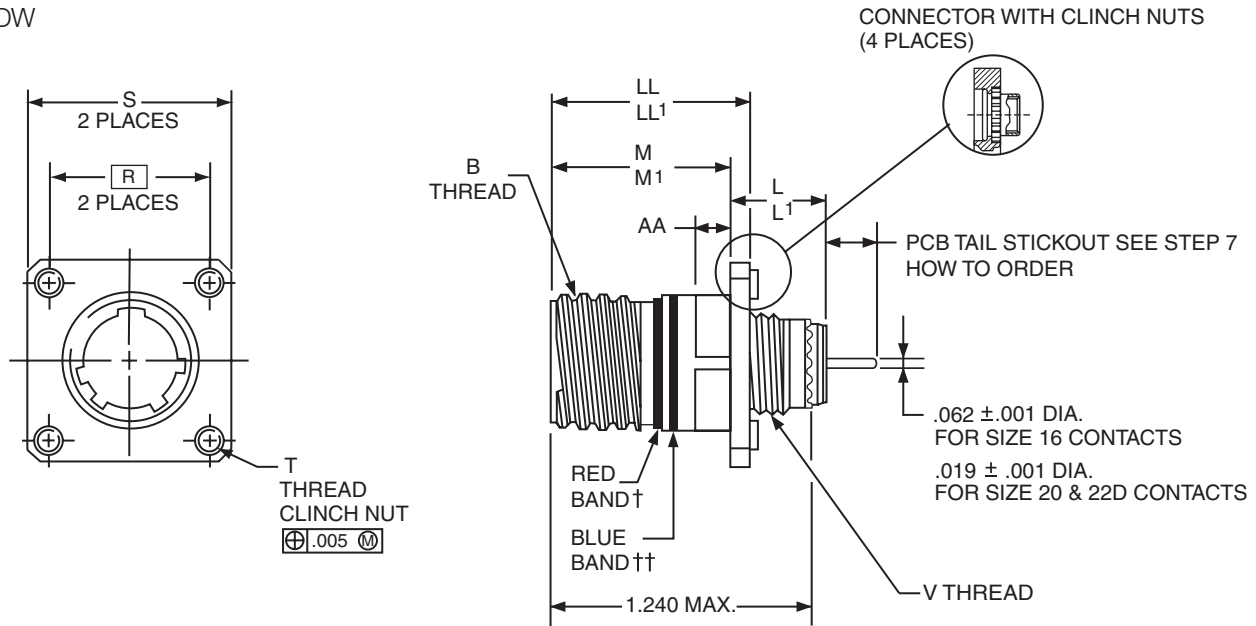
□ Designates true position dimensioning

PCB WALL MOUNTING RECEPTACLE (10)

BACK PANEL MOUNTING (WITH CLINCH NUTS)

Aluminum Steel

- | | |
|----------|-----------|
| TVPS10RF | TVPS10RK |
| TVP10RW | TVPS10RKN |
| TVP10DT | TVPS10RL |
| TVP10DZ | TVPS10RS |
| TVPS10DS | |
| TVPS10DB | |
| TVPS10RB | |
| TVP10DW | |



| Shell Size | B Thread Class 2A (Plated) 0.1P-0.3L-TS | L Max. (TV) | L' Max. (CTV) | M +.000 - .005 (TV) | M' +.000 - .005 (CTV) | R | S Max. | T Thread | V Thread Metric | AA Max. Panel Thickness | LL +.006 - .000 (TV) | LL' ±.005 (CTV) |
|------------|---|-------------|---------------|---------------------|-----------------------|-------|--------|---------------|-----------------|-------------------------|----------------------|-----------------|
| 9 | .6250 | .469 | .514 | .820 | .773 | .719 | 1.094 | .112-40UNC-3B | M12X1-6g | .234 | .905 | .908 |
| 11 | .7500 | .469 | .514 | .820 | .773 | .812 | 1.187 | .112-40UNC-3B | M15X1-6g | .234 | .905 | .908 |
| 13 | .8750 | .469 | .514 | .820 | .773 | .906 | 1.281 | .112-40UNC-3B | M18X1-6g | .234 | .905 | .908 |
| 15 | 1.0000 | .469 | .514 | .820 | .773 | .969 | 1.344 | .112-40UNC-3B | M22X1-6g | .234 | .905 | .908 |
| 17 | 1.1875 | .469 | .514 | .820 | .773 | 1.062 | 1.437 | .112-40UNC-3B | M25X1-6g | .234 | .905 | .908 |
| 19 | 1.2500 | .469 | .514 | .820 | .773 | 1.156 | 1.531 | .112-40UNC-3B | M28X1-6g | .234 | .905 | .908 |
| 21 | 1.3750 | .500 | .545 | .790 | .741 | 1.250 | 1.625 | .112-40UNC-3B | M31X1-6g | .204 | .905 | .904 |
| 23 | 1.5000 | .500 | .545 | .790 | .741 | 1.375 | 1.750 | .138-32UNC-3B | M34X1-6g | .204 | .905 | .904 |
| 25 | 1.6250 | .500 | .545 | .790 | .741 | 1.500 | 1.875 | .138-32UNC-3B | M37X1-6g | .204 | .905 | .904 |

All dimensions for reference only.

Consult Amphenol for more information on ordering connectors with clinch nuts.

Most common options are shown; other options are available.

□ Designates true position dimensioning

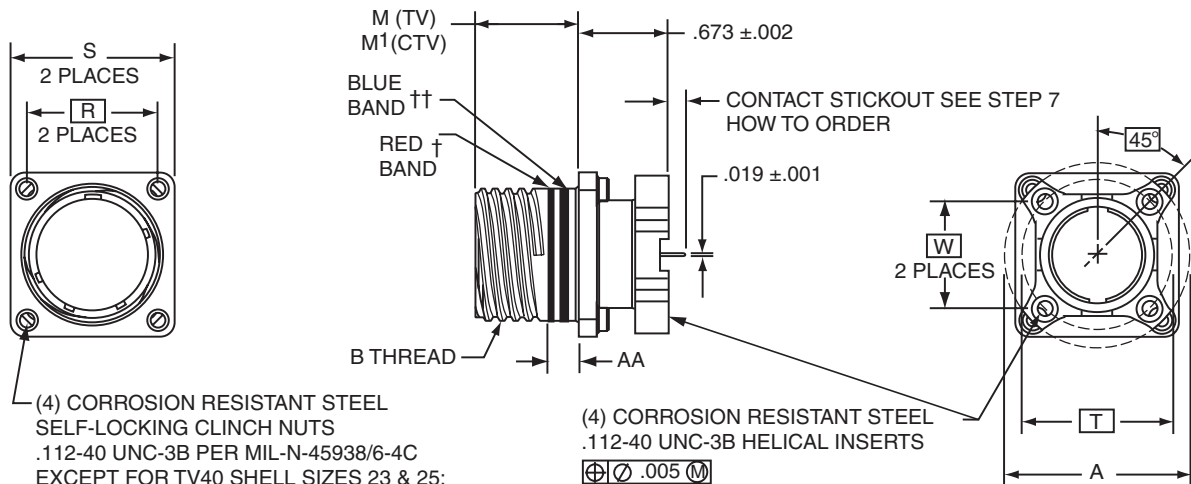
† Red band indicates fully mated

†† Blue band indicates rear release contact retention system

PCB WALL MOUNTING DOUBLE FLANGE RECEPTACLE (40)

Aluminum Steel Composite

| | | |
|----------|-----------|-----------|
| TVPS40RF | TVPS40RK | CTVP40RW |
| TVP40RW | TVPS40RKN | CTVPS40RF |
| TVP40DT | TVPS40RL | |
| TVP40DZ | TVPS40RS | |
| TVPS40DS | | |
| TVPS40DB | | |
| TVPS40RB | | |
| TVP40DW | | |



(4) CORROSION RESISTANT STEEL
SELF-LOCKING CLINCH NUTS
.112-40 UNC-3B PER MIL-N-45938/6-4C
EXCEPT FOR TV40 SHELL SIZES 23 & 25:
.138-32 UNC-3B PER MIL-N-45938/6-6C

(4) CORROSION RESISTANT STEEL
.112-40 UNC-3B HELICAL INSERTS
⊕∅.005 M

⊕∅.005 M

| Shell Size | MS Shell Size Code (For Ref.) | A Dia. ±.005 (TV) | A Dia. ±.005 (CTV) | B Thread Class 2A (Plated) 0.1P-0.3L-TS | M +.000 - .005 | M' ±.003 (CTV) | R (Panel Mount) (CTV) | R (Panel Mount) (TV) | S Max. (TV) | S Max. (CTV) | AA Max. Panel Thickness | PCB Mounting Dimensions | |
|------------|-------------------------------|-------------------|--------------------|---|----------------|----------------|-----------------------|----------------------|-------------|--------------|-------------------------|-------------------------|------------|
| | | | | | | | | | | | | T Dia. (TV) TP | W (CTV) TP |
| 9 | A | NA | 1.016 | .6250 | .820 | .770 | .719 | N/A | NA | .949 | .234 | NA | .532 |
| 11 | B | 1.062 | 1.148 | .7500 | .820 | .770 | .812 | .766 | 1.187 | 1.042 | .234 | .850 | .601 |
| 13 | C | 1.250 | 1.250 | .8750 | .820 | .770 | .906 | .859 | 1.281 | 1.136 | .234 | .994 | .703 |
| 15 | D | 1.375 | 1.375 | 1.0000 | .820 | .770 | .969 | .938 | 1.344 | 1.230 | .234 | 1.119 | .791 |
| 17 | E | 1.500 | 1.500 | 1.1875 | .820 | .770 | 1.062 | 1.016 | 1.437 | 1.323 | .234 | 1.237 | .875 |
| 19 | F | 1.625 | 1.625 | 1.2500 | .820 | .770 | 1.156 | 1.110 | 1.531 | 1.449 | .234 | 1.379 | .975 |
| 21 | G | 1.750 | 1.750 | 1.3750 | .820 | .738 | 1.250 | 1.206 | 1.625 | 1.573 | .204 | 1.489 | 1.053 |
| 23 | H | 1.875 | 1.875 | 1.5000 | .820 | .738 | 1.375 | 1.312 | 1.750 | 1.699 | .204 | 1.619 | 1.195 |
| 25 | J | 2.000 | 2.000 | 1.6250 | .820 | .738 | 1.500 | 1.438 | 1.875 | 1.823 | .204 | 1.744 | 1.233 |

All dimensions for reference only.

† Red band indicates fully mated
†† Blue band indicates rear release contact retention system

PCB BOX MOUNTING RECEPTACLE (02)

Aluminum

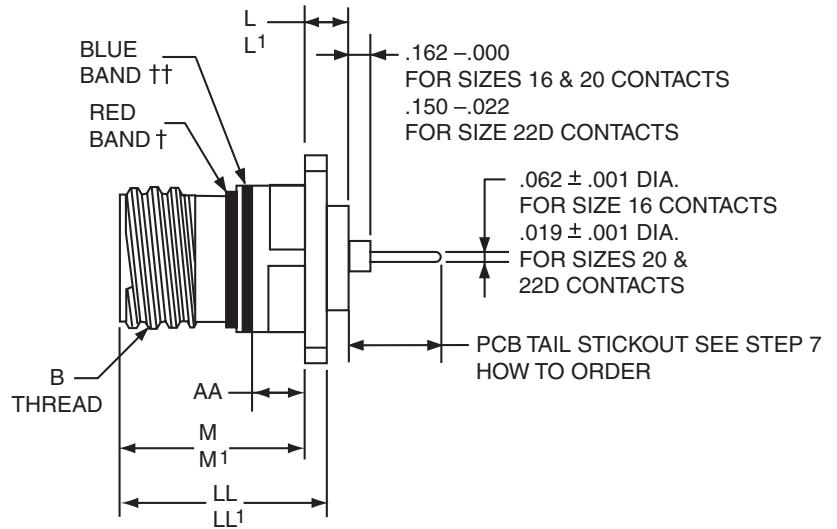
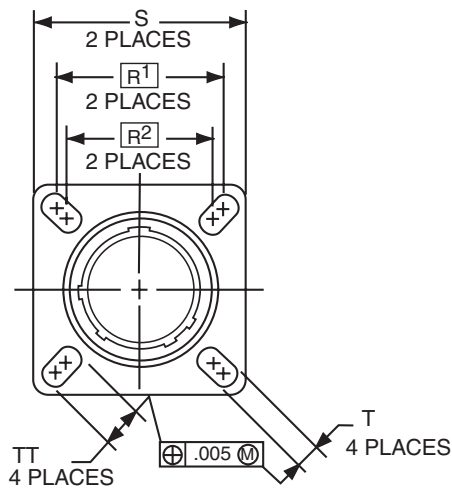
TVPS02RF
TVP02RW
TVP02DT
TVP02DZ
TVPS02DS
TVPS02DB
TVPS02RB
TVP02DW

Steel

TVPS02RK
TVPS02RKN
TVPS02RL
TVPS02RS

Composite

CTVP02RW
CTVPS02RF



| Shell Size | B Thread Class 2A (Plated) 0.1P-0.3L-TS | L Max. (TV) | L ¹ Max. (CTV) | M +.000 - .005 (TV) | M ¹ +.000 - .005 (CTV) | R ¹ | R ² | S Max. | T +.008 - .006 | AA Max. Panel Thickness | LL +.006 - .000 (TV) | LL ¹ ±.005 (CTV) | TT ±.008 |
|------------|---|-------------|---------------------------|---------------------|-----------------------------------|----------------|----------------|--------|----------------|-------------------------|----------------------|-----------------------------|----------|
| 9 | .6250 | .205 | .250 | .820 | .773 | .719 | .594 | .948 | .128 | .234 | .905 | .908 | .216 |
| 11 | .7500 | .205 | .250 | .820 | .773 | .812 | .719 | 1.043 | .128 | .234 | .905 | .908 | .194 |
| 13 | .8750 | .205 | .250 | .820 | .773 | .906 | .812 | 1.137 | .128 | .234 | .905 | .908 | .194 |
| 15 | 1.0000 | .205 | .250 | .820 | .773 | .969 | .906 | 1.232 | .128 | .234 | .905 | .908 | .173 |
| 17 | 1.1875 | .205 | .250 | .820 | .773 | 1.062 | .969 | 1.323 | .128 | .234 | .905 | .908 | .194 |
| 19 | 1.2500 | .205 | .250 | .820 | .773 | 1.156 | 1.062 | 1.449 | .128 | .234 | .905 | .908 | .194 |
| 21 | 1.3750 | .235 | .280 | .790 | .741 | 1.250 | 1.156 | 1.575 | .128 | .204 | .905 | .904 | .194 |
| 23 | 1.5000 | .235 | .280 | .790 | .741 | 1.375 | 1.250 | 1.701 | .154 | .204 | .905 | .904 | .242 |
| 25 | 1.6250 | .235 | .280 | .790 | .741 | 1.500 | 1.375 | 1.823 | .154 | .204 | .905 | .904 | .242 |

All dimensions for reference only.
Most common options are shown; other options are available.

- Designates true position dimensioning
- † Red band indicates fully mated
- †† Blue band indicates rear release contact retention system

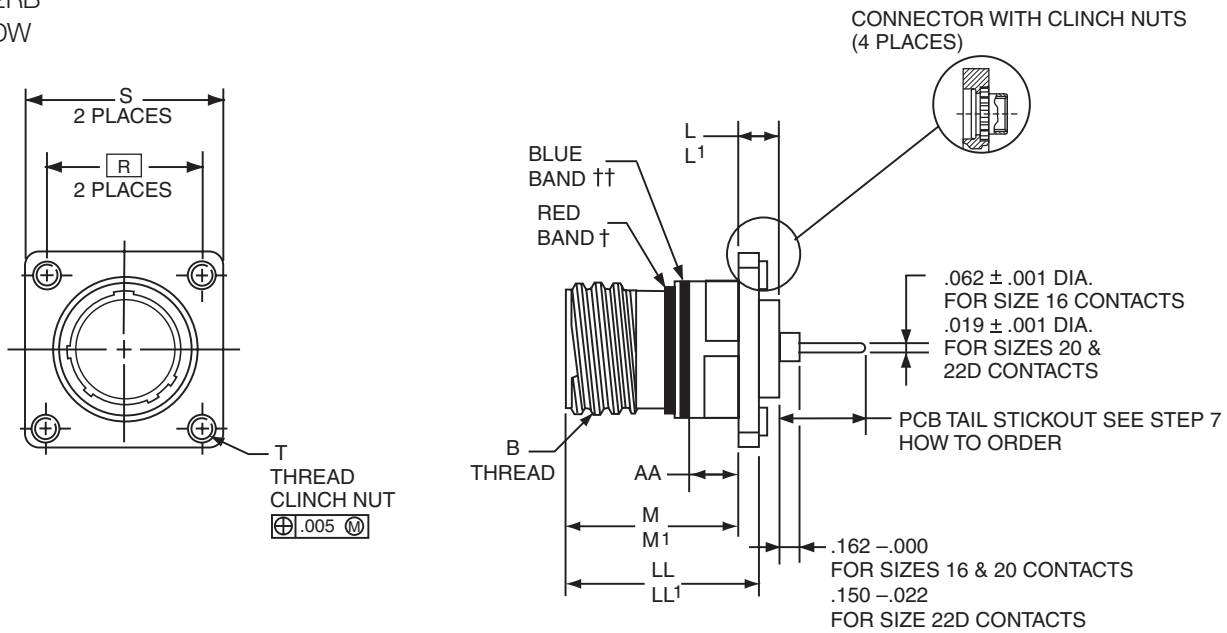
PCB BOX MOUNTING RECEPTACLE (12)

(WITH CLINCH NUTS)

Aluminum

Steel

- | | |
|----------|-----------|
| TVPS12RF | TVPS12RK |
| TVP12RW | TVPS12RKN |
| TVP12DT | TVPS12RL |
| TVP12DZ | TVPS12RS |
| TVPS12DS | |
| TVPS12DB | |
| TVPS12RB | |
| TVP12DW | |



| Shell Size | B Thread Class 2A (Plated) 0.1P-0.3L-TS | L Max. (TV) | L' Max. (CTV) | M +.000 - .005 (TV) | M' +.000 - .005 (CTV) | R | S Max. | T Thread | AA Max. Panel Thickness | LL +.006 - .000 (TV) | LL' +.006 - .000 (CTV) |
|------------|---|-------------|---------------|---------------------|-----------------------|-------|--------|---------------|-------------------------|----------------------|------------------------|
| 9 | .6250 | .205 | .250 | .820 | .773 | .719 | 1.031 | .112-40UNC-3B | .234 | .905 | .908 |
| 11 | .7500 | .205 | .250 | .820 | .773 | .812 | 1.125 | .112-40UNC-3B | .234 | .905 | .908 |
| 13 | .8750 | .205 | .250 | .820 | .773 | .906 | 1.172 | .112-40UNC-3B | .234 | .905 | .908 |
| 15 | 1.0000 | .205 | .250 | .820 | .773 | .969 | 1.281 | .112-40UNC-3B | .234 | .905 | .908 |
| 17 | 1.1875 | .205 | .250 | .820 | .773 | 1.062 | 1.375 | .112-40UNC-3B | .234 | .905 | .908 |
| 19 | 1.2500 | .205 | .250 | .820 | .773 | 1.156 | 1.469 | .112-40UNC-3B | .234 | .905 | .908 |
| 21 | 1.3750 | .235 | .280 | .790 | .741 | 1.250 | 1.562 | .112-40UNC-3B | .204 | .905 | .904 |
| 23 | 1.5000 | .235 | .280 | .790 | .741 | 1.375 | 1.750 | .112-40UNC-3B | .204 | .905 | .904 |
| 25 | 1.6250 | .235 | .280 | .790 | .741 | 1.500 | 1.875 | .112-40UNC-3B | .204 | .905 | .904 |

All dimensions for reference only.
Most common options are shown; other options are available.

- Designates true position dimensioning
- † Red band indicates fully mated
- †† Blue band indicates rear release contact retention system

PCB JAM NUT RECEPTACLE (07)

Aluminum

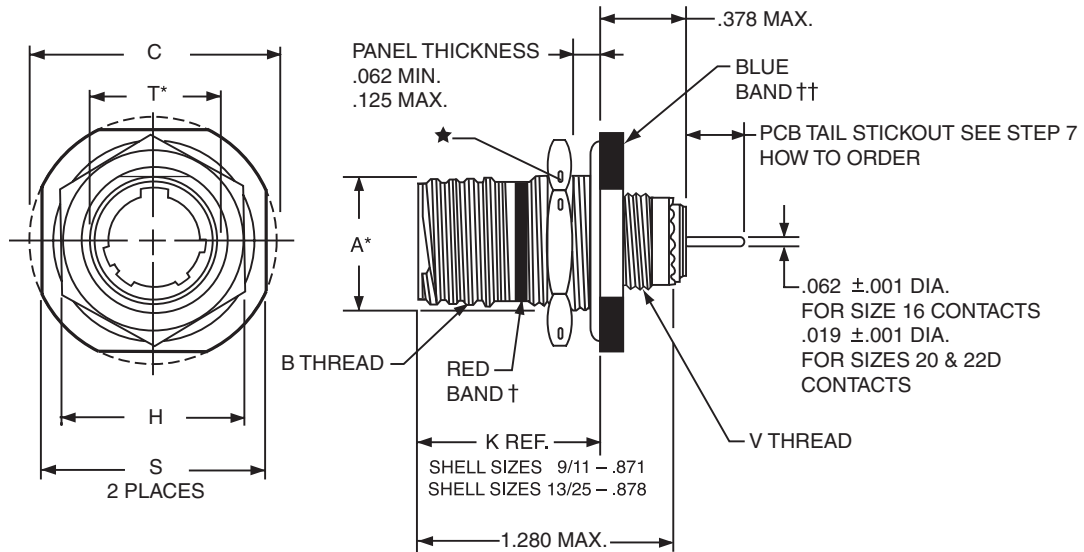
TVPS07RF
TVP07RW
TVP07DT
TVP07DZ
TVPS07DS
TVPS07DB
TVPS07RB
TVP07DW

Steel

TVPS07RK
TVPS07RKN
TVPS07RL
TVPS07RS

Composite

CTVP07RW
CTVPS07RF



| Shell Size | A* +.000 -.010 | B Thread Class 2A (Plated) 0.1P-0.3L-TS | C Max. | D1 +.010 -.000 | D2 +.010 -.000 | H Hex +.017 -.016 | S ±.010 | T +.010 -.000 | V Thread Metric |
|------------|----------------------|--|-----------|----------------------|----------------------|-------------------------|------------|---------------------|--------------------|
| 9 | .669 | .6250 | 1.199 | .700 | .670 | .875 | 1.062 | .697 | M12X1-6g |
| 11 | .769 | .7500 | 1.386 | .825 | .770 | 1.000 | 1.250 | .822 | M15X1-6g |
| 13 | .955 | .8750 | 1.511 | 1.010 | .955 | 1.188 | 1.375 | 1.007 | M18X1-6g |
| 15 | 1.084 | 1.0000 | 1.636 | 1.135 | 1.085 | 1.312 | 1.500 | 1.134 | M22X1-6g |
| 17 | 1.208 | 1.1875 | 1.761 | 1.260 | 1.210 | 1.438 | 1.625 | 1.259 | M25X1-6g |
| 19 | 1.333 | 1.2500 | 1.949 | 1.385 | 1.335 | 1.562 | 1.812 | 1.384 | M28X1-6g |
| 21 | 1.459 | 1.3750 | 2.073 | 1.510 | 1.460 | 1.688 | 1.938 | 1.507 | M31X1-6g |
| 23 | 1.575 | 1.5000 | 2.199 | 1.635 | 1.585 | 1.812 | 2.062 | 1.634 | M34X1-6g |
| 25 | 1.709 | 1.6250 | 2.323 | 1.760 | 1.710 | 2.000 | 2.188 | 1.759 | M37X1-6g |

All dimensions for reference only.
Most common options are shown;
other options are available.

† Red band indicates fully mated
†† Blue band indicates rear release contact retention system
H .059 dia. min. 3 lockwire holes. Formed lockwire hole design (6 holes) is optional. "D" shaped mounting hole dimensions

PCB JAM NUT DOUBLE FLANGE RECEPTACLES (47)

Aluminum

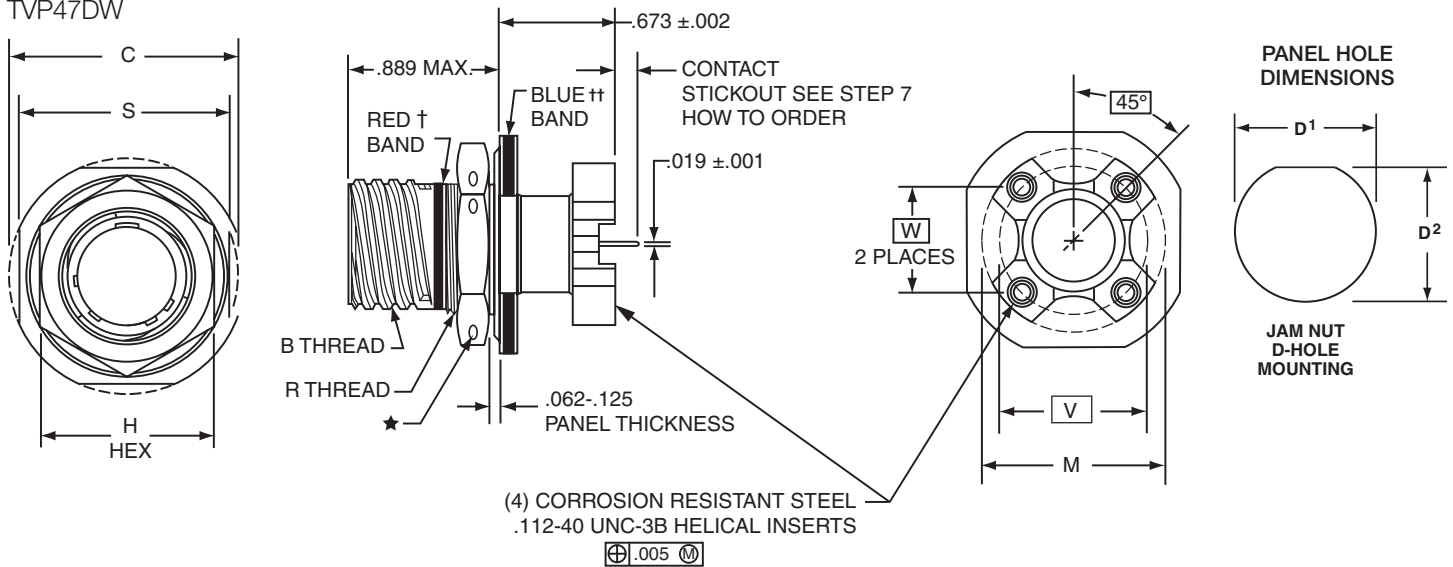
TVPS47RF
TVP47RW
TVP47DT
TVP47DZ
TVPS47DS
TVPS47DB
TVPS47RB
TVP47DW

Steel

TVPS47RK
TVPS47RKN
TVPS47RL
TVPS47RS

Composite

CTVP47RW
CTVPS47RF



| Shell Size | TV47 Coded Shell Size | CTV47 Coded Shell Size | MS Shell Size Code (For Ref.) | B Thread Class 2A 0.1P-0.3L-TS (Plated) | C ±.005 (Jam Nut Flange Dia.) | D ¹ +.010 -0.000 | D ² +.000 -0.010 | H Hex +.017 -0.016 | M Dia. ±.005 (TV) | M Dia. ±.005 (CTV) | R Thread Metric (Plated) | S +.011 -0.010 | PCB Mounting Dimensions | |
|------------|-----------------------|------------------------|-------------------------------|---|-------------------------------|-----------------------------|-----------------------------|--------------------|-------------------|--------------------|--------------------------|----------------|-------------------------|------------|
| | | | | | | | | | | | | | V Dia. (TV) TP | W (CTV) TP |
| 9 | 171 | 151 | A | .6250 | 1.188 | .700 | .670 | .875 | 1.062 | 1.016 | M17X1-6g0.100R | 1.062 | .753 | .532 |
| 11 | 172 | 152 | B | .7500 | 1.375 | .825 | .770 | 1.000 | 1.062 | 1.148 | M20X1-6g0.100R | 1.250 | .850 | .601 |
| 13 | 173 | 153 | C | .8750 | 1.500 | 1.010 | .955 | 1.188 | 1.250 | 1.250 | M25X1-6g0.100R | 1.375 | .994 | .703 |
| 15 | 174 | 154 | D | 1.0000 | 1.625 | 1.135 | 1.085 | 1.312 | 1.375 | 1.375 | M28X1-6g0.100R | 1.500 | 1.119 | .791 |
| 17 | 175 | 155 | E | 1.1875 | 1.750 | 1.260 | 1.210 | 1.438 | 1.500 | 1.500 | M32X1-6g0.100R | 1.625 | 1.237 | .875 |
| 19 | 176 | 156 | F | 1.2500 | 1.937 | 1.385 | 1.335 | 1.562 | 1.625 | 1.625 | M35X1-6g0.100R | 1.812 | 1.379 | .975 |
| 21 | 177 | 157 | G | 1.3750 | 2.062 | 1.510 | 1.460 | 1.688 | 1.750 | 1.750 | M38X1-6g0.100R | 1.937 | 1.489 | 1.053 |
| 23 | 178 | 158 | H | 1.5000 | 2.188 | 1.635 | 1.585 | 1.812 | 1.875 | 1.875 | M41X1-6g0.100R | 2.062 | 1.644 | 1.145 |
| 25 | 179 | 159 | J | 1.6250 | 2.312 | 1.760 | 1.710 | 2.000 | 2.000 | 2.000 | M44X1-6g0.100R | 2.188 | 1.744 | 1.233 |

All dimensions for reference only.

† Red band indicates fully mated

†† Blue band indicates rear release contact retention system.

H .059 dia. min. **(1.5 dia. min.)** 3 lockwire holes. Formed lockwire hole design (6 holes) is optional.

Notice: Specifications are subject to change without notice. Contact your nearest Amphenol Corporation Sales Office for the latest specifications. All statements, information and data given herein are believed to be accurate and reliable but are presented without guarantee, warranty, or responsibility of any kind, expressed or implied. Statements or suggestions concerning possible use of our products are made without representation or warranty that any such use is free of patent infringement and are not recommendations to infringe any patent. The user should assume that all safety measures are indicated or that other measures may not be required. Specifications are typical and may not apply to all connectors.

AMPHENOL is a registered trademark of Amphenol Corporation. ©2020 Amphenol Corporation REV:4/29/2020