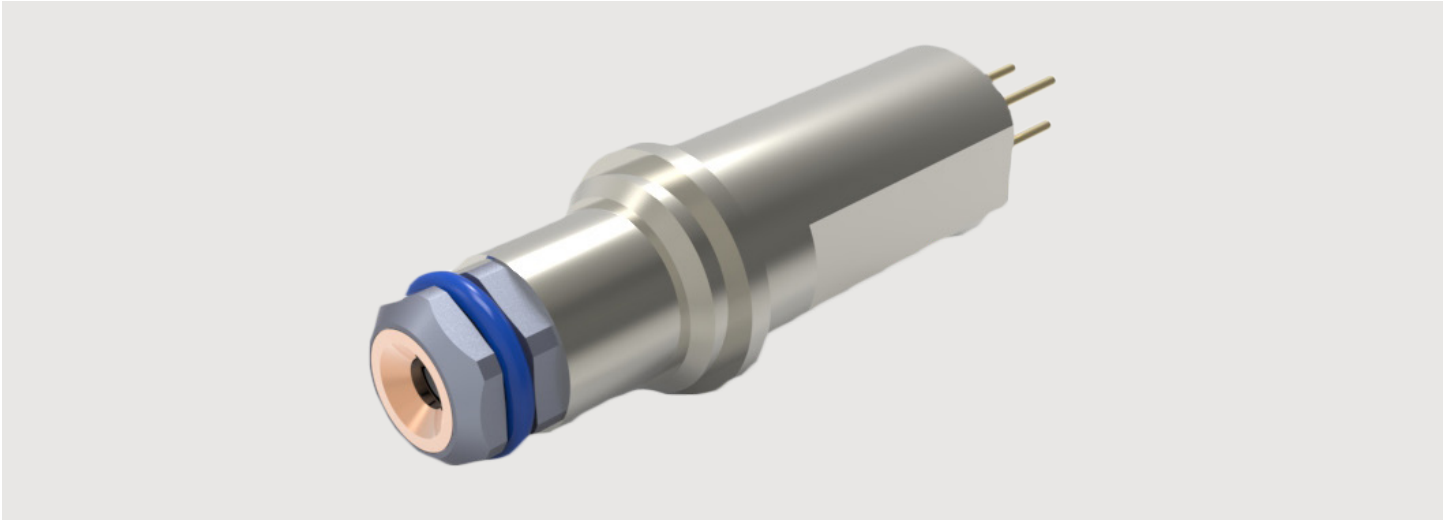


AMPHENOL ARINC-600 CTF QUAD

ARINC-600 CTF QUAD



Amphenol Aerospace adds ARINC-600 CTF QUAD to the CTF (Copper to Fiber) Media Converter Product Family.

This product line utilizes standard quadrx receptacle connectors and inserts. The ARINC-600 CTF QUAD product line is fiber to copper and copper to fiber media conversion in quadrx form factor pins for standard D38999 quadrx insert arrangements.

FIBER INTERFACE:

- Signal Intelligence (SIGINT)
- Industry standard 1.25mm fiber optic ferrules (LC & ARINC-801)
- Plug/Recpt. side utilizes quadrx to ARINC-801 pin adapter for system fiber connection
- Multimode fiber
- Compatible with Arinc 600 / 404, EN 4165 & MIL-DTL-83527 Size 8Q cavities

COPPER INTERFACE:

- Speed support up to 5.0 Gbps for transmit and receive
- PCB lead connection to customer circuit board
- CML compatibility
- 6 pin PC tail field
- Monitor pin on receiver
- Transmit disable and fault detector pin on transmitter
- 50Ω differential pair for data input / output

FEATURES & BENEFITS:

- Quadrx form factor embedded fiber optic transmitters and receivers
- Replace any quadrx pin in receptacle and configure with media conversion copper to fiber and fiber to copper
- Utilizes standard quadrx receptacle connectors and inserts
- Integrated PCB to modulate or receive modulated data
- Reduce board space by relying on electronics being incorporated within contact
- < 10-12 BER with 2mVP-P Input Amplitude
- AC coupling caps included for signal lines

ARIC-600 CTF QUAD

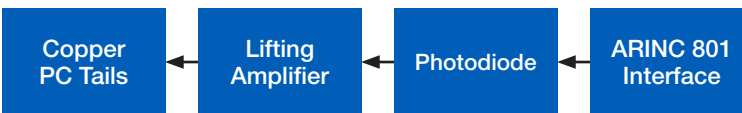
Transmitter (Size 8 Cavity)

Pin #	Function	Description	
1	Disable	Transmit Disable - Input Logic "0" Transmits Logic "1" Disables Output	
2	Vcc	Supply Voltage	Filtered
3	GND	Ground	
4	Fault	Loss of Signal - Threshold (TH) of Acceptance May be Adjusted Logic "0" Above TH Logic "1" Drops Below TH	Open Collector TTL/CMOS
5	Input-	Inverted Data Output	CML
6	Input+	Non-Inverted Data Output	CML



Receiver (Size 8 Cavity)

Pin #	Function	Description	
1	GND	Ground	
2	Vcc	Supply Voltage	Filtered
3	GND	Ground	
4	LOS	Loss of Signal - Threshold (TH) of Acceptance May be Adjusted Logic "0" Above TH Logic "1" Drops Below TH	Open Collector TTL/CMOS
5	Input-	Inverted Data Output	CML
6	Input+	Non-Inverted Data Output	CML



RUGGEDIZATION:

- Industry standard rugged transmitters and receivers -40°C to +85°C
- Components epoxy sealed in place

APPLICATIONS:

- 10G LX4
- 1G/2G Fiber Channel
- Gigabit Ethernet
- Serial Rapid I/O
- PCI - Express
- Multi-rate OC-3 to OC-48 FEC
- 10-Gigabit Ethernet WWDM
- sFPDP links
- Video displays

PCB MOUNTING SURFACE

