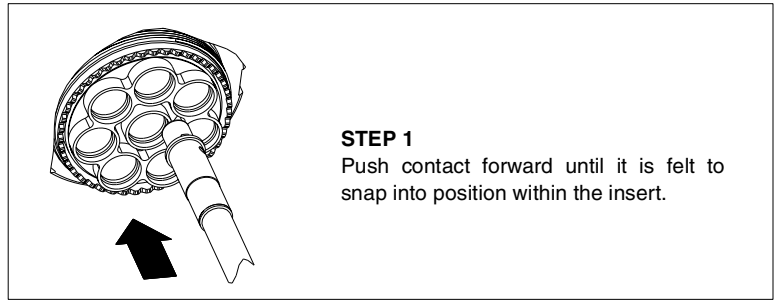


**Installation Instructions
(General Insertion and Removal)
for Size 8 Coax, Concentric Twinax & Triax Contacts
with Piggyback Sealing Method**

Contact/Cable Insertion into Connector

Contacts are inserted by hand. Insert the contact assembly into the proper rear grommet hole. Contact must be aligned with hole and not inserted at an angle.

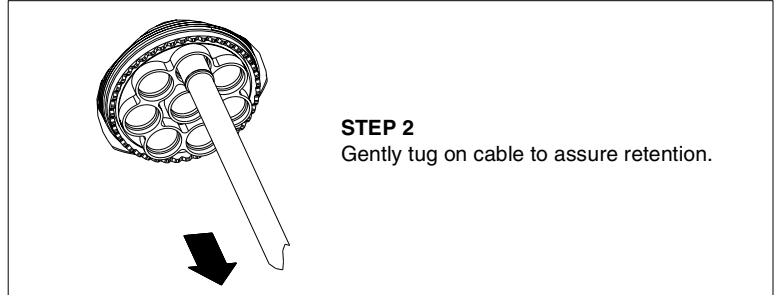


STEP 1

Push contact forward until it is felt to snap into position within the insert.

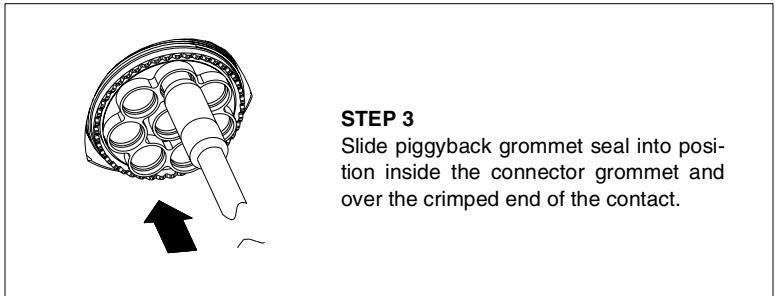
Contact/Cable Removal from Connector

Remove piggyback grommet seal from the connector grommet. Position removal tool part number MIL-I-81969/14-06, Daniels DRK-264-8, around cable and slide tool toward connector until tool tips enter rear grommet and comes to a positive stop on the contact. Grip cable and simultaneously remove tool, contact and cable.



STEP 2

Gently tug on cable to assure retention.



STEP 3

Slide piggyback grommet seal into position inside the connector grommet and over the crimped end of the contact.