

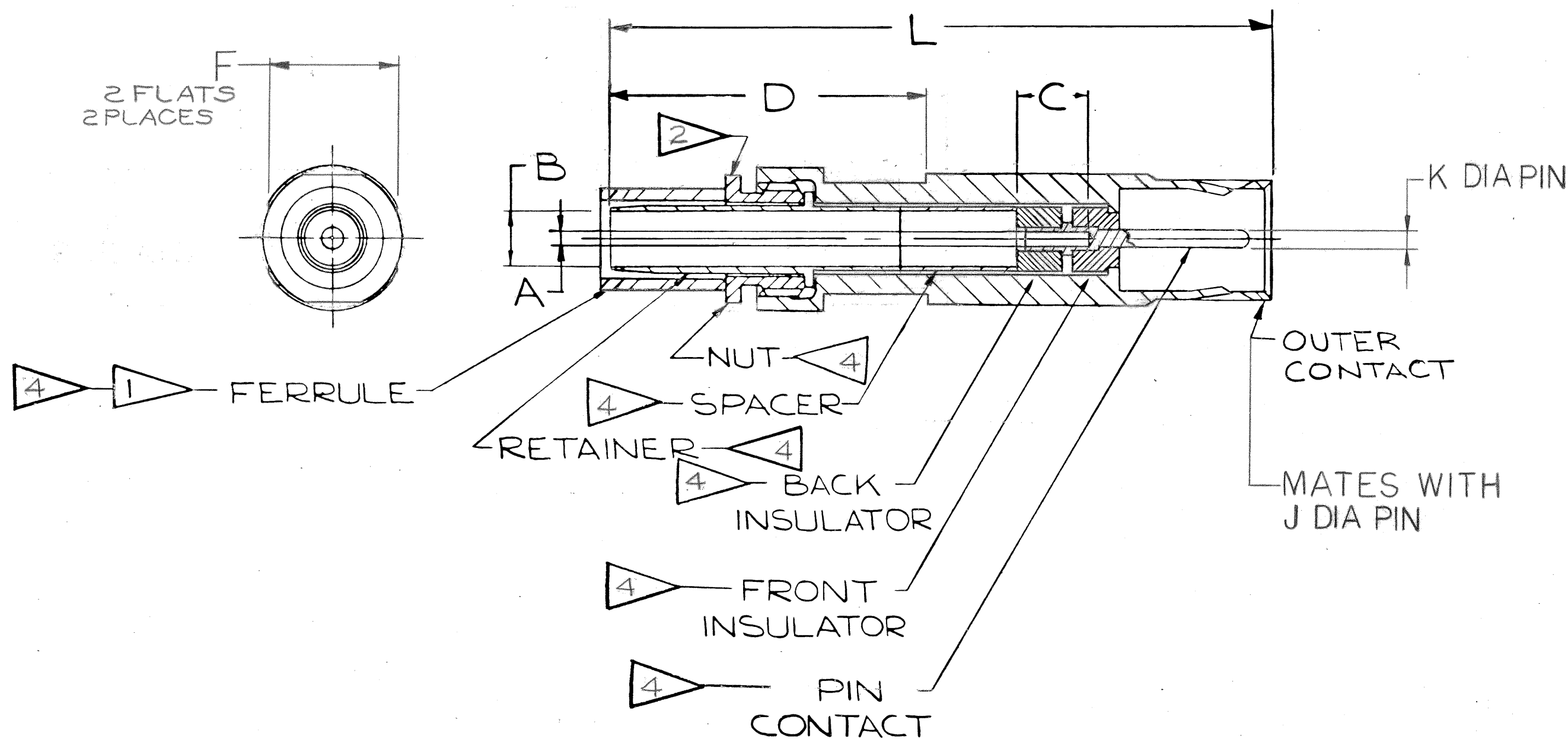
4

3

2

1

52536-9		REVISIONS		
ZONE	LTR	DESCRIPTION	DATE	APPROVED
	A <sub>1</sub>			
	A <sub>2</sub>	CHG C COL, D TOL, L LOC; ADD J & K DIM ECN: CNR	7-24-70 KNAPP	<i>Knapp</i>
	A <sub>3</sub>	REM THOMAS & BETTS COL; ADD FERRULE CRIMP TOOL COL; REV NOTE 1 ECN 55809-17	6-18-74 <i>Randall</i>	<i>Hayes</i>
	B	(MFG) REV SOCKET KIT COL ECN: 58118-65	12-23-77 EDWARDS	<i>Edwards</i>
	C	(CLID) ADDED -4 ECN: 97489	7-12-05 Prescott	<i>Prescott</i>



FIND NO.	QTY REQD	CODE IDENT	PART NUMBER	DESCRIPTION	NOTE REF
<b>PARTS LIST</b>					
UNLESS OTHERWISE SPECIFIED LINEAR DIMENSIONS ARE IN INCHES. TOLERANCES: .XXX ± .010, .XX ± .02, .X ± .1, ANGLES ± 2°. OTHER STANDARDS PER 9-3800 AND MIL-D-1000. NOTE REF			SIGNATURES	DATES	The Bendix Corporation Electrical Components Division Sidney, New York  TITLE: CONTACT, SOCKET, ELECTRICAL CONNECTOR, COAXIAL CABLE, GOLD PLATED, QWL
MATERIAL SPEC			PREPARED	11-19-69	
			CHECKED	2-12-70	
PROCESS SPEC			APPROVED	12-29-69	
			APPROVED	2-19-70	
			SIZE	CODE IDENT NO.	C 77820 21-33047
			SCALE	WT	
			NONE	SEE COLUMN	REF 21-33033
					SHEET 1 OF 2

SEE SHEET 2

NOTES:

USE OF THIS DOCUMENT IS UNLIMITED. DOCUMENTS REFERENCED HEREON CONTAIN LIMITED RIGHTS DATA.

NEXT ASSEMBLY

21-33047

4

3

2

1

ASSEMBLY NUMBER	COAX CONTACT SIZE	USE WITH RG CABLE NO.	OUTER CONTACT	SOCKET KIT	A	B	C	D	F	L	J	K	FERRULE CRIMP TOOL M22520/5-01		WT-LB
					+ .0020 - .0005	+ .0020 - .0025	± .013	+ .021 - .019	+ .003 - .004	REF	± .001	DIA	DIE P/N	DIE CLOSURE	
21-33047-1	12	174,188	21-427-1E	21-33141-1F	.0225	.0690	.159	.749	.172	1.511	.128	.0200 ±.0005	-08	-	
21-33047-2	8	58,141	21-427-2E	21-33141-2F	.0410	.1230	.159	.749	.280	1.511	.218	.0355 ±.0010	-05	B	
21-33047-3	8	195,180	21-427-2E	21-33141-6F	.0225	.1090	.159	.749	.280	1.511	.218	.0355 ±.0010	-05	B	
-4	8		21-427-2E		.0225	.1230	.159	.749	.280	1.511	.218	.0355 ±.0010	-05	B	

5. FOR RELEASE STATUS OF DESIRED UNIT, SEE SEPARATE PARTS LIST.

4. DRAWING ILLUSTRATES FINAL ASSY. INDICATED COMPONENTS ARE PART OF SOCKET KIT. SOCKET KIT TO BE PACKAGED PER PRODUCTION PROCESS SHEET.

3. CONTACT ASSEMBLIES WILL ACCOMMODATE OTHER EQUIVALENT COAXIAL CABLE.

2. TORQUE ON NUT FOR SIZE 12 CONTACT SHALL BE 16 TO 20 IN. OZ, AND 30 TO 36 IN. OZ, FOR SIZE 8 CONTACT.

1. WHEN ASSEMBLING THIS CONTACT TO SPECIFIED CABLE, CRIMP INDICATED FERRULE WITH TOOL INDICATED IN COLUMN OR EQUIVALENT. FOR COMPLETE INSTALLATION INFORMATION, SEE INSTRUCTIONS L-650.

NOTES:

SIZE	CODE IDENT NO.	
C	77820	21-33047

REV SYM	A1	A2	A3	B								SCALE	WT	REF	SHEET	2
---------	----	----	----	---	--	--	--	--	--	--	--	-------	----	-----	-------	---

21-33047