

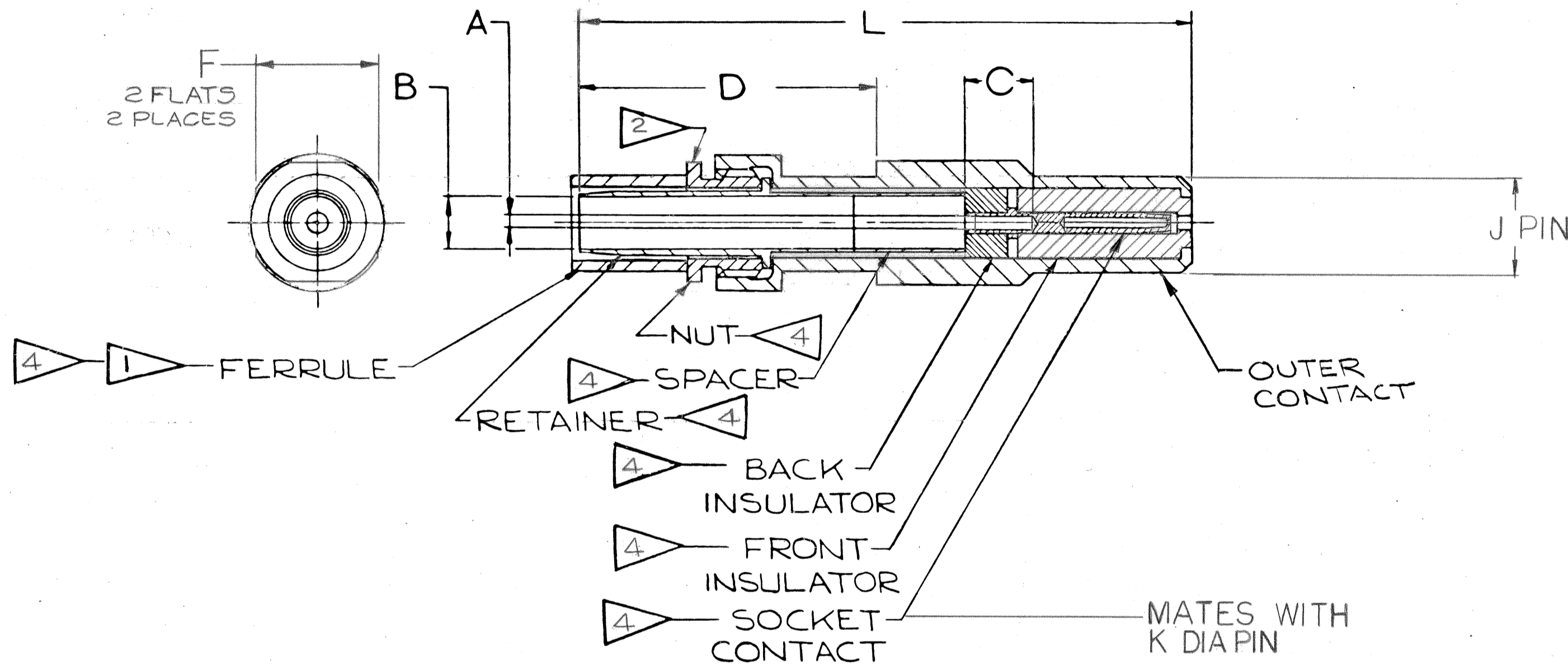
4

3

2

1

52536-9		REVISIONS		
ZONE	LTR	DESCRIPTION	DATE	APPROVED
	A1			
	A2	CHG C COL, L LOC; ADD J & K DIM ECN: CNR	7-24-70 KNAPP	<i>Knapp</i>
	A3	REM THOMAS & BETTS COL; ADD FERRULE CRIMP TOOL COL; REV NOTE 1 ECN 55809-18	6-18-74 <i>Randall</i>	<i>Hayes</i>
	B	(CLII) ADDED -4 ECN: 97489	7-12-05 Prescott	<i>Prescott</i>



SEE SHEET 2  
NOTES:

USE OF THIS DOCUMENT IS UNLIMITED. DOCUMENTS REFERENCED HEREON CONTAIN LIMITED RIGHTS DATA.

NEXT ASSEMBLY

FIND NO.	QTY REQD	CODE IDENT	PART NUMBER	DESCRIPTION	NOTE REF
<b>PARTS LIST</b>					
UNLESS OTHERWISE SPECIFIED LINEAR DIMENSIONS ARE IN INCHES. TOLERANCES: .XXX ± .010, .XX ± .03, .X ± .1, ANGLES ± 2°. OTHER STANDARDS PER 9-3800 AND MIL-D-1000. NOTE REF			SIGNATURES	DATES	The Bendix Corporation Electrical Components Division Sidney, New York  TITLE: CONTACT, PIN, ELECTRICAL CONNECTOR, COAXIAL CABLE, GOLD PLATED QWL
MATERIAL SPEC		PROCESS SPEC	PREPARED CROUCH	11-19-69	
			CHECKED W.N. J. WEBER	2-12-70	
			APPROVED <i>Hemmet</i>	12-29-69	
			APPROVED <i>Knapp</i>	2-19-70	
			SIZE C	CODE IDENT NO. 77820	21-33048
			SCALE NONE	WT SEE COLUMN	REF 21-33034
					SHEET 1 OF 2

4

3

2

1

ASSEMBLY NUMBER	COAX CONTACT SIZE	USE WITH RG CABLE NO.	OUTER CONTACT	PIN KIT	A	B	C	D	F	L	J	K	FERRULE CRIMP TOOL M22520/5-01		WT-LB
					DIA +.0020 -.0005	DIA +.0020 -.0025	±.013	+.019 -.018	+.003 -.004	REF	DIA ±.001	DIA	DIE P/N M22520/5	DIE CLOSURE	
21-33048-1	12	174, 188	21-315-1F	21-33089-1	.0225	.0690	.159	.749	.172	1.481	.128	.0200 ±.0005	-08	-	
21-33048-2	8	58, 141	21-315-2F	21-33089-2	.0410	.1230	.159	.749	.280	1.481	.218	.0355 ±.0010	-05	B	
21-33048-3	8	195, 180	21-315-2F	21-33089-3	.0225	.1090	.159	.749	.280	1.481	.218	.0355 ±.0010	-05	B	
-4 8 21-315-2F					.0225	.1230	.159	.749	.280	1.481	.218	.0355 ±.0010	-05	B	

5. FOR RELEASE STATUS OF DESIRED UNIT, SEE SEPARATE PARTS LIST.
4. DRAWING ILLUSTRATES FINAL ASSY. INDICATED COMPONENTS ARE PART OF PIN KIT. PIN KIT TO BE PACKAGED PER PRODUCTION PROCESS SHEET.
3. CONTACT ASSEMBLIES WILL ACCOMMODATE OTHER EQUIVALENT COAXIAL CABLE.
2. TORQUE ON NUT FOR SIZE 12 CONTACT SHALL BE 16 TO 20 IN. OZ, AND 30 TO 36 IN. OZ FOR SIZE 8 CONTACT.
1. WHEN ASSEMBLING THIS CONTACT TO SPECIFIED CABLE, CRIMP INDICATED FERRULE WITH TOOL INDICATED IN COLUMN OR EQUIVALENT, FOR COMPLETE INSTALLATION INFORMATION, SEE INSTRUCTIONS L-650.

NOTES:

SIZE	CODE IDENT NO.	
C	77820	21-33048
SCALE	WT	REF
		SHEET 2

REV SYM	A1	A2	A3										
---------	----	----	----	--	--	--	--	--	--	--	--	--	--