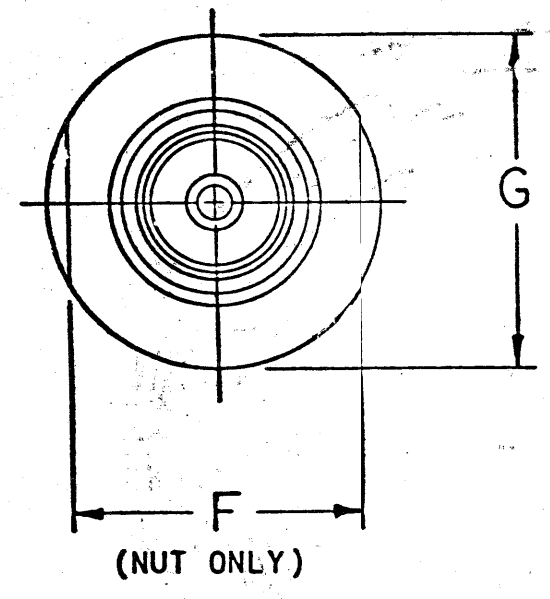
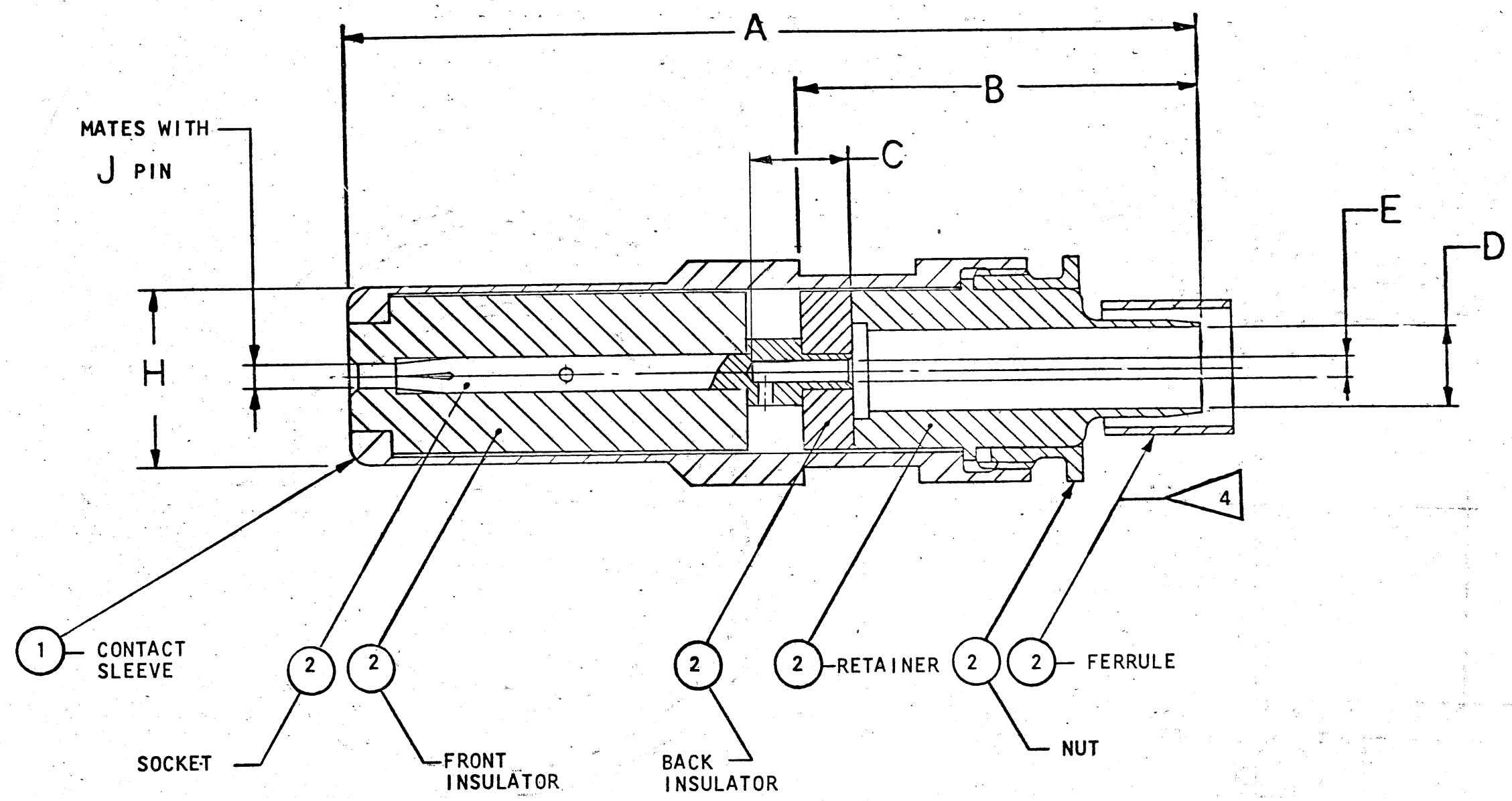


54536-151		REVISIONS		
ZONE	LTR	DESCRIPTION	DATE	APPROVED
ER6880	A1			
	A2	REDRAWN SHEET 2 ONLY, WAS .190, C ± .013 (COL), +.0025-.0020 (D DIA COL); ADDED H FINISH, -11() AND DATA, NOTES 7, 8, & 9 ECN: CNR	7-9-73 HEMMER	<i>[Signature]</i>
	A3	ADDED -12() AND DATA, REV NOTES 7 & 8. ECN: 55525-179	2-8-74 FLYZIK	<i>[Signature]</i>
	A4	REM THOMAS & BETTS COL; ADD. FERRULE CRIMP TOOL COL; REV NOTE 4 ECN 55809-20	6-18-74 <i>[Signature]</i>	<i>[Signature]</i>
	B	(MFG) REM NOTE 6; ADDED J GOLD FINISH (NOTE 1); ECN: 58118-67	12-23-77 EDWARDS	<i>[Signature]</i>



2	1		SEE COLUMN	PIN KIT	3
1	1		SEE COLUMN	CONTACT SLEEVE	
FIND NO.	QTY REQD	CODE IDENT	PART NUMBER	DESCRIPTION	NOTE REF
PARTS LIST					
UNLESS OTHERWISE SPECIFIED LINEAR DIMENSIONS ARE IN INCHES. TOLERANCES: .XXX ± .010, .XX ± .03, .X ± .1, ANGLES ± 2°. OTHER STANDARDS PER 9-3800 AND MIL-D-1000. NOTE REF			SIGNATURES	DATES	The Bendix Corporation Electrical Components Division Sidney, New York
MATERIAL SPEC			PREPARED		
PROCESS SPEC			CHECKED		
SEE NOTE 1			APPROVED		
			APPROVED		TITLE: CONTACT PIN, ELECTRICAL CONNECTOR, COAXIAL CABLE, TYPE AN
SIZE		CODE IDENT NO.	U		
C		77820	21-33060		
SCALE	NONE	WT	SEE COLUMN	REF	21-33050
					SHEET 1 OF 2

SEE SHEET 2  
NOTES:

NEXT ASSEMBLY

105059511

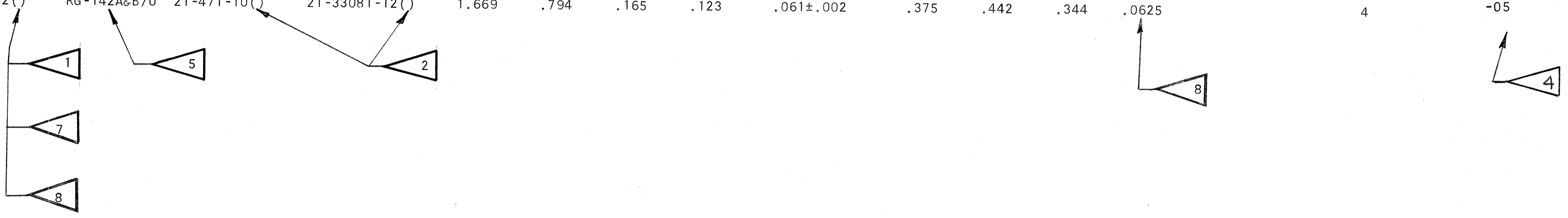
4

3

2

1

ASSEMBLY NUMBER	FOR USE WITH CABLE	CONTACT SLEEVE	PIN KIT	A	B	C	D	E	F	G	H	J	WT-LB	COAX CONTACT SIZE	FERRULE CRIMP TOOL M22520/5-01	
				+ .019 - .017	+ .024 - .023	+ .021 - .012	DIA ± .003	DIA	WRENCH FLATS	DIA MAX	DIA ± .001	DIA ± .0010			DIE PART NO. M22520/5	DIE CLOSURE
21-33060-10()	RG-62A/U	21-471-10()	21-33081-10()	1.669	.794	.165	.156	.041 +.002 -.001	.375	.442	.344	.0400		4	-45	B
21-33060-11()	RG-212/U	21-471-10()	21-33081-11()	1.669	.794	.165	.194	.061±.002	.375	.442	.344	.0625		4	-39	A
21-33060-12()	RG-142A&B/U	21-471-10()	21-33081-12()	1.669	.794	.165	.123	.061±.002	.375	.442	.344	.0625		4	-05	A



3. DRAWING ILLUSTRATES FINAL ASSEMBLY. INDICATED COMPONENTS ARE PART OF PIN KIT. PACKAGE PER PRODUCTION PROCESS SHEET.

2. LAST CHARACTER OF SUFFIX SAME AS FOR ASSEMBLY PER NOTE 1.

1. ADD LAST CHARACTER TO SUFFIX FOR FINISH:

SUFFIX LAST CHARACTER	FINISH
1	.00020 MIN SILVER OVER COPPER FLASH
2	.00005 MIN GOLD (KNOOP HARDNESS 130-200) OVER SILVER.
3	.00010 MIN GOLD (KNOOP HARDNESS 130-200) OVER SILVER.
4	.00010 MIN GOLD (KNOOP HARDNESS 130-200) OVER COPPER
5	.00005 MIN GOLD (KNOOP HARDNESS 130-200) OVER NICKEL.
E	.00005 MIN GOLD (KNOOP HARDNESS 90 MAX ) OVER COPPER
F	.00005 MIN GOLD (KNOOP HARDNESS 130-200) OVER COPPER.
H	.00010 MIN GOLD (KNOOP HARDNESS 130-200) OVER COPPER
J	.00003 MIN GOLD (KNOOP HARDNESS 130-200) OVER NICKEL

9. TORQUE ON NUT SIZE 4 SHALL BE 40 TO 44 INCH OUNCES.

8. 21-33060-10() IS NOT INTERCHANGEABLE WITH 21-33060-11() OR 21-33060-12().

7. 21-33060-11() AND 21-33060-12() ARE INTERCHANGEABLE AND MAY BE USED FOR 50 OHM IMPEDANCE MATCHED APPLICATIONS.

6.

5. CONTACT ASSEMBLIES WILL ACCOMMODATE OTHER EQUIVALENT COAXIAL CABLES.

4. WHEN ASSEMBLING THIS CONTACT TO CABLE, CRIMP INDICATED FERRULE WITH TOOL INDICATED IN COLUMN OR EQUIVALENT. FOR COMPLETE INSTALLATION INFORMATION, SEE INSTRUCTIONS L-650.

NOTES

SIZE	CODE IDENT NO.	21-33060	
C	77820		
SCALE	WT	REF	SHEET 2

REV SYM	A1	A2	A3	A4	B								
---------	----	----	----	----	---	--	--	--	--	--	--	--	--

21-33060

TAB.