

REV. A		SHEET 1 OF 1		21-33101-39	
REVISIONS					
LTR	DESCRIPTION			DATE	
A	INITIAL RELEASE				

21-33101-39

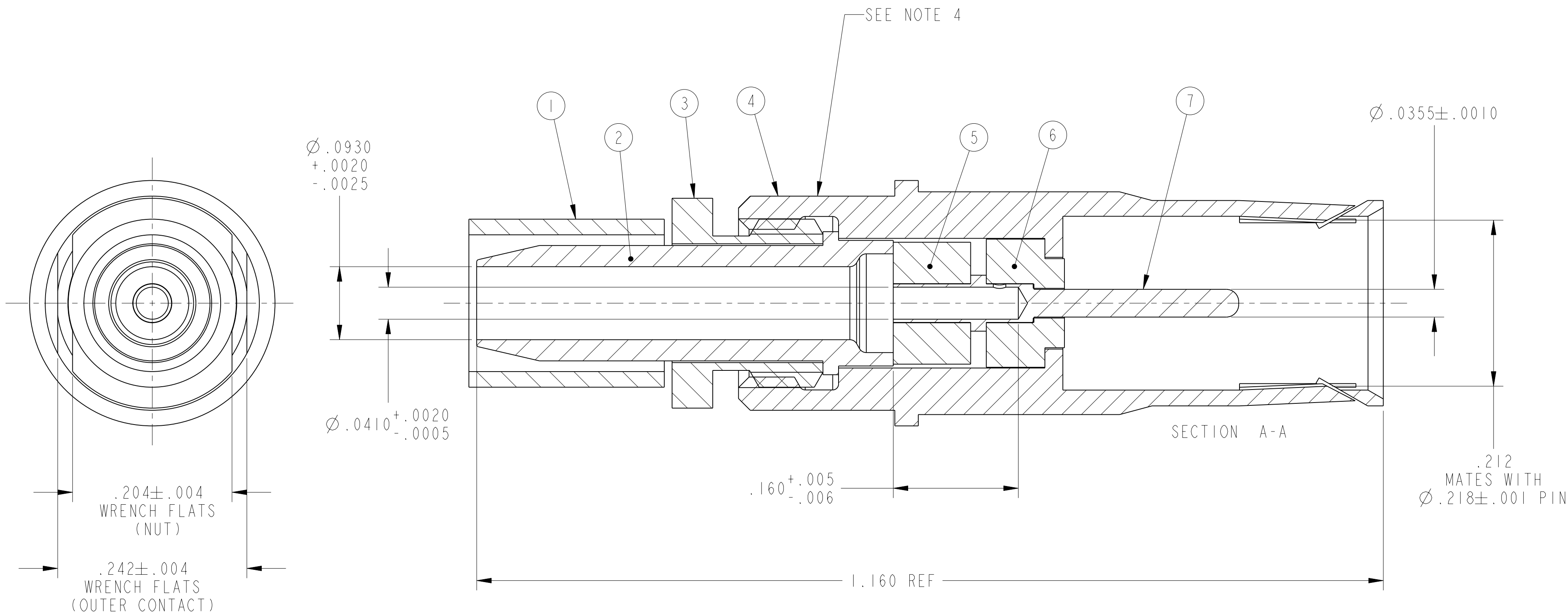
SHEET 1 OF 1

REV. A

C

B

A



6. USE THE 10-452952 PIGGYBACK GROMMET SEAL SUPPLIED WITH THE ELECTRICAL CONNECTOR ASSEMBLY.
5. FOR USE WITH COAX CABLE 5022A1311-0.
4. BLACK INK STAMP TRADEMARK PER 9-6700, TYPE IV, PER 9-7530 OR 9-3856-5 IN APPROX POSITION SHOWN ON THE OUTER CONTACT. TRADEMARK DIRECTION OPTIONAL AND MAY BE SOLID.
3. INDICATED ITEM NOT ILLUSTRATED.
2. DRAWING ILLUSTRATES FINAL ASSEMBLY. COMPLETE INSTALLATION INSTRUCTIONS, (F/N 8), ARE PACKAGED WITH EACH ASSEMBLY. PACKAGE PER PRODUCTION PROCESS SHEET.
1. PROCESS SPEC:
TEST 9-5272-24, 9-6700, 9-7530, 9-3856-5.

NOTES:

THE USE OF THIS DOCUMENT IS UNLIMITED. HOWEVER, DOCUMENTS REFERENCED HEREON MAY CONTAIN LIMITED RIGHTS DATA.

RELEASED / Aug. 20 2003, 02:04 PM

N/A	PRO/ENGINEER INFORMATION
N/A	Pro/e Model Used: TV.85.COAX-39.ASSEM
NEXT ASSEMBLY	Drawing Name: 21-33101-39

UNLESS OTHERWISE SPECIFIED

LINEAR DIMENSIONS ARE IN INCHES
TOLERANCES:
.XXXX = ±.0005 ANGLES = ±2°
.XXX = ±.010
.XX = ±.03
.X = ±.1

DIM. & TOL. PER ASME Y14.5M;
DRM PER MIL-DTL-31000;
OTHER Amphenol Sids. PER 9-3800

LEGENDS:
= FLAG NOTE CALL OUT REFERENCE ONLY

SPECIFICATIONS

MATERIAL SPEC.
N/A

PROCESS SPEC.
SEE NOTE 1

POS	QTY	PART NUMBER	DESCRIPTION	NOTE
8	1	L-1107-AB	INSTALLATION INSTRUCTIONS	2,3
7	1	21-357-55	INNER CONTACT	
6	1	21-1305-35	FRONT INSULATOR	
5	1	21-1312-20	BACK INSULATOR	
4	1	21-459-85	OUTER CONTACT	4
3	1	21-1552-85	NUT	
2	1	21-33148-1	RETAINER	
1	1	10-92703-205	FERRULE	

APPROVALS		DATE
PREPARED BY	LRATCHFORD	08-Aug-03
ENGINEER IN CHARGE	LRATCHFORD	
DESIGN MANAGER	ADAVIS	
DESIGN ACTIVITY GROUP	MIL AERO	
THIRD ANGLE PROJECTION		

PARTS LIST

AMPHENOL CORPORATION
40-60 DELAWARE AVENUE
SIDNEY, N.Y. 13838

**CONTACT, SOCKET, COAXIAL, SIZE 8,
ELECTRICAL CONNECTOR,
TYPE LJT-RE**

SIZE C	CAGE CODE 77820	DOCUMENT NO. 21-33101-39	REV. A
SCALE: 10.0 REF:		21-33101	SHEET 1 OF 1

D

C

A

SHEET 1 OF 1

21-33101-39

A

U

FORMAT: C-U-L-R-V-B