

REV. A		SHEET 1 OF 1		21-33101-41	
REVISIONS					
LTR	DESCRIPTION			DATE	
A	INITIAL RELEASE				

21-33101-41

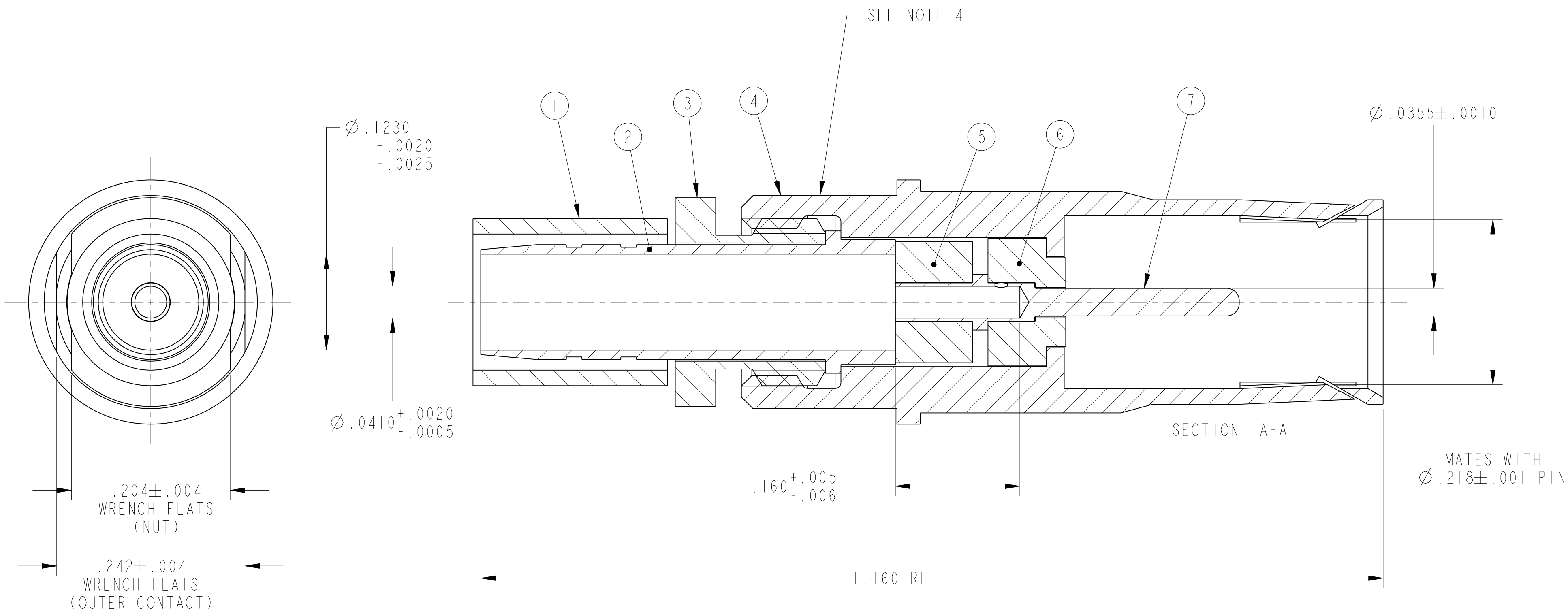
SHEET 1 OF 1

REV. A

C

B

A



- 6. MEETS THE APPLICABLE DIMENSIONAL AND PERFORMANCE REQUIREMENTS OF M39029/59.
- 5. FOR USE WITH COAX CABLE TFLEX-402 OR EQUIVALENT.
- 4. BLACK INK STAMP TRADEMARK PER 9-6700, TYPE IV, PER 9-7530 OR 9-3856-5 IN APPROX POSITION SHOWN ON THE OUTER CONTACT. TRADEMARK DIRECTION OPTIONAL AND MAY BE SOLID.
- 3. INDICATED ITEM NOT ILLUSTRATED.
- 2. DRAWING ILLUSTRATES FINAL ASSEMBLY. COMPLETE INSTALLATION INSTRUCTIONS, (F/N 8), ARE PACKAGED WITH EACH ASSEMBLY. PACKAGE PER PRODUCTION PROCESS SHEET.
- 1. PROCESS SPEC:  
TEST 9-5272-24, 9-6700, 9-7530, 9-3856-5.

NOTES:

THE USE OF THIS DOCUMENT IS UNLIMITED. HOWEVER, DOCUMENTS REFERENCED HEREON MAY CONTAIN LIMITED RIGHTS DATA.

RELEASED / Aug. 10 2004, 10:39 AM

N/A	PRO/ENGINEER INFORMATION
N/A	Pro/e Model Used: 21-33101-29.ASSEM
NEXT ASSEMBLY	Drawing Name: 21-33101-41

UNLESS OTHERWISE SPECIFIED

LINEAR DIMENSIONS ARE IN INCHES  
TOLERANCES:  
.XXXX = ±.0005 ANGLES= ±2°  
.XXX = ±.010  
.XX = ±.03  
.X = ±.1

DIM. & TOL. PER ASME Y14.5M;  
DRM PER MIL-DTL-31000;  
OTHER Amphenol Sids. PER 9-3800

LEGENDS:  
= FLAG NOTE CALL OUT REFERENCE ONLY

SPECIFICATIONS

MATERIAL SPEC.  
N/A

PROCESS SPEC.  
SEE NOTE 1

POS	QTY	PART NUMBER	DESCRIPTION	NOTE
9	1	21-33321-10	PIGGYBACK GROMMET SEAL	3
8	1	L-1107-AF	INSTALLATION INSTRUCTIONS	2,3
7	1	21-357-55	INNER CONTACT	
6	1	21-1305-35	FRONT INSULATOR	
5	1	21-1312-20	BACK INSULATOR	
4	1	21-459-85	OUTER CONTACT	4
3	1	21-1552-85	NUT	
2	1	21-261-65	RETAINER	
1	1	10-92703-205	FERRULE	

APPROVALS		DATE
PREPARED BY RATCHFORD		
ENGINEER IN CHARGE RATCHFORD		11-Jun-04
DESIGN MANAGER A. DAVIS		
DESIGN ACTIVITY GROUP MIL-AERO		
THIRD ANGLE PROJECTION		

PARTS LIST

**AMPHENOL CORPORATION**  
40-60 DELAWARE AVENUE  
SIDNEY, N.Y. 13858

**CONTACT, SOCKET, COAXIAL, SIZE 8,  
ELECTRICAL CONNECTOR,  
TYPE LJT-RE**

SIZE <b>C</b>	CAGE CODE <b>77820</b>	DOCUMENT NO. <b>21-33101-41</b>	REV. <b>A</b>
------------------	---------------------------	------------------------------------	------------------

SCALE: 10.0 REF: 21-33101-29 SHEET 1 OF 1

SHEET 1 OF 1

21-33101-41

A

FORMAT: C-U-L-R-V-B