

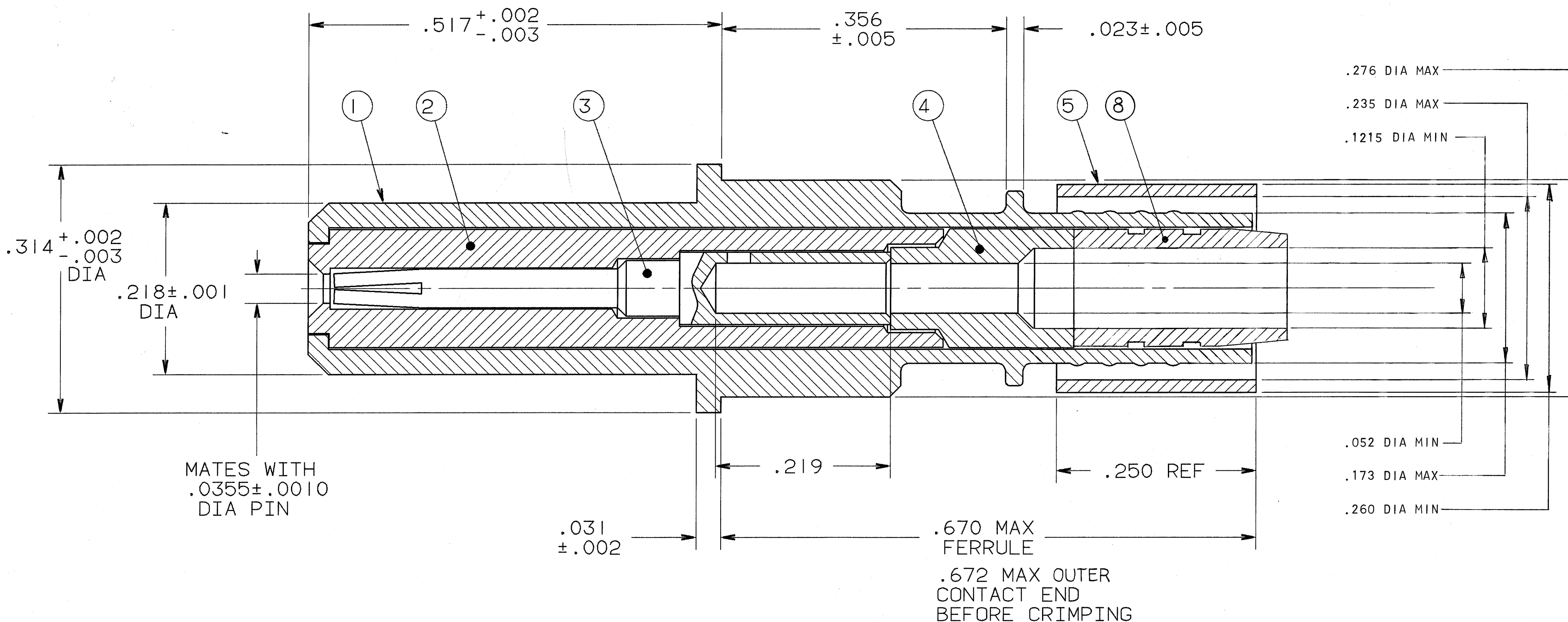
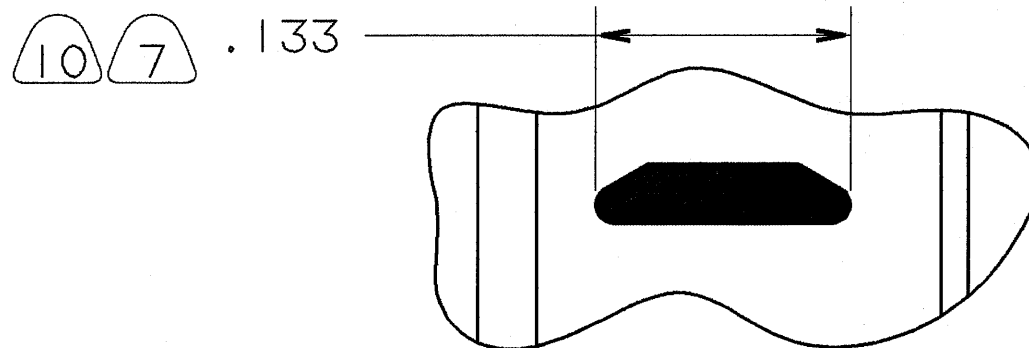
4

3

2

1

REVISIONS				
ZONE	LTR	DESCRIPTION	DATE	APPROVED
	A	INITIAL RELEASE NUM: 70091-174		



MATES WITH
.0355 ± .0010
DIA PIN

FIND NO.	QTY REQD.	FSCM NO.	PART NUMBER	DESCRIPTION	NOTE REF.
8	1		21-261-105	RETAINER	
7	1		21-33790-1	INSTALLATION INSTRUCTIONS	4,5
6	1		21-33321-9	PIGGYBACK GROMMET SEAL	
5	1		10-92703-345	FERRULE, CRIMP	
4	1		21-33797-2	INSULATOR, REAR	
3	1		21-33799-15	CONTACT, INNER SOCKET	
2	1		21-33796-1	INSULATOR, FRONT	
1	1		21-33730-25	CONTACT, PIN	

UNLESS OTHERWISE SPECIFIED
LINEAR DIMENSIONS ARE IN
INCHES.
TOLERANCES: .XXX ± .010,
.XX ± .03, .X ± .1,
ANGLES ± 2°.
OTHER STANDARDS PER 9-3800
AND DOD-D-1000.
NOTE REF. = **XX**

COMPANY ID: 9
CODED/MS/CUST: N
INTERNAL: N
LOTNO: N
DATE CODE: N
SEE PRINT: N

N/A
N/A
NEXT ASSEMBLY

SPECIFICATIONS		SIGNATURES		DATES		PARTS LIST	
MATERIAL SPEC. N/A		<i>J. Prescott</i>		5/24/91		AMPHENOL CORPORATION BENDIX CONNECTOR OPERATIONS SIDNEY, N.Y.	
PROCESS SPEC. SEE NOTE 6		<i>J. Hatchford</i>		4/14/91		CONTACT, PIN, SIZE 8, TYPE LJT-R AND TV-R, CRIMP TERMINATION STYLE, COAXIAL CONTACT	
		<i>B. Downsi</i>		2/11/91		SCALE 10/1	
		<i>J. Hatchford</i>		4/14/91		WT.	
		<i>W. Davis</i>		6-11-91		FSCM NO. 77820	
		21-033102-027				REF 21-33102-27	
						SHEET 1 OF 2	

SEE SHEET 2.

NOTES:

THE USE OF THIS DOCUMENT IS UNLIMITED.
HOWEVER, DOCUMENTS REFERENCED HEREON
MAY CONTAIN LIMITED RIGHTS DATA.

COMPUTER GENERATED DRAWING

N/A

02083

21-33792-15

N/A

21-33102-27

B

A

4

3

2

1

D

D

C

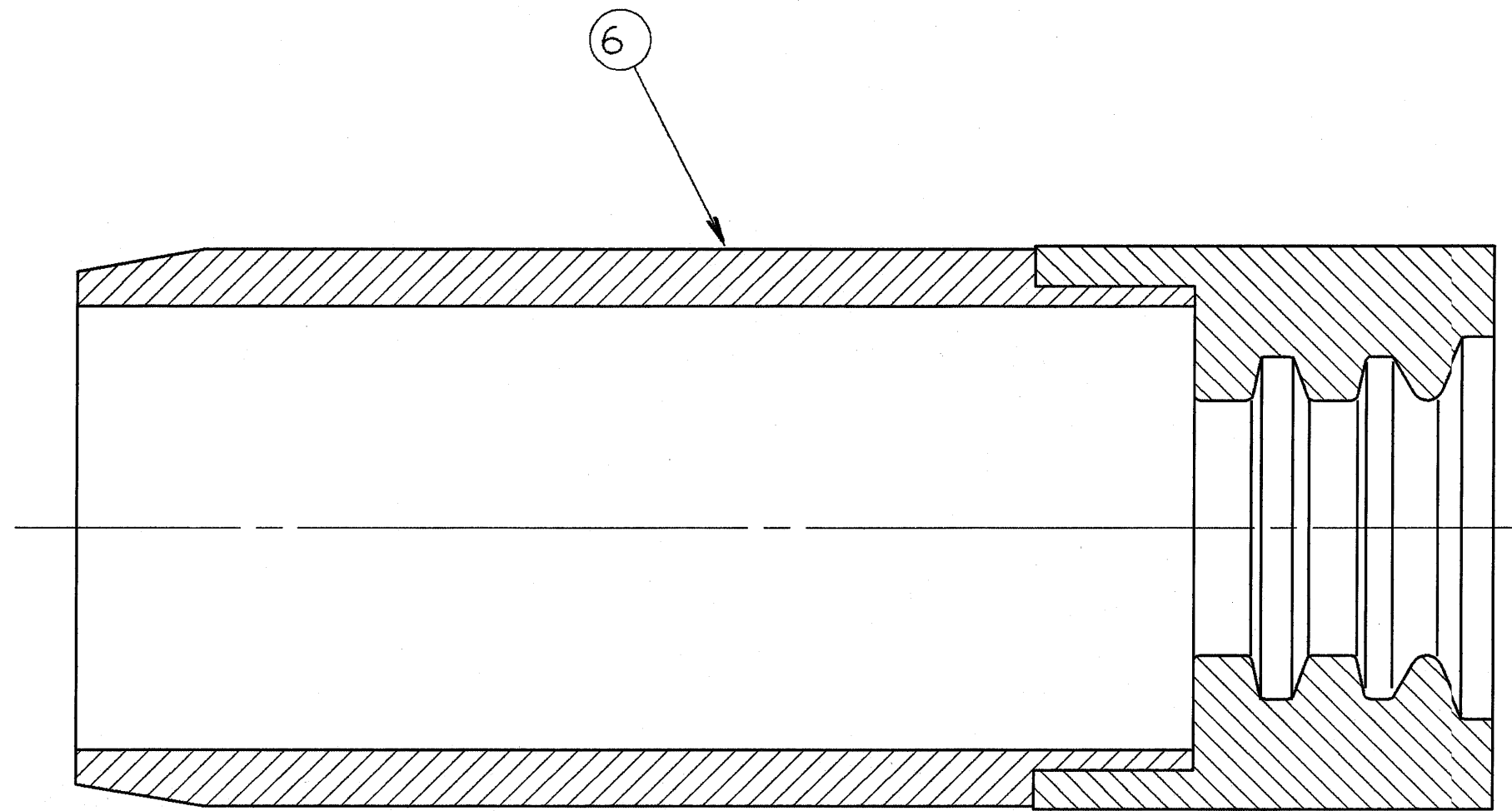
C

B

B

A

A



VIEW OF PIGGYBACK GROMMET SEAL

- 10. OPTIONAL METHOD:
TRADEMARK MAY BE METAL STAMPED
AT COMPONENT LEVEL.
- 9. CONTACT ACCOMMODATES COAXIAL
CABLE M17/128-RG400 OR EQUIVALENT
- 8. THIS PIN CONTACT ASSEMBLY IS NOT
IMPEDANCE MATCHED.
- 7. BLACK INK STAMP TRADEMARK PER 9-6700. TYPE IV PER
9-3856-5 IN APPROX POSITION SHOWN ON OUTER
CONTACT. TRADEMARK DIRECTION OPTIONAL AND MAY BE
SOLID AS SHOWN. SEE NOTE 10.
- 6. PROCESS SPEC:
TEST 9-5272-24;
9-6700, 9-3856-5
- 5. FIND NUMBER 7 IS NOT ILLUSTRATED. SEE NOTE 4.
- 4. DRAWING ILLUSTRATES FINAL ASSEMBLY. COMPLETE
INSTALLATION INSTRUCTIONS, (F/N 7), ARE PACKAGED
WITH EACH ASSEMBLY. PACKAGE PER PRODUCTION
PROCESS SHEET.
- 3. FINISH: (CONTACTS AND FERRULE)
GOLD PLATE (.000050/.000070 THICK)
OVER NICKEL.
- 2. MATES WITH ANY SOCKET COAXIAL CONTACT ASSEMBLY IN
PART NUMBER SERIES 21-33101 OR SOCKET COAXIAL
CONTACT 21-33791-15.
- 1. CONTACT SHALL MEET THE APPLICABLE REQUIREMENTS OF
MIL-C-39029/60 REF.

NOTES:

THE USE OF THIS DOCUMENT IS UNLIMITED. HOWEVER, DOCUMENTS REFERENCED
HEREON MAY CONTAIN LIMITED RIGHTS DATA.

SIZE	FSCM NO.	REV.
C	77820	A
SCALE	WT.	REF
NONE		N/A
SHEET	2	

21-33102-27