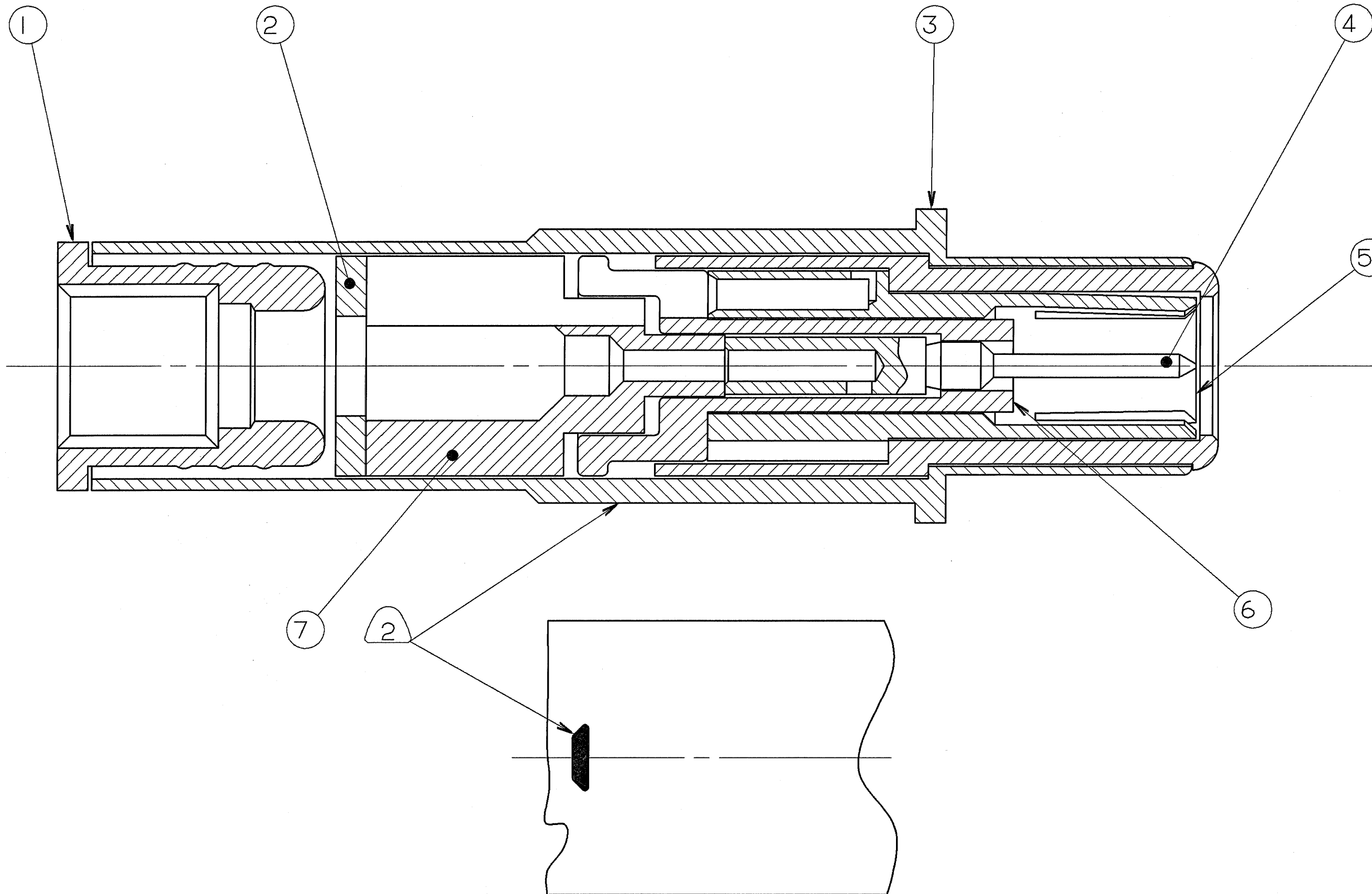


| REVISIONS | | | | |
|-----------|-----|-----------------------------------------|---------------------|-------------------------|
| ZONE | LTR | DESCRIPTION | DATE | APPROVED |
| — | C | (CLII)SEE CHANGE NOTICE ECN: 78168-1 | 4/9/87 CODINGTON | <i>[Signature]</i> P |



6. MEETS THE REQUIREMENTS OF M39029/90-529, EXCEPT FOR THE HEAT SHRINK BOOT REQUIREMENTS. AND LESS COLOR BANDS.
5. INDICATED ITEM NOT ILLUSTRATED.
4. CONTACT WILL ACCOMODATE MI7/176-00002 CABLE.
3. DRAWING ILLUSTRATES FINAL ASSEMBLY. COMPLETE INSTALLATION INSTRUCTIONS F/N 9, PACKED WITH EACH ASSEMBLY. PACKAGE PER PRODUCTION PROCESS SHEET.
2. BLACK INK STAMP TRADEMARK 9-6700 TYPE IV. PER 9-7530 OR 9-3856-5. IN APPROXIMATE POSITION SHOWN. DIRECTION OPTIONAL. TRADEMARK MAY BE SOLID AS SHOWN.
1. PROCESS SPEC:
TEST 9-5272-30
9-6700, 9-7530, 9-3856-5

NOTES:

THE USE OF THIS DOCUMENT IS UNLIMITED. HOWEVER, DOCUMENTS REFERENCED HEREON MAY CONTAIN LIMITED RIGHTS DATA.

GENERAL USE
NEXT ASSEMBLY

UNLESS OTHERWISE SPECIFIED
LINEAR DIMENSIONS ARE IN
INCHES.
TOLERANCES: .XXX±.010,
.XX ±.03, .X ±.1,
ANGLES ±2°.
OTHER STANDARDS PER 9-3800
AND DOD-D-1000.
NOTE REF. =

| FIND NO. | QTY REQD. | FSCM NO. | PART NUMBER | DESCRIPTION | NOTE REF. |
|----------|-----------|----------|-------------|---------------------------|-----------|
| 8 | 1 | | 21-33320 | INSTALLATION INSTRUCTIONS | 5 |
| 7 | 1 | | 21-33305-1 | INSULATOR | |
| 6 | 1 | | 21-33309-1 | INSULATOR | |
| 5 | 1 | | 21-33313-15 | CONTACT | |
| 4 | 1 | | 21-33316-15 | CONTACT | |
| 3 | 1 | | 21-33312-25 | CONTACT | |
| 2 | 1 | | 21-33304-1 | SPACER | |
| 1 | 1 | | 21-33303-15 | BUSHING | |

| PARTS LIST | | | | | |
|-----------------------------|----------------------|---------|---------------------------------------------------------------------|-------------------|-------------------|
| SPECIFICATIONS | SIGNATURES | DATES | AMPHENOL CORPORATION BENDIX CONNECTOR OPERATIONS SIDNEY, N.Y. | | |
| MATERIAL SPEC. N/A | PREPARED HEMMER | 4/19/84 | CONTACT, PIN, CONCENTRIC TWINAX, SIZE 8 | | |
| | CHECKED DAVIS | 5/30/84 | | | |
| | MATERIAL WILLIAMS | 5/31/84 | | | |
| | APPROVED HEMMER | 5/30/84 | | | |
| PROCESS SPEC. SEE NOTE 1 | APPROVED DAVIS | 5/30/84 | SIZE C | FSCM NO. 77820 | REF. 21-33190 |
| | 1ST PART NO. | | SCALE 10/1 | WT. | REF. 21-33190-529 |
| | | | | | SHEET N/A |