

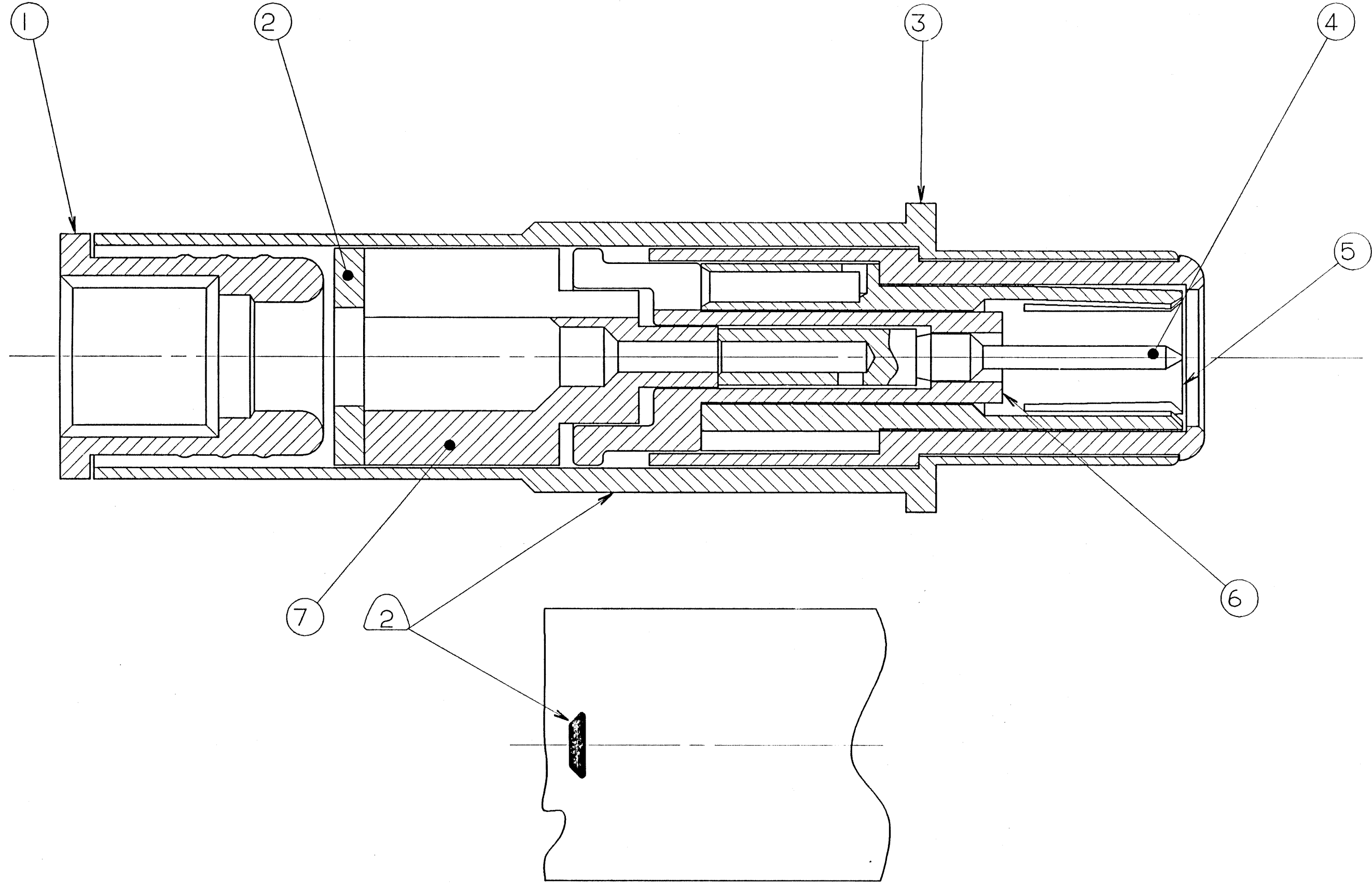
4

3

2

1

REVISIONS				
ZONE	LTR	DESCRIPTION	DATE	APPROVED
	A	INITIAL RELEASE NUMBER: 70095-342		
	B	(LLI) SEE CHG SHEET ECN: 81394	8-6-96	



- 6. MEETS THE REQUIREMENTS OF M39029/90-529, EXCEPT LESS COLOR BANDS
- 5. INDICATED ITEM NOT ILLUSTRATED.
- 4. CONTACT WILL ACCOMODATE RAYCHEM 7726D0664 CABLE.
- 3. DRAWING ILLUSTRATES FINAL ASSEMBLY. COMPLETE INSTALLATION INSTRUCTIONS F/N 9, PACKED WITH EACH ASSEMBLY. PACKAGE PER PRODUCTION PROCESS SHEET.
- 2. BLACK INK STAMP TRADEMARK 9-6700 TYPE IV. PER 9-7530 OR 9-3856-5. IN APPROXIMATE POSITION SHOWN. TRADEMARK MAY BE SOLID AS SHOWN.

- 1. PROCESS SPEC:
TEST 9-5272-30
9-6700, 9-7530, 9-3856-5

NOTES:

THE USE OF THIS DOCUMENT IS UNLIMITED. HOWEVER, DOCUMENTS REFERENCED HEREON MAY CONTAIN LIMITED RIGHTS DATA.

GENERAL USE
NEXT ASSEMBLY

UNLESS OTHERWISE SPECIFIED LINEAR DIMENSIONS ARE IN INCHES.
TOLERANCES: .XXX±.010,
.XX ±.03, .X ±.1,
ANGLES ±2°.
OTHER STANDARDS PER 9-3800 AND DOD-D-1000.
NOTE REF. =

FIND NO.	QTY REQD.	FSCM NO.	PART NUMBER	DESCRIPTION	NOTE REF.
9	1		21-33310-1	SLEEVE SEAL	5
8	1		21-33320-40	INSTALLATION INSTRUCTIONS	5
7	1		21-33305-1	INSULATOR	
6	1		21-33309-1	INSULATOR	
5	1		21-33313-15	CONTACT	
4	1		21-33316-15	CONTACT	
3	1		21-33312-25	CONTACT	
2	1		21-33304-1	SPACER	
1	1		21-33303-785	BUSHING	

PARTS LIST			
SPECIFICATIONS	SIGNATURES	DATES	DESCRIPTION
MATERIAL SPEC. N/A	PREPARED RATCHFORD CHECKED MATERIAL	9/18/95 9-18-95	CONTACT, PIN, CONCENTRIC TWINAX, SIZE 8
PROCESS SPEC. SEE NOTE 1	APPROVED APPROVED		
	SIZE C	FSCM NO. 77820	21-33190-40
	SCALE 10/1	WT.	REF 21-33190-529 SHEET N/A

21-33190-40

B

A