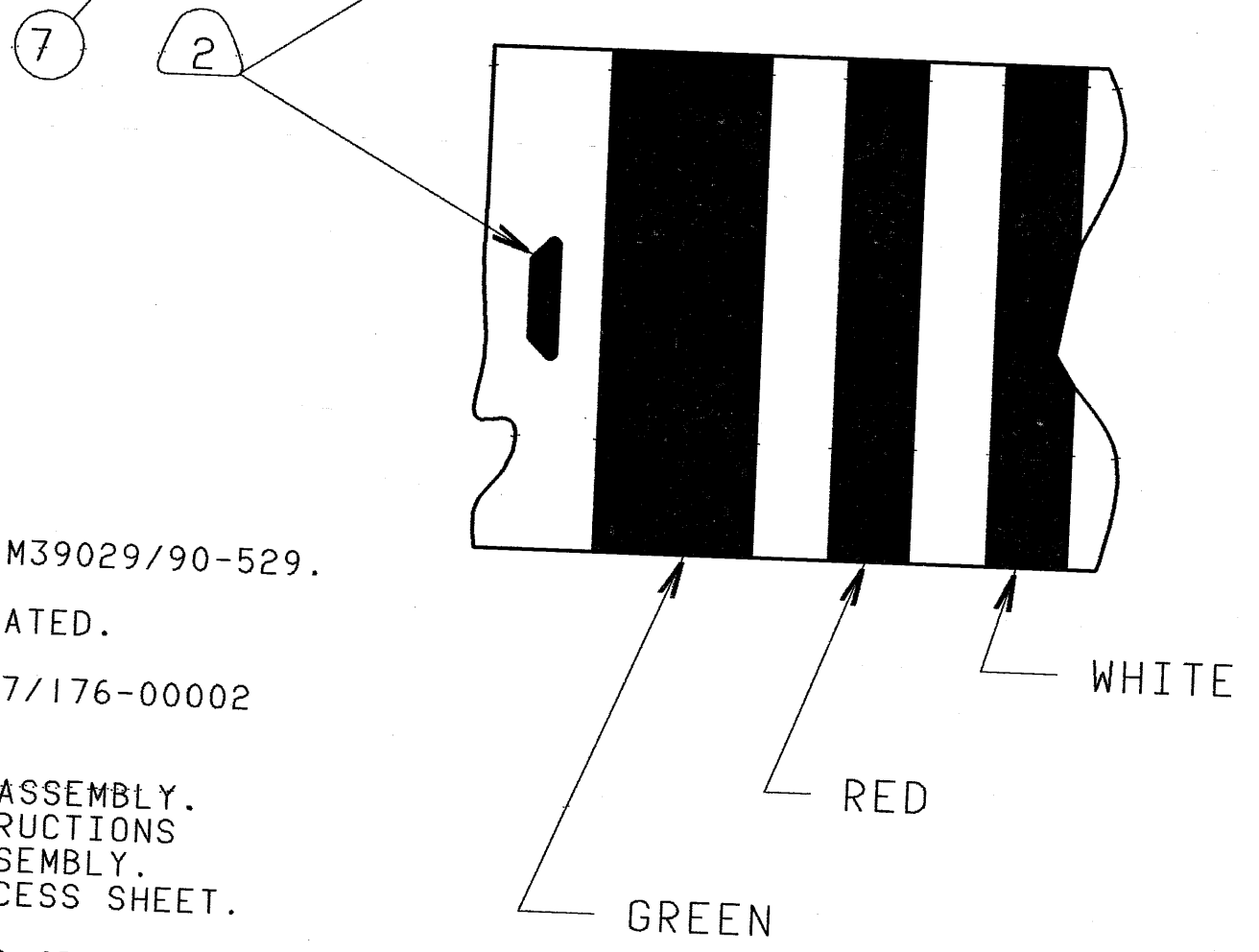
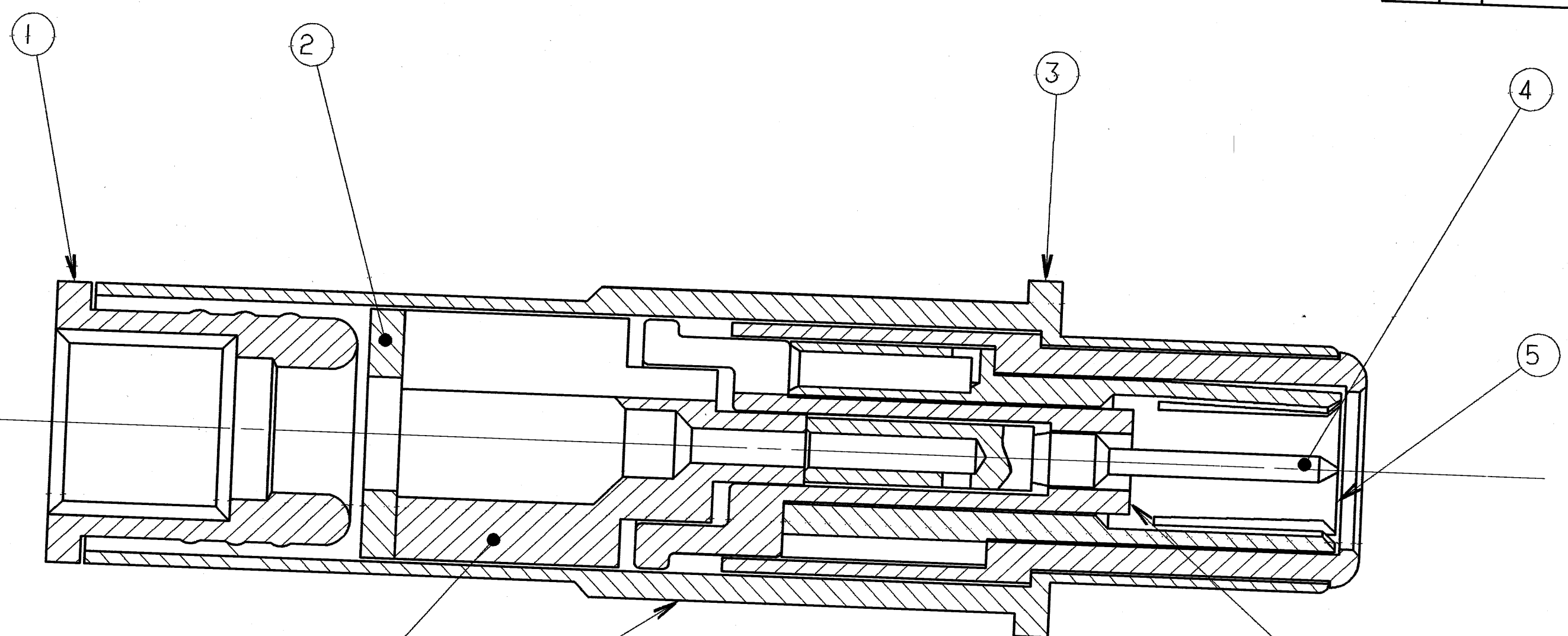


74500-178		REVISIONS		
ZONE	LTR	DESCRIPTION	DATE	APPROVED
✓	B	(CLII) ADD RELISBILITY, COLOR BANDS REV PARTS LIST, NOTE 3 ECN:CNR	7/18/83 EDWARDS	



6. MEETS THE REQUIREMENTS OF M39029/90-529.
5. INDICATED ITEM NOT ILLUSTRATED.
4. CONTACT WILL ACCOMODATE MI7/176-00002 CABLE.
3. DRAWING ILLUSTRATES FINAL ASSEMBLY. COMPLETE INSTALLATION INSTRUCTIONS F/N 9, PACKED WITH EACH ASSEMBLY. PACKAGE PER PRODUCTION PROCESS SHEET.
2. BLACK INK STAMP TRADEMARK 9-6700 TYPE IV. PER 9-7530, IN APPROXIMATE POSITION SHOWN. TRADEMARK MAY BE SOLID AS SHOWN.
1. PROCESS SPEC:
TEST 9-5272-28

FIND NO.	QTY REQD.	FSCM NO.	PART NUMBER	DESCRIPTION	NOTE REF
9	1		21-33320	INSTALLATION INSTRUCTIONS	5
8	1		21-33310-1	SLEEVE	5
7	1		21-33305-1	INSULATOR	
6	1		21-33309-1	INSULATOR	
5	1		21-33313-15	CONTACT	
4	1		21-33316-15	CONTACT	
3	1		21-33312-15	CONTACT	
2	1		21-33304-1	SPACER	
1	1		21-33303-15	BUSHING	

SPECIAL CONTROL 9-6000-4
PROCESS SHEET CONTROL 9-4796
9-6700, 9-7530

UNLESS OTHERWISE SPECIFIED
LINEAR DIMENSIONS ARE IN INCHES.
TOLERANCES: .XXX±.010, .XX ±.03, .X ±.1, ANGLES ±2°.
OTHER STANDARDS PER 9-3800 AND DOD-D-1000. NOTE REF XX
GENERAL USE
NEXT ASSEMBLY

SPECIFICATIONS		SIGNATURES		DATES	
MATERIAL SPEC.	PREPARED EDWARDS		6/8/83	THE BENDIX CORPORATION ELECTRICAL COMPONENTS DIVISION SIDNEY, NEW YORK 13838	
	CHECKED <i>Rellen</i>		8/30/83	CONTACT, PIN, CONCENTRIC TWINAX SIZE 8	
	APPROVED <i>W. Williams</i>		8-30-83	SIZE	FSCM NO.
PROCESS SPEC. SEE NOTE 1	APPROVED <i>W. Williams</i>		8-26-83	C 77820	21-33190-529
	APPROVED <i>W. Williams</i>		8-26-83	SCALE 10/1	WT. REF L-38185-240

NOTES:

COMPUTER GENERATED DRAWING.

21-33190-529

A

B

105059831

SHEET