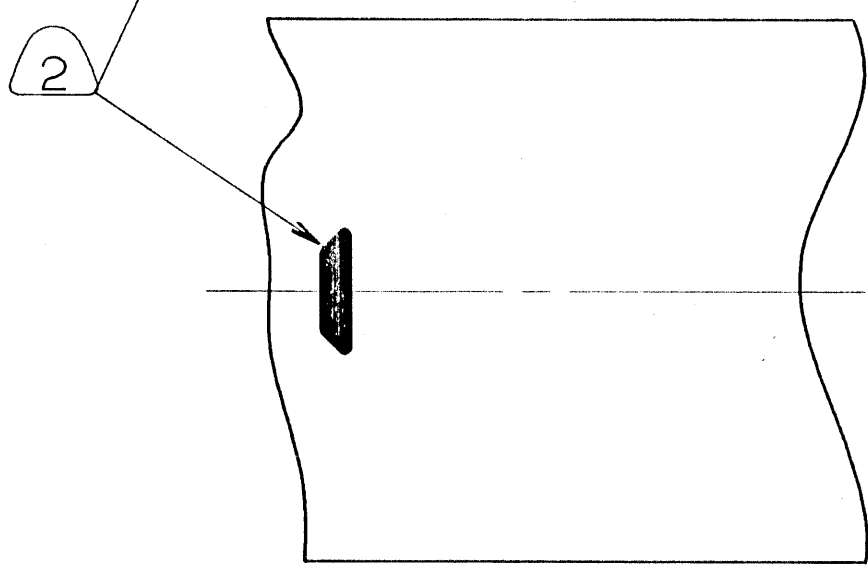
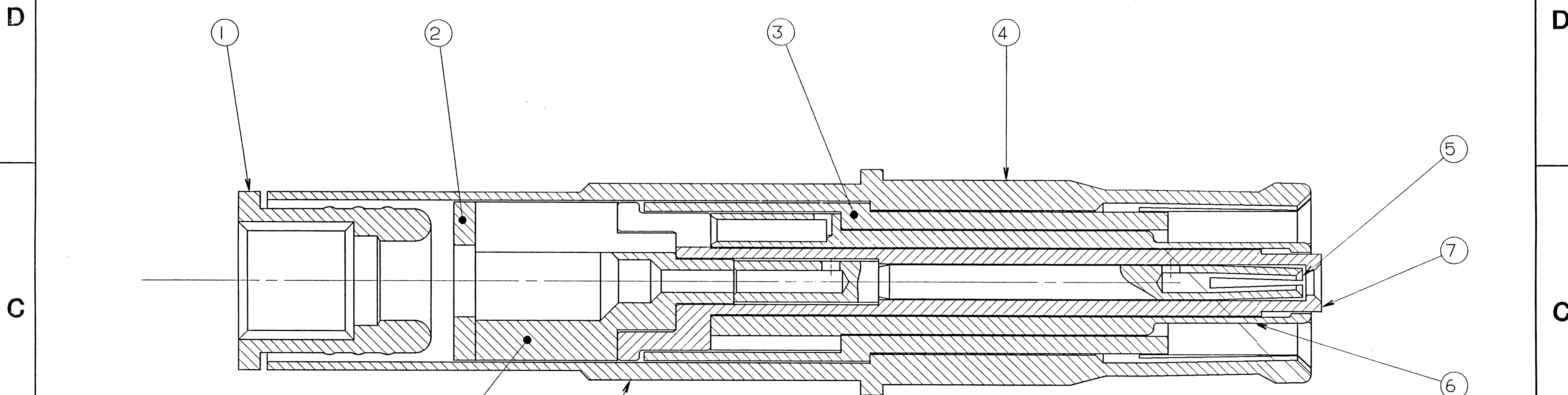


REVISIONS				
ZONE	LTR	DESCRIPTION	DATE	APPROVED
✓	A	INITIAL RELEASE NUMBER: 70095-342		
	B	(CL II) SEE CHG SHEET ECN: 81394	8-6-96	<i>[Signature]</i>



- 6. MEETS THE REQUIREMENTS OF M39029/91-530 EXCEPT LESS COLOR BANDS
- 5. INDICATED ITEM NOT ILLUSTRATED.
- 4. CONTACT WILL ACCOMODATE RAYCHEM 7726D0664 CABLE.
- 3. DRAWING ILLUSTRATES FINAL ASSEMBLY. COMPLETE INSTALLATION INSTRUCTIONS F/N 9, PACKED WITH EACH ASSEMBLY. PACKAGE PER PRODUCTION PROCESS SHEET.
- 2. BLACK INK STAMP TRADEMARK 9-6700 TYPE IV. PER 9-7530 OR 9-3856-5, IN APPROXIMATE POSITION SHOWN. TRADEMARK MAY BE SOLID AS SHOWN.
- 1. PROCESS SPEC:
TEST 9-5272-30
9-6700, 9-7530, 9-3856-5

NOTES:
THE USE OF THIS DOCUMENT IS UNLIMITED. HOWEVER, DOCUMENTS REFERENCED HEREON MAY CONTAIN LIMITED RIGHTS DATA.

UNLESS OTHERWISE SPECIFIED LINEAR DIMENSIONS ARE IN INCHES.
TOLERANCES: .XXX±.010.
.XX ±.03, .X ±.1.
ANGLES ±2°.
OTHER STANDARDS PER 9-3800 AND DOD-D-1000.
NOTE REF. = *[XX]*

IO	I	QTY RECD.	FSCM NO.	PART NUMBER	DESCRIPTION	NOTE REF.
10	1			21-33310-1	SLEEVE SEAL	5
9	1			21-33319-40	INSTALLATION INSTRUCTIONS	5
8	1			21-33305-1	INSULATOR	
7	1			21-33308-1	INSULATOR	
6	1			21-33314-15	CONTACT	
5	1			21-33315-15	CONTACT	
4	1			21-33311-25	CONTACT	
3	1			21-33307-1	INSULATOR	
2	1			21-33304-1	SPACER	
1	1			21-33303-785	BUSHING	

PARTS LIST						
FIND NO.	QTY RECD.	FSCM NO.	PART NUMBER	DESCRIPTION	NOTE REF.	
SPECIFICATIONS			SIGNATURES	DATES	AMPHENOL CORPORATION	
MATERIAL SPEC. N/A			PREPARED RATCHFORD	9/18/95	BENDIX CONNECTOR OPERATIONS	
			CHECKED <i>[Signature]</i>	9-18-95	SIDNEY, N.Y.	
PROCESS SPEC. SEE NOTE 1			APPROVED <i>[Signature]</i>	9-18-95	CONTACT, SOCKET, CONCENTRIC TWINAX, SIZE 8	
			1ST PART NO.	SIZE C	FSCM NO. 77820	21-33191-40
				SCALE 10/1	WT.	REF. 21-33191-530
					SHEET N/A	REV. B