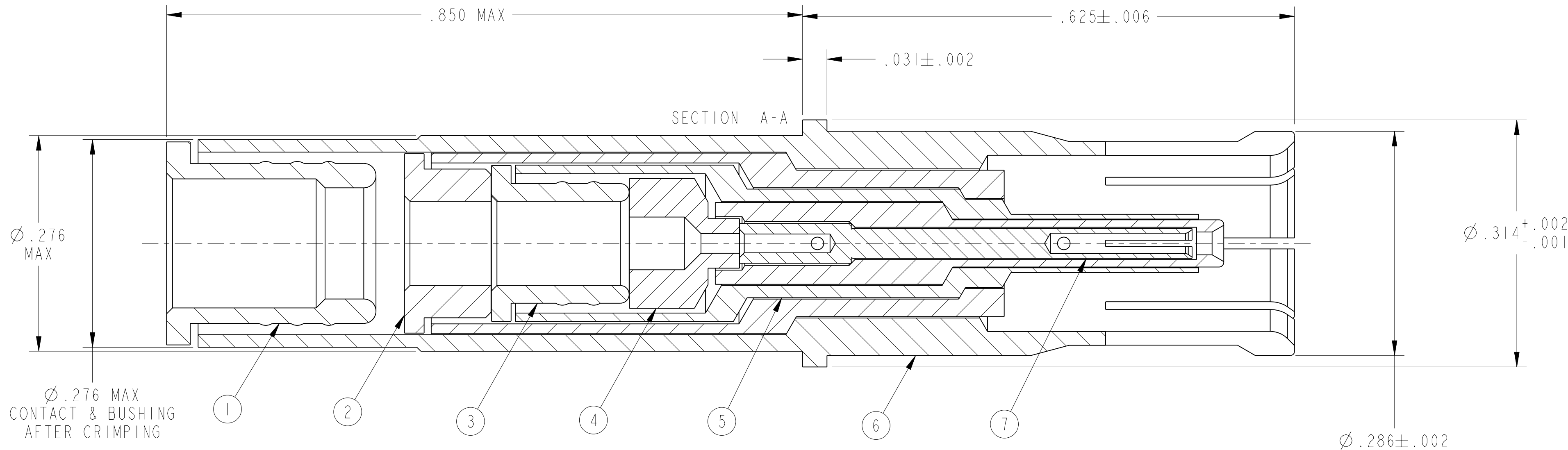
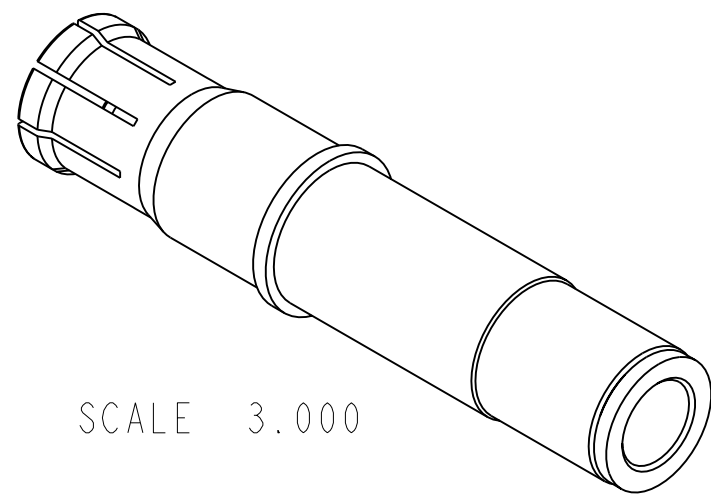
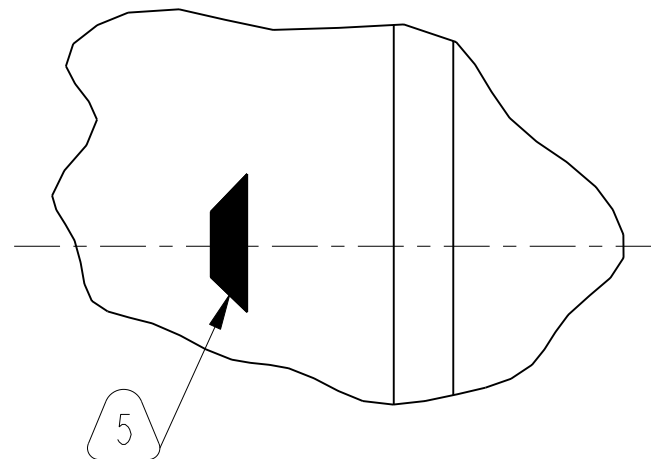


| | | | | | |
|-----------|-----------------|--------------|--|-------------|--|
| REV. A | | SHEET 1 OF 1 | | 21-33197-11 | |
| REVISIONS | | | | | |
| LTR | DESCRIPTION | | | DATE | |
| A | INITIAL RELEASE | | | | |



7. INDICATED ITEM IS NOT ILLUSTRATED.
6. PROCESS SPEC:
TEST 9-5272-29
9-6700, 9-7530, 9-3856-5.
5. BLACK INK STAMP TRADEMARK 9-6700 TYPE IV PER 9-7530 OR 9-3856-5 ON OUTER CONTACT, IF NOT PREVIOUSLY STAMPED. TRADEMARK MAY BE SOLID AND DIRECTION IS OPTIONAL.
4. DRAWING ILLUSTRATES FINAL ASSEMBLY. COMPONENTS ARE SHIPPED UNASSEMBLED. COMPLETE INSTALLATION INSTRUCTIONS ARE PACKAGED WITH EACH ASSEMBLY. PACKAGE PER PRODUCTION PROCESS SHEETS.
3. CONTACT TERMINATES CHEMINAX 7528G6314 TRIAX CABLE OR EQUIVALENT.
2. FINISH ON ALL METAL COMPONENTS:
.000050 MIN GOLD (KNOOP HARDNESS 130-200), OVER NICKEL UNDERPLATE.
1. MATES WITH 21-33198-() TRIAX PIN CONTACTS.



NOTES:
THE USE OF THIS DOCUMENT IS UNLIMITED. HOWEVER, DOCUMENTS REFERENCED HEREON MAY CONTAIN LIMITED RIGHTS DATA.

| | |
|-----|--|
| N/A | PRO/ENGINEER INFORMATION |
| N/A | Pro/e Model Used: 21-33197-11_TV_TRIAX.85.ASSEM |
| | Drawing Name: 21-33197-11_TV_TRIAX.85 |
| | NEXT ASSEMBLY |

UNLESS OTHERWISE SPECIFIED

LINEAR DIMENSIONS ARE IN INCHES
TOLERANCES:
.XXXX = ±.0005 ANGLES= ±2°
.XXX = ±.010
.XX = ±.03
.X = ±.1

DIM. & TOL. PER ASME Y14.5M;
DRM PER MIL-DTL-31000;
OTHER Amphenol Sids. PER 9-3800

LEGENDS:
= FLAG NOTE CALL OUT REFERENCE ONLY

SPECIFICATIONS

MATERIAL SPEC.
N/A

PROCESS SPEC.
SEE NOTE 6

| POS | QTY | PART NUMBER | DESCRIPTION | NOTE |
|-----|-----|--------------|---------------------------|------|
| 9 | 1 | L-1254-T | INSTALLATION INSTRUCTIONS | 4, 7 |
| 8 | 1 | 21-33321-5 | PIGGYBACK GROMMET SEAL | 7 |
| 7 | 1 | 21-33337-55 | INNER CONTACT | |
| 6 | 1 | 21-33335-45 | OUTER CONTACT | |
| 5 | 1 | 21-33334-45 | INTERMEDIATE CONTACT | |
| 4 | 1 | 21-1381-108 | INSULATOR | |
| 3 | 1 | 21-33303-425 | BUSHING | |
| 2 | 1 | 21-1381-104 | INSULATOR | |
| 1 | 1 | 21-33303-815 | BUSHING | |

| | | |
|------------------------|--------------|-----------|
| APPROVALS | | DATE |
| PREPARED BY | J. HEATH | |
| ENGINEER IN CHARGE | L. RATCHFORD | 11-Aug-04 |
| DESIGN MANAGER | A. DAVIS | |
| DESIGN ACTIVITY GROUP | MIL AERO | |
| THIRD ANGLE PROJECTION | | |

| | | | |
|--|---------------------------|------------------------------------|------------------|
| PARTS LIST | | | |
| AMPHENOL CORPORATION 40-60 DELAWARE AVENUE SIDNEY, N.Y. 13838 | | | |
| CONTACT, SOCKET, TRIAXIAL, TYPE LJT-R & TV-R, SIZE 8 | | | |
| SIZE C | CAGE CODE 77820 | DOCUMENT NO. 21-33197-11 | REV. A |
| SCALE: 10.0 REF: 21-33197-3 | | SHEET 1 OF 1 | |

RELEASED / Oct. 04 2004, 04:21 PM