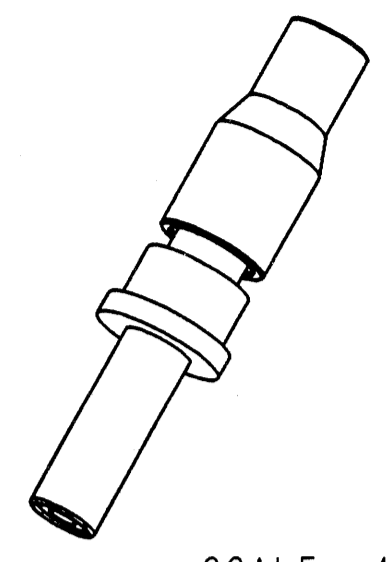
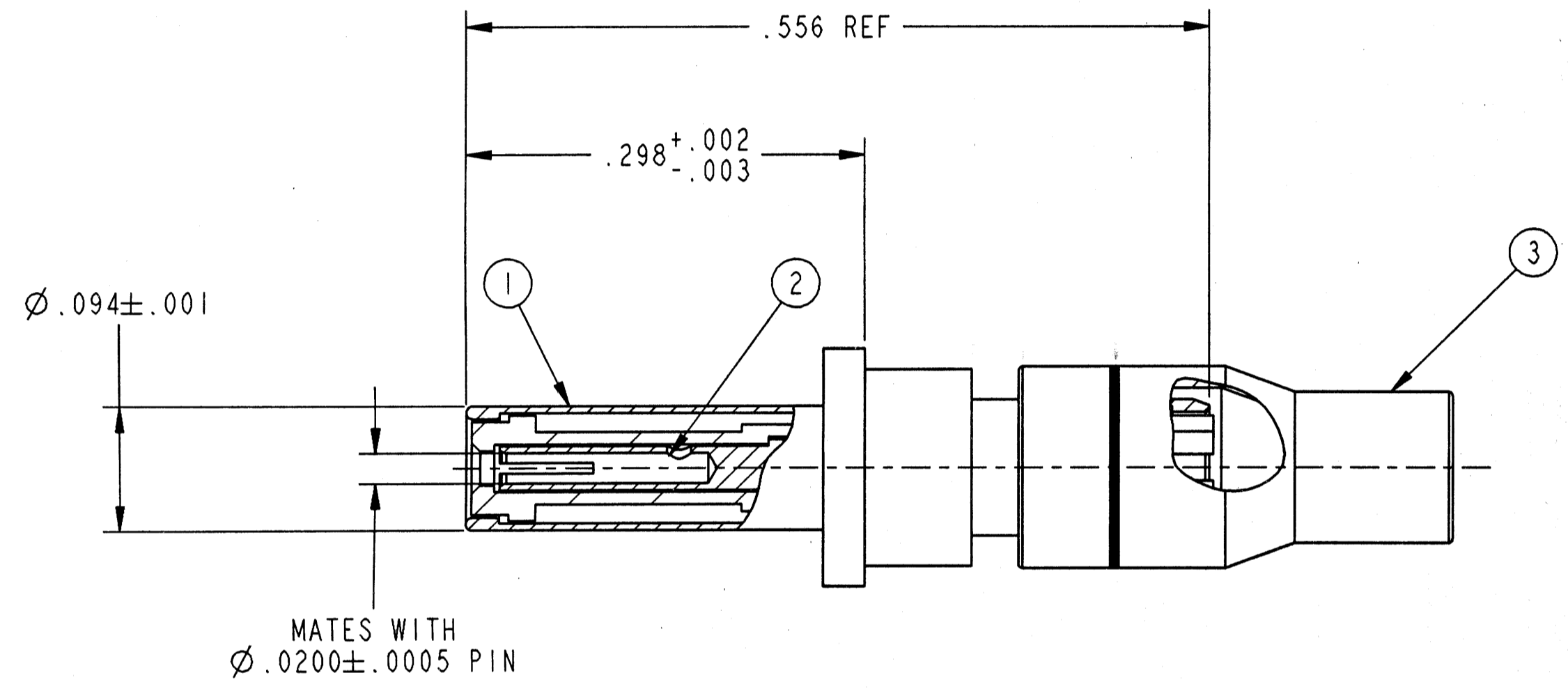


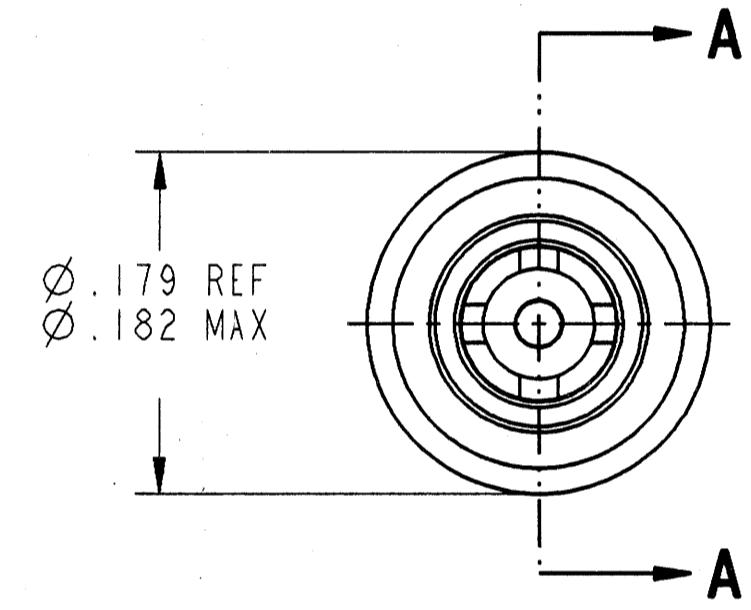
REVISIONS			
LTR	DESCRIPTION	DATE	APPVD
A	INITIAL RELEASE NUM: 70098-441		



SCALE 4



SECTION A-A



4. CONTACT TERMINATES JN1088WT & JN1088WU CABLE.
3. COMPLETE INSTALLATION INSTRUCTIONS PACKAGED WITH EACH ASSEMBLY. PACKAGE PER PRODUCTION PROCESS SHEET.
2. INDICATED COMPONENT NOT ILLUSTRATED.
1. PROCESS SPEC: 9-5272-23

NOTES:

THE USE OF THIS DOCUMENT IS UNLIMITED. HOWEVER, DOCUMENTS REFERENCED HEREON MAY CONTAIN LIMITED RIGHTS DATA.

POS	QTY	PART NUMBER	DESCRIPTION	NOTE
4	1	21-33665-62	INSTALLATION INSTRUCTIONS	2,3
3	1	21-33672-1	OUTER FERRULE	
2	1	21-33665-1M	INNER CONTACT ASSEMBLY	
1	1	21-33213-42M	OUTER CONTACT ASSEMBLY	

UNLESS OTHERWISE SPECIFIED	SPECIFICATIONS	PARTS LIST			
LINEAR DIMENSIONS ARE IN INCHES TOLERANCES: .XXXX = ± .0005 .XXX = ± .010 .XX = ± .03 .X = ± .1 ANGLES = ± 2° OTHER STANDARDS PER 9-3800 AND DOD-D-1000 THIRD ANGLE PROJECTION	MATERIAL SPEC.	APPROVALS		DATE	AMPHENOL CORPORATION <small>BENDIX CONNECTOR OPERATIONS SIDNEY, N.Y.</small> COAX CONTACT ASSEMBLY, SIZE 12, TYPE TV-R
	N/A	PREPARED	G. LARSON	29-JUN-98	
PROCESS SPEC.	SEE NOTE 1	CHECKED	<i>[Signature]</i>	12-3-98	DOCUMENT NO. 21-33213-42 REV. A
		MATERIAL	<i>[Signature]</i>	12-3-98	
		APPROVED	<i>[Signature]</i>	12-3-98	FSCM NO. 77820 SCALE: 10.0 REF: 21-33651-1 SHEET 1 OF 1
		PRO/ENG INFORMATION	21-33213-42 ASSEM 21-33213-42		

FAMCODES DATA3: TBD CICS: TBD

21-33213-42