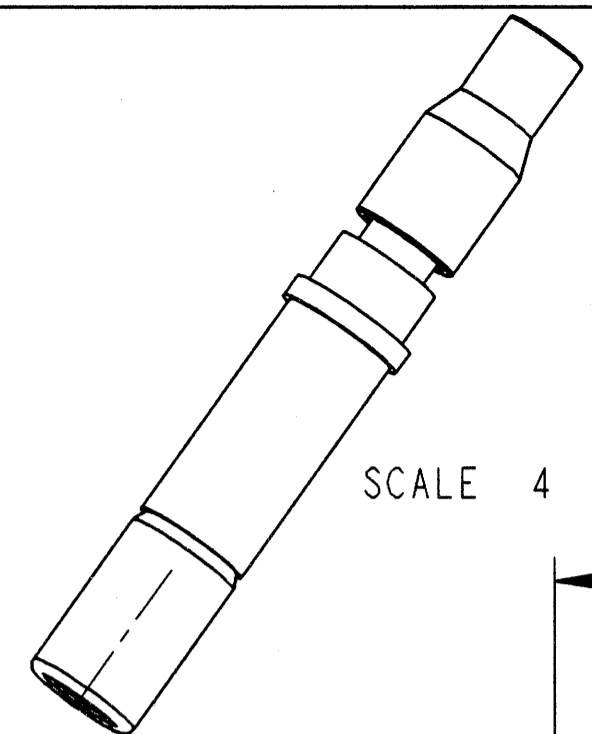
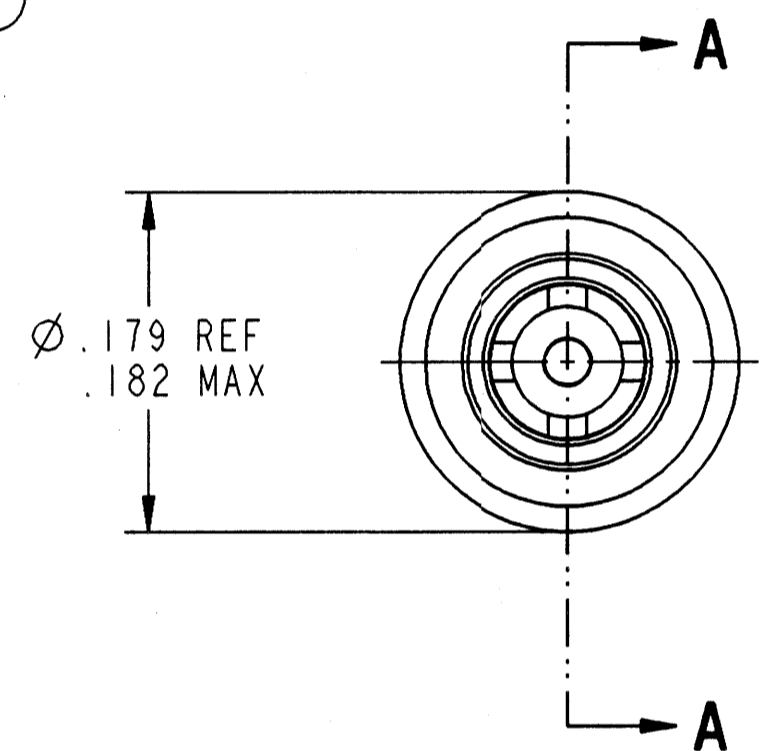
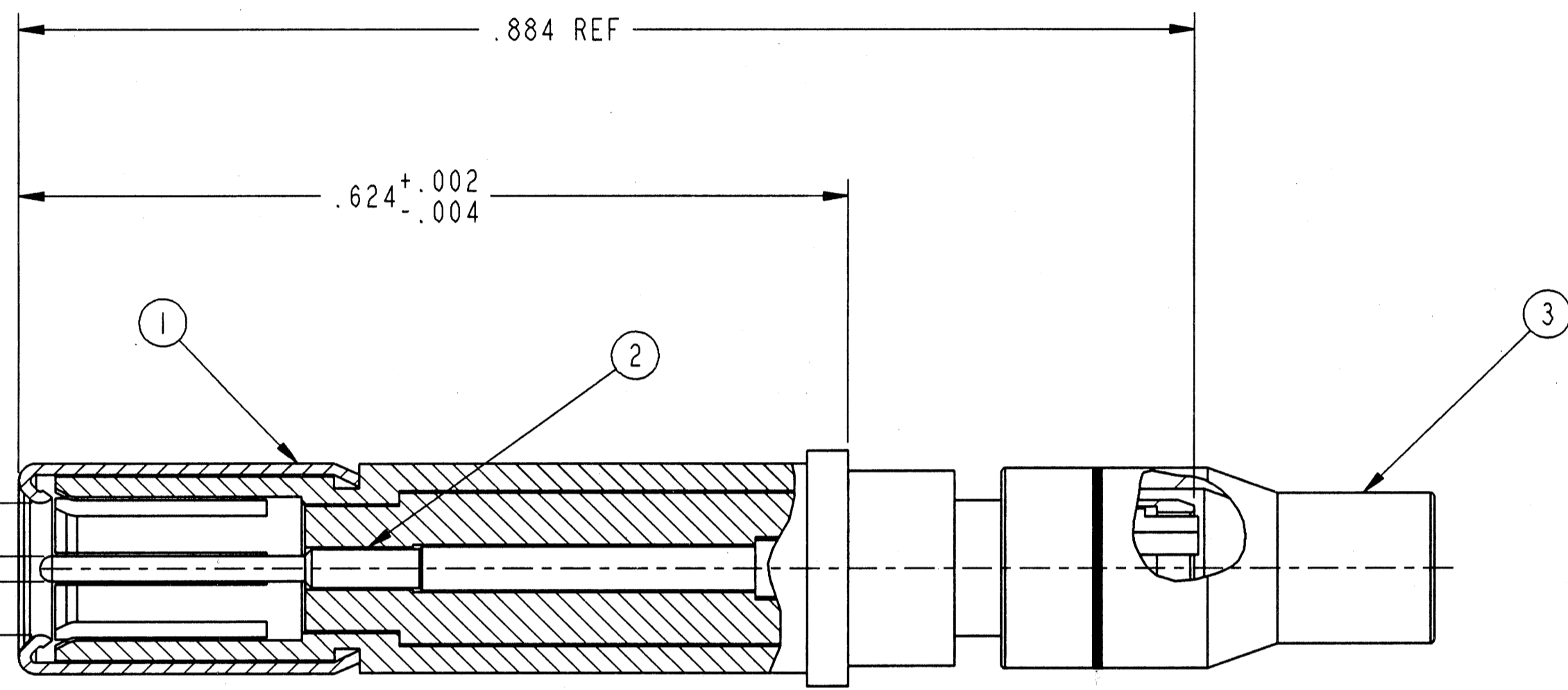


REVISIONS			
LTR	DESCRIPTION	DATE	APPVD
A	INITIAL RELEASE NUM: 70098-441		



SCALE 4



SECTION A-A

- 4. CONTACT TERMINATES JN1088WT & JN1088WU CABLE.
- 3. COMPLETE INSTALLATION INSTRUCTIONS PACKAGED WITH EACH ASSEMBLY PACKAGE PER PRODUCTION PROCESS SHEET.
- 2. INDICATED COMPONENT NOT ILLUSTRATED.
- 1. PROCESS SPEC: 9-5272-23

NOTES:

THE USE OF THIS DOCUMENT IS UNLIMITED. HOWEVER, DOCUMENTS REFERENCED HEREON MAY CONTAIN LIMITED RIGHTS DATA.

POS	QTY	PART NUMBER	DESCRIPTION	NOTE
4	1	21-33665-62	INSTALLATION INSTRUCTIONS	2, 3
3	1	21-33672-1	OUTER FERRULE	
2	1	21-33664-1M	INNER CONTACT ASSEMBLY	
1	1	21-33214-42M	OUTER CONTACT ASSEMBLY	

UNLESS OTHERWISE SPECIFIED	SPECIFICATIONS	PARTS LIST			
	MATERIAL SPEC.	APPROVALS	DATE	AMPHENOL CORPORATION	
	N/A	G. LARSON	29-Jun-98	BENDIX CONNECTOR OPERATIONS SIDNEY, N.Y.	
	PROCESS SPEC.	COAX CONTACT ASSEMBLY, U			
SEE NOTE 1	PRO/ENG INFORMATION	SIZE	FSCM NO.	DOCUMENT NO.	REV.
	21-33214-42.ASSEM	C	77820	21-33214-42	A
	21-33214-42	SCALE: 10.0	REF: 21-33650-1	SHEET 1 OF 1	