

REV. A		SHEET 1 OF 1		DOCUMENT NO. 21-033378-061	
REVISIONS					
LTR	DESCRIPTION			DATE	
A	INITIAL RELEASE				

21-033378-061

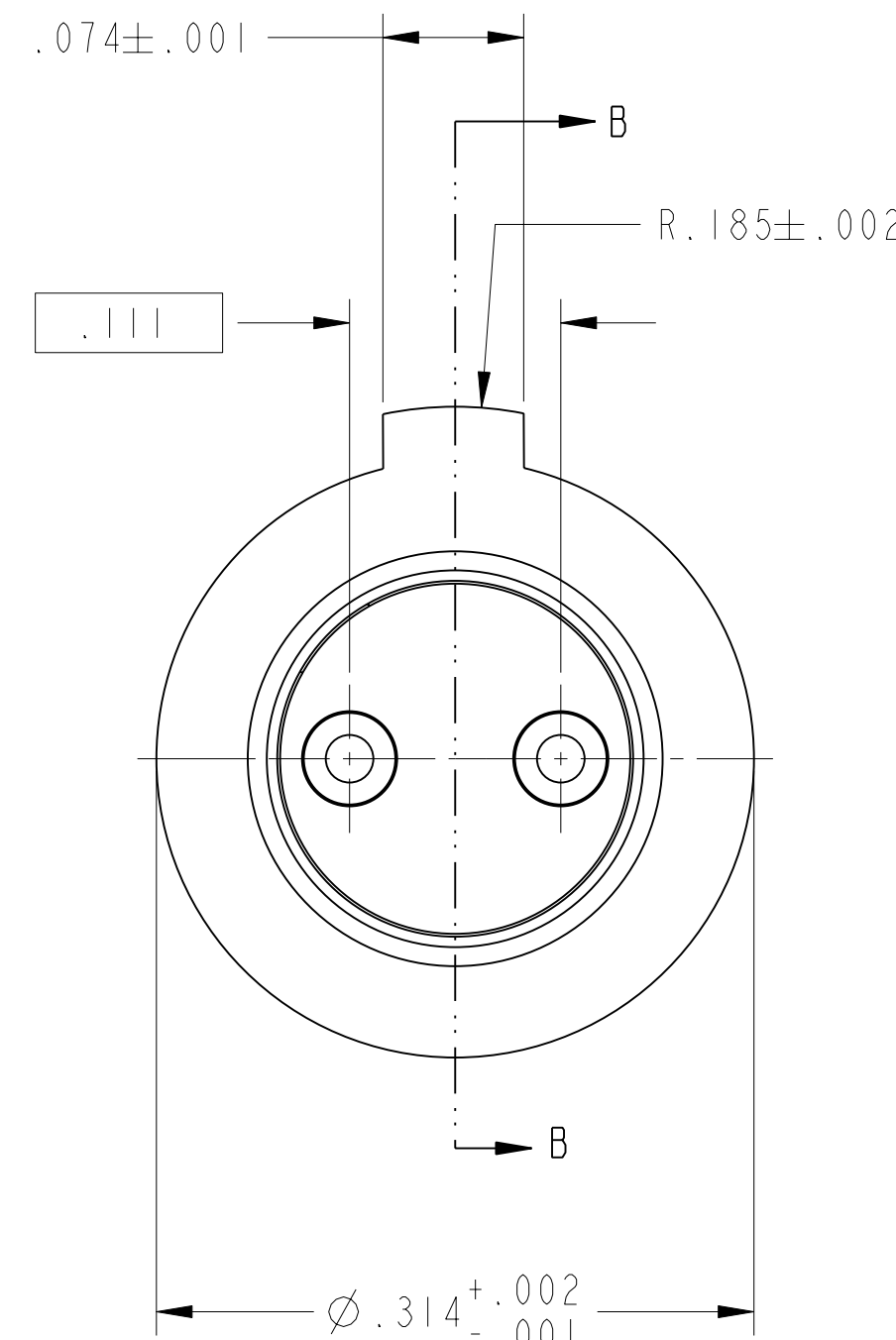
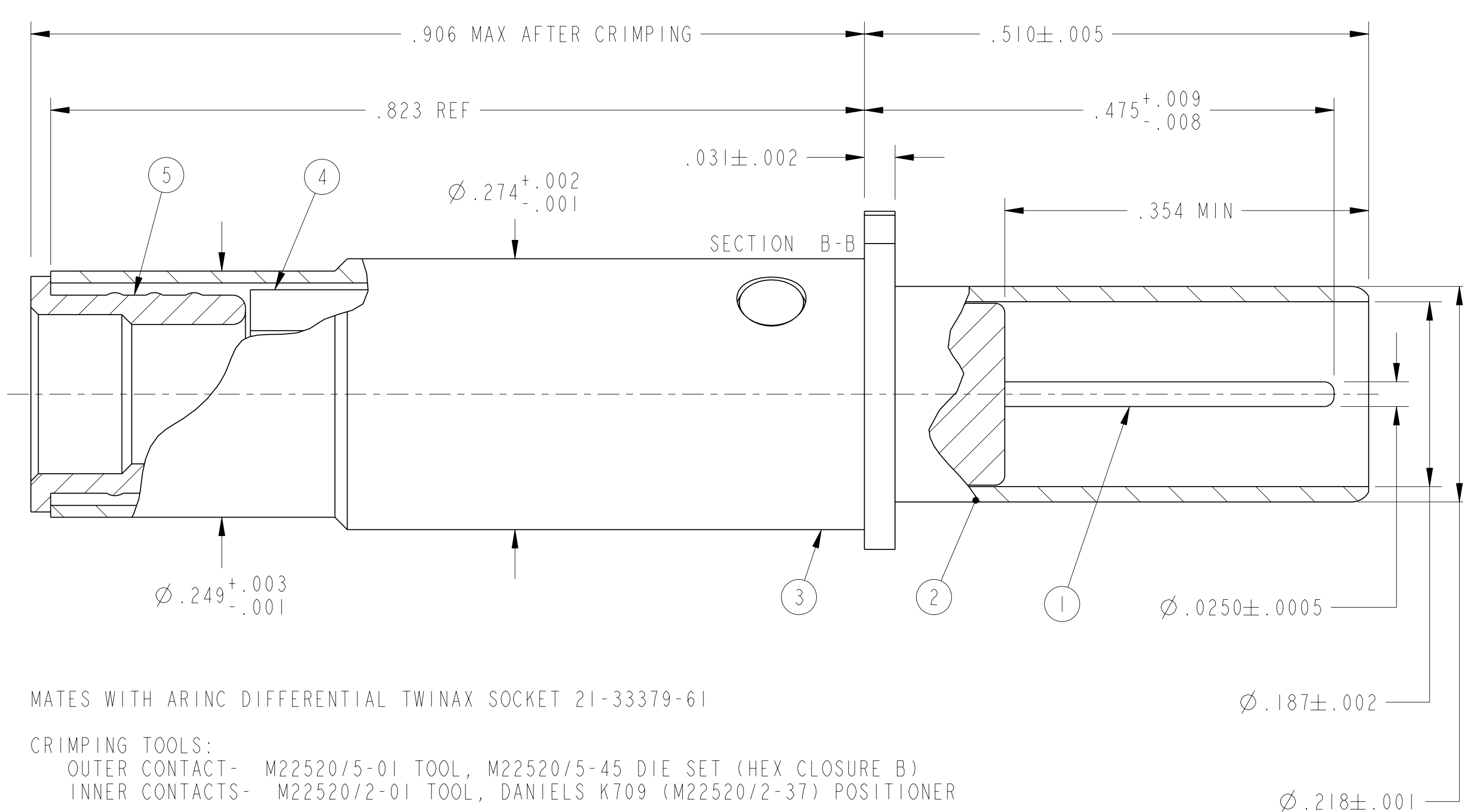
SHEET 1 OF 1

REV. A

C

B

A



7. MATES WITH ARINC DIFFERENTIAL TWINAX SOCKET 21-33379-61
6. CRIMPING TOOLS:
 OUTER CONTACT- M22520/5-01 TOOL, M22520/5-45 DIE SET (HEX CLOSURE B)
 INNER CONTACTS- M22520/2-01 TOOL, DANIELS K709 (M22520/2-37) POSITIONER
5. TERMINATES TWINAX CABLE GC875TM24H (77 OHMS).
4. DRAWING ILLUSTRATES FINAL ASSEMBLY. CONTACT COMPONENTS ARE SHIPPED UNASSEMBLED. INSTALLATION INSTRUCTIONS (NOT ILLUSTRATED) ARE PACKAGED WITH EACH ASSEMBLY. PACKAGE PER PRODUCTION PROCESS SHEET.
3. MATERIALS:
 OUTER & INNER CONTACTS- BERYLLIUM COPPER PER ASTM-B-196
 SHIELD FERRULE- BRASS PER ASTM B453 OR QQ-B-626
 FRONT INSULATOR & SPACER INSULATOR- TFE RESIN PER AMS 3651
2. FINISH:
 GOLD PLATED PER MIL-G-45204 TYPE II, GRADE C, CLASS I (.000050 MIN)
 OVER NICKEL PLATE PER QQ-N-290 (.000050 MIN).
1. CONTACTS MEET THE APPLICABLE REQUIREMENTS OF ABS0973

NOTES:

THE USE OF THIS DOCUMENT IS UNLIMITED. HOWEVER, DOCUMENTS REFERENCED HEREON MAY CONTAIN LIMITED RIGHTS DATA.

RELEASED / Aug . 04 2005, 01:08 PM

N/A	PRO/ENGINEER INFORMATION
N/A	Pro/e Model Used: D-TWIN_ARINC_BP_ASY-61_ASSEM Drawing Name: 21-33378-61_BP_ARINC_D-TWIN
	NEXT ASSEMBLY

UNLESS OTHERWISE SPECIFIED

LINEAR DIMENSIONS ARE IN INCHES
TOLERANCES:
 .XXXX = ±.0005 ANGLES= ±2°
 .XXX = ±.010
 .XX = ±.03
 .X = ±.1

DIM. & TOL. PER ASME Y14.5M;
 DRM PER MIL-DTL-31000;
 OTHER Amphenol Sds. PER 9-3800

LEGENDS:
 =FLAG NOTE CALL OUT
 REFERENCE ONLY

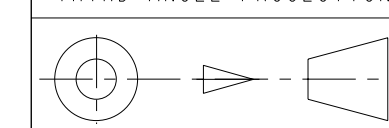
SPECIFICATIONS

MATERIAL SPEC.
N/A

PROCESS SPEC.
N/A

POS	QTY	PART NUMBER	DESCRIPTION	NOTE
6	1	L-2119-AU	INSTALLATION INSTRUCTIONS	4
5	1	21-033378-066	SHIELD FERRULE	
4	1	21-033382-005 OR 21-033382-025	SPACER INSULATOR	
3	1	21-033382-004	OUTER CONTACT	
2	1	21-033378-003	FRONT INSULATOR	
1	2	21-033382-002	INNER CONTACT	

APPROVALS		DATE
PREPARED BY	LRATCHFORD	25-Jul-05
ENGINEER IN CHARGE	LRATCHFORD	
DESIGN MANAGER	ADAVIS	
DESIGN ACTIVITY GROUP	MIL AERO	
THIRD ANGLE PROJECTION		



PARTS LIST			
AMPHENOL CORPORATION 40-60 DELAWARE AVENUE SIDNEY, N.Y. 13838			
CONTACT, PIN, DIFFERENTIAL TINWAX, TYPE ARINC SPECIAL			
SIZE C	CAGE CODE 77820	DOCUMENT NO. 21-033378-061	REV. A
SCALE: 10.0 REF: 21-33378-()			SHEET 1 OF 1

SHEET 1 OF 1

21-033378-061

A

FORMAT: C-U-L-R-V-B

21-033378-061

SHEET 1 OF 1

REV. A