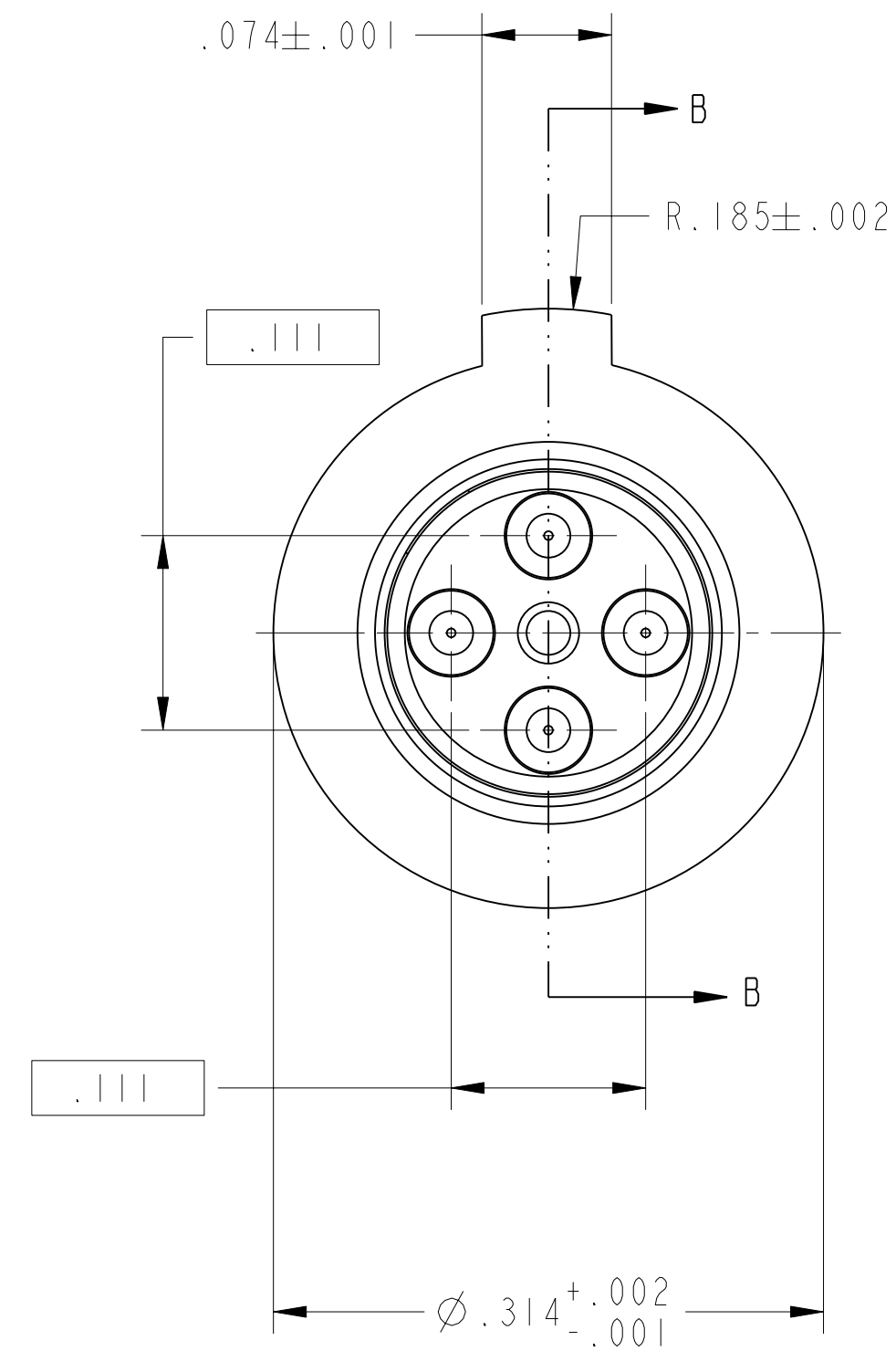
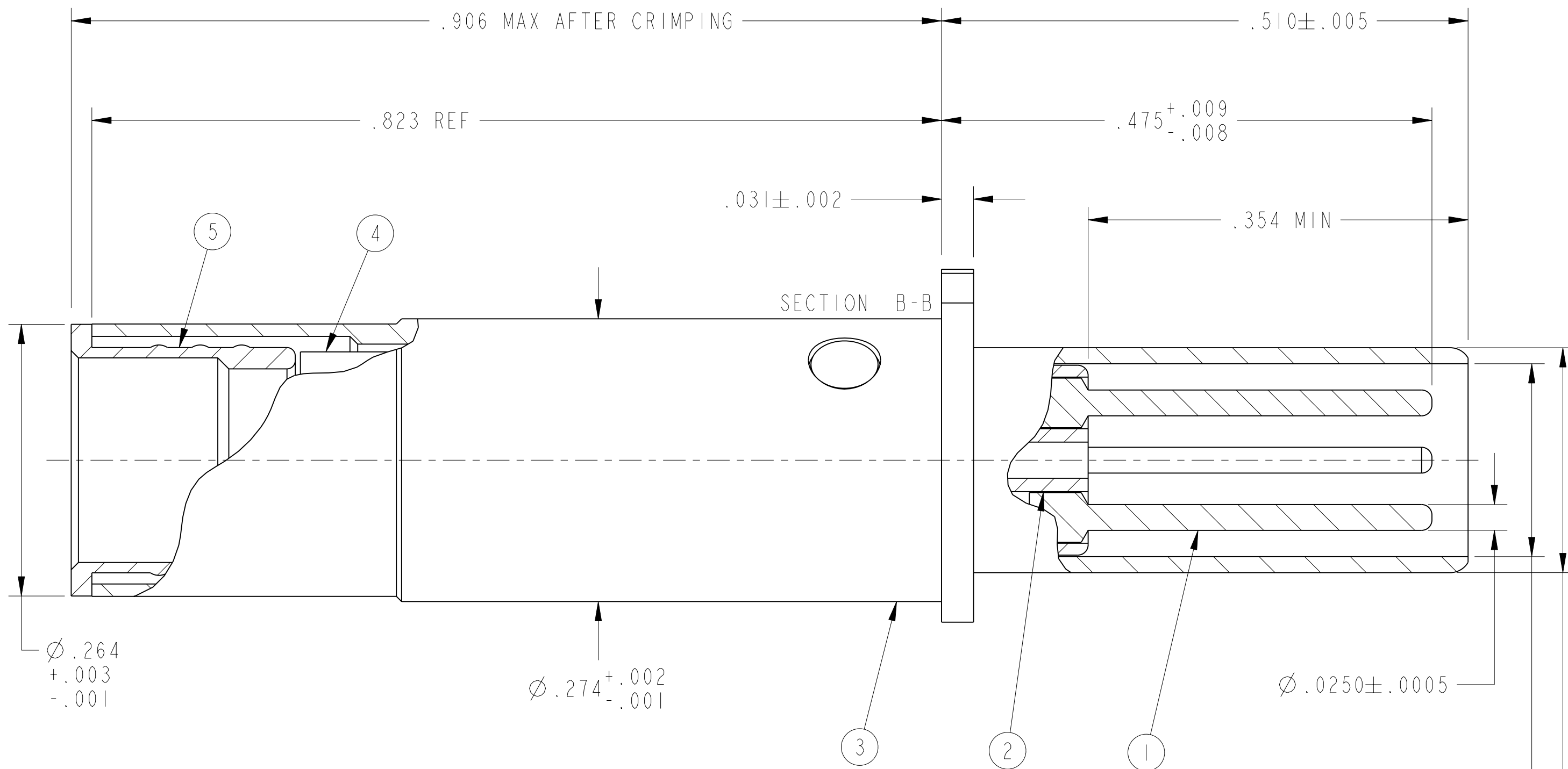


REV. B		SHEET 1 OF 1		21-33382-61	
REVISIONS					
LTR	DESCRIPTION			DATE	
A	INITIAL RELEASE				
B	(CLII) MOD PARTS LIST ECN: 96326			JHEATH 5/6/05	



7. MATES WITH ARINC QUADRAX SOCKET 21-33383-61
6. CRIMPING TOOLS:  
 OUTER CONTACT- M22520/5-01 TOOL, M22520/5-45 DIE SET (HEX CLOSURE A)  
 INNER CONTACTS- M22520/2-01 TOOL, DANIELS K709 (M22520/2-37) POSITIONER
5. TERMINATES QUADRAX CABLE TENSOLITE 26473/02006X-4(LD) OR GORE RNC8328 (150 OHMS).
4. DRAWING ILLUSTRATES FINAL ASSEMBLY. CONTACT COMPONENTS ARE SHIPPED UNASSEMBLED. INSTALLATION INSTRUCTIONS (NOT ILLUSTRATED) ARE PACKAGED WITH EACH ASSEMBLY. PACKAGE PER PRODUCTION PROCESS SHEET.
3. MATERIALS:  
 OUTER & INNER CONTACTS- BERYLLIUM COPPER PER ASTM-B-196  
 SHIELD FERRULE- BRASS PER ASTM B453 OR QQ-B-626  
 FRONT INSULATOR & SPACER INSULATOR- TFE RESIN PER AMS 3651
2. FINISH:  
 GOLD PLATED PER MIL-G-45204 TYPE II, GRADE C, CLASS I (.000050 MIN)  
 OVER NICKEL PLATE PER QQ-N-290 (.000050 MIN).
1. CONTACTS MEET THE APPLICABLE REQUIREMENTS OF ABS0973.

NOTES:

THE USE OF THIS DOCUMENT IS UNLIMITED. HOWEVER, DOCUMENTS REFERENCED HEREON MAY CONTAIN LIMITED RIGHTS DATA.

N/A	PRO/ENGINEER INFORMATION
N/A	Pro/e Model Used: QUAD_ARINC_BP_ASY-61-150.ASSEM
N/A	Drawing Name: 21-33382-61_BP_ARINC_QUAD_ASY
N/A	NEXT ASSEMBLY

UNLESS OTHERWISE SPECIFIED

LINEAR DIMENSIONS ARE IN INCHES  
 TOLERANCES:  
 .XXXX = ±.0005 ANGLES= ±2°  
 .XXX = ±.010  
 .XX = ±.03  
 .X = ±.1

DIM. & TOL. PER ASME Y14.5M;  
 DRM PER MIL-DTL-31000;  
 OTHER Amphenol Sds. PER 9-3800

LEGENDS:  
 = FLAG NOTE CALL OUT  
 REFERENCE ONLY

SPECIFICATIONS

MATERIAL SPEC.  
N/A

PROCESS SPEC.  
N/A

POS	QTY	PART NUMBER	DESCRIPTION	NOTE
6	1	L-2119-L	INSTALLATION INSTRUCTIONS	4
5	1	21-33384-36	SHIELD FERRULE	
4	1	21-33382-5 OR 21-33382-25	SPACER INSULATOR	
3	1	21-33382-44	OUTER CONTACT	
2	1	21-33382-13	FRONT INSULATOR	
1	4	21-33382-12	INNER CONTACT	

APPROVALS		DATE
PREPARED BY	LRATCHFORD	05-Mar-03
ENGINEER IN CHARGE	LRATCHFORD	
DESIGN MANAGER	ADAVIS	
DESIGN ACTIVITY GROUP	MIL AERO	
THIRD ANGLE PROJECTION		

PARTS LIST

**AMPHENOL CORPORATION**  
 40-60 DELAWARE AVENUE  
 SIDNEY, N.Y. 13838

**CONTACT, PIN, QUADRAX,  
 ELECTRICAL CONNECTOR,  
 TYPE ARINC AIRBUS SPECIAL**

SIZE <b>C</b>	CAGE CODE <b>77820</b>	DOCUMENT NO. <b>21-33382-61</b>	REV. <b>B</b>
------------------	---------------------------	------------------------------------	------------------

SCALE: 10.0 REF: 21-33382-31 SHEET 1 OF 1

21-33382-61

SHEET 1 OF 1

REV. B

C

B

A

SHEET 1 OF 1

21-33382-61

A

U