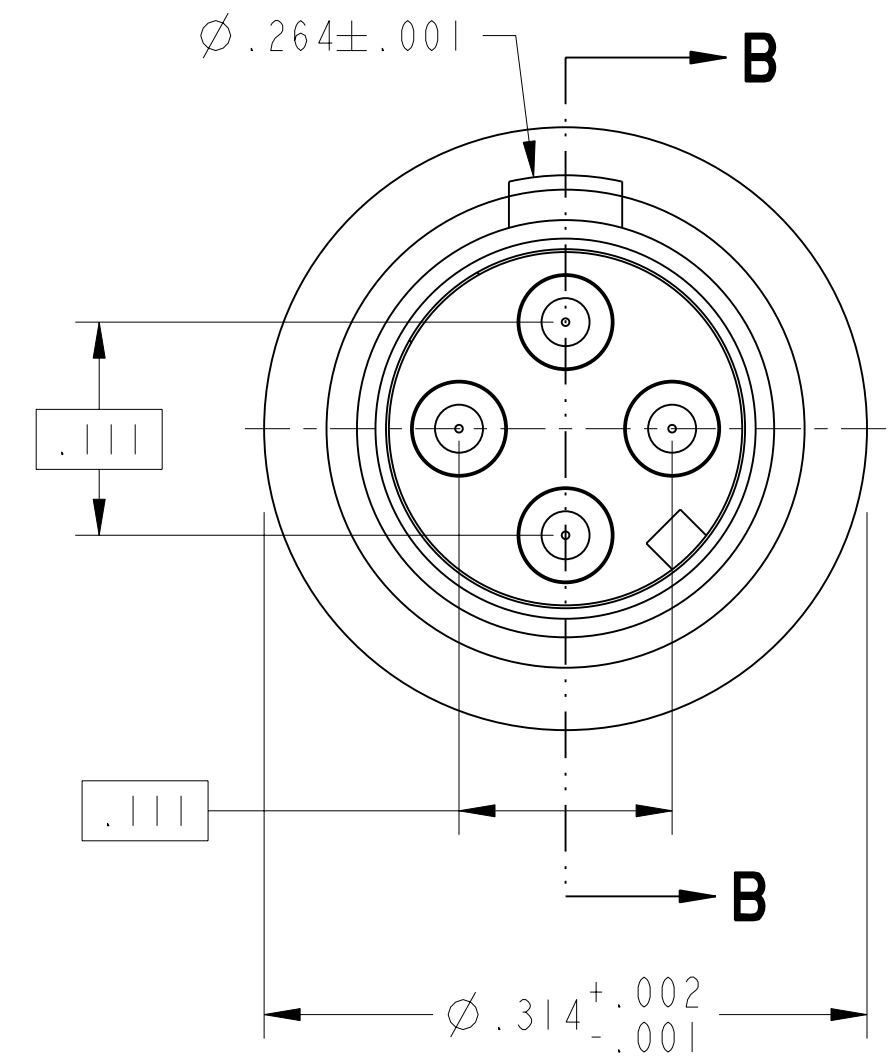
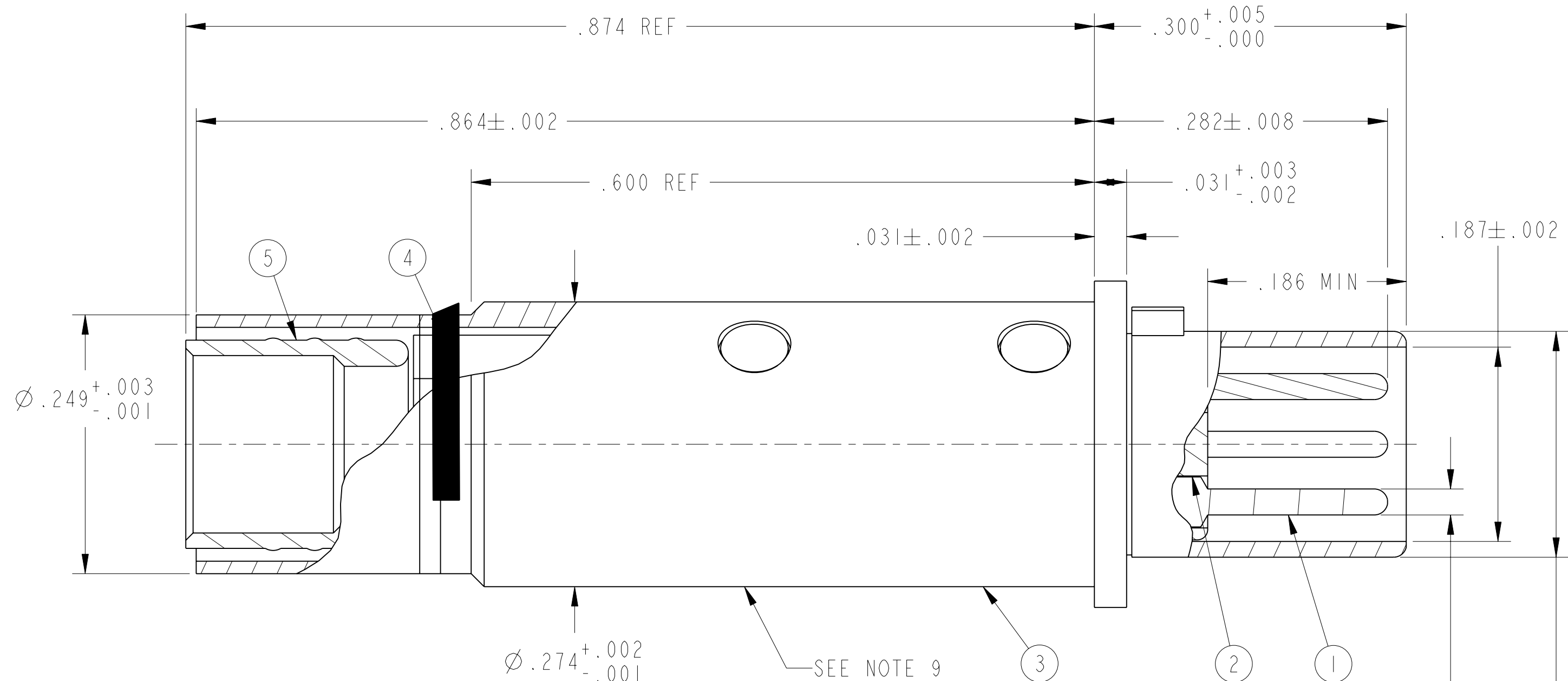


REV. G	SHEET 1 OF 1	DOCUMENT NO. 21-033384-141
REVISIONS		
LTR	DESCRIPTION	DATE
C	SEE RCD DWG FOR REV A&B (CL11) SEE ENG CHG ECN: A5450	JVEGA 06/26/2008
D	CL(11). SEE ECN: A8426-0000	11/4/09
E	CL(11). SEE ECN: B1463-0000	6/10/11
F	CL(11). SEE ECN: B1913-0000	4/2/12
G	CL(11). SEE ECN: C0444-000	3/18/2015



**SECTION B-B**  
SCALE 10

8. PROCESS SPEC:  
9-6700, 9-3895, 9-7530, 9-3856-5
7. MATES WITH D38999 QUADRAX SOCKETS 21-33385-141.
6. CRIMPING TOOLS:  
OUTER CONTACT- M22520/5-01 TOOL, M22520/5-45 DIE SET (HEX CLOSURE B)  
INNER CONTACTS- M22520/2-01 TOOL, DANIELS K709 (M22520/2-37) POSITIONER
5. TERMINATES QUADRAX CABLE BMS13-72T03C04G024 (S280W502-4) OR EQUIVALENT.
4. DRAWING ILLUSTRATES FINAL ASSEMBLY. CONTACT COMPONENTS ARE SHIPPED UNASSEMBLED. INSTALLATION INSTRUCTIONS & PIGGYBACK GROMMET SEAL (NOT ILLUSTRATED) ARE PACKAGED WITH EACH ASSEMBLY. PACKAGE PER PRODUCTION PROCESS SHEET.
3. MATERIALS:  
OUTER CONTACTS- BRASS PER ASTM B 453 OR EQUIVALENT  
SHIELD FERRULE- BRASS PER ASTM B 455 OR EQUIVALENT  
FRONT INSULATOR- TEFLON PFA PER ASTM D 3307 OR EQUIVALENT  
SPACER INSULATOR- PFI ULTEM PER ASTM D 5205 OR EQUIVALENT  
INNER CONTACT- C97 LEADED NICKEL COPPER
2. FINISH:  
GOLD PLATED PER SAE AMS 2422 (.000050 MIN)  
OVER NICKEL PLATE PER SAE AMS-QQ-N-290, CLASS 2 (.000100 MIN).
1. CONTACTS MEET THE APPLICABLE REQUIREMENTS OF BACC47GM-1.

9. STAMP TRADEMARK PER 9-6700 TYPE IV & DATE CODE PER 9-3895 IN APPROX POSITION SHOWN PER 9-7530 OR 9-3856-5

POS	QTY	PART NUMBER	DESCRIPTION	NOTE
7	1	L-2119-AV	INSTALLATION INSTRUCTIONS	4
6	1	21-033321-029	PIGGYBACK GROMMET SEAL	4
5	1	21-033384-146	SHIELD FERRULE	
4	1	21-033382-145	SPACER INSULATOR	
3	1	21-033384-144	OUTER CONTACT	
2	1	21-033384-143	FRONT INSULATOR	
1	4	21-033384-142	INNER CONTACT	

UNLESS OTHERWISE SPECIFIED	SPECIFICATIONS
LINEAR DIMENSIONS ARE IN INCHES TOLERANCES: .XXXX = ±.0005 ANGLES= ±2° .XXX = ±.010 .XX = ±.03 .X = ±.1	MATERIAL SPEC. N/A
DIM. & TOL. PER ASME Y14.5M; DRM PER MIL-DTL-31000; OTHER Amphenol Stds. PER 9-3800	PROCESS SPEC. SEE NOTE 8
LEGENDS: =FLAG NOTE CALL OUT REFERENCE ONLY	

APPROVALS		DATE
PREPARED BY	DJSMITH	10-APR-07
ENGINEER IN CHARGE	LRATCHFORD	
DESIGN MANAGER	ADAVIS	
DESIGN ACTIVITY GROUP	MIL AERO	
THIRD ANGLE PROJECTION		

**AMPHENOL CORPORATION**  
40-60 DELAWARE AVENUE  
SIDNEY, N.Y. 13858

**CONTACT, PIN, QUADRAX,  
ELECTRICAL CONNECTOR,  
TYPE D38999 I & III**

SIZE <b>C</b>	CAGE CODE <b>77820</b>	DOCUMENT NO. <b>21-033384-141</b>	REV. <b>G</b>
SCALE: 10.0		REF. 21-33384-51	SHEET 1 OF 1

THE USE OF THIS DOCUMENT IS UNLIMITED. HOWEVER, DOCUMENTS REFERENCED HEREON MAY CONTAIN LIMITED RIGHTS DATA.	N/A	PRO/ENGINEER INFORMATION Pro/e Model Used: QUAD_TV_BP_ASY_R1V-51.ASSEM Drawing Name: 21-033384-141
DOCUMENT NO. <b>21-033384-141</b>	SHEET 1 OF 1	REV. <b>G</b>

DOCUMENT NO. 21-033384-141

SHEET 1 OF 1

REV. G

C

B

A

FORMAT: C-U-E-1

VERSION 01  
REVISION G  
RELEASE STATE WIP

DOCUMENT NO. 21-033384-141

SHEET 1 OF 1

REV. G