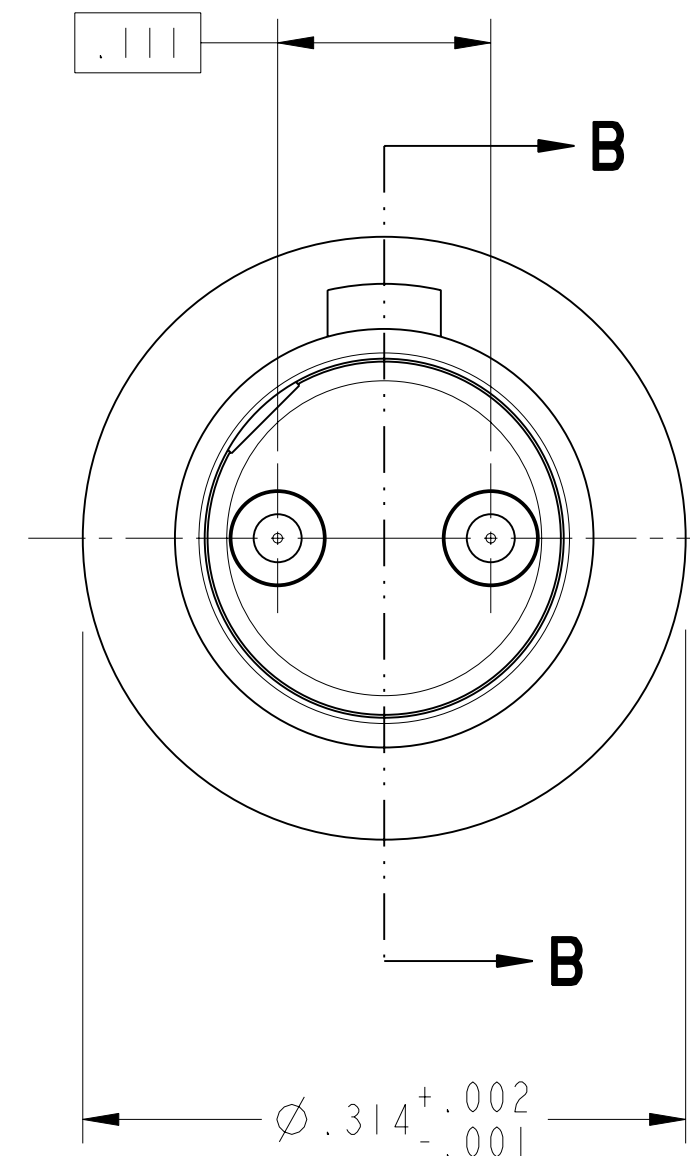
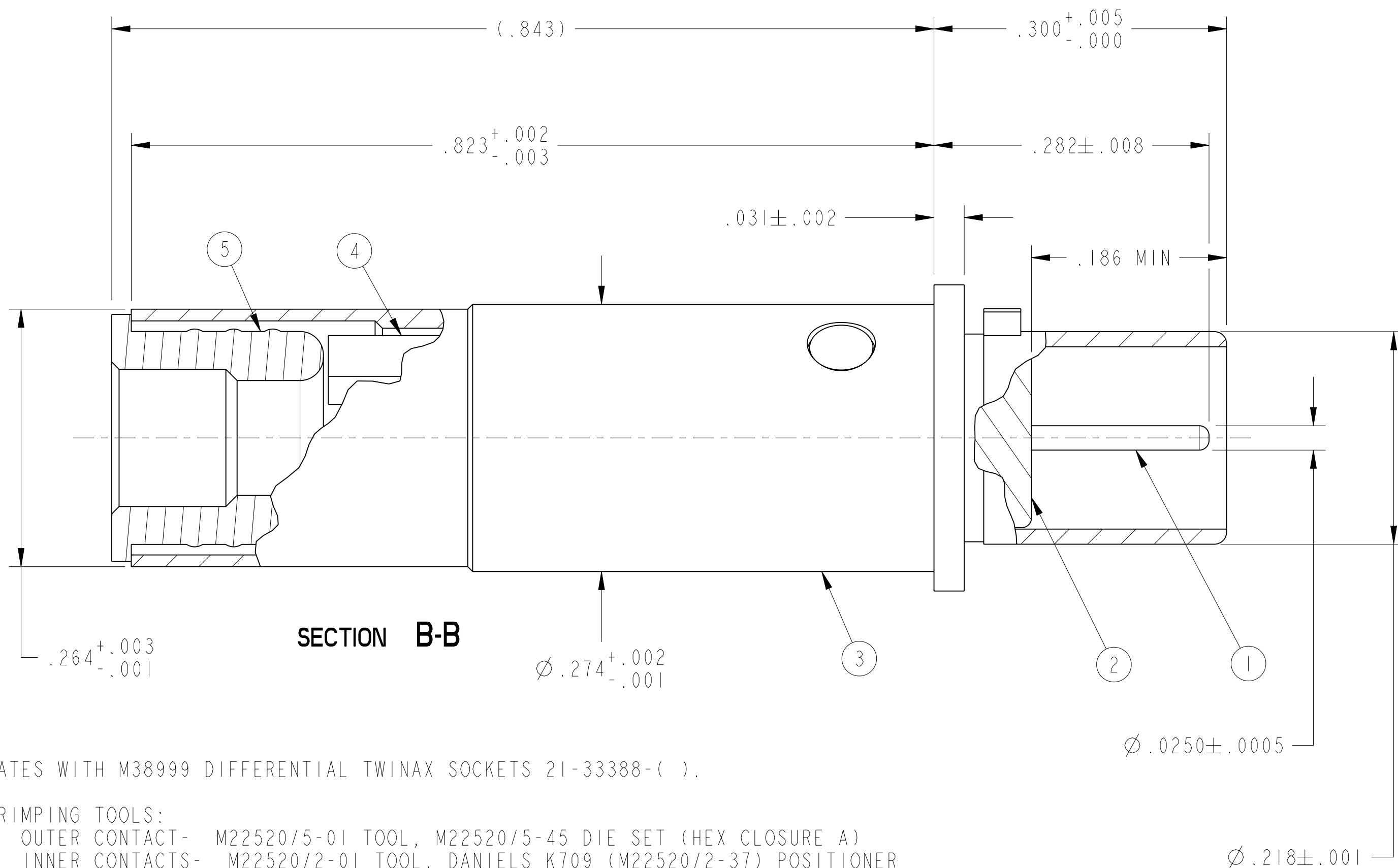


REVISIONS		
LTR	DESCRIPTION	DATE
A	INITIAL RELEASE	----



- MATES WITH M38999 DIFFERENTIAL TWINAX SOCKETS 21-33388-().
- CRIMPING TOOLS:
 OUTER CONTACT- M22520/5-01 TOOL, M22520/5-45 DIE SET (HEX CLOSURE A)
 INNER CONTACTS- M22520/2-01 TOOL, DANIELS K709 (M22520/2-37) POSITIONER
- TERMINATES TWINAX CABLE RAYCHEM 0026A0024 (100 OHM) OR EQUIVALENT.
- DRAWING ILLUSTRATES FINAL ASSEMBLY. CONTACT COMPONENTS ARE SHIPPED UNASSEMBLED. INSTALLATION INSTRUCTIONS & PIGGYBACK GROMMET SEAL (NOT ILLUSTRATED) ARE PACKAGED WITH EACH ASSEMBLY. PACKAGE PER PRODUCTION PROCESS SHEET.
- MATERIALS:
 OUTER & INNER CONTACTS- BERYLLIUM COPPER PER ASTM-B-196
 SHIELD FERRULE- BRASS PER ASTM B453 OR EQUIVALENT
 FRONT INSULATOR & SPACER INSULATOR- TFE RESIN PER AMS 3651 OR EQUIVALENT
- FINISH:
 GOLD PLATED PER MIL-G-45204 TYPE II, GRADE C, CLASS I (.000050 MIN)
 OVER NICKEL PLATE PER QQ-N-290 (.000050 MIN).
- CONTACTS MEET THE ENVELOPE DIMENSIONAL REQUIREMENTS OF M39029/90.

NOTES:

THE USE OF THIS DOCUMENT IS UNLIMITED. HOWEVER, DOCUMENTS REFERENCED HEREON MAY CONTAIN LIMITED RIGHTS DATA.

RELEASED / Sep . 09 2009, 2:16:05 PM

DOCUMENT NO. 21-033387-071 SHEET 1 OF 1 REV. A

N/A

NEXT ASSEMBLY

PRO/ENGINEER INFORMATION

Pro/e Model Used:

21-033387-071.ASSEM

Drawing Name:

21-033387-071

UNLESS OTHERWISE SPECIFIED

LINEAR DIMENSIONS ARE IN INCHES

TOLERANCES:

.XXXX = ±.0005 ANGLES= ±2°

.XXX = ±.010

.XX = ±.03

.X = ±.1

DIM. & TOL. PER ASME Y14.5M;

DRM PER MIL-DTL-31000;

OTHER Amphenol Stds. PER 9-3800

LEGENDS:

=FLAG NOTE CALL OUT REFERENCE ONLY

SPECIFICATIONS

MATERIAL SPEC.

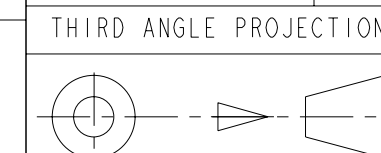
N/A

PROCESS SPEC.

N/A

POS	QTY	PART NUMBER	DESCRIPTION	NOTE
7	1	L-2119-BJ	INSTALLATION INSTRUCTIONS	4
6	1	21-033321-005	PIGGYBACK GROMMET SEAL	4
5	1	21-033384-046	SHIELD FERRULE	
4	1	21-033382-005 OR 21-033382-025	SPACER INSULATOR	
3	1	21-033384-044	OUTER CONTACT	
2	1	21-033387-043	FRONT INSULATOR	
1	2	21-033384-022	INNER CONTACT	

APPROVALS	DATE
PREPARED BY RATCHFORD	
ENGINEER IN CHARGE RATCHFORD	31-Aug-09
DESIGN MANAGER E. SHEPLER	
DESIGN ACTIVITY GROUP MIL-AERO	



PARTS LIST			
AMPHENOL CORPORATION 40-60 DELAWARE AVENUE SIDNEY, N.Y. 13858			
CONTACT, PIN, DIFFERENTIAL TWINAX, TYPE M38999 I & III			
SIZE C	CAGE CODE 77820	DOCUMENT NO. 21-033387-071	REV. A
SCALE: 10:0	REF. 21-033387-041	SHEET 1 OF 1	

DOCUMENT NO. 21-033387-071

SHEET 1 OF 1

REV. A

RELEASE STATE Released

REVISION A

VERSION 0

DOCUMENT NO. 21-033387-071

SHEET 1 OF 1

REV. A

C

B

A