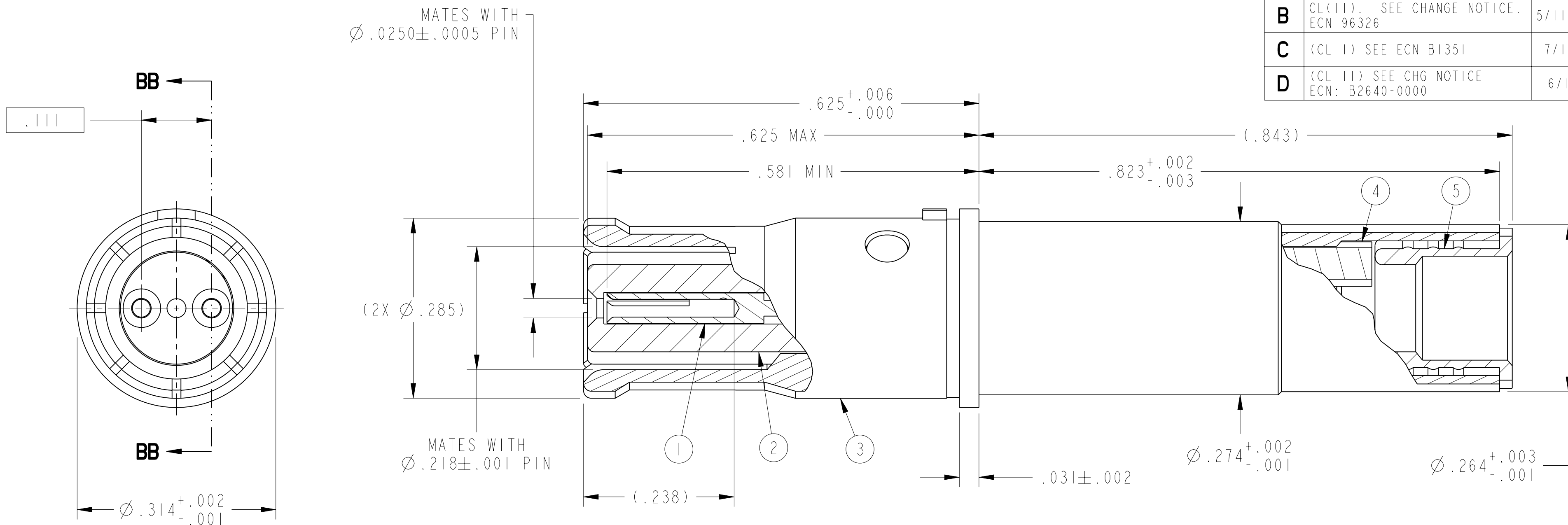


D		SHEET 1 OF 1		21-33388-31	
REVISIONS					
LTR	DESCRIPTION			DATE	
A	INITIAL RELEASE			17May2004	
B	CL(11). SEE CHANGE NOTICE. ECN 96326			5/11/2005	
C	(CL 1) SEE ECN B1351			7/14/11	
D	(CL 11) SEE CHG NOTICE ECN: B2640-0000			6/1/12	



PARTIAL SECTION BB-BB

7. MATES WITH D38999 DIFFERENTIAL TWINAX PINS 21-33387-().
6. CRIMPING TOOLS:
 OUTER CONTACT- M22520/5-01 TOOL, M22520/5-45 DIE SET (HEX CLOSURE A)
 INNER CONTACTS- M22520/2-01 TOOL, DANIELS K709 (M22520/2-37) POSITIONER
5. TERMINATES TWINAX CABLE TENSOLITE 26483/06071X-2(LD) (150 OHM) OR EQUIVALENT.
4. DRAWING ILLUSTRATES FINAL ASSEMBLY. CONTACT COMPONENTS ARE SHIPPED UNASSEMBLED
 INSTALLATION INSTRUCTIONS & PIGGYBACK GROMMET SEAL (NOT ILLUSTRATED) ARE
 PACKAGED WITH EACH ASSEMBLY. PACKAGE PER PRODUCTION PROCESS SHEET.
3. MATERIALS:
 OUTER & INNER CONTACTS- BERYLLIUM COPPER PER ASTM-B-196
 SHIELD FERRULE- BRASS PER ASTM B453 OR QQ-B-626
 FRONT INSULATOR & SPACER INSULATOR- TFE RESIN PER AMS 3651
2. FINISH:
 GOLD PLATED PER MIL-G-45204 TYPE II, GRADE C, CLASS I (.000050 MIN)
 OVER NICKEL PLATE PER QQ-N-290 (.000050 MIN).
1. CONTACTS MEET THE ENVELOPE DIMENSIONAL REQUIREMENTS OF M39029/91.

NOTES:

THE USE OF THIS DOCUMENT IS UNLIMITED. HOWEVER, DOCUMENTS REFERENCED HEREON MAY CONTAIN LIMITED RIGHTS DATA.

N/A
NEXT ASSEMBLY

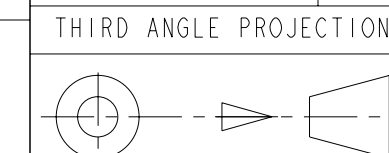
PRO/ENGINEER INFORMATION
 Pro/e Model Used:
 21-033388-031.ASSEM
 Drawing Name:
 21-33388-31

UNLESS OTHERWISE SPECIFIED
 LINEAR DIMENSIONS ARE IN INCHES
 TOLERANCES:
 .XXXX = ±.0005 ANGLES= ±2°
 .XXX = ±.010
 .XX = ±.03
 .X = ±.1
 DIM. & TOL. PER ASME Y14.5M;
 DRM PER MIL-DTL-31000;
 OTHER Amphenol Stds. PER 9-3800
 LEGENDS:
 =FLAG NOTE CALL OUT REFERENCE ONLY

SPECIFICATIONS
 MATERIAL SPEC.
 N/A
 PROCESS SPEC.
 N/A

POS	QTY	PART NUMBER	DESCRIPTION	NOTE
7	1	L-2119-AC	INSTALLATION INSTRUCTIONS	4
6	1	21-033321-030	PIGGYBACK GROMMET SEAL	4
5	1	21-33384-106	SHIELD FERRULE	
4	1	21-033382-005 OR 21-033382-025	SPACER INSULATOR	
3	1	21-033385-044	OUTER CONTACT	
2	1	21-033388-033	FRONT INSULATOR	
1	2	21-033385-032	INNER CONTACT	

APPROVALS		DATE
PREPARED BY	D. PHILLIPS	
ENGINEER IN CHARGE	LRATCHFORD	09-May-05
DESIGN MANAGER	ADAVIS	
DESIGN ACTIVITY GROUP	MIL AERO	



PARTS LIST			
AMPHENOL CORPORATION 40-60 DELAWARE AVENUE SIDNEY, N.Y. 13858			
CONTACT, SOCKET, DIFFERENTIAL TWINAX, TYPE M38999 I & III			
SIZE C	CAGE CODE 77820	DOCUMENT NO. 21-33388-31	REV. D
SCALE: 8.0		REF. 21-33388-21	SHEET 1 OF 1

21-33388-31

SHEET 1 OF 1

REV. D

C

B

A

FORMAT: C-0-L-E-1

DOCUMENT NO. 21-33388-31

SHEET 1 OF 1

REV. D

RELEASE STATE Released

SHEET 1 OF 1

21-33388-31