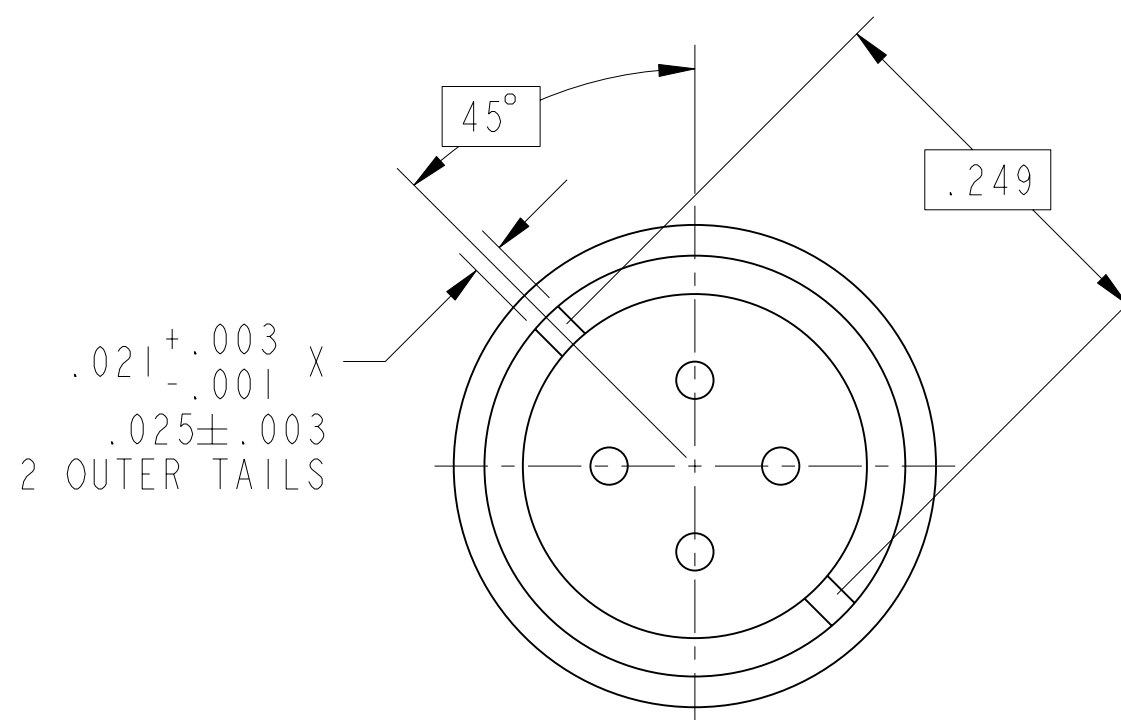




21-33397-21

SHEET 2 OF 2

REV. E



VIEW AT R

- 10. POINT OF ENGAGEMENT WITH A .0250±.0001 DIA FLAT ENDED PIN.
- 9. FOR LEAK CHECKED CONTACT ASSEMBLIES, ADD LAST CHARACTER SUFFIX TO PART NUMBER:
 

DESCRIPTION	SUFFIX	TEST
NOT CHECKED	<NONE>	<NONE>
10 <sup>-3</sup> CC/SEC He	-XXXZ	9-5266-111
15 PSI	-XXXV	9-5266-110
10 PSI	-XXXW	9-5266-110, EXCEPT 10PSI
5 PSI	-XXXV	9-5266-110, EXCEPT 5 PSI
- 8. ALL DIMENSIONS ARE AFTER PLATING AND PRETINNING.
- 7. MATES WITH M38999 QUADRAX PINS 21-33384-( ).
- 6. FIXTURE THEN EPOXY FILL INDICATED AREA WITH EPOXY 9-4954-5 TO HOLD INNER COMPONENTS IN PLACE. .030 MAX EPOXY WICKING BEYOND CONTACT BODY PERMISSIBLE. CURE EPOXY AT 250°F FOR 3 HOURS.
- 5. PROCESS SPEC: 9-4954-5, 9-7894.
- 4. PRETIN INDICATED AREA TO WITHIN .100 MAX OF THE CONTACT BODY PER 9-7894 (PRETINNING IN NITROGEN INERTING WAVE SOLDER POT RECOMMENDED).
- 3. MATERIALS:
  - OUTER & INNER CONTACTS- BERYLLIUM COPPER PER ASTM-B-196
  - FRONT INSULATOR & SPACER INSULATOR- TFE RESIN PER ASTM 3651
- 2. FINISH:
  - GOLD PLATED PER MIL-G-45204 TYPE II, GRADE C, CLASS I (.000050 MIN)
  - OVER NICKEL PLATE PER QQ-N-290 (.000050 MIN).
- 1. CONTACTS MEET THE ENVELOPE DIMENSIONAL REQUIREMENTS OF M39029/91.

NOTES:

THE USE OF THIS DOCUMENT IS UNLIMITED. HOWEVER, DOCUMENTS REFERENCED HEREON MAY CONTAIN LIMITED RIGHTS DATA.

FORMAT: C-U-E-I

21-33397-21

SHEET 2 OF 2

REV. E

SIZE C	CAGE CODE 77820	DOCUMENT NO. 21-33397-21	REV. E
SCALE: 8.0	REF: 21-33385-21&21-33398-1	SHEET 2 OF 2	

VERSION I

REVISION E

RELEASE STATE Released

REV. E

SHEET 2 OF 2

21-33397-21