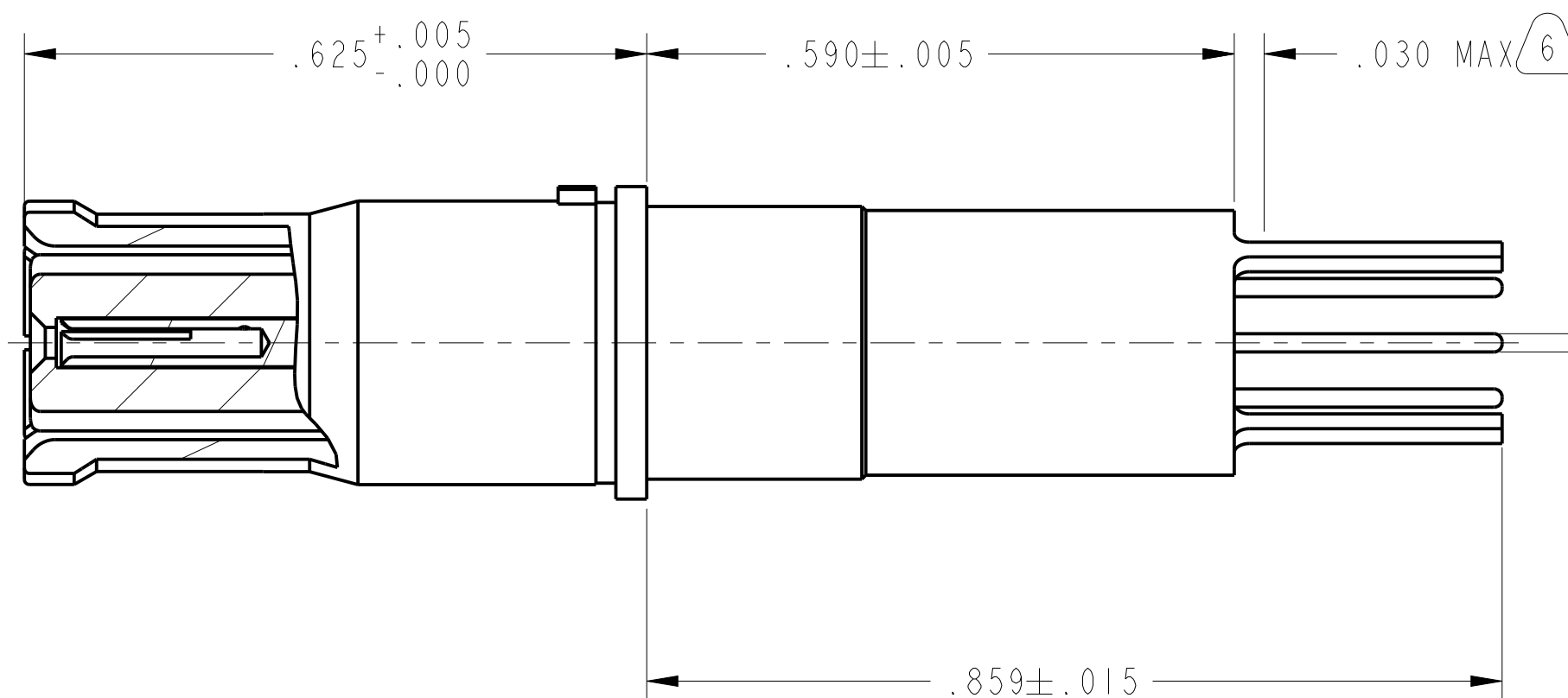
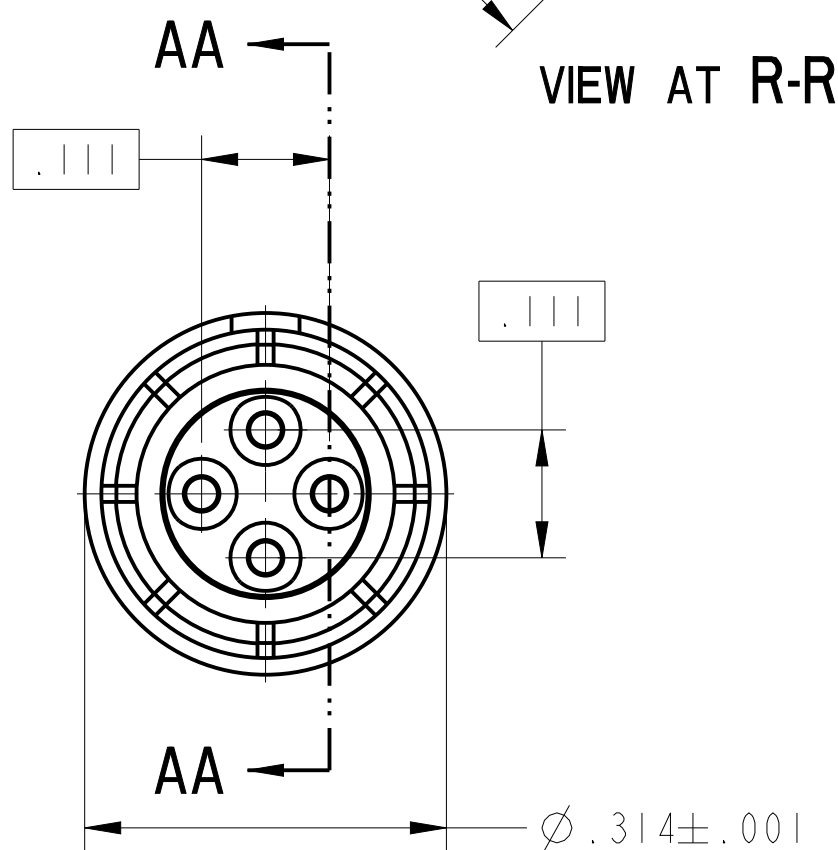
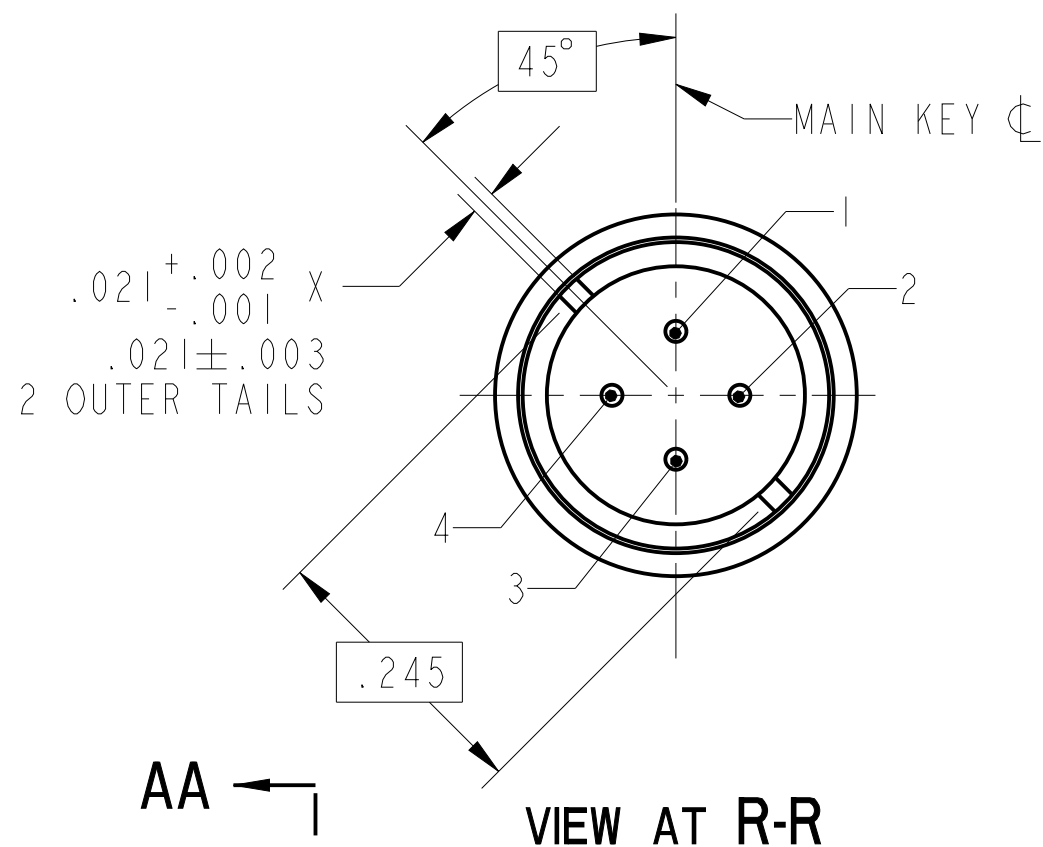
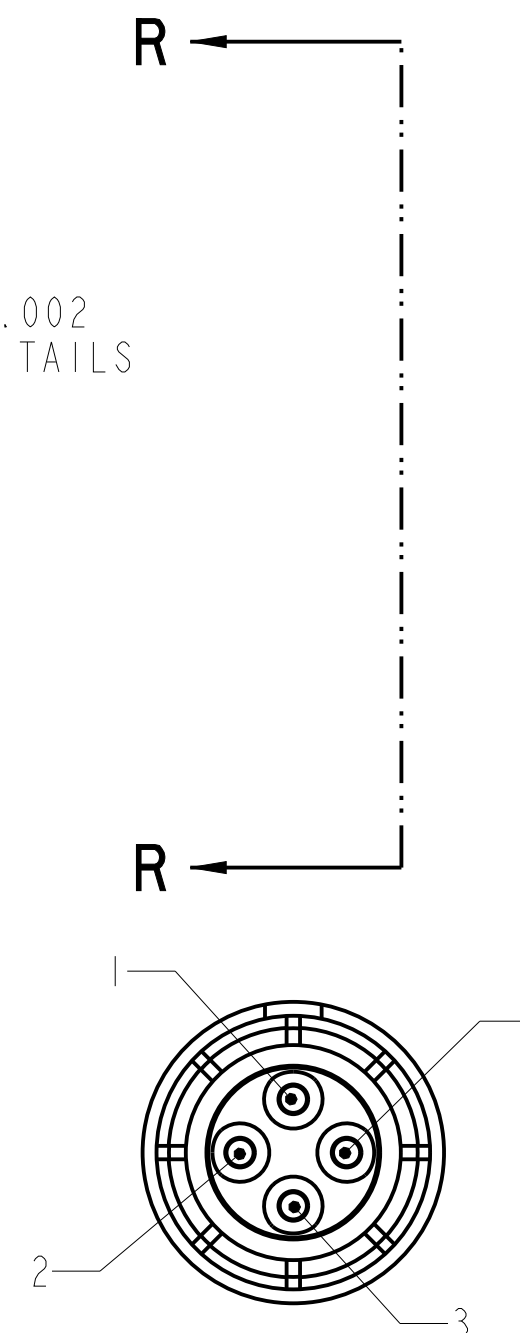


REV. A	SHEET 1 OF 1	21-033397-121
REVISIONS M		
LTR	DESCRIPTION	DATE
A	INITIAL RELEASE	15-May-2019

DOCUMENT NO. 21-033397-121  
 SHEET 1 OF 1  
 REV. A  
 C  
 B  
 A



PARTIAL SECTION AA-AA



MATING FACE VIEW  
SCALE 5.000

7. DIFFERENTIAL PAIRS:  
 PAIR #1: 1-3  
 PAIR #2: 2-4

6. EPOXY MAY BE PRESENT ON CONTACT TAILS IN INDICATED AREA.

5. MATES WITH M38999 QUADRAX PINS 21-033384-( ) & OTHERS.

4. ALL DIMENSIONS ARE AFTER PLATING.

3. MATERIALS:  
 OUTER & INNER CONTACTS- BERYLLIUM COPPER PER ASTM-B-196  
 FRONT & SPACER INSULATORS- TFE RESIN PER AMS 3651 OR ASTM D1710 OR PFA340

2. FINISH:  
 GOLD PLATED PER MIL-G-45204 TYPE II, GRADE C, CLASS I (.000050 MIN)  
 OVER NICKEL PLATE PER QQ-N-290 (.000050 MIN).

1. CONTACTS MEET THE ENVELOPE DIMENSIONAL REQUIREMENTS OF AS39029/91.

8. CONTACT ASSEMBLY SHALL BE SUBJECTED TO ELEVATED TEMPERATURE VACUUM DEGAS FOR SPACE APPLICATIONS PRIOR TO PACKAGING AND SHIPPING.

NOTES:

THE USE OF THIS DOCUMENT IS UNLIMITED. HOWEVER, DOCUMENTS REFERENCED HEREON MAY CONTAIN LIMITED RIGHTS DATA.

RELEASED / May. 29 2019, 11:13:13 AM

10-646402-549X & OTHERS  
 NEXT ASSEMBLY

PRO/ENGINEER INFORMATION  
 Pro/e Model Used:  
 21-033397-121.ASSEM  
 Drawing Name:  
 21-033397-121

UNLESS OTHERWISE SPECIFIED	SPECIFICATIONS	POS	QTY	PART NUMBER	DESCRIPTION	NOTE
LINEAR DIMENSIONS ARE IN INCHES TOLERANCES: .XXXX = ±.0005 ANGLES= ±2° .XXX = ±.010 .XX = ±.03 .X = ±.1 DIM. & TOL. PER ASME Y14.5M; DRM PER MIL-STD-31000; OTHER Amphenol Stds. PER 9-3800 LEGENDS: =FLAG NOTE CALL OUT REFERENCE ONLY	MATERIAL SPEC.	APPROVALS		DATE	PARTS LIST	
	NONE	PREPARED BY	D.SIDOTI	25-Feb-19	<b>AMPHENOL CORPORATION</b> 40-60 DELAWARE AVENUE SIDNEY, N.Y. 13658	
PROCESS SPEC.	NONE	ENGINEER IN CHARGE	D.WILDING		<b>CONTACT, SOCKET, QUADRAX,            ELECTRICAL CONNECTOR, SPACE GRADE            100 OHM, TYPE M38999 I &amp; III, PCB</b>	
	NONE	DESIGN MANAGER	D.WILDING		SIZE C CAGE CODE 77820 SCALE: 6.0	DOCUMENT NO. 21-033397-121 REV. A REF. 21-033397-341 SHEET 1 OF 1

DOCUMENT NO. 21-033397-121  
 SHEET 1 OF 1  
 REV. A  
 C  
 B  
 A  
 VERSION 6