

REV. A	SHEET 1 OF 1	DOCUMENT NO. 21-033397-541
REVISIONS M		
LTR	DESCRIPTION	DATE
A	INITIAL RELEASE	28-Jun-2018

21-033397-541

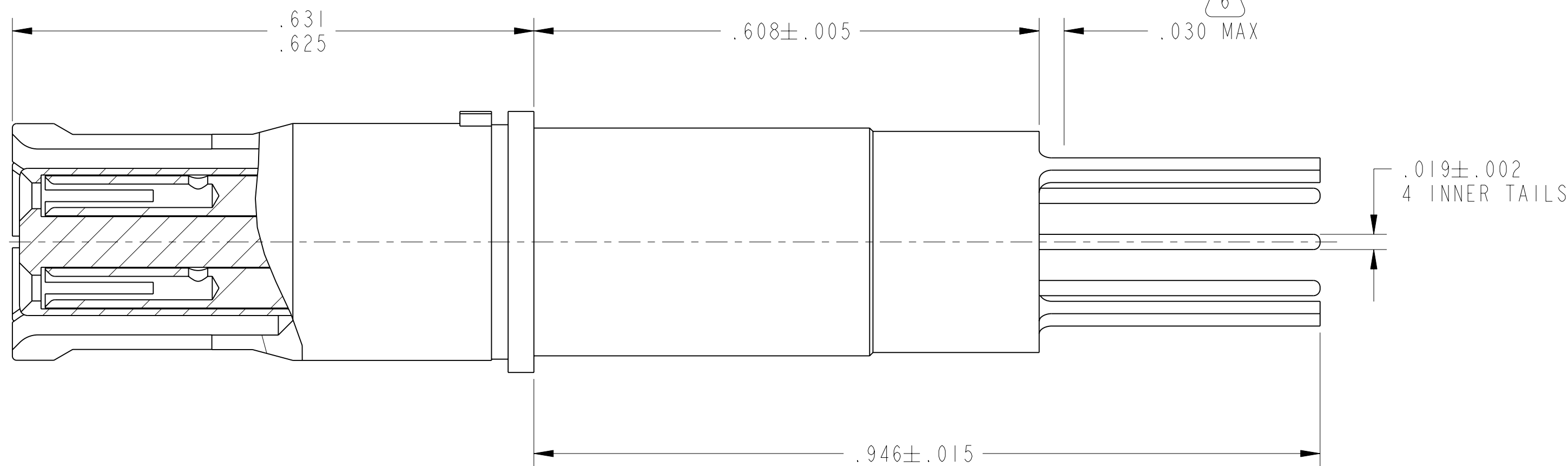
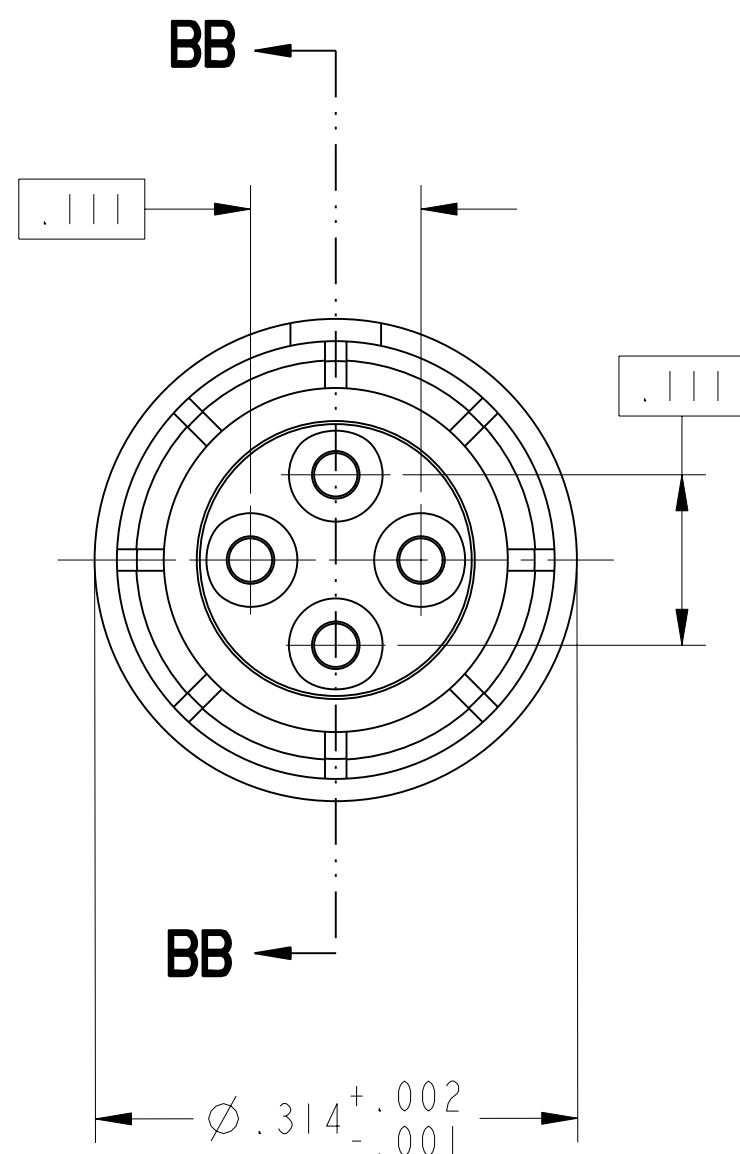
SHEET 1 OF 1

REV. A

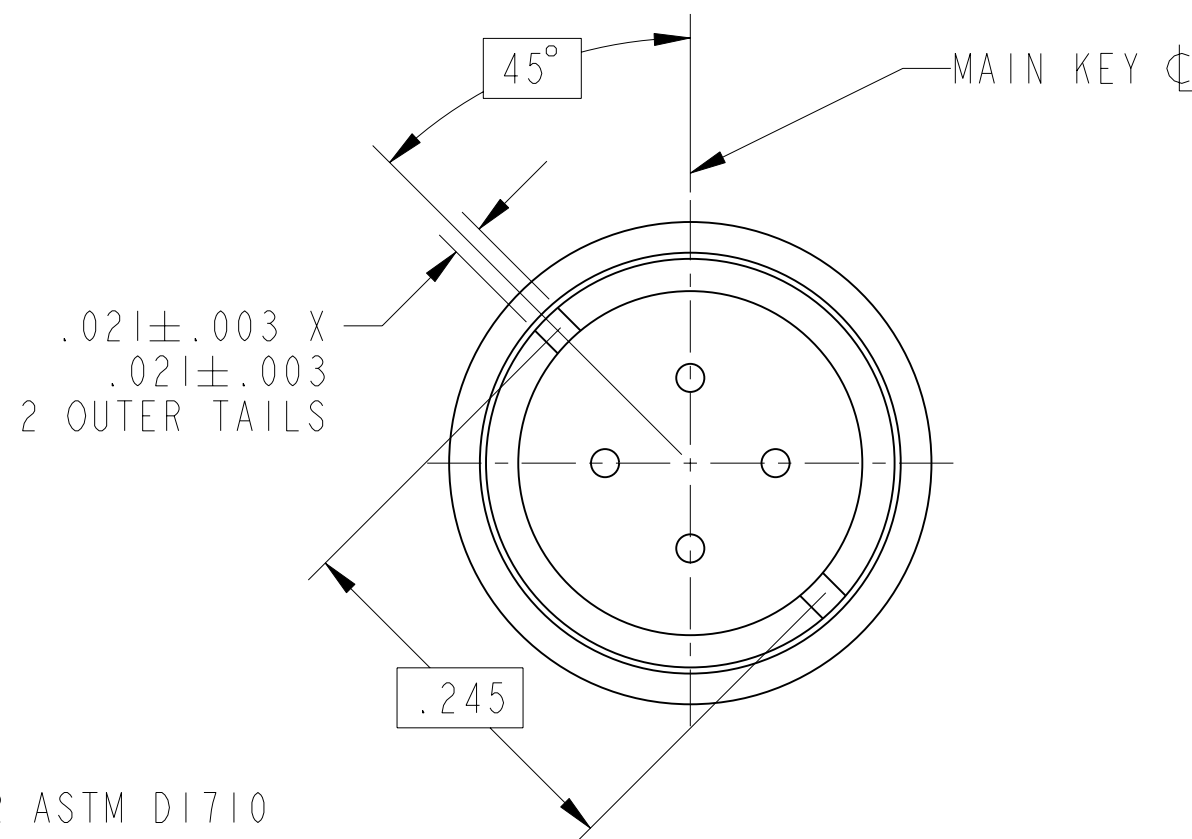
C

B

A



PARTIAL SECTION BB-BB



VIEW AT R-R

6. EPOXY MAY BE PRESENT ON CONTACT TAILS IN INDICATED AREA.

5. MATES WITH M38999 QUADRAX PINS 21-033384-( ) & OTHERS.

4. ALL DIMENSIONS ARE AFTER PLATING.

3. MATERIALS:  
 OUTER & INNER CONTACTS- BERYLLIUM COPPER PER ASTM-B-196  
 FRONT & SPACER INSULATORS- PTFE RESIN PER AMS 3651 OR PFA 340 OR ASTM D1710

2. FINISH:  
 GOLD PLATED PER MIL-G-45204 TYPE II, GRADE C, CLASS I (.000050 MIN)  
 OVER NICKEL PLATE PER QQ-N-290 (.000050 MIN).

1. CONTACTS MEET THE ENVELOPE DIMENSIONAL REQUIREMENTS OF AS39029/91.

NOTES:

THE USE OF THIS DOCUMENT IS UNLIMITED. HOWEVER, DOCUMENTS REFERENCED HEREON MAY CONTAIN LIMITED RIGHTS DATA.

10-646402-424X  
 NEXT ASSEMBLY

PRO/ENGINEER INFORMATION  
 Pro/e Model Used:  
 21-033397-541.ASSEM  
 Drawing Name:  
 21-033397-541

UNLESS OTHERWISE SPECIFIED	SPECIFICATIONS	POS	QTY	PART NUMBER	DESCRIPTION	NOTE
LINEAR DIMENSIONS ARE IN INCHES TOLERANCES: .XXXX = ±.0005 ANGLES= ±2° .XXX = ±.010 .XX = ±.03 .X = ±.1  DIM. & TOL. PER ASME Y14.5M; DRM PER MIL-STD-31000; OTHER Amphenol Stds. PER 9-3800  LEGENDS: =FLAG NOTE CALL OUT REFERENCE ONLY	MATERIAL SPEC.	APPROVALS		DATE	PARTS LIST	
	NONE	PREPARED BY	B. LEVIS	04-Jun-18	<b>AMPHENOL CORPORATION</b> 40-60 DELAWARE AVENUE SIDNEY, N.Y. 13858	
PROCESS SPEC.	DESIGN MANAGER	D. WILDING	C2		<b>CONTACT, SOCKET, QUADRAX,            ELECTRICAL CONNECTOR,            100 OHM, TYPE M38999 I &amp; III, PCB</b>	
NONE	DESIGN ACTIVITY GROUP	THIRD ANGLE PROJECTION		SCALE: 8.0	CAGE CODE	77820
				DOCUMENT NO.	21-033397-541	REV. A
				REF.	21-033397-341	SHEET 1 OF 1

VERSION 2

REVISION A

Eng PDM Information For Reference Only

REV. A

SHEET 1 OF 1

21-033397-541