

REV. A	SHEET 1 OF 1	DOCUMENT NO. 21-033397-561
REVISIONS		
LTR	DESCRIPTION	DATE
A	INITIAL RELEASE	-

21-033397-561

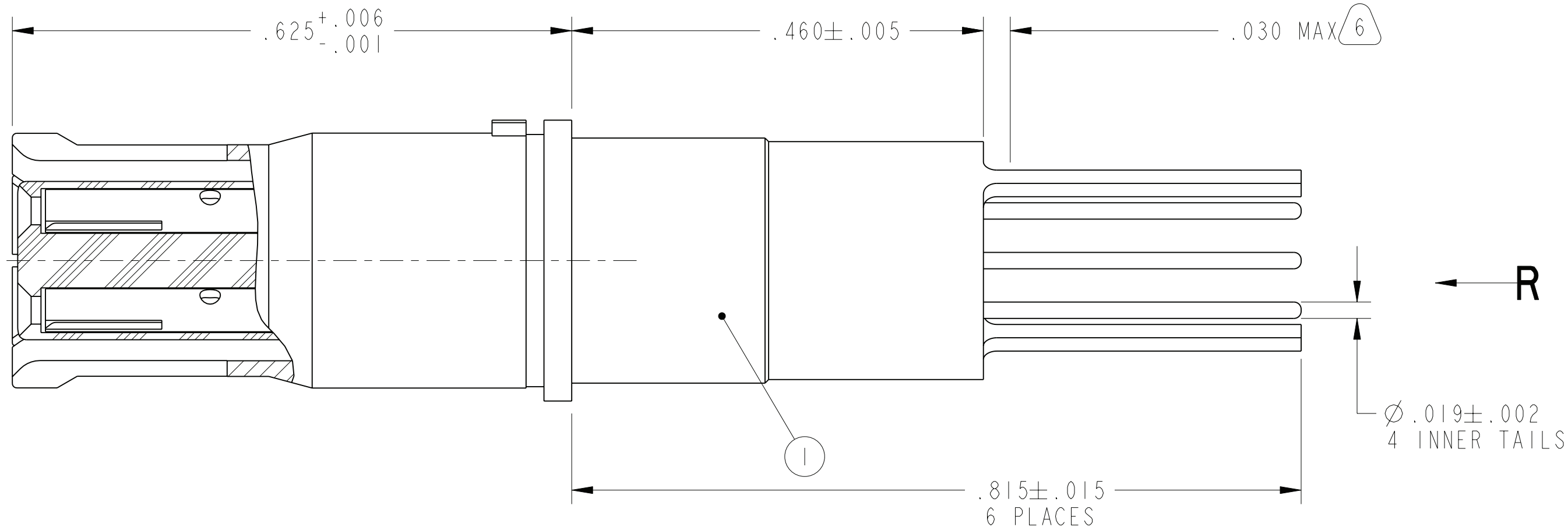
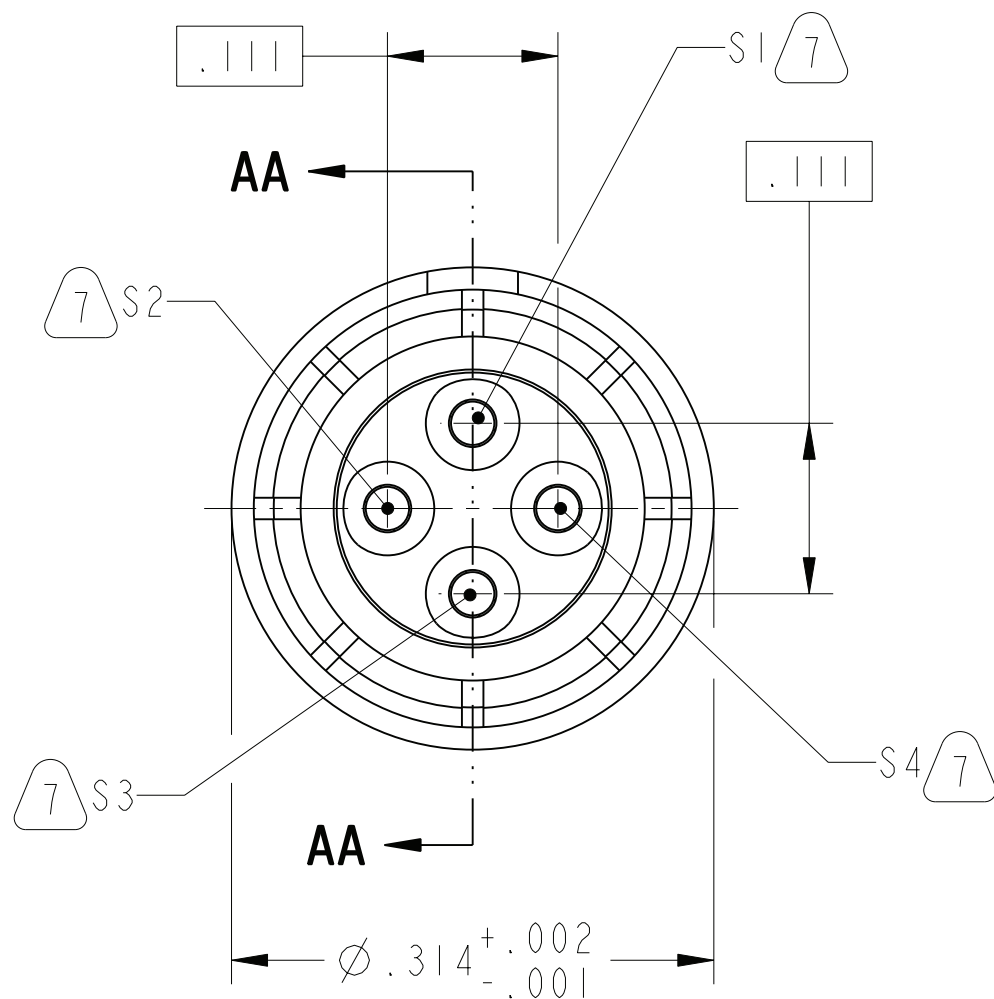
SHEET 1 OF 1

REV. A

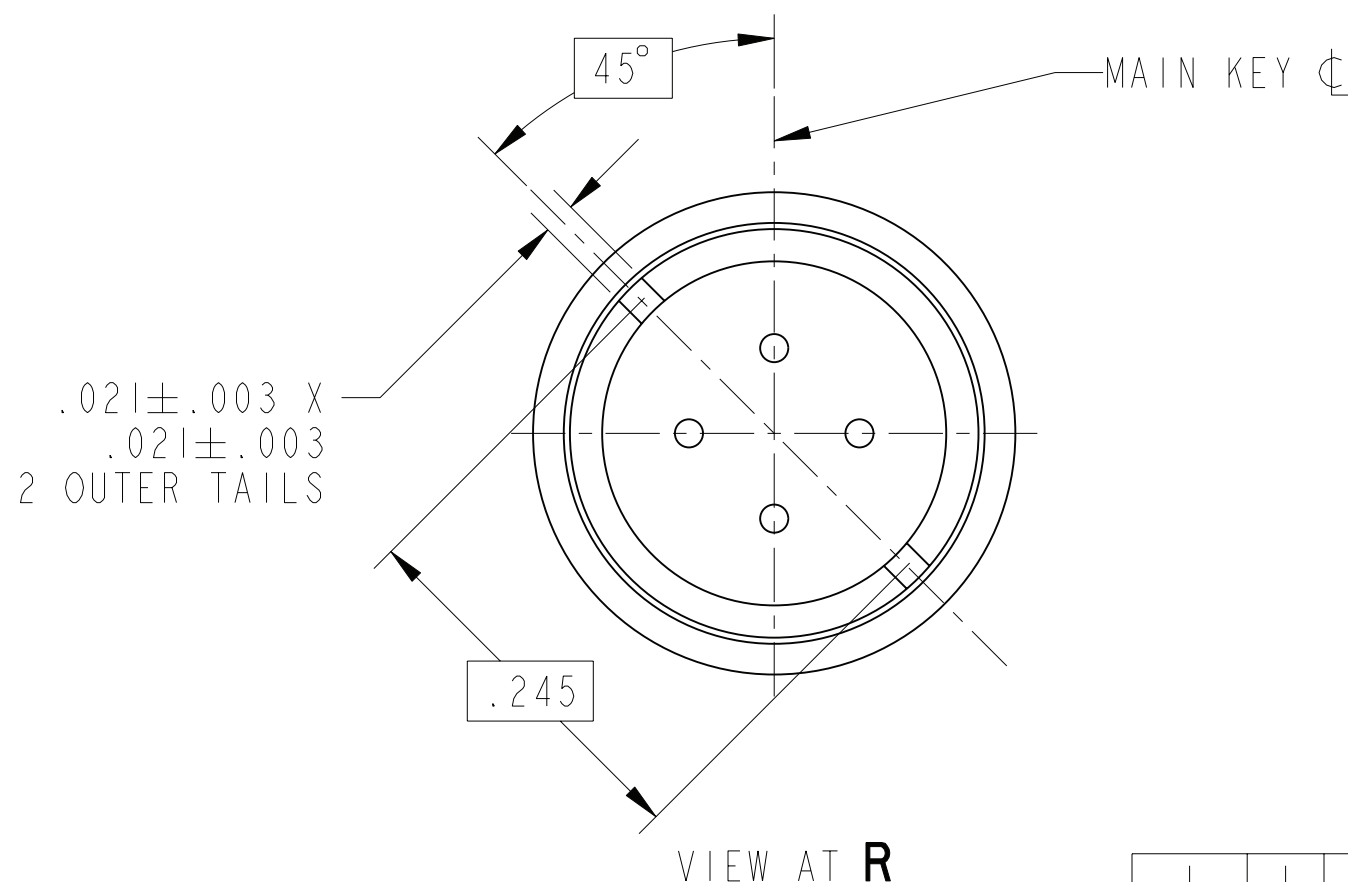
C

B

A



PARTIAL SECTION AA-AA



VIEW AT R

8. DIFFERENTIAL PAIRS:
 PAIR #1: S1-S3
 PAIR #2: S2-S4

7. AMPHENOL RECOMMENDED INNER CONTACT IDENTIFICATION NUMBERING.

6. EPOXY MAY BE PRESENT ON CONTACT TAILS IN INDICATED AREA.

5. MATES WITH M38999 QUADRAX PINS 21-033384-() AND OTHERS.

4. ALL DIMENSIONS ARE AFTER PLATING.

3. MATERIALS:
 OUTER & INNER CONTACTS- BERYLLIUM COPPER PER ASTM-B-196
 FRONT INSULATOR & SPACER INSULATOR- TFE RESIN PER AMS 3651

2. FINISH:
 GOLD PLATED PER MIL-G-45204 TYPE II, GRADE C, CLASS I (.000050 MIN)
 OVER NICKEL PLATE PER QQ-N-290 (.000050 MIN).

1. CONTACTS MEET THE ENVELOPE DIMENSIONAL REQUIREMENTS OF M39029/91.

NOTES:

THE USE OF THIS DOCUMENT IS UNLIMITED. HOWEVER, DOCUMENTS REFERENCED HEREON MAY CONTAIN LIMITED RIGHTS DATA.

10-628485-859X
 NEXT ASSEMBLY

PRO/ENGINEER INFORMATION
 Pro/e Model Used:
 21-033397-561.ASSEM
 Drawing Name:
 21-033397-561

UNLESS OTHERWISE SPECIFIED	SPECIFICATIONS
LINEAR DIMENSIONS ARE IN INCHES TOLERANCES: .XXXX = ±.0005 ANGLES= ±2° .XXX = ±.010 .XX = ±.03 .X = ±.1	MATERIAL SPEC. N/A
DIM. & TOL. PER ASME Y14.5M; DRM PER MIL-DTL-31000; OTHER Amphenol Stds. PER 9-3800	PROCESS SPEC. N/A
LEGENDS: = FLAG NOTE CALL OUT REFERENCE ONLY	

POS	QTY	21-033397-561M	CONTACT, SOCKET, QUAD, PCB	NOTE
PARTS LIST				
AMPHENOL CORPORATION 40-60 DELAWARE AVENUE SIDNEY, N.Y. 13858				
CONTACT, SOCKET, QUADRAX, ELECTRICAL CONNECTOR, 100 OHM, TYPE M38999 I & III, PCB				
SIZE	CAGE CODE	DOCUMENT NO.	REV.	
C	77820	21-033397-561	A	
SCALE: 8.0	REF. 21-033397-291	SHEET 1 OF 1		

FORMAT: C-U-E-I

RELEASED / Dec. 20 2011, 3:02:08 PM

21-033397-561

SHEET 1 OF 1

REV. A

REVISION 5

REVISION A

Eng PDM Information For Reference Only

REV. A

SHEET 1 OF 1

21-033397-561