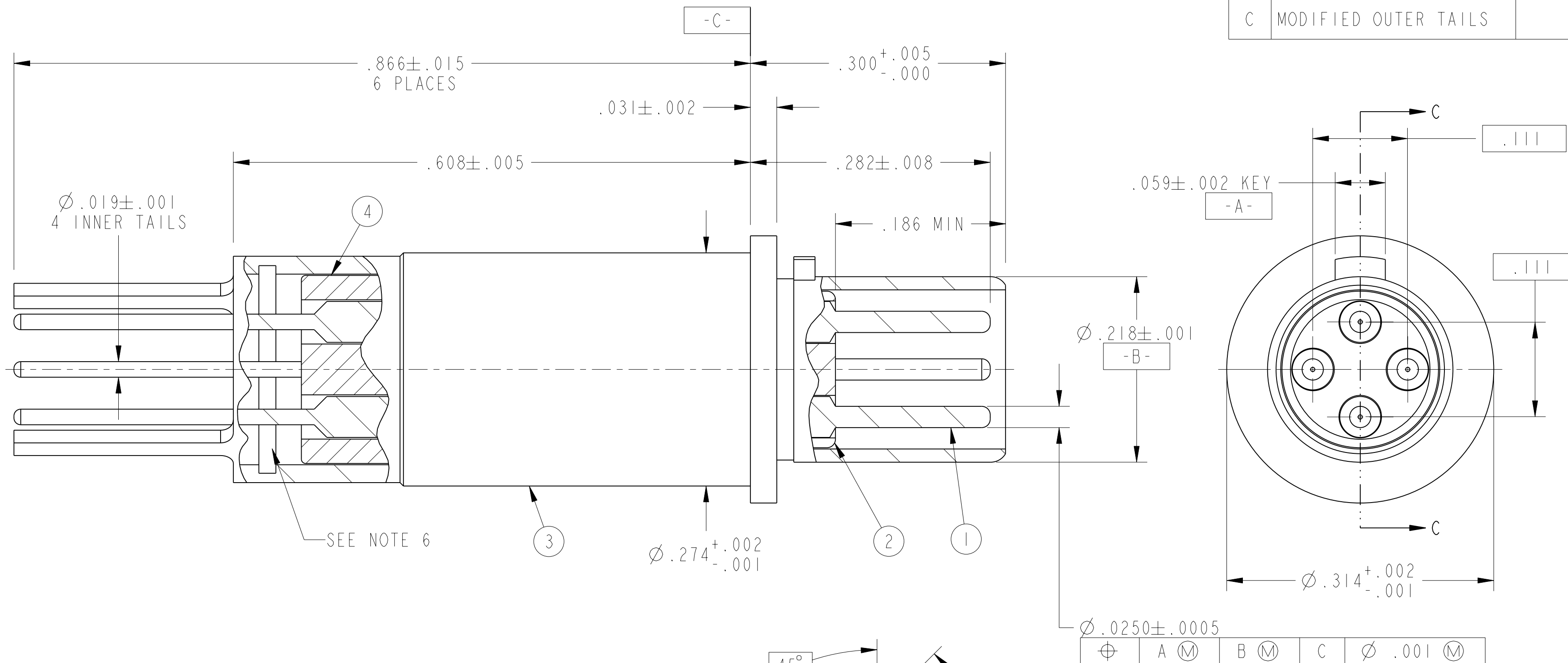


REVISIONS

LTR	DESCRIPTION	DATE
C	MODIFIED OUTER TAILS	

SECTION C-C

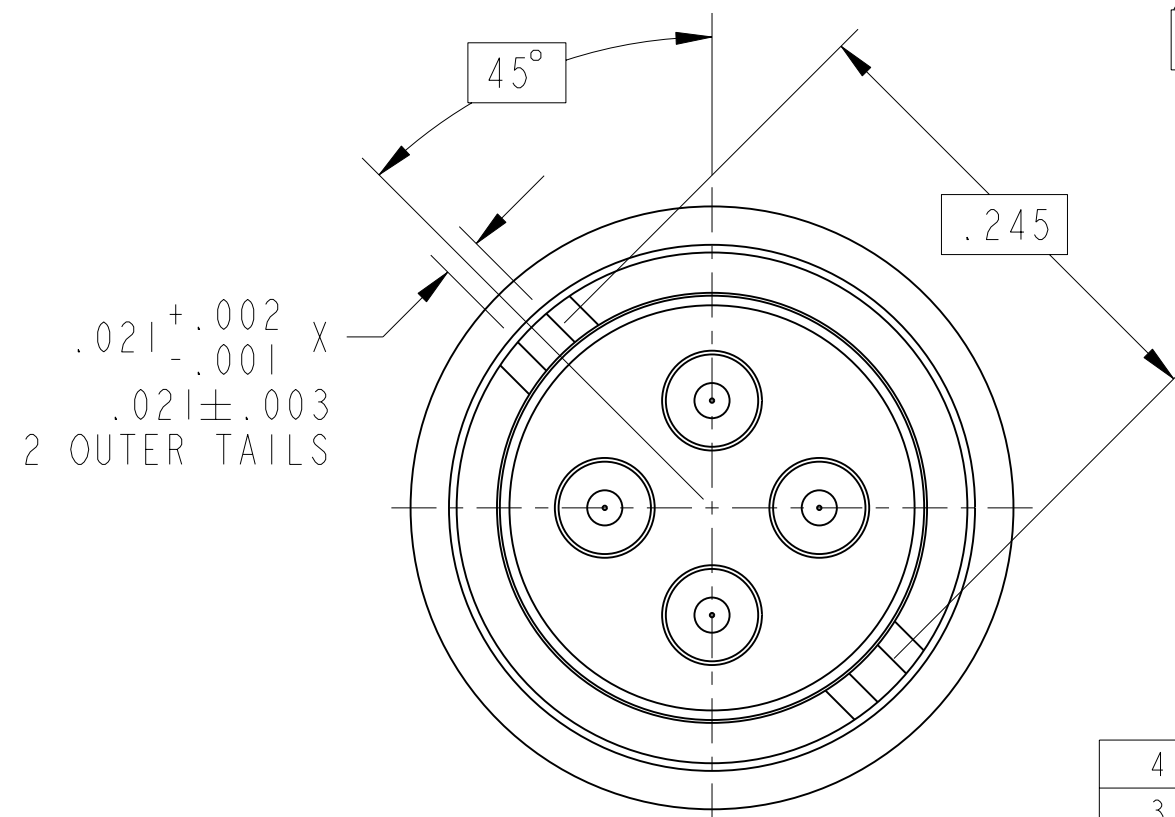


R →

- CONTACTS MEET THE ENVELOPE DIMENSIONAL REQUIREMENTS OF M39029/90.
- FINISH:
GOLD PLATED PER MIL-G-45204 TYPE II, GRADE C, CLASS I (.000050 MIN)
OVER NICKEL PLATE PER QQ-N-290 (.000050 MIN).
- MATERIALS:
OUTER & INNER CONTACTS- BERYLLIUM COPPER PER ASTM-B-196
FRONT INSULATOR & SPACER INSULATOR- TFE RESIN PER ASTM 3651
- ALL DIMENSIONS ARE AFTER PLATING.
- PROCESS SPEC: 9-4954-5
- FIXTURE THEN EPOXY FILL INDICATED AREA WITH EPOXY 9-4954-5 TO HOLD INNER COMPONENTS IN PLACE. .030 MAX EPOXY WICKING BEYOND CONTACT BODY PERMISSIBLE. CURE EPOXY AT 250°F FOR 3 HOURS.
- MATES WITH M38999 QUADRAX SOCKETS 21-33385-().

NOTES:

THE USE OF THIS DOCUMENT IS UNLIMITED. HOWEVER, DOCUMENTS REFERENCED HEREON MAY CONTAIN LIMITED RIGHTS DATA.



VIEW AT R

POS	QTY	PART NUMBER	DESCRIPTION	NOTE
4	1	21-33398-5	SPACER INSULATOR	
3	1	21-33398-34	OUTER CONTACT	
2	1	21-33398-23	FRONT INSULATOR	
1	4	21-33398-32	INNER CONTACT	

PARTS LIST

AMPHENOL CORPORATION
40-60 DELAWARE AVENUE
SIDNEY, N.Y. 13839

CONTACT, PIN, QUADRAX,
ELECTRICAL CONNECTOR,
TYPE M38999 I & III, PCB

SIZE C	CAGE CODE 77820	DOCUMENT NO. 21-33398-31	REV. C
SCALE: 10.0 REF:		SHEET 1 OF 1	

UNLESS OTHERWISE SPECIFIED	SPECIFICATIONS
LINEAR DIMENSIONS ARE IN INCHES TOLERANCES: .XXXX = ±.0005 ANGLES= ±2° .XXX = ±.010 .XX = ±.03 .X = ±.1	MATERIAL SPEC. N/A
DIM. & TOL. PER ASME Y14.5M; DRM PER MIL-DTL-31000; OTHER Amphenol Sds. PER 9-3800	PROCESS SPEC. SEE NOTE 5
LEGENDS: = FLAG NOTE CALL OUT REFERENCE ONLY	

APPROVALS	DATE
PREPARED BY LRATCHFORD	14-Apr-03
ENGINEER IN CHARGE LRATCHFORD	
DESIGN MANAGER ADAVIS	
DESIGN ACTIVITY GROUP MIL AERO	
THIRD ANGLE PROJECTION	

PRO/ENGINEER INFORMATION
Pro/e Model Used: 21-33398-31_BP_TV_QUAD_ASY_PCB_ASSEM
Drawing Name: 21-33398-31_BP_TV_QUAD_ASY_PCB

RELEASED / Apr . 21 2003, 01:58 PM