

REV. A	SHEET 1 OF 1	DOCUMENT NO. 21-033398-131
REVISIONS		
LTR	DESCRIPTION	DATE
A	INITIAL RELEASE	-

21-033398-131

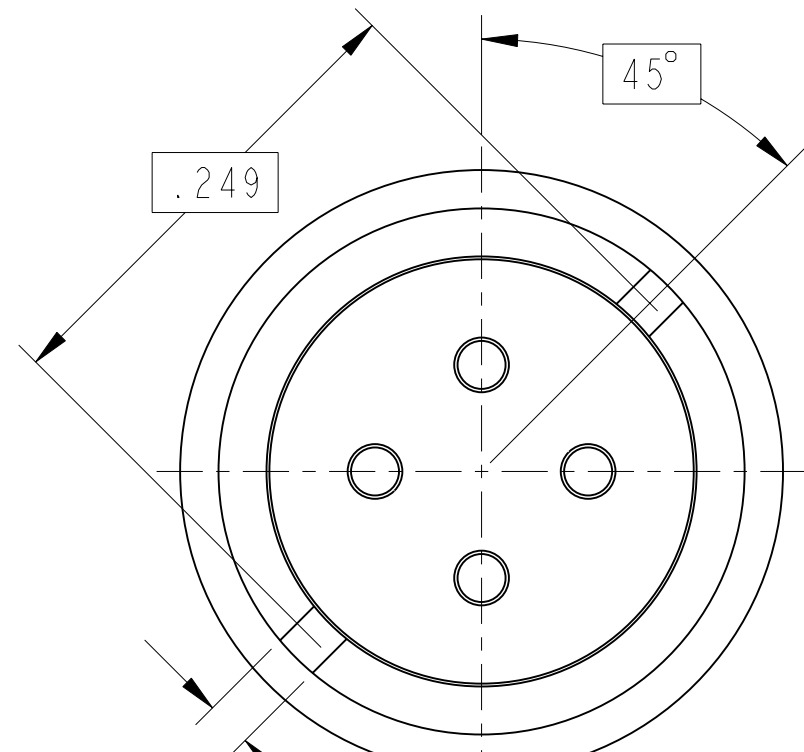
SHEET 1 OF 1

REV. A

C

B

A

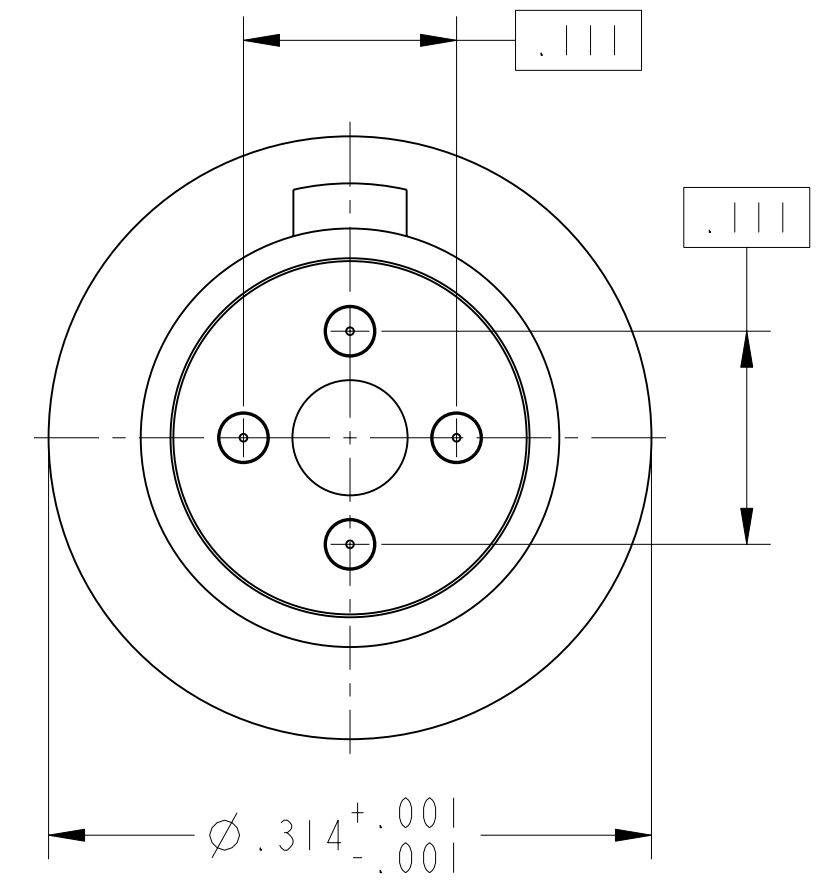
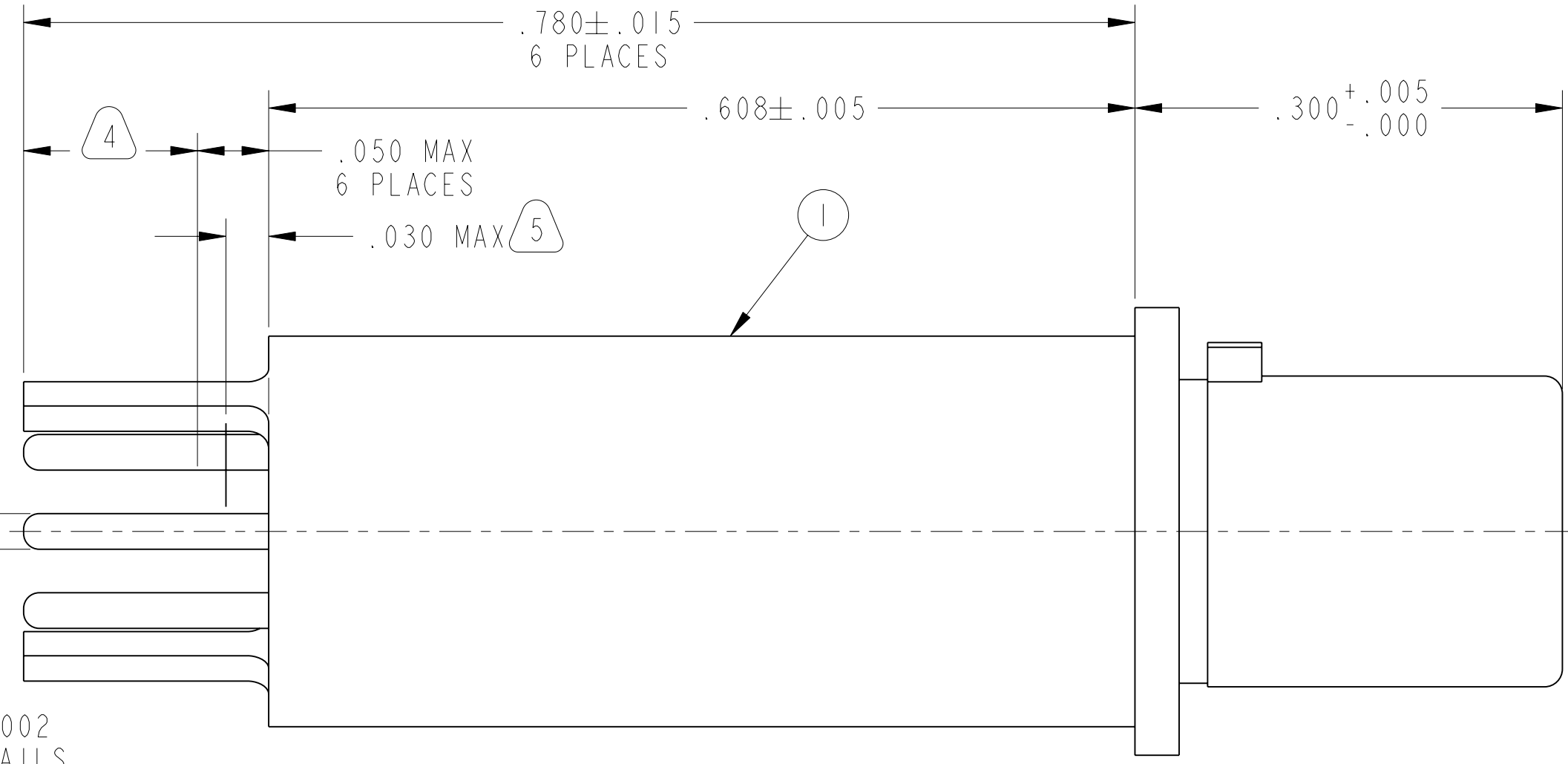


.025±.003 X
.025±.003
2 OUTER TAILS

VIEW AT R

R

∅ .025±.002
4 INNER TAILS



7. ALL DIMENSIONS ARE AFTER PLATING AND PRETINNING.
6. MATES WITH M38999 QUADRAX SOCKETS 21-033385-031 AND OTHERS.
5. EPOXY MAY BE PRESENT ON CONTACT TAILS IN INDICATED AREAS.
4. TAILS ARE PRETINNED IN INDICATED AREA.
3. MATERIALS:
OUTER & INNER CONTACTS- BERYLLIUM COPPER PER ASTM-B-196
FRONT INSULATOR & SPACER INSULATOR- TFE RESIN PER AMS 3651
2. FINISH:
GOLD PLATED PER MIL-G-45204 TYPE II, GRADE C, CLASS I (.000050 MIN)
OVER NICKEL PLATE PER QQ-N-290 (.000050 MIN).
1. CONTACTS MEET THE ENVELOPE DIMENSIONAL REQUIREMENTS OF M39029/90.

NOTES:

THE USE OF THIS DOCUMENT IS UNLIMITED.
HOWEVER, DOCUMENTS REFERENCED HEREON
MAY CONTAIN LIMITED RIGHTS DATA.

RELEASED / Feb. 13 2008, 10:12 AM

21-033398-131

SHEET 1 OF 1

N/A
NEXT ASSEMBLY

PRO/ENGINEER INFORMATION
Pro/e Model Used:
21-033398-131.ASSEM
Drawing Name:
21-033398-131

UNLESS OTHERWISE SPECIFIED
SPECIFICATIONS

LINEAR DIMENSIONS ARE IN INCHES
TOLERANCES:
.XXXX = ±.0005 ANGLES= ±2°
.XXX = ±.010
.XX = ±.03
.X = ±.1

DIM. & TOL. PER ASME Y14.5M;
DRM PER MIL-DTL-31000;
OTHER Amphenol Stds. PER 9-3800

LEGENDS:
= FLAG NOTE CALL OUT
REFERENCE ONLY

MATERIAL SPEC.
N/A

PROCESS SPEC.
N/A

I	I	21-033398-131M	CONTACT, PIN, QUADRAX, PCB	
POS	QTY	PART NUMBER	DESCRIPTION	NOTE
PARTS LIST				
AMPHENOL CORPORATION 40-60 DELAWARE AVENUE SIDNEY, N.Y. 13858				
CONTACT, PIN, QUADRAX, ELECTRICAL CONNECTOR, TYPE M38999 I & III, PCB				
SIZE	CAGE CODE	DOCUMENT NO.	REV.	
C	77820	21-033398-131	A	
SCALE: 10.0	REF. 21-33398-81	SHEET 1 OF 1		

FORMAT: C-U-E-1

21-033398-131

SHEET 1 OF 1

REV. A

C

B

A

21-033398-131