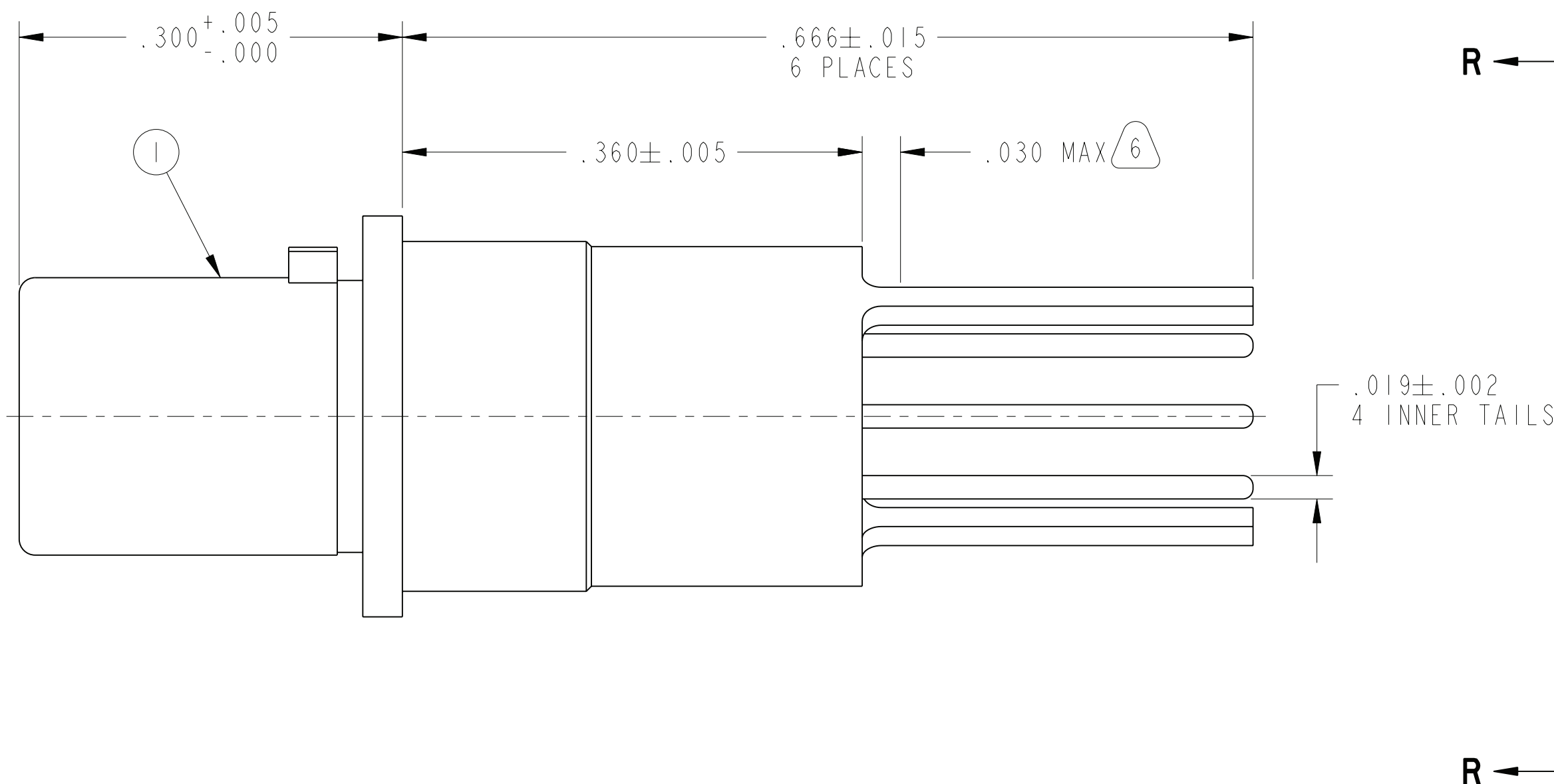
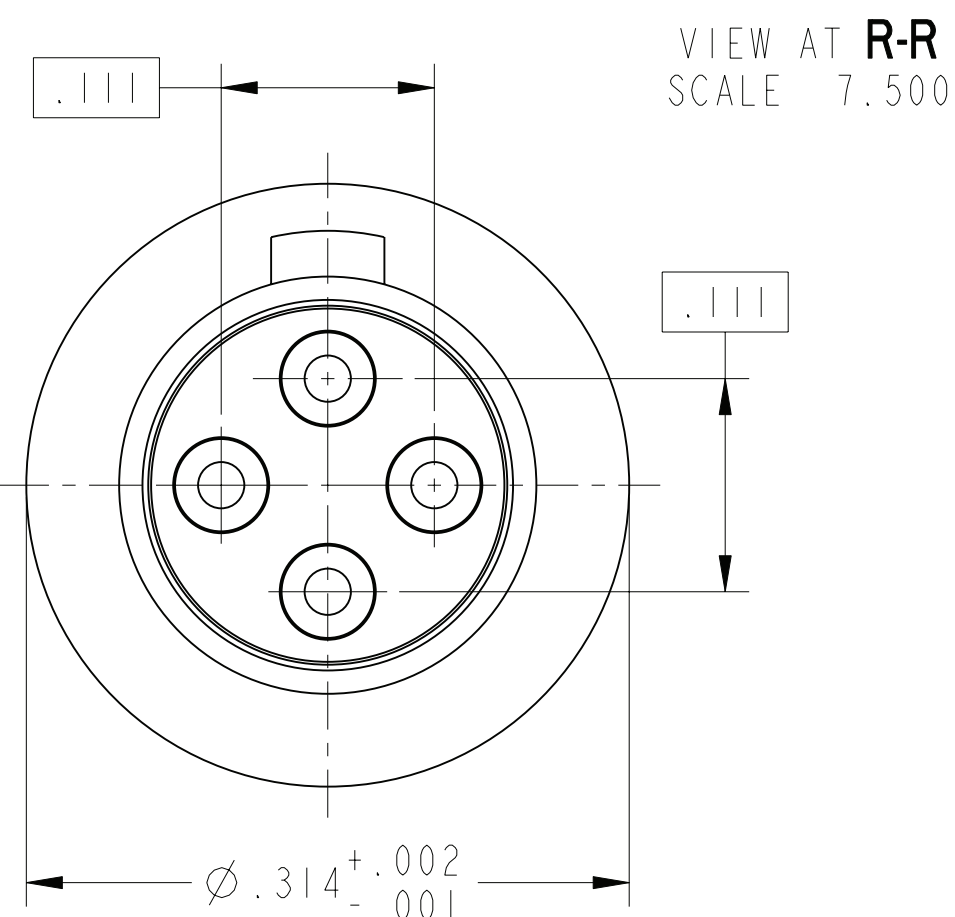
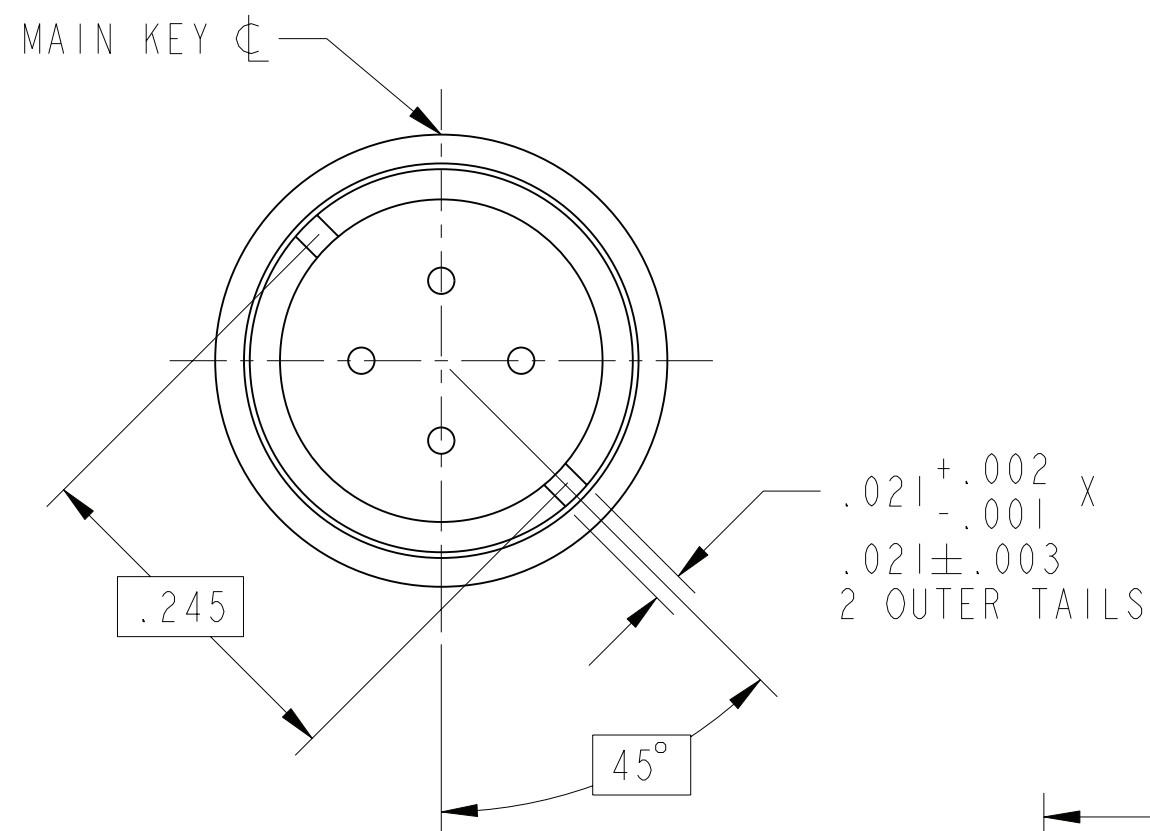


REV. A	SHEET 1 OF 1	DOCUMENT NO. 21-033398-531
REVISIONS		
LTR	DESCRIPTION	DATE
A	INITIAL RELEASE	-



6. EPOXY MAY BE PRESENT ON CONTACT TAILS IN INDICATED AREA.
5. ALL DIMENSIONS ARE AFTER PLATING.
4. MATES WITH M38999 QUADRAX SOCKETS 21-033385-051 & OTHERS.
3. MATERIALS:
 OUTER & INNER CONTACTS- BERYLLIUM COPPER PER ASTM-B-196
 FRONT INSULATOR & SPACER INSULATOR- TFE RESIN PER AMS 3651
2. FINISH:
 GOLD PLATED PER MIL-G-45204 TYPE II, GRADE C, CLASS I (.000050 MIN)
 OVER NICKEL PLATE PER QQ-N-290 (.000050 MIN).
1. CONTACTS MEET THE ENVELOPE DIMENSIONAL REQUIREMENTS OF M39029/90.

NOTES:

THE USE OF THIS DOCUMENT IS UNLIMITED. HOWEVER, DOCUMENTS REFERENCED HEREON MAY CONTAIN LIMITED RIGHTS DATA.

RELEASED / Jun . 17 2010, 1:18:28 PM

DOCUMENT NO. 21-033398-531 SHEET 1 OF 1 REV. A

10-628485-793X NEXT ASSEMBLY

PRO/ENGINEER INFORMATION
 Pro/e Model Used:
 21-033398-531.ASSEM
 Drawing Name:
 21-033398-531

UNLESS OTHERWISE SPECIFIED	SPECIFICATIONS
LINEAR DIMENSIONS ARE IN INCHES TOLERANCES: .XXXX = ±.0005 ANGLES= ±2° .XXX = ±.010 .XX = ±.03 .X = ±.1	MATERIAL SPEC. N/A
DIM. & TOL. PER ASME Y14.5M; DRM PER MIL-DTL-31000; OTHER Amphenol Stds. PER 9-3800	PROCESS SPEC. N/A
LEGENDS: =FLAG NOTE CALL OUT REFERENCE ONLY	

I POS	I QTY	21-033398-531M	CONTACT, PIN, QUADRAX, PCB	NOTE
PARTS LIST				
APPROVALS				
PREPARED BY	D. PHILLIPS	DATE	08-Jun-10	
ENGINEER IN CHARGE	L. RATCHFORD			
DESIGN MANAGER	R. SELFRIDGE			
DESIGN ACTIVITY GROUP	MIL-AERO DEVELOP			
THIRD ANGLE PROJECTION				
SIZE C	CAGE CODE 77820	DOCUMENT NO. 21-033398-531	REV. A	
SCALE: 10.0	REF. 21-033398-231	SHEET 1 OF 1		

AMPHENOL CORPORATION
 40-60 DELAWARE AVENUE
 SIDNEY, N.Y. 13858

**CONTACT, PIN, QUADRAX,
 ELECTRICAL CONNECTOR,
 TYPE M38999 I & III, PCB**

21-033398-531

SHEET 1 OF 1

REV. A

RELEASE STATE Released

REVISION A

VERSION 0

REV. A

SHEET 1 OF 1

21-033398-531