

REV. A	SHEET 1 OF 1	DOCUMENT NO. 21-033398-611
REVISIONS		
LTR	DESCRIPTION	DATE
A	INITIAL RELEASE	---

21-033398-611

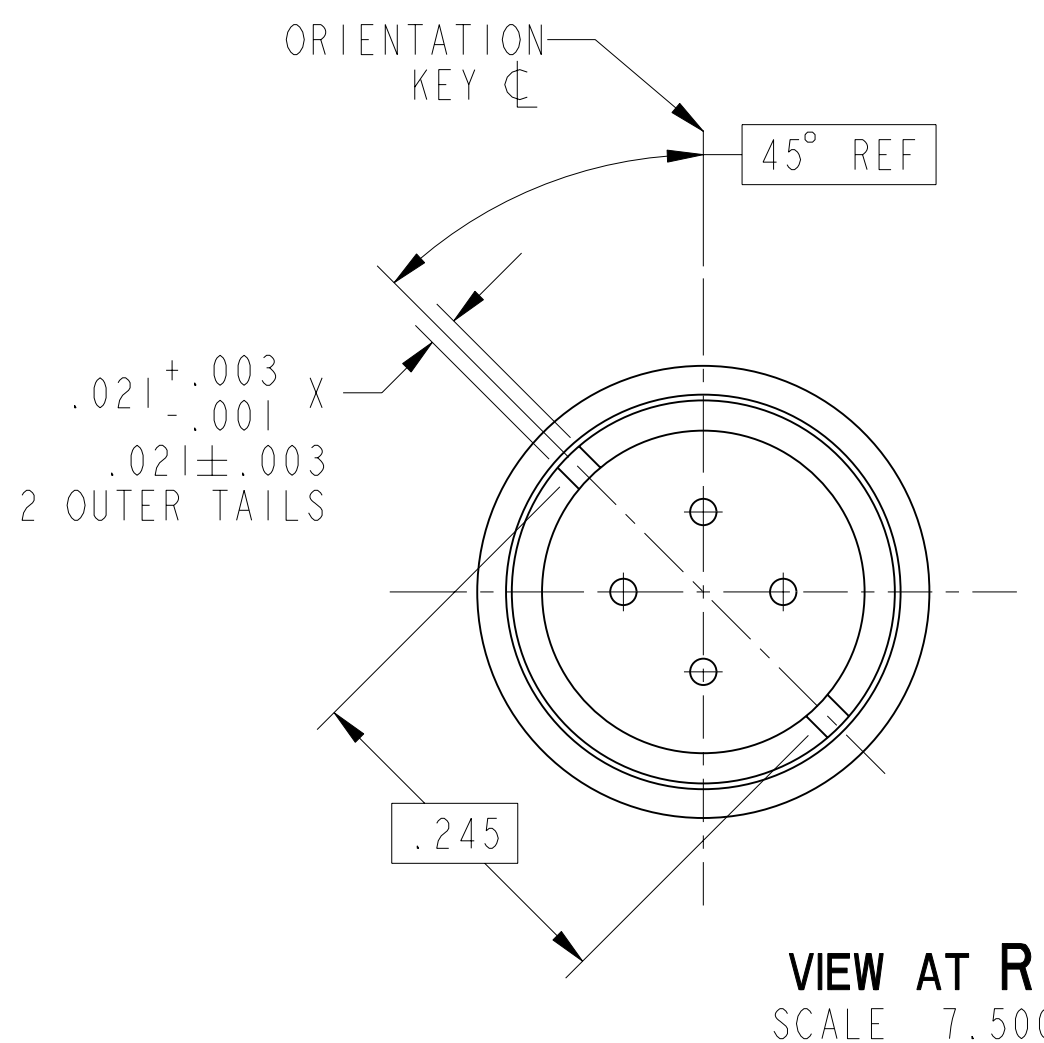
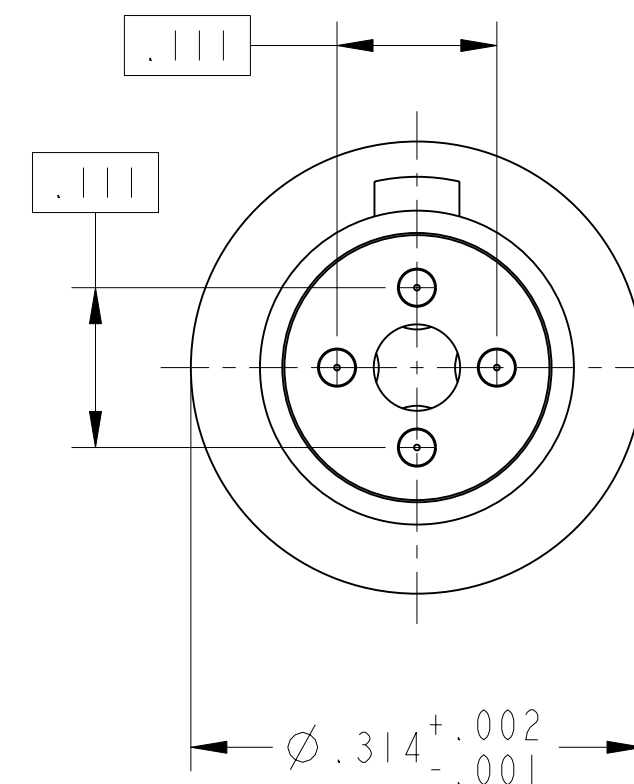
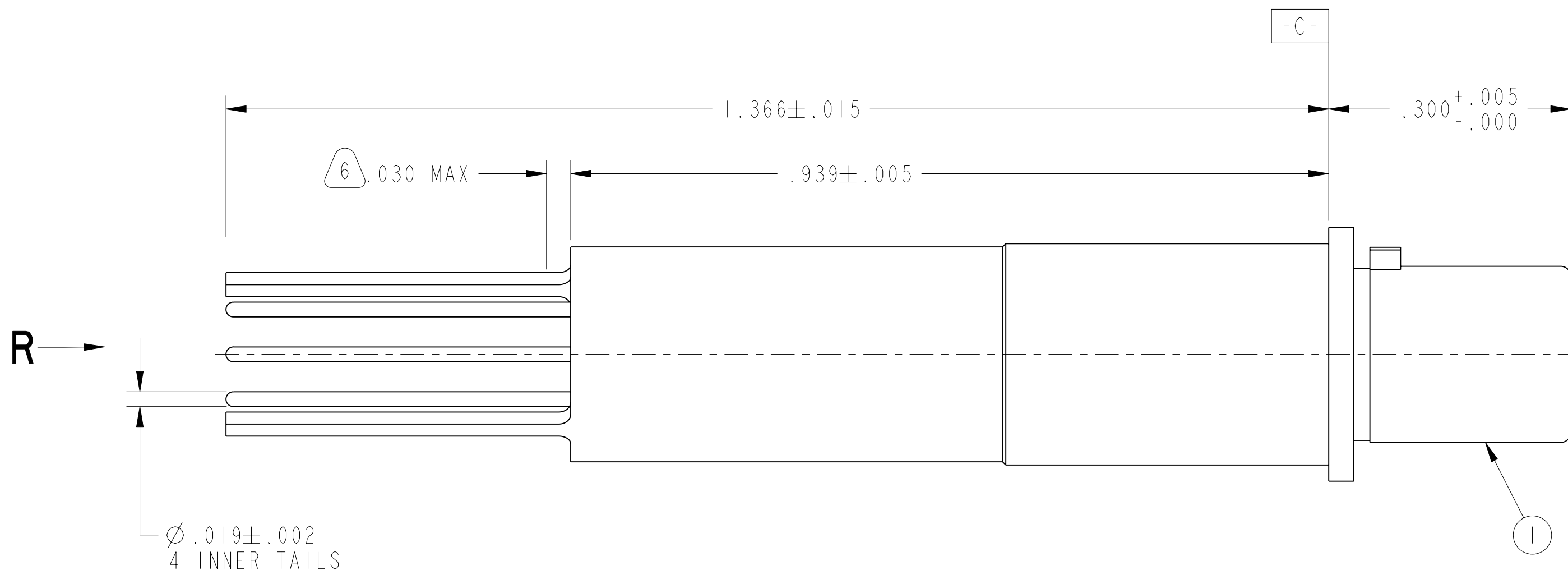
SHEET 1 OF 1

REV. A

C

B

A



VIEW AT R
SCALE 7.500

7. FOR LEAK CHECKED CONTACT ASSEMBLIES, ADD LAST CHARACTER SUFFIX TO PART NUMBER:

DESCRIPTION	SUFFIX	TEST
NOT CHECKED	<NONE>	<NONE>
10 ⁻³ CC/SEC He	-XXXZ	9-5266-111
15 PSI	-XXX Y	9-5266-110
10 PSI	-XXXW	9-5266-110, EXCEPT 10PSI
5 PSI	-XXXV	9-5266-110, EXCEPT 5 PSI

6. EPOXY MAY BE PRESENT ON CONTACT TAILS IN INDICATED AREA.

5. MATES WITH M38999 QUADRAX SOCKETS 21-033385-().

4. ALL DIMENSIONS ARE AFTER PLATING.

3. MATERIALS:

OUTER & INNER CONTACTS- BERYLLIUM COPPER PER ASTM-B-196
FRONT INSULATOR & SPACER INSULATOR- PTFE RESIN PER AMS 3651
OR PFA 340 OR ASTM D1710

2. FINISH:

GOLD PLATED PER MIL-G-45204 TYPE II, GRADE C, CLASS I (.000050 MIN)
OVER NICKEL PLATE PER QQ-N-290 (.000050 MIN).

1. CONTACTS MEET THE ENVELOPE DIMENSIONAL REQUIREMENTS OF M39029/90.

NOTES:

THE USE OF THIS DOCUMENT IS UNLIMITED. HOWEVER, DOCUMENTS REFERENCED HEREON MAY CONTAIN LIMITED RIGHTS DATA.

RELEASED / Dec. 18 2012, 2:03:24 PM
DOCUMENT NO. 21-033398-611
SHEET 1 OF 1
REV. A

N/A
NEXT ASSEMBLY

PRO/ENGINEER INFORMATION
Pro/e Model Used:
21-033398-611.ASSEM
Drawing Name:
21-033398-611

UNLESS OTHERWISE SPECIFIED	SPECIFICATIONS
LINEAR DIMENSIONS ARE IN INCHES TOLERANCES: .XXXX = ±.0005 ANGLES= ±2° .XXX = ±.010 .XX = ±.03 .X = ±.1	MATERIAL SPEC. N/A
DIM. & TOL. PER ASME Y14.5M; DRM PER MIL-DTL-31000; OTHER Amphenol Stds. PER 9-3800	PROCESS SPEC. N/A
LEGENDS: = FLAG NOTE CALL OUT REFERENCE ONLY	

I	I	21-033398-611M	CONTACT, PIN, QUADRAX, PCB	
POS	QTY	PART NUMBER	DESCRIPTION	NOTE
PARTS LIST				
AMPHENOL CORPORATION 40-60 DELAWARE AVENUE SIDNEY, N.Y. 13858				
CONTACT, PIN, QUADRAX, ELECTRICAL CONNECTOR. 100 OHM, M38999 I & III, PCB				
SIZE C	CAGE CODE 77820	DOCUMENT NO. 21-033398-611	REV. A	
SCALE: 7.5	REF. 21-033398-661	SHEET 1 OF 1		

RELEASE STATE Released
REVISION A
VERSION 2
DOCUMENT NO. 21-033398-611
SHEET 1 OF 1