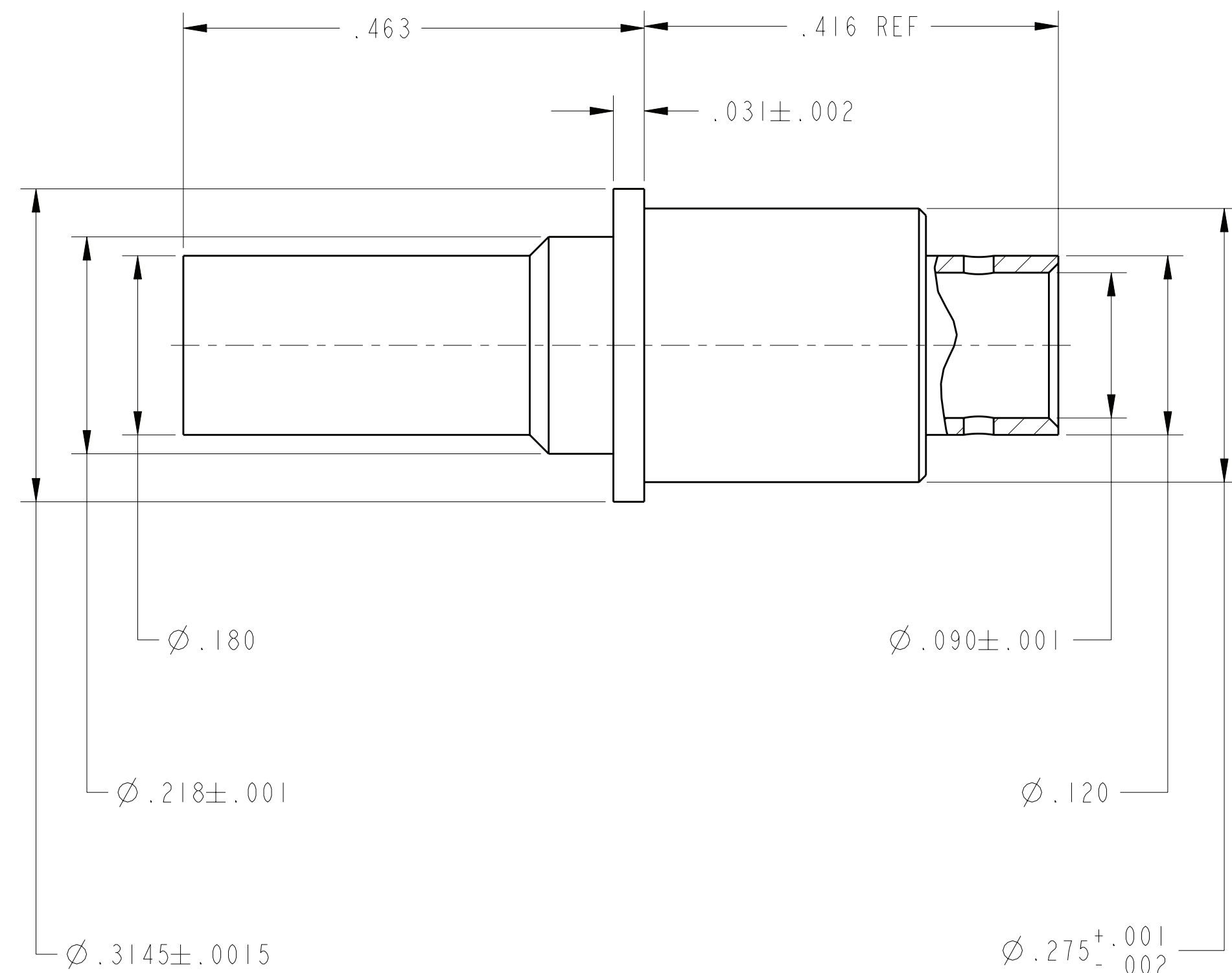


REV. A	DOCUMENT NO. 21-033448-02HF	
SHEET 1 OF 1		
REVISIONS		
LTR	DESCRIPTION	DATE
A	INITIAL RELEASE	



2. WHEN USED IN AN MIL-DTL-38999 CONNECTOR, THIS CONTACT INCORPORATES PIGGYBACK GROMMET SEAL 21-33321-7. ASSEMBLE SEAL OVER CABLE JACKET, RUBBER END FIRST, BEFORE STRIPPING THE CABLE. AFTER INSERTING THE TERMINATED CONTACT INTO THE CONNECTOR INSERT CAVITY, SLIDE THE SEAL INTO THE CONNECTOR GROMMET OPENING. SEAL MUST BE PURCHASED SEPARATELY.

- 1. MATERIAL:
 - BODY: STAINLESS STEEL PER AMS 5640, ALLOY UNS S30300, TYPE 1
 - FERRULE: BRASS PER ASTM B16 ALLOY UNS NO. C36000
 - CONTACT: BERYLLIUM COPPER PER ASTM B196, ALLOY NO. UNS C17300, TD04
 - INSULATOR: PTFE PER ASTM D1710, TYPE 1, GRADE 1, CLASS B
 - FINISH:
 - BODY: PASSIVATED PER AMS-2700, TYPE 2
 - CONTACT & FERRULE: GOLD PER ASTM B488, TYPE II, CODE C, CLASS 1.27; OVER NICKEL PER AMS-QQ-N-290, CLASS 1, .00005" MIN.

PERFORMANCE:
 IMPEDANCE: 50 OHMS
 FREQ. RANGE: DC TO 18 GHZ
 VSWR: 1.25:1 MAX. MATED PAIR DC TO 18 GHZ
 INSERTION LOSS: .06 X SQRT(F(F IN GHZ))
 DWV: 1000 VRMS
 OPERATING TEMP: -55°C TO +125°C

NOTES:

THE USE OF THIS DOCUMENT IS UNLIMITED. HOWEVER, DOCUMENTS REFERENCED HEREON MAY CONTAIN LIMITED RIGHTS DATA.

N/A
 NEXT ASSEMBLY

PRO/ENGINEER INFORMATION
 Pro/e Model Used:
 21-033448_DUMMY-2-4-5.PART
 Drawing Name:
 21-033448-02HF

UNLESS OTHERWISE SPECIFIED	SPECIFICATIONS
LINEAR DIMENSIONS ARE IN INCHES TOLERANCES: .XXXX = ±.0005 ANGLES= ±2° .XXX = ±.010 .XX = ±.03 .X = ±.1	MATERIAL SPEC. N/A
DIM. & TOL. PER ASME Y14.5M; DRM PER MIL-DTL-31000; OTHER Amphenol Stds. PER 9-3800	PROCESS SPEC. N/A
LEGENDS: = FLAG NOTE CALL OUT REFERENCE ONLY	

I	I	21-033448-02M	CONTACT ASSEMBLY	
POS	QTY	PART NUMBER	DESCRIPTION	NOTE
PARTS LIST				
APPROVALS PREPARED BY RATCHFORD ENGINEER IN CHARGE RATCHFORD DESIGN MANAGER SHEPLER DESIGN ACTIVITY GROUP MIL-AERO-DEVELOP DATE 31-Mar-10 THIRD ANGLE PROJECTION				
AMPHENOL CORPORATION 40-60 DELAWARE AVENUE SIDNEY, N.Y. 13856 18 GHZ BMZ PIN, FOR TFLEX-405 CABLE, FOR M38999 SIZE 8 CAVITY				
SIZE C	CAGE CODE 77820	DOCUMENT NO. 21-033448-02HF	REV. A	
SCALE: 4.0	REF. 21-033448-05HF	SHEET 1 OF 1		

21-033448-02HF

SHEET 1 OF 1

REV. A

C

B

A

21-033448-02HF

4

D

C

REV. A

REV. A

RELEASE STATE WIP

REV. A

SHEET 1 OF 1

21-033448-02HF

1