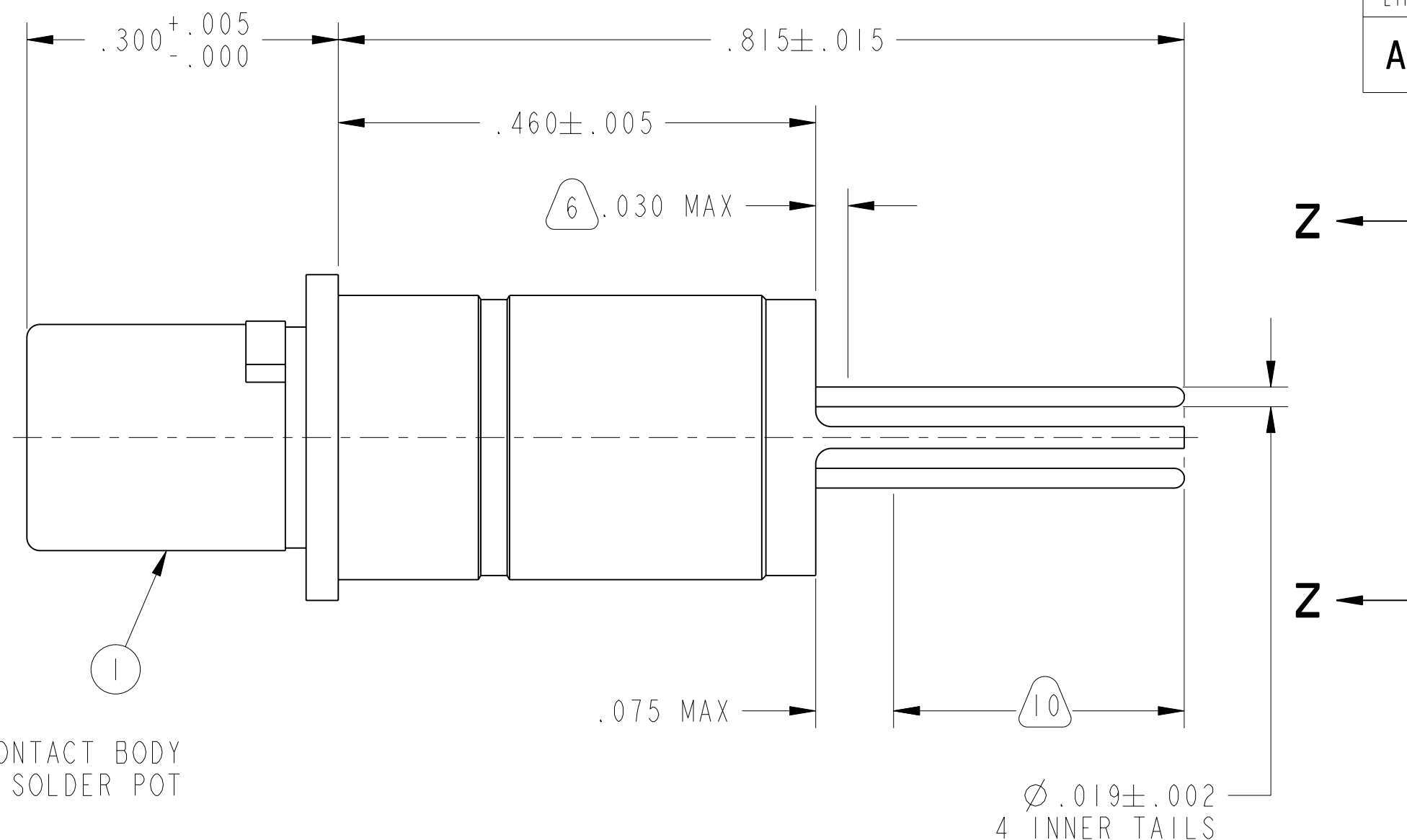
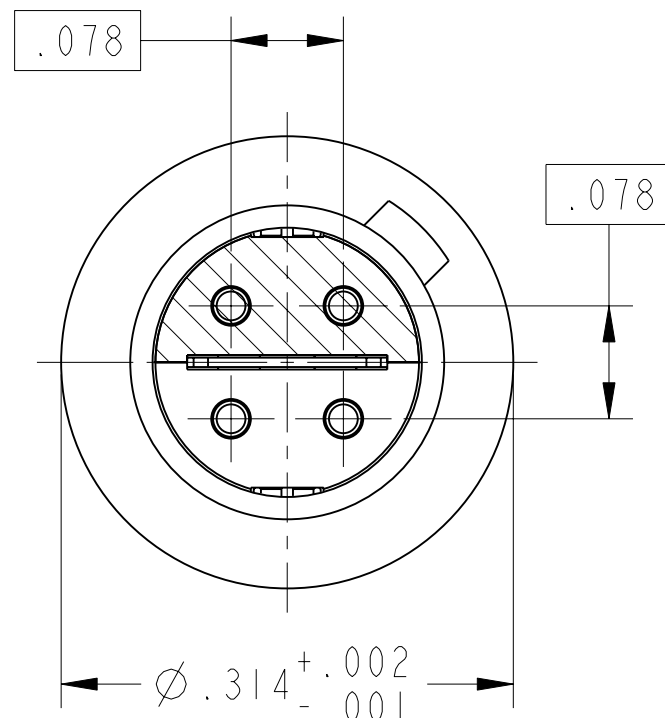


REV. A		DOCUMENT NO. 21-033466-031
SHEET 1 OF 1		REVISIONS
LTR	DESCRIPTION	DATE
A	INITIAL RELEASE	-



10. PRETIN INDICATED AREA TO WITHIN .075 MAX OF THE CONTACT BODY PER 9-7894 (PRETINNING IN NITROGEN INSERTING WAVE SOLDER POT RECOMMENDED)

9. DIFFERENTIAL PAIRS:  
 PAIR #1: P1-P4 (T1-T4)  
 PAIR #2: P2-P3 (T2-T3)

8. INTERNAL ELECTRICAL CONNECTIONS:  
 P1-T1, P2-T2, P3-T3, P4-T4

7. FOR LEAK CHECKED CONTACT ASSEMBLIES, ADD LAST CHARACTER SUFFIX TO PART NUMBER:

DESCRIPTION	SUFFIX	TEST
NOT CHECKED	<NONE>	<NONE>
10 <sup>-3</sup> CC/SEC He	-XXXZ	9-5266-111
15 PSI	-XXXY	9-5266-110
10 PSI	-XXXW	9-5266-110, EXCEPT 10PSI
5 PSI	-XXXV	9-5266-110, EXCEPT 5 PSI

6. EPOXY MAY BE PRESENT ON CONTACT TAILS IN INDICATED AREA.

5. ALL DIMENSIONS ARE AFTER PLATING

4. MATES WITH M38999 QUADRAX SOCKETS 21-033471-( ) & OTHERS.

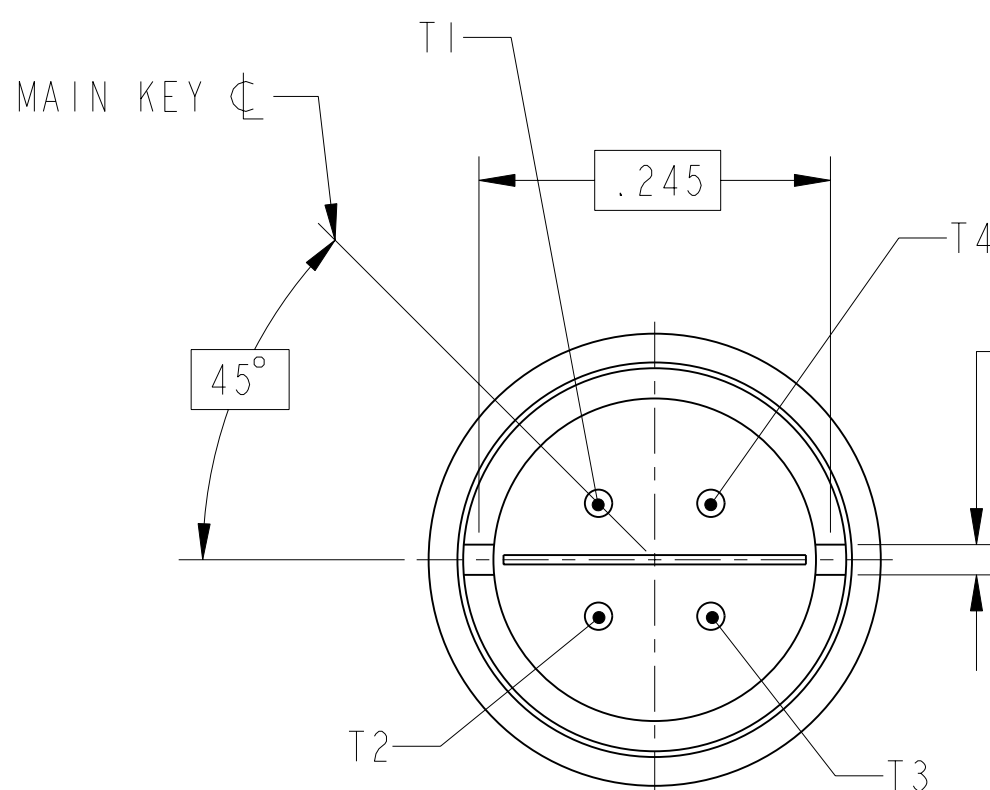
3. MATERIALS:  
 OUTER & INNER CONTACTS- BERYLLIUM COPPER PER ASTM-B-196  
 INSULATORS & RETAINER- POLYETHERIMIDE

2. FINISH:  
 GOLD PLATED PER ASTM B488, TYPE II, CODE C, CLASS 1.27 (.000050 MIN)  
 OVER NICKEL PLATE PER AMS-QQ-N-290 (.000050 MIN).

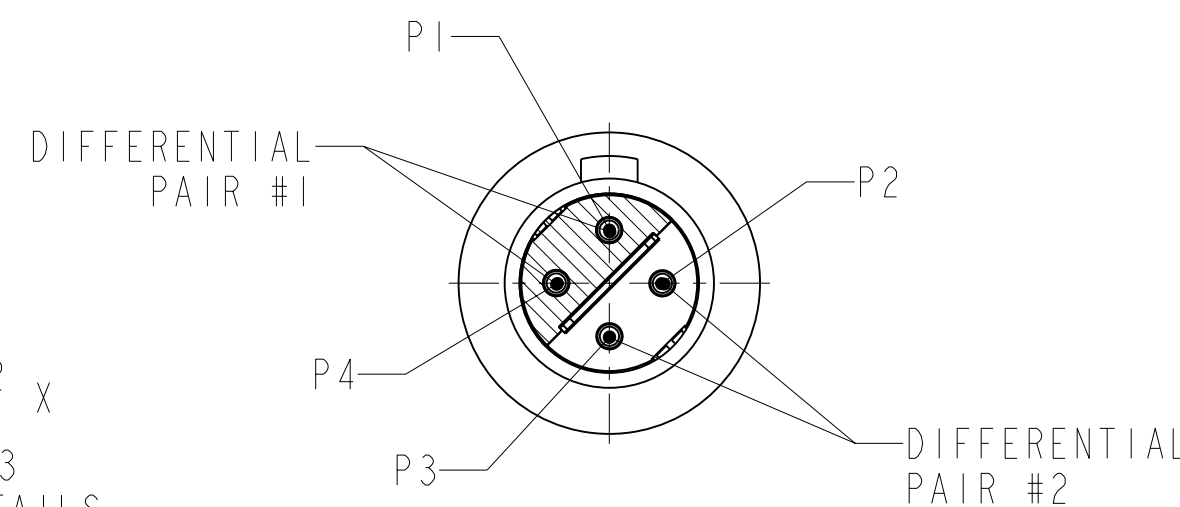
1. CONTACTS MEET THE ENVELOPE DIMENSIONAL REQUIREMENTS OF M39029/90.

NOTES:

THE USE OF THIS DOCUMENT IS UNLIMITED. HOWEVER, DOCUMENTS REFERENCED HEREON MAY CONTAIN LIMITED RIGHTS DATA.



VIEW AT Z-Z  
SCALE 7.500



MATING FACE VIEW  
SCALE 5.000

UNLESS OTHERWISE SPECIFIED		SPECIFICATIONS	
LINEAR DIMENSIONS ARE IN INCHES TOLERANCES: .XXXX = ±.0005 ANGLES= ±2° .XXX = ±.010 .XX = ±.03 .X = ±.1		MATERIAL SPEC. N/A	
DIM. & TOL. PER ASME Y14.5M; DRM PER MIL-DTL-31000; OTHER Amphenol Stds. PER 9-3800		PROCESS SPEC. 9-7894	
LEGENDS: =FLAG NOTE CALL OUT REFERENCE ONLY		APPROVALS PREPARED BY J. BORDEAU ENGINEER IN CHARGE D. PHILLIPS DESIGN MANAGER E. HICKEY DESIGN ACTIVITY GROUP C-1	
THIRD ANGLE PROJECTION		DATE 02-May-12	
PARTS LIST		AMPHENOL CORPORATION 40-60 DELAWARE AVENUE SIDNEY, N.Y. 13858	
CONTACT ASSEMBLY		CONTACT, PIN, QUADRAX, ELECTRICAL CONNECTOR, TYPE D38999 I & III, 10G DESIGN, PCB	
POS	QTY	PART NUMBER	DESCRIPTION
I	I	21-033466-021M	CONTACT ASSEMBLY
SIZE C		CAGE CODE 77820	DOCUMENT NO. 21-033466-031
SCALE: 7.5		REF. 21-033466-071	SHEET 1 OF 1

N/A	PRO/ENGINEER INFORMATION Pro/e Model Used: 21-033466-031.ASSEM Drawing Name: 21-033466-031
-----	--

NEXT ASSEMBLY

RELEASED / May . 21 2012, 3:06:54 PM

DOCUMENT NO. 21-033466-031

SHEET 1 OF 1

REV. A