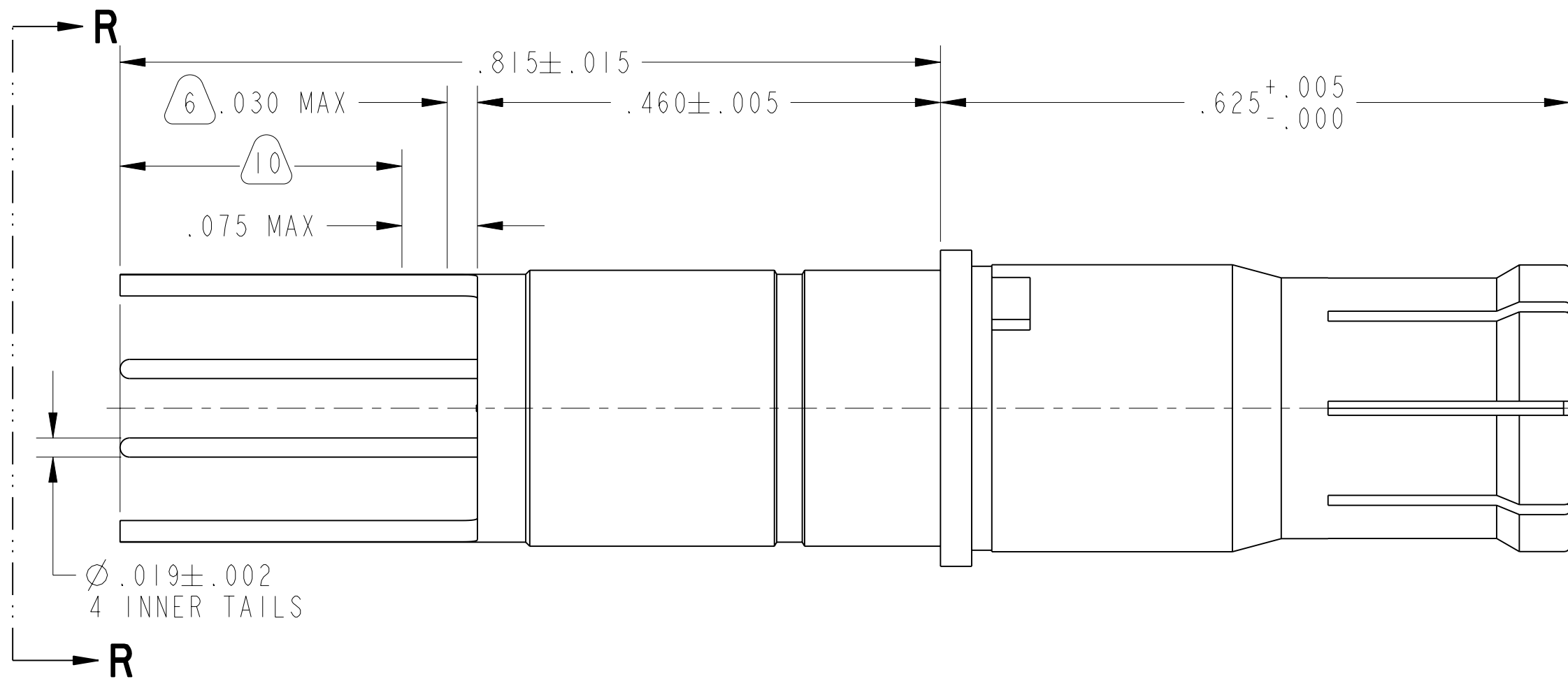
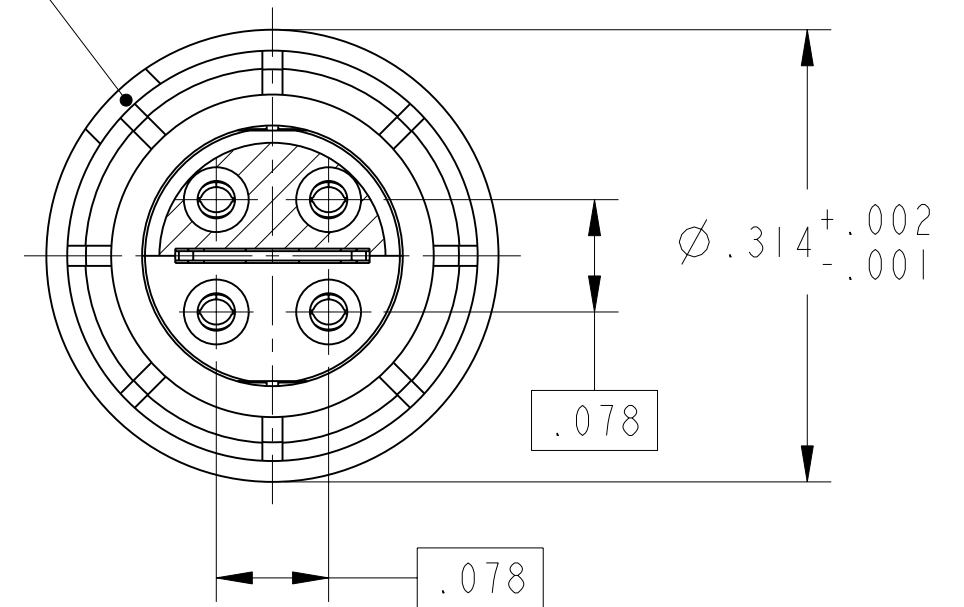


REV. A	SHEET 1 OF 1	DOCUMENT NO. 21-033467-031
REVISIONS		
LTR	DESCRIPTION	DATE
A	INITIAL RELEASE	-



ORIENTATION KEY



10. PRETIN INDICATED AREA TO WITHIN .075 MAX OF THE CONTACT BODY PER 9-7894 (PRETINNING IN NITROGEN INSERTING WAVE SOLDER POT RECOMMENDED)

9. DIFFERENTIAL PAIRS:  
PAIR #1: S1-S4 (T1-T4)  
PAIR #2: S2-S3 (T2-T3)

8. INTERNAL ELECTRICAL CONNECTIONS:  
S1-T1, S2-T2, S3-T3, S4-T4

7. FOR LEAK CHECKED CONTACT ASSEMBLIES, ADD LAST CHARACTER SUFFIX TO PART NUMBER:

DESCRIPTION	SUFFIX	TEST
NOT CHECKED	<NONE>	<NONE>
10 <sup>-3</sup> CC/SEC He	-XXXZ	9-5266-111
15 PSI	-XXXY	9-5266-110
10 PSI	-XXXW	9-5266-110, EXCEPT 10PSI
5 PSI	-XXXV	9-5266-110, EXCEPT 5 PSI

6. EPOXY MAY BE PRESENT ON CONTACT TAILS IN INDICATED AREA.

5. MATES WITH D38999 QUADRAX PINS 21-033470-( ) & OTHERS.

4. ALL DIMENSIONS ARE AFTER PLATING

3. MATERIALS:  
OUTER & INNER CONTACTS- BERYLLIUM COPPER PER ASTM-B-196  
SHIELD FERRULE- BRASS PER ASTM B453 OR QQ-B-626  
INSULATORS & RETAINERS- POLYETHERIMIDE

2. FINISH:  
GOLD PLATED PER ASTM B488, TYPE II, CODE C, CLASS 1.27 (.000050 MIN)  
OVER NICKEL PLATE PER AMS-QQ-N-290 (.000050 MIN).

1. CONTACTS MEET THE ENVELOPE DIMENSIONAL REQUIREMENTS OF M39029/91.

NOTES:

THE USE OF THIS DOCUMENT IS UNLIMITED. HOWEVER, DOCUMENTS REFERENCED HEREON MAY CONTAIN LIMITED RIGHTS DATA.

RELEASED / May . 21 2012, 3:09:02 PM

DOCUMENT NO. 21-033467-031

SHEET 1 OF 1

REV. A

N/A

NEXT ASSEMBLY

PRO/ENGINEER INFORMATION

Pro/e Model Used:  
21-033467-031.ASSEM  
Drawing Name:  
21-033467-031

UNLESS OTHERWISE SPECIFIED

LINEAR DIMENSIONS ARE IN INCHES  
TOLERANCES:  
.XXXX = ±.0005 ANGLES= ±2°  
.XXX = ±.010  
.XX = ±.03  
.X = ±.1

DIM. & TOL. PER ASME Y14.5M;  
DRM PER MIL-DTL-31000;  
OTHER Amphenol Stds. PER 9-3800

LEGENDS:  
=FLAG NOTE CALL OUT REFERENCE ONLY

SPECIFICATIONS

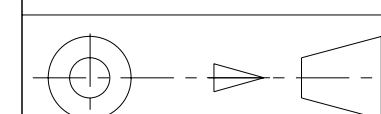
MATERIAL SPEC.  
N/A

PROCESS SPEC.  
N/A

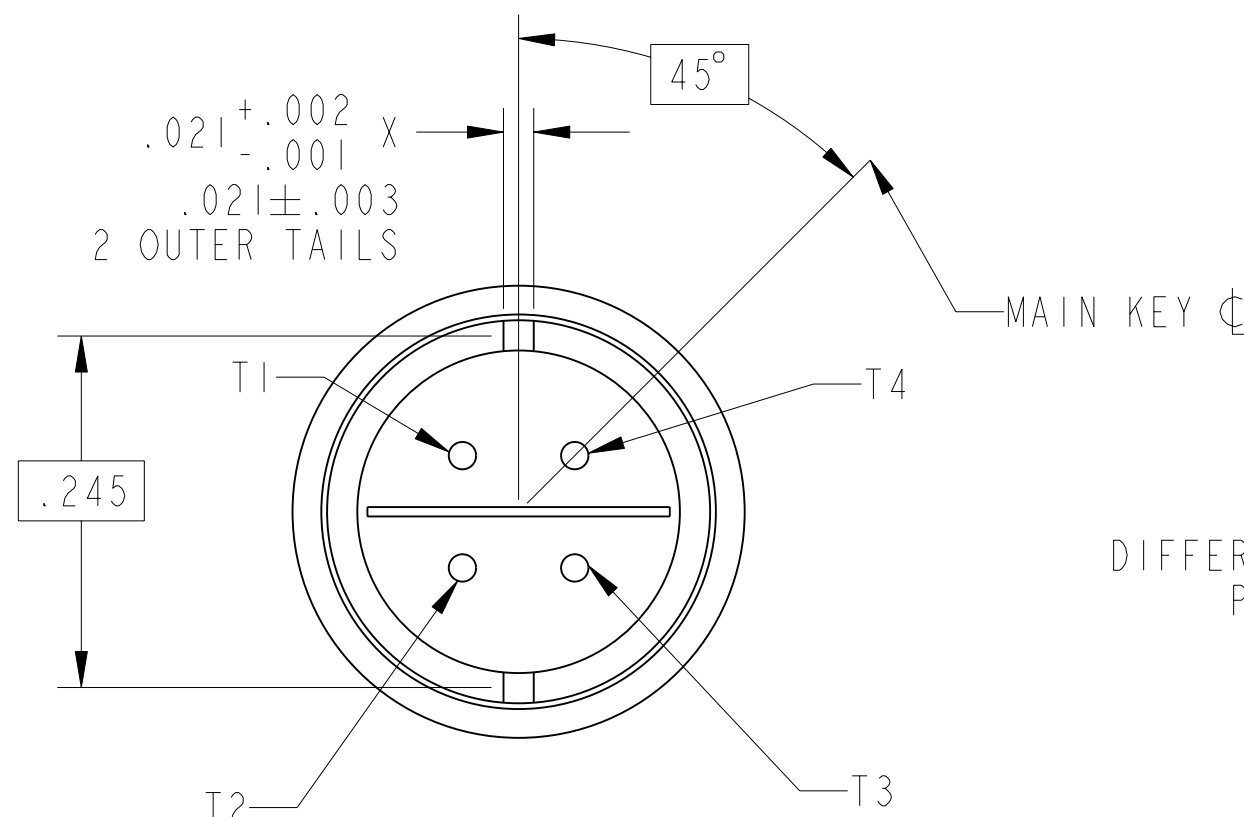
POS	QTY	PART NUMBER	DESCRIPTION	NOTE
I	I	21-033467-021M	CONTACT ASSEMBLY	

APPROVALS	DATE
PREPARED BY J. BORDEAU	
ENGINEER IN CHARGE D. PHILLIPS	02-May-12
DESIGN MANAGER E. HICKEY	
DESIGN ACTIVITY GROUP C-1	

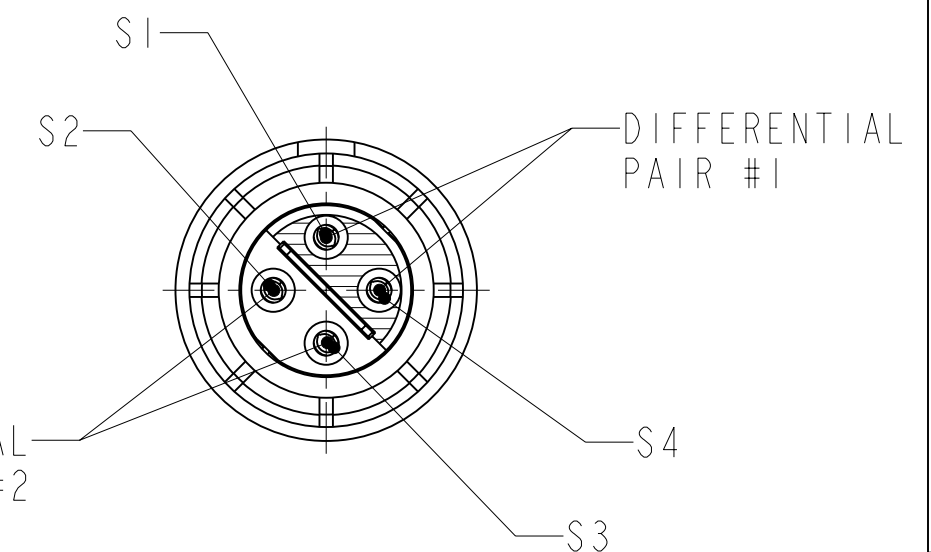
THIRD ANGLE PROJECTION



PARTS LIST			
<b>AMPHENOL CORPORATION</b> 40-60 DELAWARE AVENUE SIDNEY, N.Y. 13858			
<b>CONTACT, SOCKET, QUADRAX, ELECTRICAL CONNECTOR, TYPE D38999 I &amp; III, SPLIT-PAIR, PCB</b>			
SIZE <b>C</b>	CAGE CODE <b>77820</b>	DOCUMENT NO. <b>21-033467-031</b>	REV. <b>A</b>
SCALE: 7.5	REF. 21-033467-071	SHEET 1 OF 1	



VIEW AT R-R  
SCALE 7.500



MATING FACE VIEW  
SCALE 5.000