

REV. A	SHEET 1 OF 1	DOCUMENT NO. 21-033470-021
REVISIONS		
LTR	DESCRIPTION	DATE
A	INITIAL RELEASE	----

21-033470-021

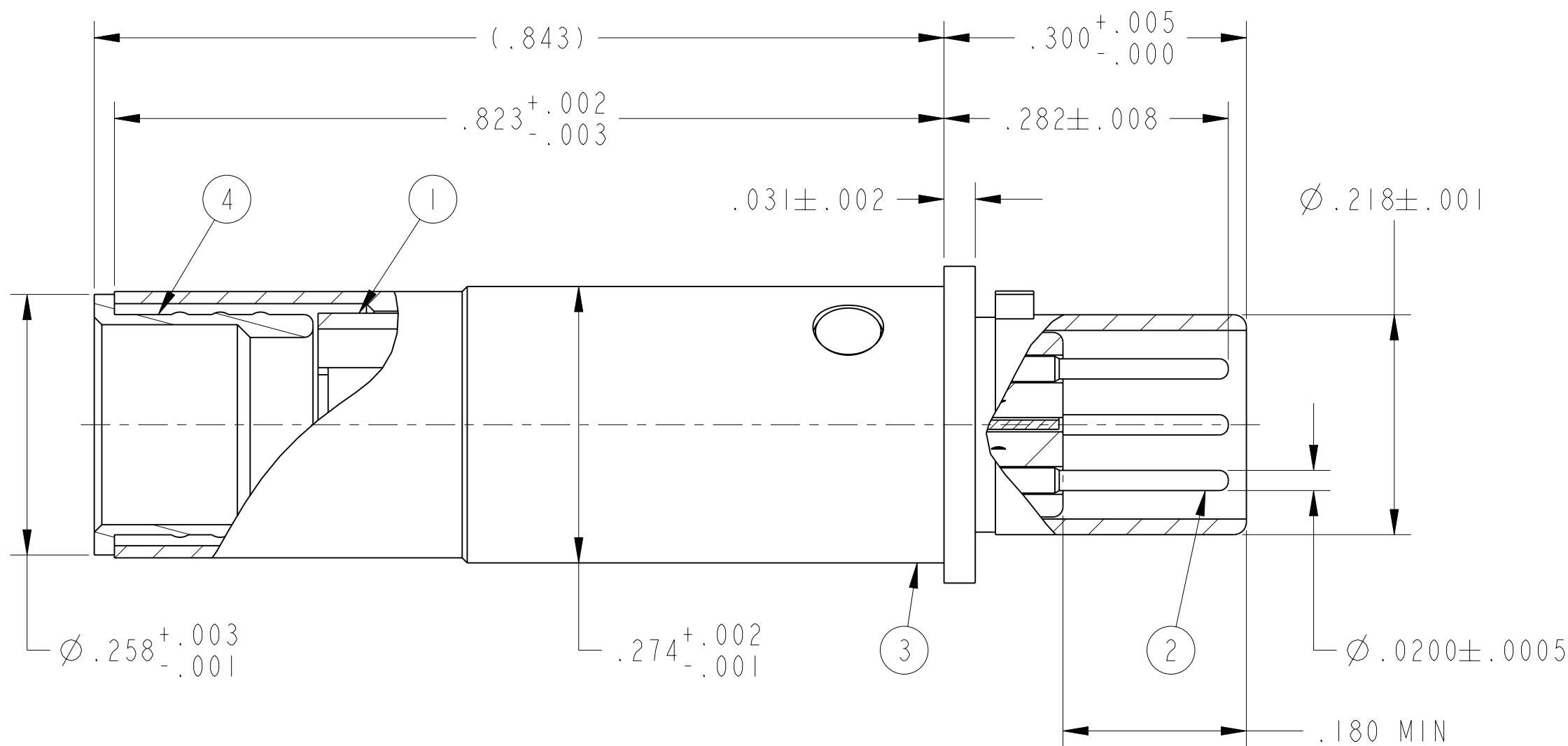
SHEET 1 OF 1

REV. A

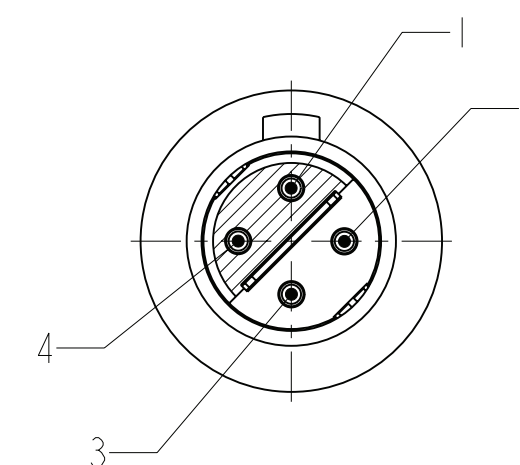
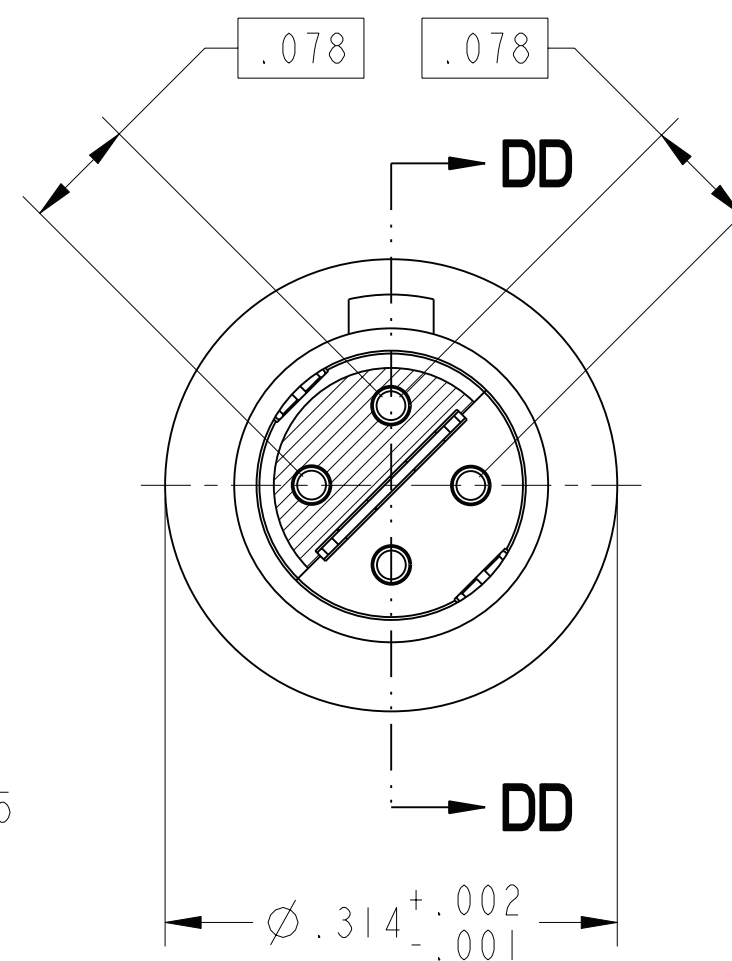
C

B

A



PARTIAL SECTION DD-DD



MATING FACE VIEW

SCALE 5.000

8. DIFFERENTIAL PAIRS:
PAIR #1: 1-4
PAIR #2: 2-3
7. MATES WITH M38999 QUADRAX SOCKETS 21-033471-().
6. CRIMPING TOOLS:
OUTER CONTACT- M22520/5-01 TOOL, DANIELS Y1999 OR M22520/5-45 DIE SET (HEX CLOSURE A)
INNER CONTACTS- M22520/2-01 TOOL, DANIELS K1777 POSITIONER
5. TERMINATES QUADRAX CABLE THERMAX 1536-195 (100 OHM) OR EQUIVALENT.
4. DRAWING ILLUSTRATES FINAL ASSEMBLY. CONTACT COMPONENTS ARE SHIPPED UNASSEMBLED. INSTALLATION INSTRUCTIONS & PIGGYBACK GROMMET SEAL (NOT ILLUSTRATED) ARE PACKAGED WITH EACH ASSEMBLY. PACKAGE PER PRODUCTION PROCESS SHEET.
3. MATERIALS:
OUTER & INNER CONTACTS- BERYLLIUM COPPER PER ASTM-B-196
SHIELD FERRULE- BRASS PER ASTM B453 OR QQ-B-626
INSULATORS & RETAINER- POLYETHERIMIDE
2. FINISH:
GOLD PLATED PER ASTM B488, TYPE II, CODE C, CLASS 1.27 (.000050 MIN)
OVER NICKEL PLATE PER AMS-QQ-N-290 (.000050 MIN).
1. CONTACTS MEET THE ENVELOPE DIMENSIONAL REQUIREMENTS OF M39029/90.

NOTES:

THE USE OF THIS DOCUMENT IS UNLIMITED. HOWEVER, DOCUMENTS REFERENCED HEREON MAY CONTAIN LIMITED RIGHTS DATA.

RELEASED / Mar . 20 2012, 9:44:40 AM

DOCUMENT NO. 21-033470-021

SHEET 1 OF 1

REV. A

N/A

NEXT ASSEMBLY

PRO/ENGINEER INFORMATION

Pro/e Model Used: 21-033470-021_HATCHED.ASSEMBLY
Drawing Name: 21-033470-021

UNLESS OTHERWISE SPECIFIED

LINEAR DIMENSIONS ARE IN INCHES
TOLERANCES:
.XXXX = ±.0005 ANGLES= ±2°
.XXX = ±.010
.XX = ±.03
.X = ±.1

DIM. & TOL. PER ASME Y14.5M;
DRM PER MIL-DTL-31000;
OTHER Amphenol Stds. PER 9-3800

LEGENDS:
= FLAG NOTE CALL OUT REFERENCE ONLY

SPECIFICATIONS

MATERIAL SPEC.
N/A

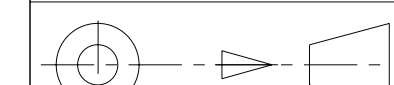
PROCESS SPEC.

N/A

POS	QTY	PART NUMBER	DESCRIPTION	NOTE
6	1	L-2119-DX	INSTALLATION INSTRUCTIONS	4
5	1	21-033321-030	PIGGYBACK GROMMET SEAL	4
4	1	21-033384-036	SHIELD FERRULE	
3	1	21-033384-044	OUTER CONTACT	
2	4	21-033470-002	INNER CONTACT	
1	1	21-033470-009	INSULATOR ASSEMBLY	

APPROVALS	DATE
PREPARED BY N. DAY	
ENGINEER IN CHARGE D. PHILLIPS	12-Mar-12
DESIGN MANAGER E. HICKEY	
DESIGN ACTIVITY GROUP MIL-AERO CI	

THIRD ANGLE PROJECTION



AMPHENOL CORPORATION
40-60 DELAWARE AVENUE
SIDNEY, N.Y. 13858

**CONTACT, PIN, QUADRAX,
ELECTRICAL CONNECTOR,
TYPE D38999 I & III**

SIZE C	CAGE CODE 77820	DOCUMENT NO. 21-033470-021	REV. A
SCALE: 7.5	REF. 21-033470-001	SHEET 1 OF 1	

VERSION 4

REVISION A

Eng PDM Information For Reference Only

REV. A

SHEET 1 OF 1

DOCUMENT NO. 21-033470-021