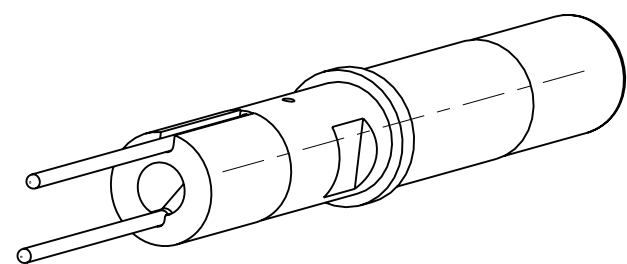
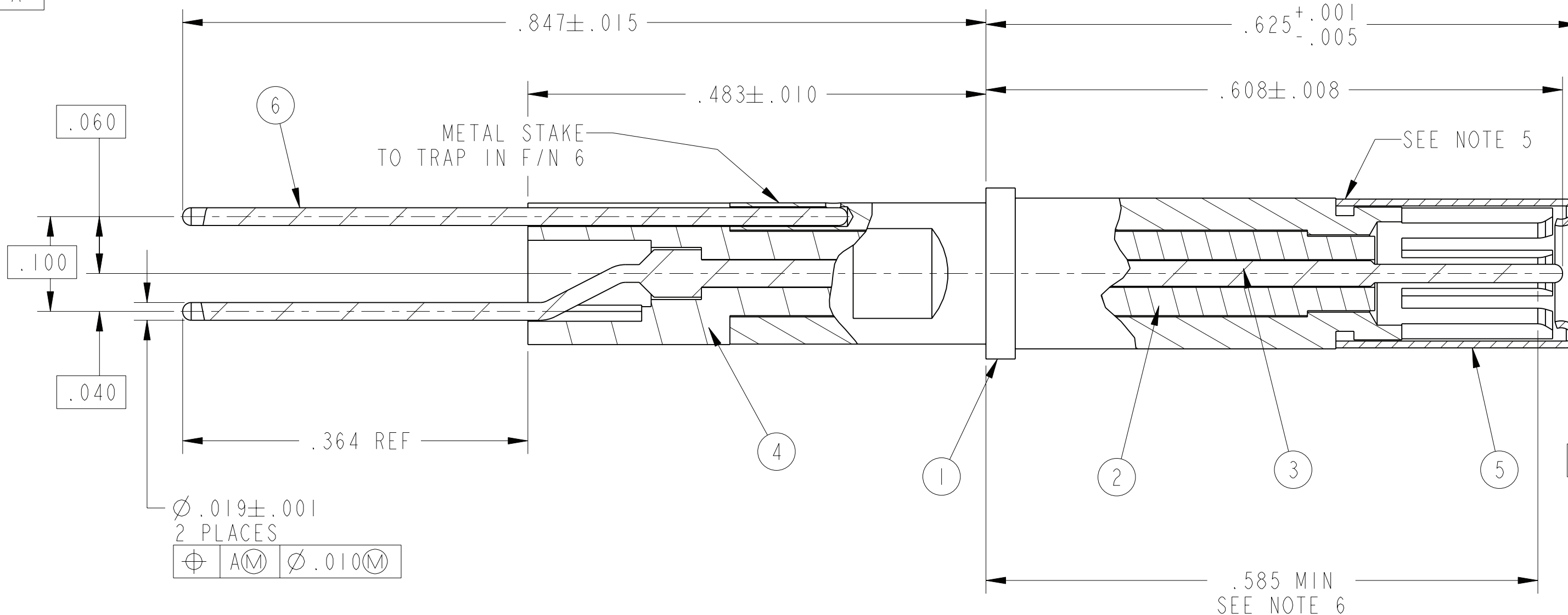
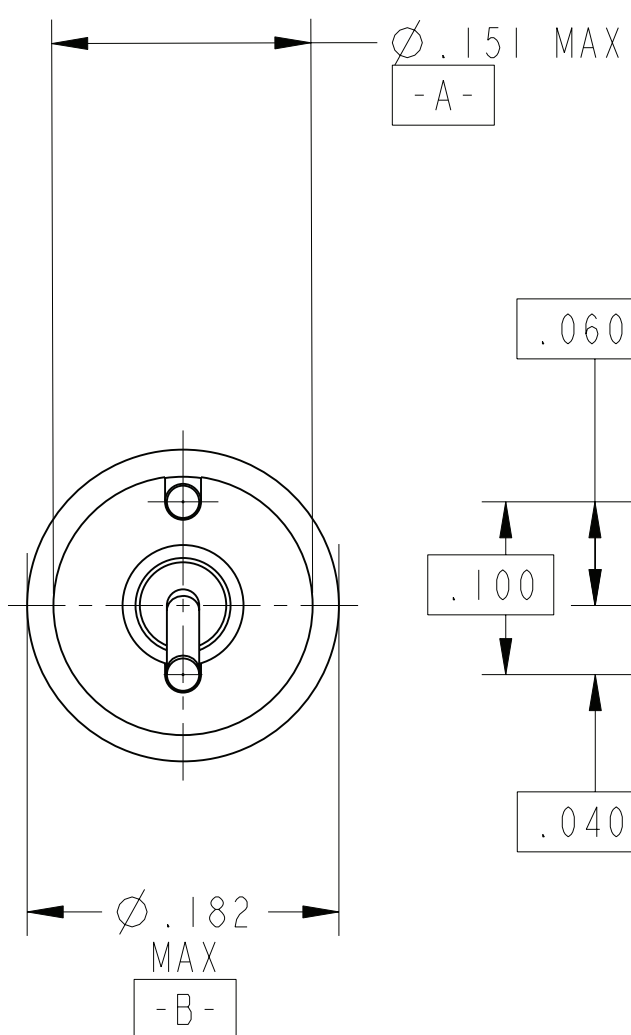
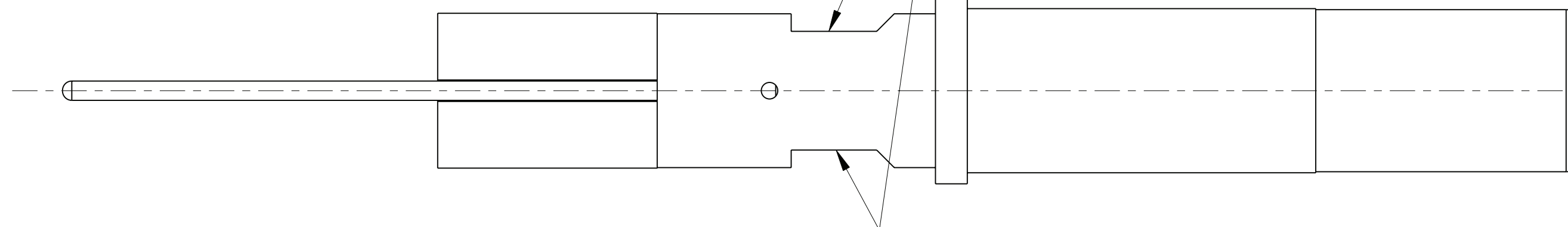


REV. B		SHEET 1 OF 2		DOCUMENT NO. 21-33614-1	
REVISIONS					
LTR	DESCRIPTION	DATE			
A	INITIAL RELEASE				
B	(CL11) ADD NOTE ECN:A5333	JHEATH 4/6/09			



SCALE 4.000

METAL STAKE EACH SIDE TO TRAP IN F/N 3



⊕	BS	⊖	∅.004
---	----	---	-------

SECTION A-A

POS	QTY	PART NUMBER	DESCRIPTION	NOTE
6	1	21-33614-5	PCB TAIL	
5	1	10-407914-12B	SLEEVE	
4	1	21-33613-4	REAR INSULATOR	
3	1	21-33614-3	INNER CONTACT	
2	1	21-33613-6	FRONT INSULATOR	
1	1	21-33613-2	OUTER CONTACT	

NOTES: SEE SHEET 2

THE USE OF THIS DOCUMENT IS UNLIMITED. HOWEVER, DOCUMENTS REFERENCED HEREON MAY CONTAIN LIMITED RIGHTS DATA.

N/A
NEXT ASSEMBLY

PRO/ENGINEER INFORMATION
Pro/e Model Used:
21-033614-001.ASSEM
Drawing Name:
21-033614-001

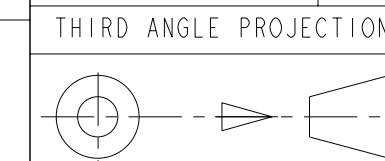
UNLESS OTHERWISE SPECIFIED
SPECIFICATIONS
MATERIAL SPEC. N/A
PROCESS SPEC. N/A

LINEAR DIMENSIONS ARE IN INCHES
TOLERANCES:
.XXXX = ±.0005 ANGLES= ±2°
.XXX = ±.010
.XX = ±.03
.X = ±.1

DIM. & TOL. PER ASME Y14.5M;
DRM PER MIL-DTL-31000;
OTHER Amphenol Stds. PER 9-3800

LEGENDS:
= FLAG NOTE CALL OUT REFERENCE ONLY

APPROVALS	DATE
PREPARED BY D. FREAR	
ENGINEER IN CHARGE LRATCHFORD	06-Apr-09
DESIGN MANAGER LRATCHFORD	
DESIGN ACTIVITY GROUP MIL-AERO	



PARTS LIST
AMPHENOL CORPORATION
40-60 DELAWARE AVENUE
SIDNEY, N.Y. 13858
**CONTACT, SOCKET, PCB
COAXIAL, SIZE 12,
TYPE LJT**

SIZE C	CAGE CODE 77820	DOCUMENT NO. 21-33614-1	REV. B
SCALE: 9.0	REF 21-33857-3	SHEET 1 OF 2	

21-33614-1

SHEET 2 OF 2

REV. B

C

B

A

8. AFTER ASSEMBLY, THE OUTER SURFACE OF THE SOCKET TINES MUST NOT BE VISIBLE THROUGH THE OPENING OF HOOD WHEN VIEWED AT 20X DOWN THE CENTER AXIS OF THE ASSEMBLY.
7. A .0950+.0002-.0000 DIA HARDENED STEEL PIN MUST ENGAGE SOCKET WITH A FORCE NOT GREATER THAN 30 OUNCES. FOLLOWING THIS A .0930 +.0000-.0002 DIA HARDENED STEEL PIN MUST DISENGAGE SOCKET WITH A FORCE NOT LESS THAN 4 OUNCES. PINS TO HAVE A SPHERICAL TIP, A ³ FINISH AND ENGAGE .114 MIN. NOTE APPLIES AFTER SLEEVE ASSEMBLY.
6. INDICATED DIMENSION TO BE FROM REAR OF SOCKET SHOULDER TO POINT OF ENGAGEMENT OF CONTACT AND A .0940±.0002 DIA SQUARE ENDED PIN.
5. CRIMP SLEEVE TIGHTLY TO OUTER CONTACT.
4. DIELECTRIC WITHSTANDING VOLTAGE TEST:

CONTACT ASSEMBLY 21-33614-1 SHALL MEET THE FOLLOWING REQUIREMENTS AFTER ASSEMBLY HAS BEEN COMPLETED.
 - A. A TEST VOLTAGE OF 500 VOLTS AC RMS SHALL BE APPLIED BETWEEN THE INNER AND OUTER CONTACTS.
 - B. THE VOLTAGE SHALL BE APPLIED FR 2 SECONDS MINIMUM.
 - C. THE LEAKAGE CURRENT SHALL NOT EXCEED 1 MILLAMPERE.
 - D. THERE SHALL BE NO EVIDENCE OF BREAKDOWN OR FLASHOVER.
3. PACKAGE PER PRODUCTION SHEET.
HANDLE CAREFULLY TO AVOID DISTORTION OF PCB TAILS.
2. CLEANING OF PARTS IN CHLORINATED SOLVENTS IS NOT PERMISSIBLE.
1. MATES WITH COAXIAL PIN CONTACT SERIES 21-33122-54().

NOTES:

THE USE OF THIS DOCUMENT IS UNLIMITED. HOWEVER, DOCUMENTS REFERENCED HEREON MAY CONTAIN LIMITED RIGHTS DATA.

FORMAT: C-U-E-1

21-33614-1

SHEET 2 OF 2

REV. B

SIZE C	CAGE CODE 77820	DOCUMENT NO. 21-33614-1	REV. B
SCALE: 10.0		REF: 21-33857-3	SHEET 2 OF 2

RELEASE STATE
MIP

REVISION
B

VERSION
01

SHEET 2 OF 2

21-33614-1

REV. B