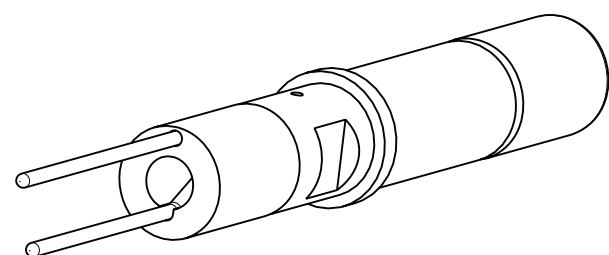
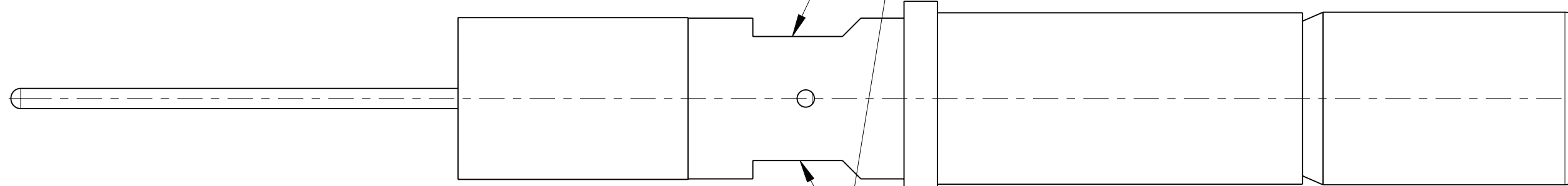


REV. C	SHEET 1 OF 2	DOCUMENT NO. 21-33614-41
REVISIONS		
LTR	DESCRIPTION	DATE
A	INITIAL RELEASE	4/08/04
B	(CL 11) SEE ENG CHG ECN: 98109-0000	9/29/05
C	(CL 11) ADD NOTE 8 ECN:A5333	JHEATH 4/6/09

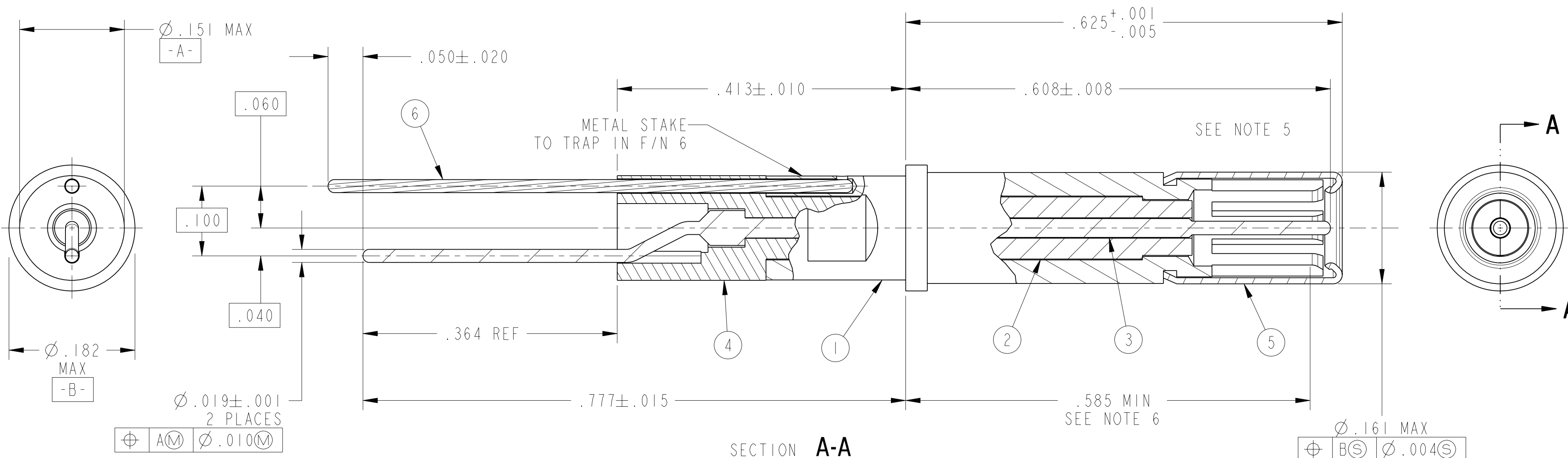


METAL STAKE EACH SIDE TO TRAP IN F/N 3



METAL STAKE TO TRAP IN F/N 6

SEE NOTE 5



SEE SHEET 2

NOTES:

THE USE OF THIS DOCUMENT IS UNLIMITED. HOWEVER, DOCUMENTS REFERENCED HEREON MAY CONTAIN LIMITED RIGHTS DATA.

N/A  
NEXT ASSEMBLY

PRO/ENGINEER INFORMATION  
Pro/e Model Used:  
21-033614-041.ASSEM  
Drawing Name:  
21-33614-41

UNLESS OTHERWISE SPECIFIED

LINEAR DIMENSIONS ARE IN INCHES  
TOLERANCES:  
.XXXX =  $\pm .0005$  ANGLES =  $\pm 2^\circ$   
.XXX =  $\pm .010$   
.XX =  $\pm .03$   
.X =  $\pm .1$

DIM. & TOL. PER ASME Y14.5M;  
DRM PER MIL-DTL-31000;  
OTHER Amphenol Stds. PER 9-3800  
LEGENDS:  
= FLAG NOTE CALL OUT REFERENCE ONLY

SPECIFICATIONS

MATERIAL SPEC.  
N/A

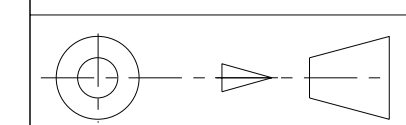
PROCESS SPEC.

N/A

POS	QTY	PART NUMBER	DESCRIPTION	NOTE
6	1	21-033614-025	PCB TAIL	
5	1	10-407914-12B	SLEEVE	
4	1	21-033613-044	REAR INSULATOR	
3	1	21-033614-043	INNER CONTACT	
2	1	21-033613-006	FRONT INSULATOR	
1	1	21-033613-042	OUTER CONTACT	

APPROVALS	DATE
PREPARED BY: D. FREAR	
ENGINEER IN CHARGE: RATCHFORD	25-Mar-04
DESIGN MANAGER: A. DAVIS	
DESIGN ACTIVITY GROUP: MIL-AERO	

THIRD ANGLE PROJECTION



PARTS LIST

**AMPHENOL CORPORATION**  
40-60 DELAWARE AVENUE  
SIDNEY, N.Y. 13858

**CONTACT, SOCKET, PCB  
COAXIAL, SIZE 12  
TYPE LJT**

SIZE C	CAGE CODE 77820	DOCUMENT NO. 21-33614-41	REV. C
SCALE: 9.0	REF. 21-33614-1, -21	SHEET 1 OF 2	

21-33614-41

SHEET 2 OF 2

REV. C

C

B

A

8. AFTER ASSEMBLY, THE OUTER SURFACE OF THE SOCKET TINES MUST NOT BE VISIBLE THROUGH THE OPENING OF HOOD WHEN VIEWED AT 20X DOWN THE CENTER AXIS OF THE ASSEMBLY.
7. A .0950+.0002-.0000 DIA HARDENED STEEL PIN MUST ENGAGE SOCKET WITH A FORCE NOT GREATER THAN 30 OUNCES. FOLLOWING THIS A .0930+.0000-.0002 DIA HARDENED STEEL PIN MUST DISENGAGE SOCKET WITH A FORCE NOT LESS THAN 4 OUNCES. PINS TO HAVE A SPHERICAL TIP, A 3/ FINISH AND ENGAGE .114 MIN. NOTE APPLIES AFTER SLEEVE ASSEMBLY.
6. INDICATED DIMENSION TO BE FROM REAR OF SOCKET SHOULDER TO POINT OF ENGAGEMENT OF CONTACT AND A .0940±.0002 DIA SQUARE ENDED PIN.
5. CRIMP SLEEVE TIGHTLY TO OUTER CONTACT.
4. DIELECTRIC WITHSTANDING VOLTAGE TEST:  
  
CONTACT ASSEMBLY SHALL MEET THE FOLLOWING REQUIREMENTS AFTER ASSEMBLY HAS BEEN COMPLETED.
  - A. A TEST VOLTAGE OF 500 VOLTS AC RMS SHALL BE APPLIED BETWEEN THE INNER AND OUTER CONTACTS.
  - B. THE VOLTAGE SHALL BE APPLIED FR 2 SECONDS MINIMUM.
  - C. THE LEAKAGE CURRENT SHALL NOT EXCEED 1 MILLAMPERE.
  - D. THERE SHALL BE NO EVIDENCE OF BREAKDOWN OR FLASHOVER.
3. PACKAGE PER PRODUCTION SHEET.  
HANDLE CAREFULLY TO AVOID DISTORTION OF PCB TAILS.
2. CLEANING OF PARTS IN CHLORINATED SOLVENTS IS NOT PERMISSIBLE.
1. MATES WITH COAXIAL PIN CONTACT SERIES 21-33122-54().

**NOTES:**

THE USE OF THIS DOCUMENT IS UNLIMITED.  
HOWEVER, DOCUMENTS REFERENCED HEREON  
MAY CONTAIN LIMITED RIGHTS DATA.

FORMAT: C-0-E-1

21-33614-41

SHEET 2 OF 2

REV. C

SIZE <b>C</b>	CAGE CODE <b>77820</b>	DOCUMENT NO. <b>21-33614-41</b>	REV. <b>C</b>
SCALE: 10.0	REF: 21-33614-1, -21	SHEET 2 OF 2	

DOCUMENT NO. 21-33614-41  
 REGION C  
 RELEASE STATE Released  
 SHEET 2 OF 2  
 REV. C