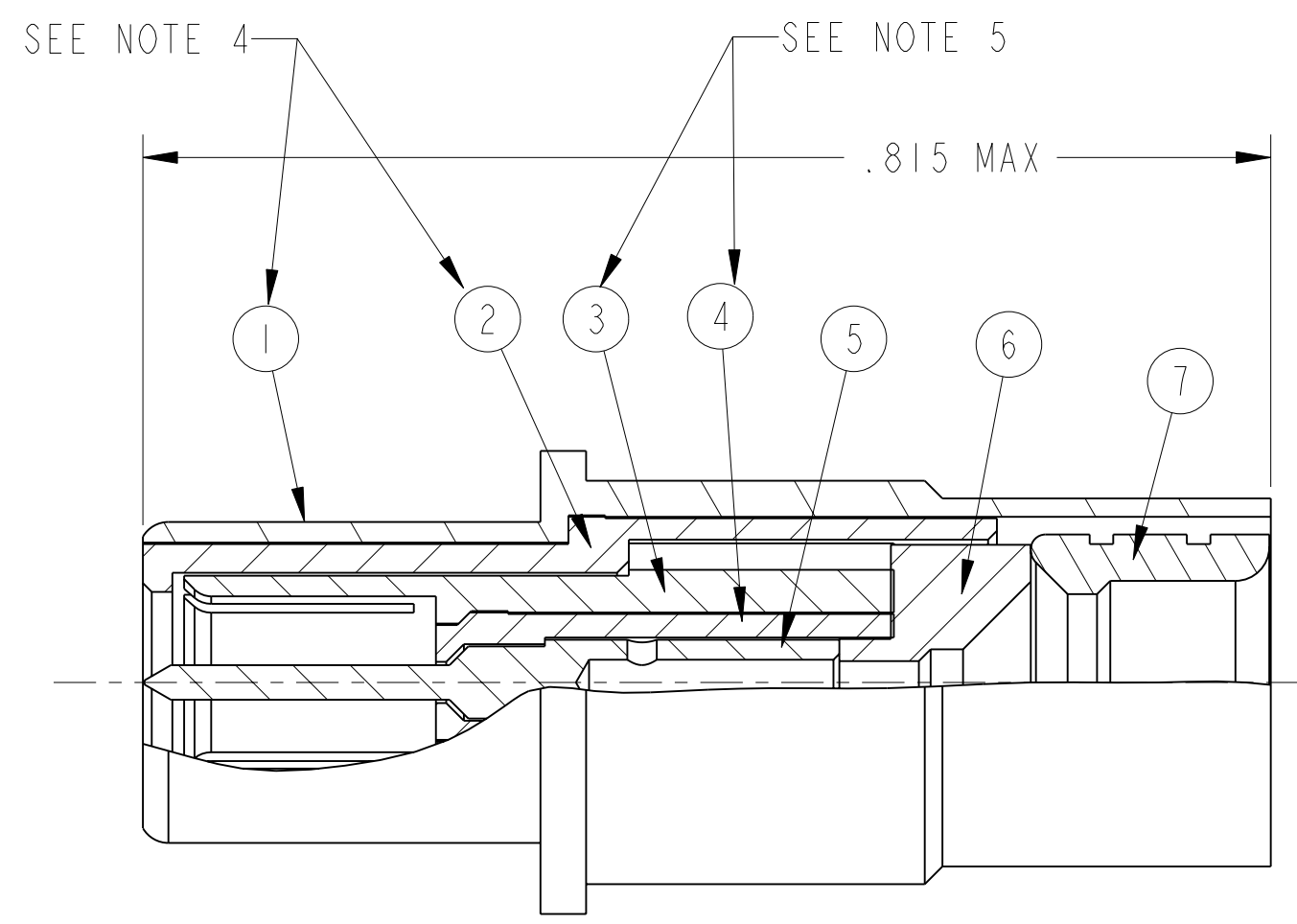
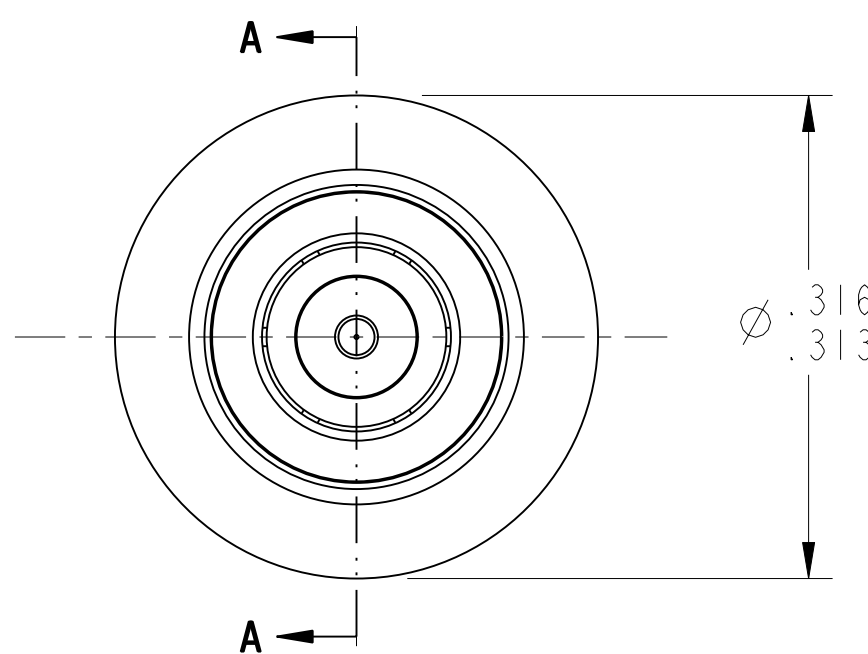


REVISIONS			
LTR	DESCRIPTION	DATE	APPVD
A	INITIAL RELEASE NUM: R2001-267		
B	(CL 11) CHG LABEL INFO (NOTE 3) ECN: 93716	V. JONES 11-4-03	

DOCUMENT NO. 21-33617-1  
SHEET 1 OF 1  
REV. B

- 10. USE ASSEMBLY INSTRUCTION SHEET PN-1000 (INSTRUCTIONS FOR T3-46TD08-LD) FOR CONTACT ASSEMBLY.
- 9. ITEM NOT SHOWN.
- 8. CONTACT BODY WILL BE MARKED T3-46TD08-LD.
- 7. CONTACT ASSEMBLY THE SAME AS T3-46TD08-LD, EXCEPT REMOVABLE BOOT SEAL IN LIEU OF HEAT SHRINK BOOT SEAL SUPPLIED WITH CONTACT,
- 6. PROCESS SPEC:  
TEST 9-5272-28  
TEST 9-7607  
PROCESS 9-8798



- 5. BOND PER 9-8798 INSULATOR (ITEM #4) INTO INTERMEDIATE CONTACT (ITEM#3) UNTIL FULLY BOTTOMED.
- 4. BOND PER 9-8798 INSULATOR (ITEM #2) INTO OUTER BODY (ITEM#1) UNTIL FULLY BOTTOMED.
- 3. ALL ITEMS (#1-#7 & #9) TO BE SHIPPED LOOSE (UNASSEMBLED) IN A RIGID CONTAINER (VIAL). VIAL, INSTRUCTION SHEET, AND IDENTIFICATION LABEL TO BE PACKAGED IN A PLASTIC BAG AND SEALED. IDENTIFICATION LABEL TO CONTAIN THE FOLLOWING:

AMPHENOL CORPORATION  
TWINAX PIN CONTACT  
21-033617-001  
81205-DAF3524P406-101  
77820-DATE CODE PER 9-3895-WORK ORDER NUMBER  
EXAMPLE:  
77820-0338-001000

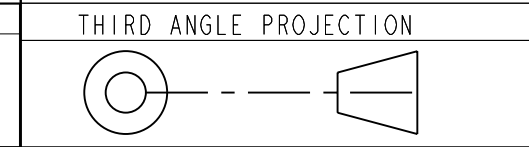
- 2. CONTACT DESIGNED TO MEET THE APPLICABLE REQUIREMENTS OF MIL-C-39029/90.
- 1. CONTACT DESIGNED TO TERMINATE MI7176-00002 CABLE.

**NOTES:**  
WARNING: IF THIS BOX  IS CHECKED: THIS DRAWING HAS BEEN MODIFIED BY HAND-DRAFTING WITHOUT COMPUTER UPDATING

THE USE OF THIS DOCUMENT IS UNLIMITED. HOWEVER, DOCUMENTS REFERENCED HEREON MAY CONTAIN LIMITED RIGHTS DATA.

N/A	<b>PRO/ENGINEER INFORMATION</b>
N/A	Pro/e Model Used: T3-46TD08-LD_8P_TW_SHORT.ASSEM
NEXT ASSEMBLY	Drawing Name: 21-33617-1

UNLESS OTHERWISE SPECIFIED  
LINEAR DIMENSIONS ARE IN INCHES  
TOLERANCES:  
.XXXX = ±.0005  
.XXX = ±.010  
.XX = ±.03  
.X = ±.1  
ANGLES = ±2°  
OTHER STANDARDS PER 9-3800 AND DOD-D-1000



SPECIFICATIONS  
MATERIAL SPEC.  
N/A  
PROCESS SPEC.  
SEE NOTE 6

POS	QTY	PART NUMBER	DESCRIPTION	NOTE
9	1	21-33321-7	REMOVABLE BOOT SEAL	9
8	1	PN-1000	ASSEMBLY INSTRUCTION SHEET	9, 10
7	1	T3-46TD08-116BD	FERRULE, INNER	
6	1	P-209546-33	INSULATOR, REAR	
5	1	T3-46T08-114LD	PIN CONTACT, CENTER	
4	1	T3-46T08-113P	INSULATOR, INNER	5
3	1	T3-46T08-112LD	SOCKET CONTACT, INTERMEDIATE	5
2	1	T3-46T08-111P	INSULATOR, OUTER	4
1	1	T3-46TD08-110LD	OUTER BODY, PIN	4

APPROVALS		DATE	<b>AMPHENOL CORPORATION</b> AMPHENOL AEROSPACE OPERATIONS STONEY, N. Y. 13838 CONTACT, PIN, ELECTRICAL CONNECTOR, SIZE 8, CONCENTRIC TWINAX	
PREPARED	L. RATCHFORD	07-Jun-02		
CHECKED-ENG	L. RATCHFORD	7/23/01		
APPROVED-MATERIAL LAB	J. TORAROWSKI	7/24/01		
APPROVED-PROCESS				
APPROVED-ENG-ENGR	L. RATCHFORD	7/23/01	SIZE	FSCM NO.
APPROVED-QUALITY			<b>C</b>	<b>77820</b>
APPROVED-ENG MGR	L. RATCHFORD	7/23/01	SCALE: 8.0	REF:
			DOCUMENT NO.	REV.
			<b>21-33617-1</b>	<b>B</b>
			SHEET 1 OF 1	

FORMAT: CPLN REV: 04-MAR-1999 DEC

DOCUMENT NO. 21-33617-1  
SHEET 1 OF 1  
REV. A