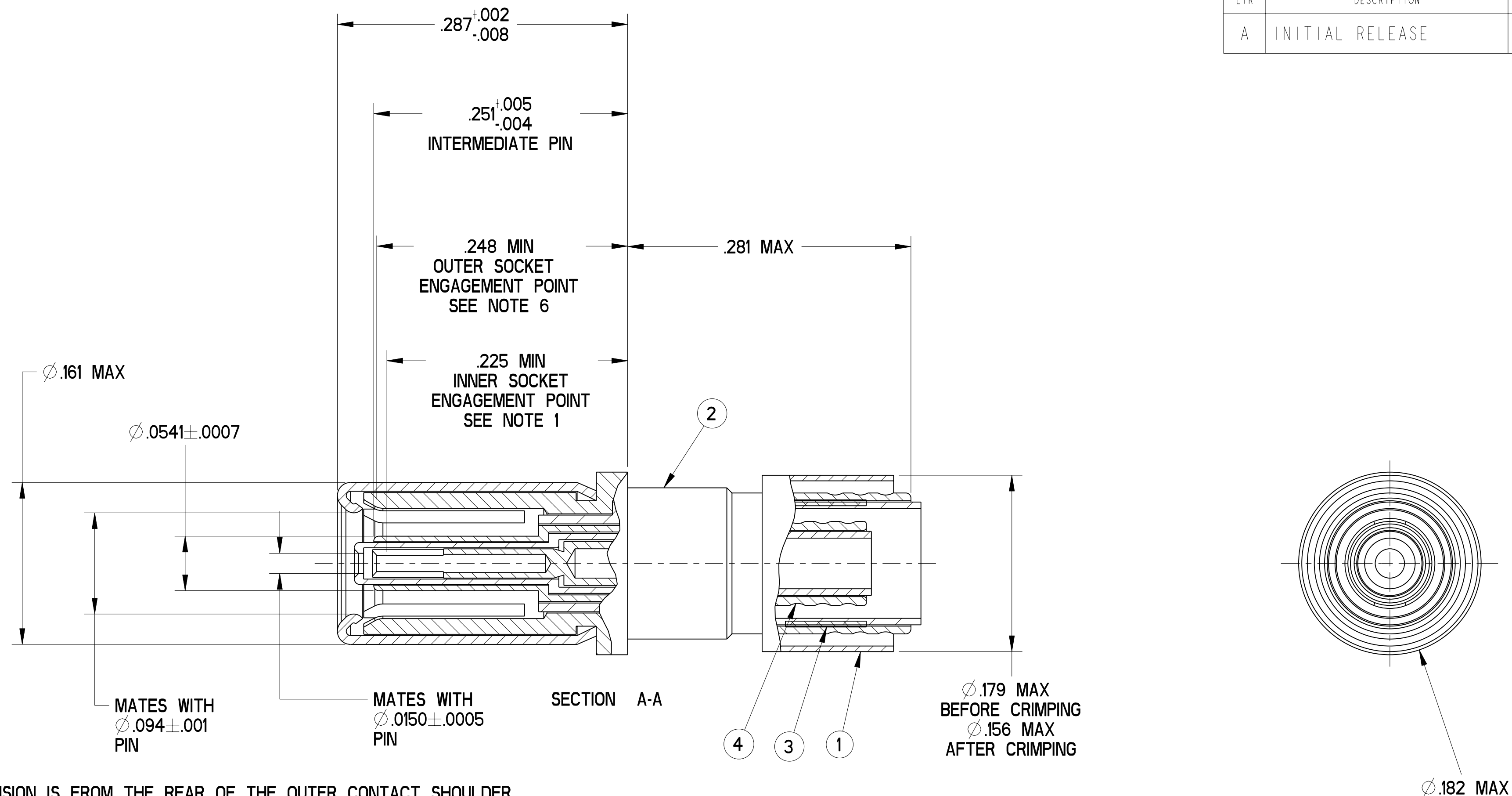


REV. A	SHEET 1 OF 1	DOCUMENT NO. 21-33640-25
REVISIONS		
LTR	DESCRIPTION	DATE
A	INITIAL RELEASE	



- 6. INDICATED DIMENSION IS FROM THE REAR OF THE OUTER CONTACT SHOULDER TO THE POINT AT WHICH A $\phi .0940 \pm .0002$ SQUARE ENDED PIN ENGAGES THE OUTER SOCKET CONTACT SPRING.
- 5. MATES WITH TWINAX & TRIAX PIN CONTACTS 21-33909-XX (JN1104.75T INTERFACE).
- 4. TERMINATES TWINAX CABLE M17/176-00002 & GSC-12-2549-00 OR EQUIVALENT.
- 3. INDICATED COMPONENT IS NOT ILLUSTRATED. COMPLETE INSTALLATION INSTRUCTIONS PACKAGED WITH EACH ASSEMBLY. PACKAGE PER PRODUCTION PROCESS SHEET.
- 2. PROCESS SPEC:
TEST 9-5272-36
- 1. INDICATED DIMENSION IS FROM THE REAR OF THE OUTER CONTACT SHOULDER TO THE POINT AT WHICH A $\phi .0150 \pm .0002$ SQUARE ENDED PIN ENGAGES THE INNER SOCKET CONTACT SPRING.

NOTES:

THE USE OF THIS DOCUMENT IS UNLIMITED. HOWEVER, DOCUMENTS REFERENCED HEREON MAY CONTAIN LIMITED RIGHTS DATA.

RELEASED / Mar . 14 2005, 02:24 PM

N/A	PRO/ENGINEER INFORMATION
N/A	Pro/e Model Used: 21-33640-25_JT_TW_SKT_ASY_ASSEM
	Drawing Name: 21-33640-25_JT_TW_SKT_ASY

UNLESS OTHERWISE SPECIFIED

LINEAR DIMENSIONS ARE IN INCHES
TOLERANCES:
.XXXX = $\pm .0005$ ANGLES = $\pm 2^\circ$
.XXX = $\pm .010$
.XX = $\pm .03$
.X = $\pm .1$

DIM. & TOL. PER ASME Y14.5M;
DRM PER MIL-DTL-31000;
OTHER Amphenol Sids. PER 9-3800

LEGENDS:
= FLAG NOTE CALL OUT
REFERENCE ONLY

SPECIFICATIONS

MATERIAL SPEC.
N/A

PROCESS SPEC.
SEE NOTE 2

POS	QTY	PART NUMBER	DESCRIPTION	NOTE
5	1	L-2092-W	INSTALLATION INSTRUCTIONS	3
4	1	21-33641-121	INNER CONTACT ASSEMBLY	
3	1	21-33628-51	FERRULE, INTERMEDIATE	
2	1	21-33641-11	OUTER CONTACT ASSEMBLY	
1	1	21-33765-551	FERRULE, OUTER	

APPROVALS	DATE
PREPARED BY: RATCHFORD	30-Jun-04
ENGINEER IN CHARGE: RATCHFORD	
DESIGN MANAGER: A. DAVIS	
DESIGN ACTIVITY GROUP: MIL-AERO	
THIRD ANGLE PROJECTION	

PARTS LIST			
AMPHENOL CORPORATION 40-60 DELAWARE AVENUE SIDNEY, N.Y. 13838			
CONTACT, SOCKET, TWINAX, ELECTRICAL CONNECTOR, TYPE JT-R, SIZE 12			
SIZE C	CAGE CODE 77820	DOCUMENT NO. 21-33640-25	REV. A
SCALE: 12.0		REF: 21-33908-28	SHEET 1 OF 1