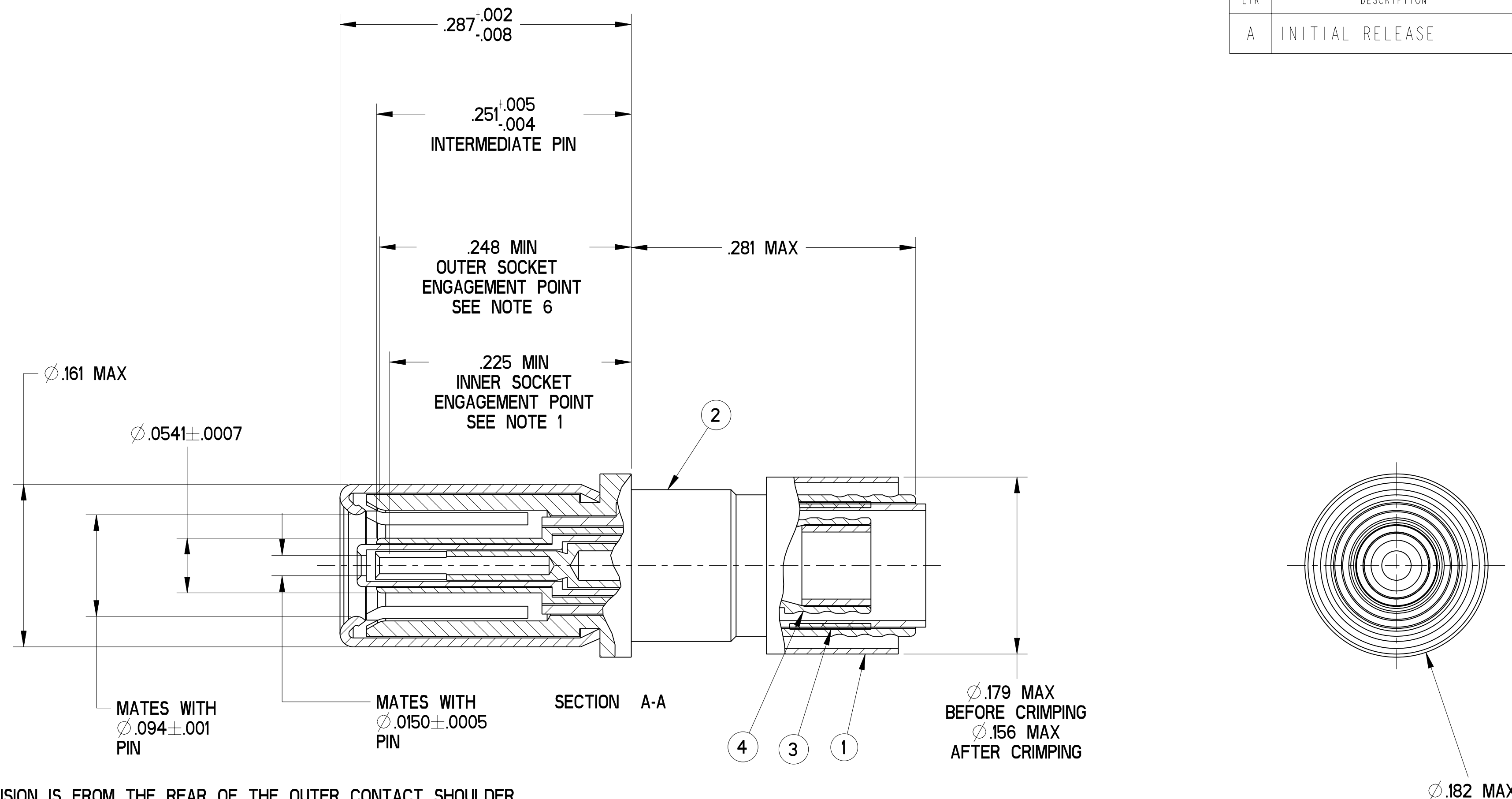


REV. A	SHEET 1 OF 1	DOCUMENT NO. 21-33640-28
REVISIONS		
LTR	DESCRIPTION	DATE
A	INITIAL RELEASE	



- INDICATED DIMENSION IS FROM THE REAR OF THE OUTER CONTACT SHOULDER TO THE POINT AT WHICH A Ø.0940 ±.0002 SQUARE ENDED PIN ENGAGES THE OUTER SOCKET CONTACT SPRING.
- MATES WITH TWINAX & TRIAX PIN CONTACTS 21-33909-XX (JN1104.75T INTERFACE).
- TERMINATES TWINAX CABLE 0024A0024 (CHEMINAX) OR EQUIVALENT.
- INDICATED COMPONENT IS NOT ILLUSTRATED. COMPLETE INSTALLATION INSTRUCTIONS PACKAGED WITH EACH ASSEMBLY. PACKAGE PER PRODUCTION PROCESS SHEET.
- PROCESS SPEC:  
TEST 9-5272-36
- INDICATED DIMENSION IS FROM THE REAR OF THE OUTER CONTACT SHOULDER TO THE POINT AT WHICH A Ø.0150 ±.0002 SQUARE ENDED PIN ENGAGES THE INNER SOCKET CONTACT SPRING.

NOTES:

THE USE OF THIS DOCUMENT IS UNLIMITED. HOWEVER, DOCUMENTS REFERENCED HEREON MAY CONTAIN LIMITED RIGHTS DATA.

RELEASED / Dec . 09 2004, 11:30 AM

N/A	PRO/ENGINEER INFORMATION
N/A	Pro/e Model Used: 21-33640-28_JT_TW_SKT_ASY_ASSEM
	Drawing Name: 21-33640-28_JT_TW_SKT_ASY

UNLESS OTHERWISE SPECIFIED

LINEAR DIMENSIONS ARE IN INCHES

TOLERANCES:

.XXXX = ±.0005 ANGLES = ±2°

.XXX = ±.010

.XX = ±.03

.X = ±.1

DIM. & TOL. PER ASME Y14.5M;  
DRM PER MIL-DTL-31000;  
OTHER Amphenol Sids. PER 9-3800

LEGENDS:  
= FLAG NOTE CALL OUT REFERENCE ONLY

SPECIFICATIONS

MATERIAL SPEC.  
N/A

PROCESS SPEC.  
SEE NOTE 2

POS	QTY	PART NUMBER	DESCRIPTION	NOTE
5	1	L-2092-V	INSTALLATION INSTRUCTIONS	3
4	1	21-33641-12	INNER CONTACT ASSEMBLY	
3	1	21-33765-66	FERRULE, INTERMEDIATE	
2	1	21-33641-11	OUTER CONTACT ASSEMBLY	
1	1	21-33765-551	FERRULE, OUTER	

APPROVALS	DATE
PREPARED BY: RATCHFORD	30-Jun-04
ENGINEER IN CHARGE: RATCHFORD	
DESIGN MANAGER: A. DAVIS	
DESIGN ACTIVITY GROUP: MIL-AERO	
THIRD ANGLE PROJECTION	

PARTS LIST			
AMPHENOL CORPORATION 40-60 DELAWARE AVENUE SIDNEY, N.Y. 13838			
CONTACT, SOCKET, TWINAX, ELECTRICAL CONNECTOR, TYPE JT-R, SIZE 12			
SIZE C	CAGE CODE 77820	DOCUMENT NO. 21-33640-28	REV. A
SCALE: 12.0 REF:		21-33908-28	SHEET 1 OF 1