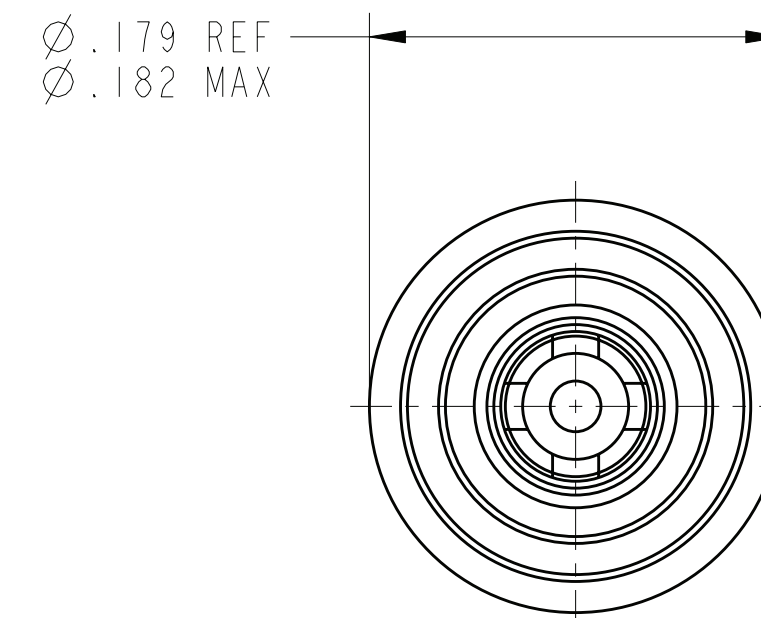
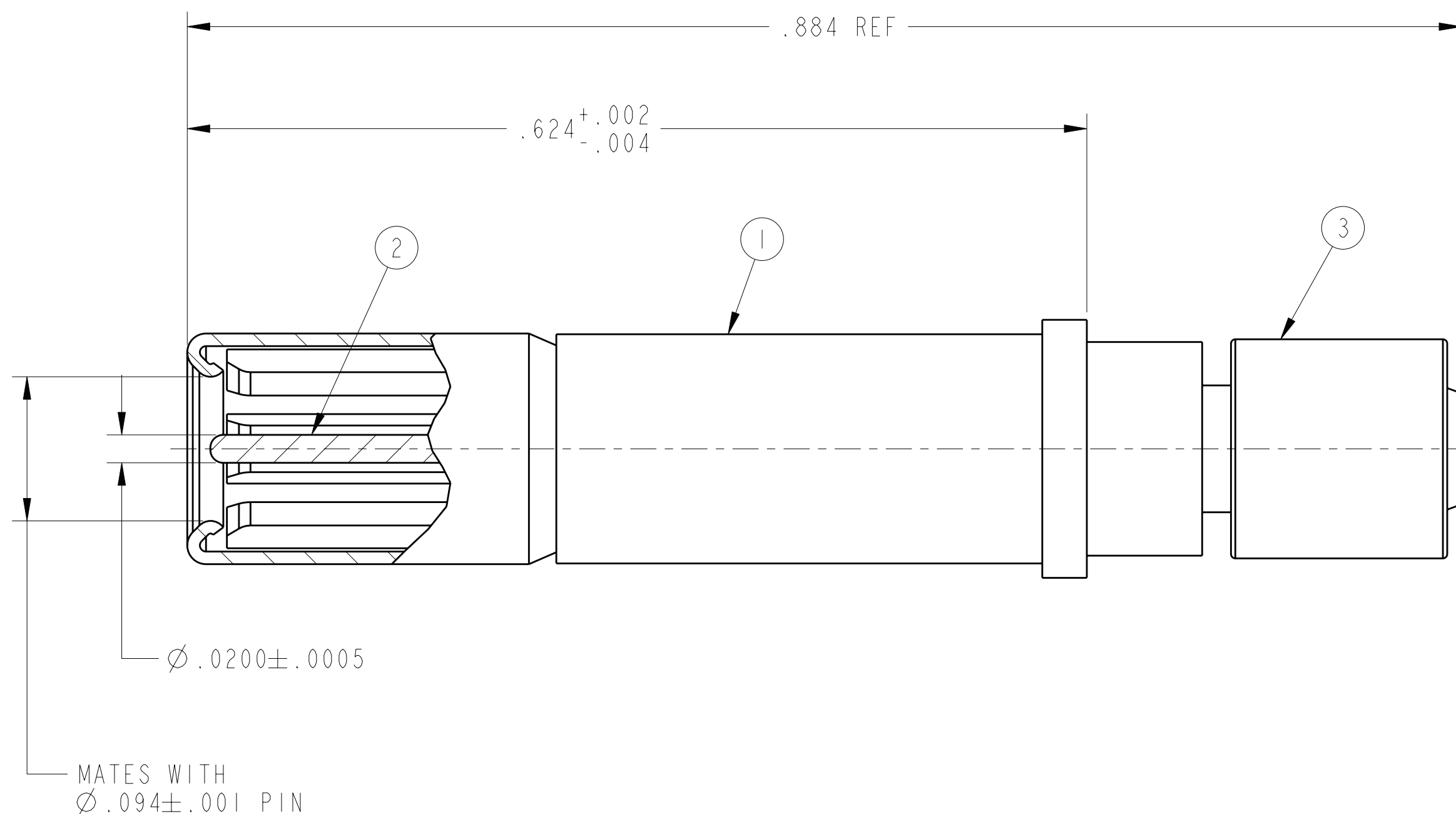


REV. A	SHEET 1 OF 1	DOCUMENT NO. 21-033650-018
REVISIONS		
LTR	DESCRIPTION	DATE
A	INITIAL RELEASE	

21-033650-018

SHEET 1 OF 1

REV. A



- 5. MEETS THE APPLICABLE REQUIREMENTS OF AS39029/103.
- 4. CONTACT TERMINATES RG178 COAX CABLE OR EQUIVALENT.
- 3. COMPLETE INSTALLATION INSTRUCTIONS PACKAGED WITH EACH ASSEMBLY. PACKAGE PER PRODUCTION PROCESS SHEET.
- 2. INDICATED COMPONENT NOT ILLUSTRATED.
- 1. PROCESS SPEC: 9-5272-23

NOTES:

THE USE OF THIS DOCUMENT IS UNLIMITED. HOWEVER, DOCUMENTS REFERENCED HEREON MAY CONTAIN LIMITED RIGHTS DATA.

RELEASED / May . 25 2010, 2:00:37 PM

DOCUMENT NO. 21-033650-018 SHEET 1 OF 1 REV. A

N/A

NEXT ASSEMBLY

PRO/ENGINEER INFORMATION

Pro/e Model Used:

21-033650-018.ASSEM

Drawing Name:

21-033650-018

UNLESS OTHERWISE SPECIFIED	SPECIFICATIONS
LINEAR DIMENSIONS ARE IN INCHES TOLERANCES: .XXXX = ±.0005 ANGLES= ±2° .XXX = ±.010 .XX = ±.03 .X = ±.1	MATERIAL SPEC. N/A
DIM. & TOL. PER ASME Y14.5M; DRM PER MIL-DTL-31000; OTHER Amphenol Stds. PER 9-3800	PROCESS SPEC. SEE NOTE 2
LEGENDS: =FLAG NOTE CALL OUT REFERENCE ONLY	

POS	QTY	PART NUMBER	DESCRIPTION	NOTE
5	1	L-2092-K	INSTALLATION INSTRUCTIONS	2, 3
4	1	10-806165-002	SEALING SLEEVE	2
3	1	21-033727-005	OUTER FERRULE	
2	1	21-033664-18M	INNER CONTACT ASSEMBLY	
1	1	21-033650-18M	OUTER CONTACT ASSEMBLY	

APPROVALS		DATE	PARTS LIST	
PREPARED BY	RATCHFORD	03-May-10	<b>AMPHENOL CORPORATION</b> 40-60 DELAWARE AVENUE SIDNEY, N.Y. 13858	
ENGINEER IN CHARGE	RATCHFORD			
DESIGN MANAGER	SHEPLER		<b>PIN CONTACT ASSEMBLY, INNER,          SIZE 12, COAXIAL,          TYPE TV-R, RG178</b>	
DESIGN ACTIVITY GROUP	MIL-AERO			
THIRD ANGLE PROJECTION			SIZE C	CAGE CODE 77820
			DOCUMENT NO. 21-033650-018	REV. A
			SCALE: 4.0	SHEET 1 OF 1

RELEASE STATE WIP

REVISION A

VERSION 2

REV. A

SHEET 1 OF 1

DOCUMENT NO. 21-033650-018