

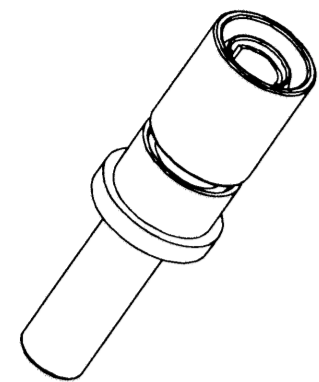
4

3

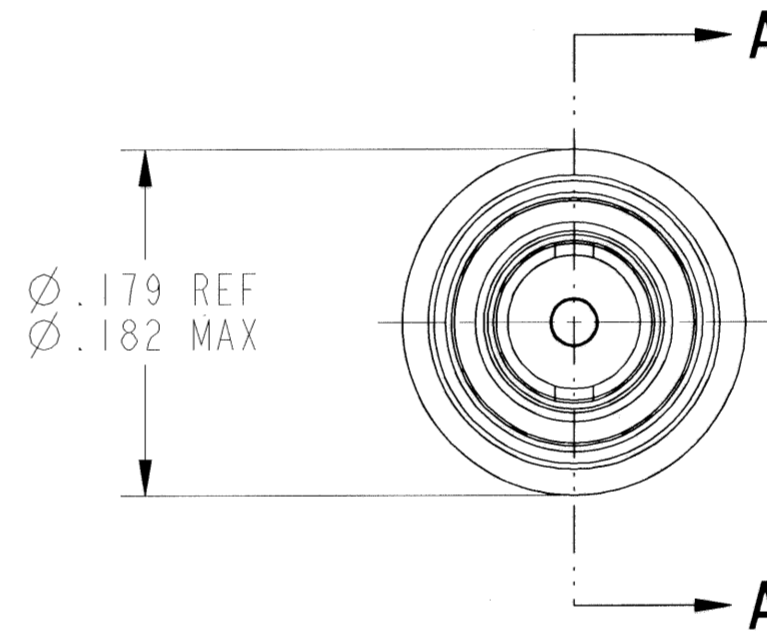
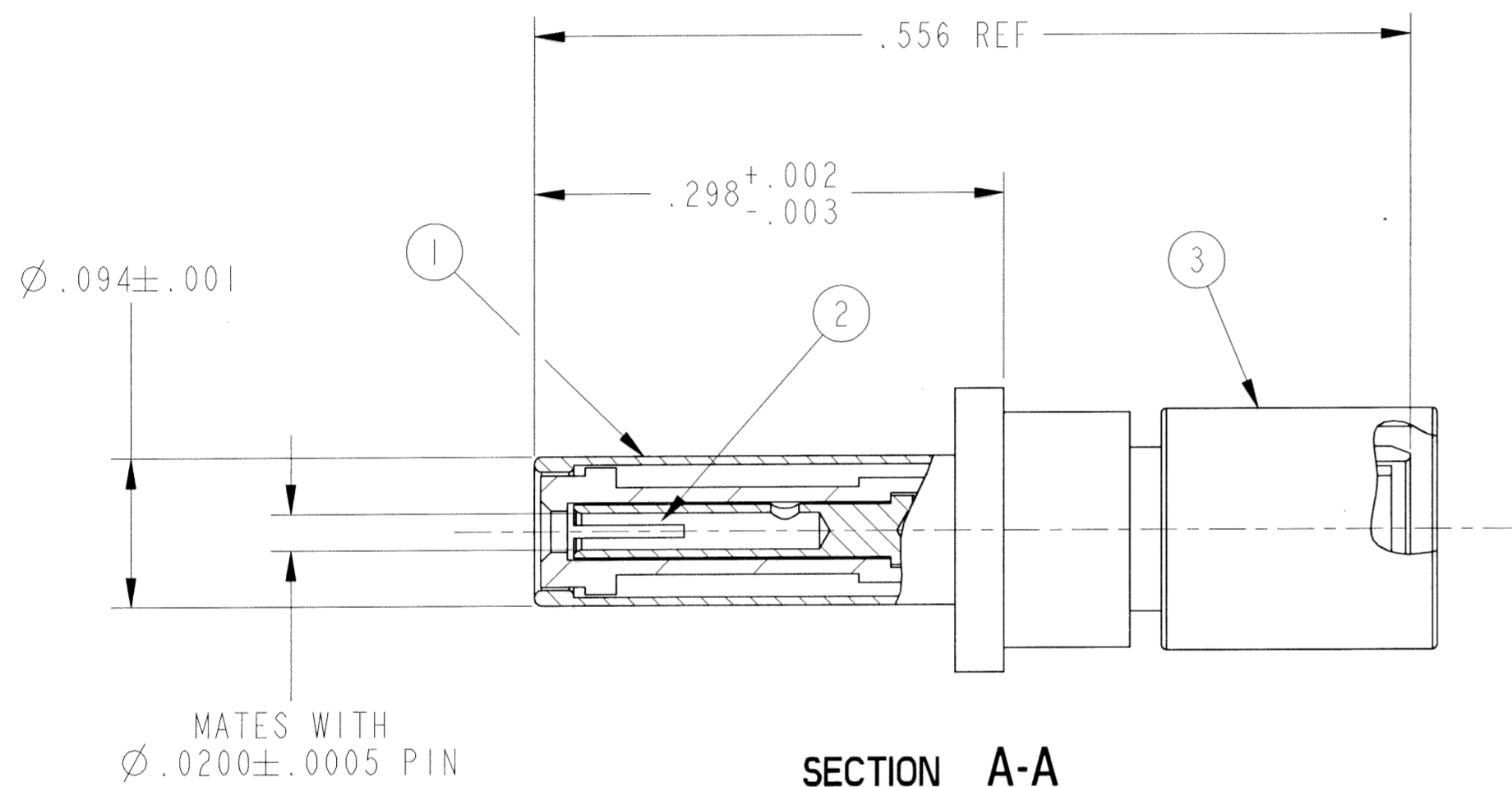
2

1

REVISIONS			
LTR	DESCRIPTION	DATE	APPVD
A	INITIAL RELEASE NUM: <u>R2001-405</u>		



SCALE 4



- 5. MEETS THE APPLICABLE REQUIREMENTS OF M39029/102-558.
- 4. CONTACT TERMINATES RD316 & FILOTEX 124962 COAX CABLE OR EQUIVALENT.
- 3. COMPLETE INSTALLATION INSTRUCTIONS PACKAGED WITH EACH ASSEMBLY.
- 2. INDICATED COMPONENT NOT ILLUSTRATED.
- 1. PROCESS SPEC: 9-5272-23

NOTES:

THE USE OF THIS DOCUMENT IS UNLIMITED. HOWEVER, DOCUMENTS REFERENCED HEREON MAY CONTAIN LIMITED RIGHTS DATA.

POS	QTY	PART NUMBER	DESCRIPTION	NOTE
4	1	L-2092-F	INSTALLATION INSTRUCTIONS	2, 3
3	1	21-33903-544	OUTER FERRULE	
2	1	21-33665-7M	INNER CONTACT ASSEMBLY	
1	1	21-33213-42M	OUTER CONTACT ASSEMBLY	

UNLESS OTHERWISE SPECIFIED	SPECIFICATIONS	PARTS LIST					
LINEAR DIMENSIONS ARE IN INCHES TOLERANCES: .XXXX = ±.0005 .XXX = ±.010 .XX = ±.03 .X = ±.1 ANGLES = ±2° OTHER STANDARDS PER 9-3800 AND DOD-D-1000 THIRD ANGLE PROJECTION	MATERIAL SPEC. N/A	APPROVALS PREPARED RATCHFORD 07-FEB-01	DATE 10-22-01	AMPHENOL CORPORATION <small>BENDIX CONNECTOR OPERATIONS SIDNEY, N.Y.</small> COAX CONTACT ASSEMBLY, SIZE 12, TYPE TV-R			
	PROCESS SPEC. SEE NOTE 1	CHECKED <i>J. Hatchford</i> 10-22-01 MATERIAL <i>N/A Ratchford</i> 10-22-01 APPROVED <i>J. Hatchford</i> 10-22-01	10-22-01				
		APPROVED <i>W.D. Davis</i> 10-26-01	PROF/ENG INFORMATION 21-33651-11.ASSEM 21-33651-17	SIZE C	FSM NO. 77820	DOCUMENT NO. 21-33651-17	REV. A

SCALE: 10:1 REF: 21-33651-11 SHEET 1 OF 1

FAMCODES DATA3: TBD CICS: TBD

4

3

2

1

21-33651-17

DOC NO SH 1 OF 1

A