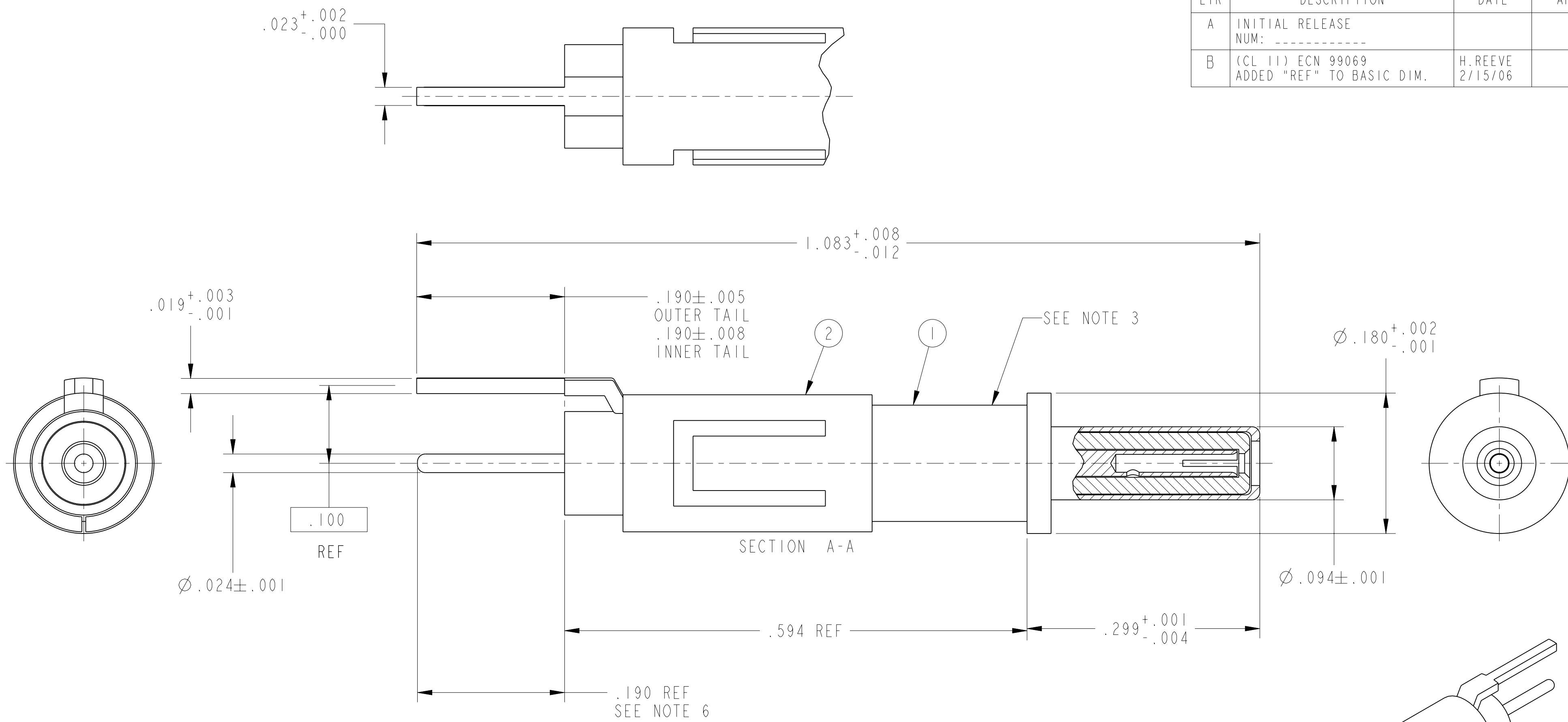


REVISIONS			
LTR	DESCRIPTION	DATE	APPVD
A	INITIAL RELEASE NUM: -----		
B	(CL 11) ECN 99069 ADDED "REF" TO BASIC DIM.	H. REEVE 2/15/06	



7. PROCESS SPEC: 9-6700, 9-7530
6. INDICATED AREA SHALL BE CAPABLE OF MEETING THE SOLDERABILITY REQUIREMENTS OF MIL-STD-202, METHOD 208.
5. ALL DIMENSIONS ARE AFTER PLATING.
4. MATERIAL: CONTACTS- BERYLLIUM COPPER PER ASTM B196, ALLOY C17300, TEMPER TD04
INSULATORS- PTFE PER ASTM 3651 OR EQUIVALENT
TAIL CLIP- BERYLLIUM COPPER PER ASTM B194, ALLOY C17200, TEMPER TD02
3. BLACK INK STAMP TRADEMARK, 9-6700 TYPE IV, PER 9-7530 ON INDICATED SURFACE.
2. PACKAGE PER PRODUCTION PROCESS SHEET.
1. FINISH: GOLD PLATED PER MIL-G-45204 TYPE II, GRADE C, CLASS I
OVER NICKEL PLATE PER QQ-N-290 (50 MICROINCHES THK MIN).

NOTES:

THE USE OF THIS DOCUMENT IS UNLIMITED. HOWEVER, DOCUMENTS REFERENCED HEREON MAY CONTAIN LIMITED RIGHTS DATA.

COMPANY ID: 9	CODED/MS/CUST: N	N/A
INTERNAL: N	LOT NO: N	N/A
DATE CODE: N	SEE DRAW: N	N/A
STAMPING DATA		NEXT ASSEMBLY

UNLESS OTHERWISE SPECIFIED

LINEAR DIMENSIONS ARE IN INCHES

TOLERANCES:

.XXXX = $\pm .0005$

.XXX = $\pm .010$

.XX = $\pm .03$

.X = $\pm .1$

ANGLES = $\pm 2^\circ$

OTHER STANDARDS PER 9-3800 AND DOD-D-1000

THIRD ANGLE PROJECTION

SPECIFICATIONS

MATERIAL SPEC: N/A

PROCESS SPEC: SEE NOTE 7

POS	QTY	PART NUMBER	DESCRIPTION	NOTE
2		21-33691-2	REAR TAIL CLIP	
1		21-33692-5	CONTACT SUB ASSEMBLY	

PARTS LIST

APPROVALS

PREPARED	H. REEVE	15-Feb-06
CHECKED		
MATERIAL		
APPROVED		
APPROVED		

AMPHENOL CORPORATION
BENDIX CONNECTOR OPERATIONS
SIDNEY, N.Y.

CONTACT, PIN, COAX, PCB, SIZE 12, u
ELECTRICAL CONNECTOR,
TYPE M38999

SIZE	FSCM NO.	DOCUMENT NO.	REV.
C	77820	21-33686-5	B

SCALE: 10.0 REF: 21-33914-25 SHEET 1 OF 1

FAMCODES DATA3: FALSE CICS: FALSE