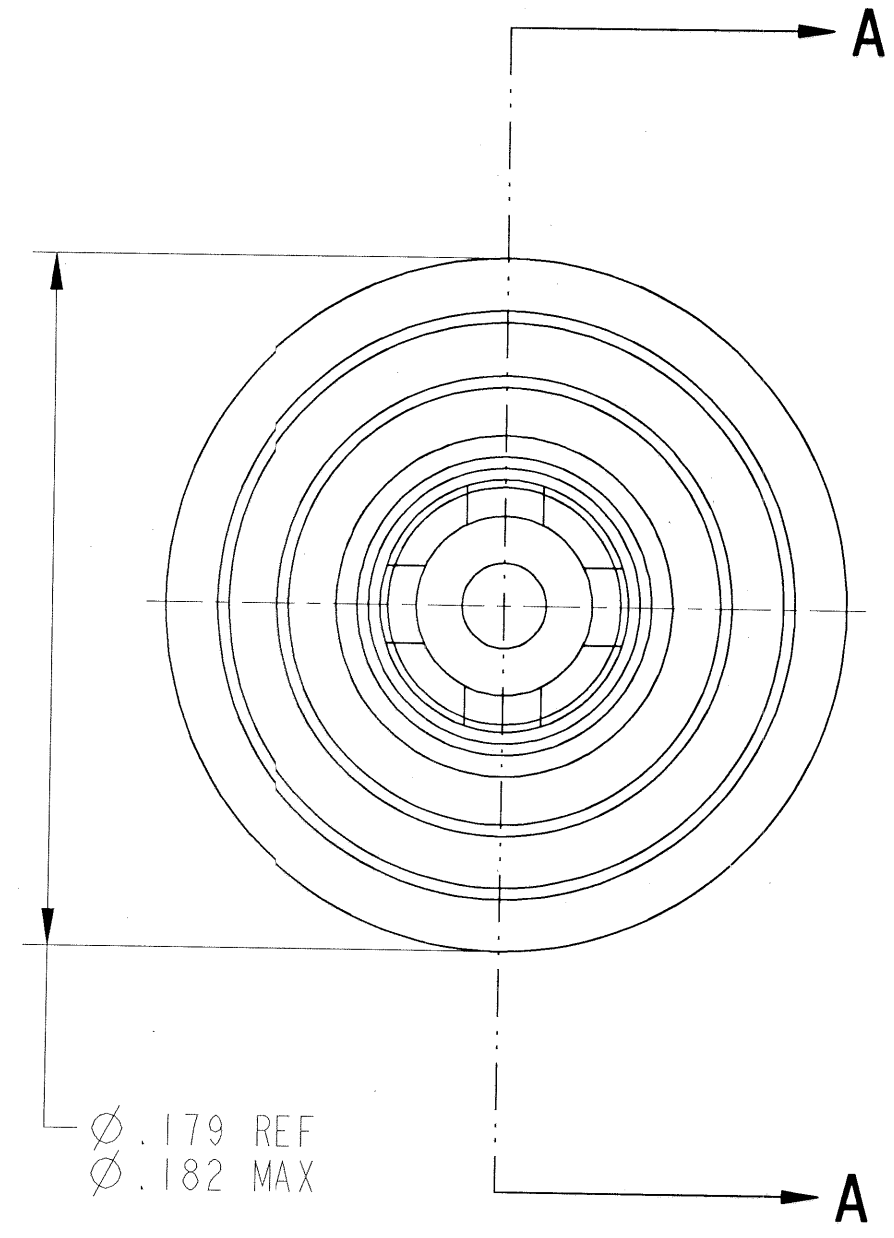
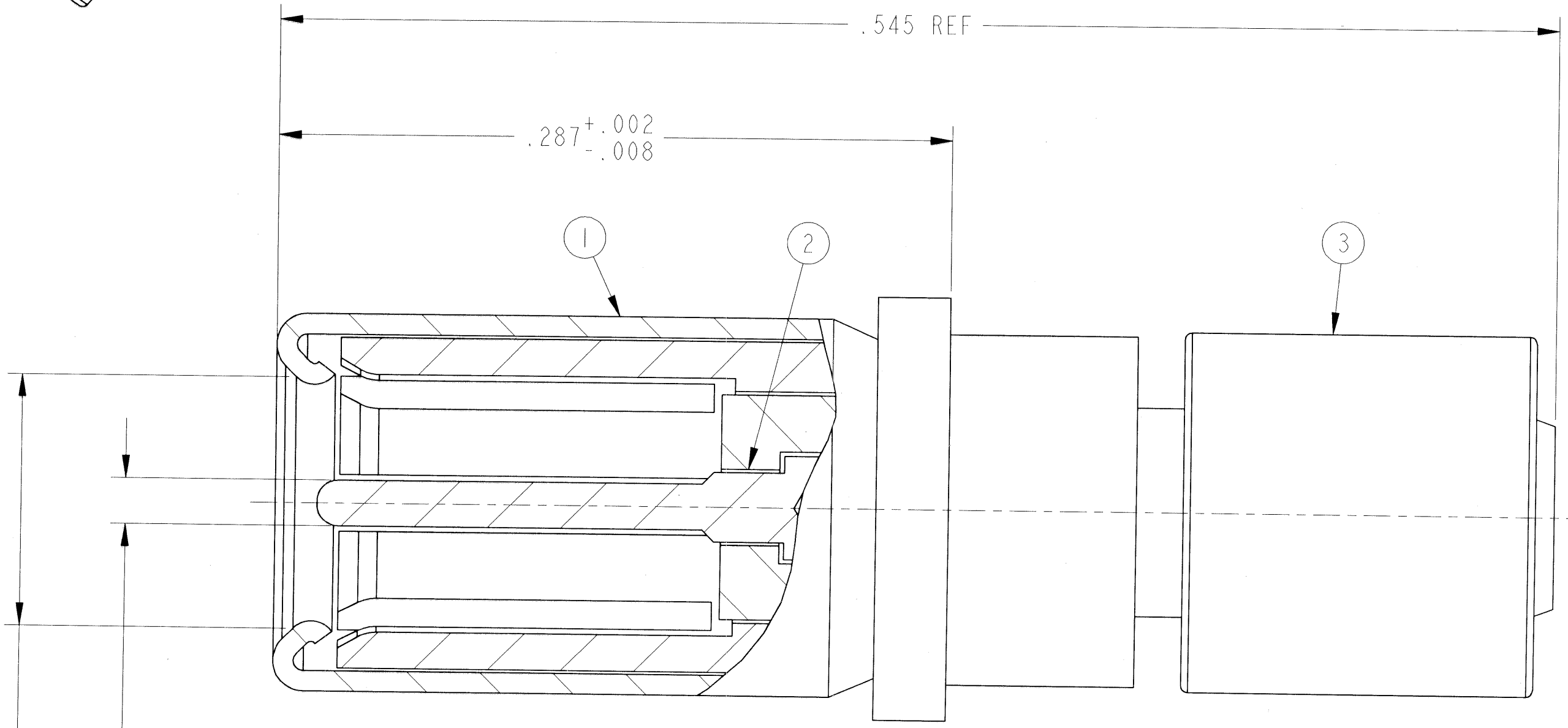
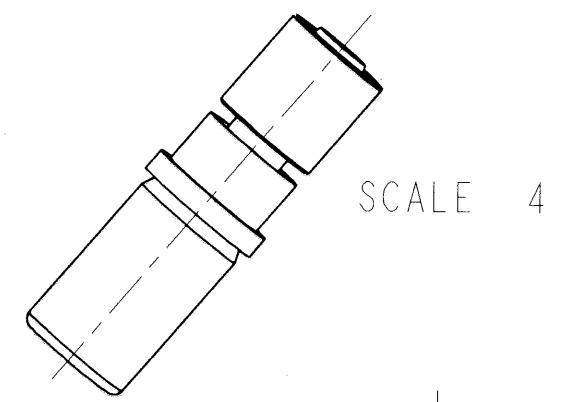


REVISIONS			
LTR	DESCRIPTION	DATE	APPVD
A	INITIAL RELEASE NUM: 22002-26		



SECTION A-A

MATES WITH
Ø .094 ± .001 PIN

5. MEETS THE APPLICABLE REQUIREMENTS OF M39029/27 & /103
4. CONTACT TERMINATES RG178 CABLE OR EQUIVALENT.
3. COMPLETE INSTALLATION INSTRUCTIONS PACKAGED WITH EACH ASSEMBLY. PACKAGE PER PRODUCTION SHEET.
2. INDICATED COMPONENT NOT ILLUSTRATED.
1. PROCESS SPEC: 9-5272-23

NOTES:

THE USE OF THIS DOCUMENT IS UNLIMITED. HOWEVER, DOCUMENTS REFERENCED HEREON MAY CONTAIN LIMITED RIGHTS DATA.

POS	QTY	PART NUMBER	DESCRIPTION	NOTE
5	1	L-2092-K	INSTALLATION INSTRUCTIONS	2,3
4	1	10-806165-2	SEALING SLEEVE	2
3	1	21-33727-5	OUTER FERRULE	
2	1	21-33227-1M	INNER CONTACT ASSEMBLY	
1	1	21-33729-13M	OUTER CONTACT ASSEMBLY	

UNLESS OTHERWISE SPECIFIED	SPECIFICATIONS	PARTS LIST			
LINEAR DIMENSIONS ARE IN INCHES TOLERANCES: .XXXX = ± .0005 .XXX = ± .010 .XX = ± .03 .X = ± .1 ANGLES = ± 2° OTHER STANDARDS PER 9-3800 AND DOD-D-1000 THIRD ANGLE PROJECTION	MATERIAL SPEC.	APPROVALS	DATE	AMPHENOL CORPORATION <small>BENDIX CONNECTOR OPERATIONS SIDNEY, N.Y.</small>	
	N/A	PREPARED: RATCHFORD CHECKED: <i>J. Ratchford</i> 1/17/02 MATERIAL: <i>N/A</i> APPROVED: <i>J. Ratchford</i> 1/17/02	14-NOV-01	COAX CONTACT ASSEMBLY, SIZE 12, TYPE JT-R, RG178 CABLE, MATCHED	
	PROCESS SPEC.	SEE NOTE 1	APPROVED: <i>Al Davis</i> 1/17/02 <small>PROJ/ENG INFORMATION 21-33729-18_TOP_ASY_ASSEM 21-33729-18_TOP_ASY</small>	SIZE: C FSCM NO.: 77820 DOCUMENT NO.: 21-33729-18	REV. A
			SCALE: 20.0	REF: 21-33650-1	SHEET 1 OF 1

N/A
N/A
NEXT ASSEMBLY

FAMCODES DATA3: TBD CICS: TBD

21-33729-18

A