

REV. A		SHEET 1 OF 1		DOCUMENT NO. 21-33733-4	
REVISIONS					
LTR	DESCRIPTION			DATE	
A	INITIAL RELEASE				

21-33733-4

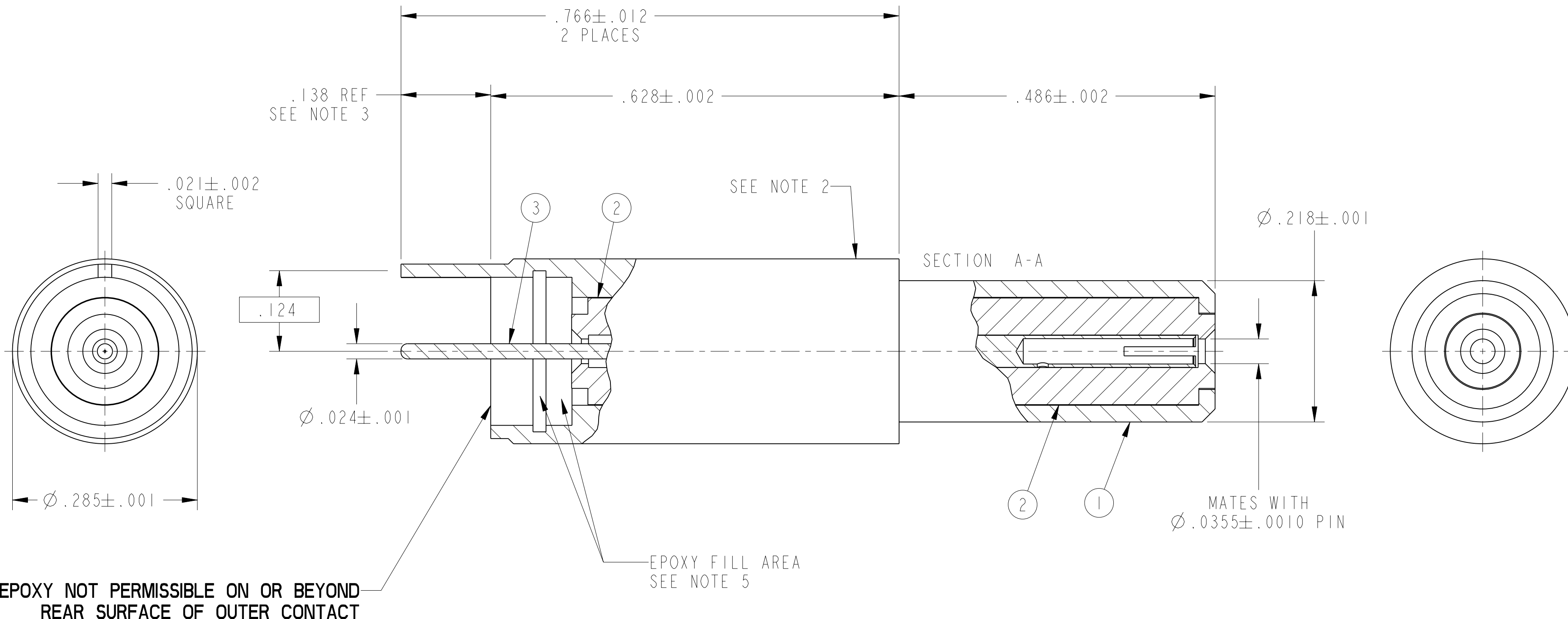
SHEET 1 OF 1

REV. A

C

B

A



EPOXY NOT PERMISSIBLE ON OR BEYOND REAR SURFACE OF OUTER CONTACT

6. ALL DIMENSIONS ARE AFTER PLATING.
5. FILL INDICATED AREA WITH EPOXY 9-4954-5 TO HOLD INNER COMPONENTS IN PLACE. EPOXY WICKING ON OR BEYOND REAR SURFACE OF OUTER CONTACT NOT PERMISSIBLE. CURE EPOXY AT 250°F FOR 3 HOURS.
4. PROCESS SPEC:
9-4954-5, 9-6700, 9-7530, 9-8825
3. INDICATED AREA SHALL BE CAPABLE OF MEETING THE SOLDERABILITY REQUIREMENTS OF 9-8825 AFTER STEAM AGING.
2. BLACK INK STAMP TRADEMARK 9-6700 TYPE IV PER 9-7530, ON INDICATED SURFACE.
1. PACKAGE PER PRODUCTION PROCESS SHEET.

NOTES:

THE USE OF THIS DOCUMENT IS UNLIMITED. HOWEVER, DOCUMENTS REFERENCED HEREON MAY CONTAIN LIMITED RIGHTS DATA.

RELEASED / Mar . 17 2004, 10:49 AM

N/A	PRO/ENGINEER INFORMATION
N/A	Pro/e Model Used: TV_COAX_8P_ASY_PCB-4_ASSEM
NEXT ASSEMBLY	Drawing Name: 21-33733-4_TV_COAX_ASY_PCB

UNLESS OTHERWISE SPECIFIED
 LINEAR DIMENSIONS ARE IN INCHES
 TOLERANCES:
 .XXXX = ±.0005 ANGLES= ±2°
 .XXX = ±.010
 .XX = ±.03
 .X = ±.1
 DIM. & TOL. PER ASME Y14.5M;
 DRM PER MIL-DTL-31000;
 OTHER Amphenol Sds. PER 9-3800
 LEGENDS:
 = FLAG NOTE CALL OUT
 REFERENCE ONLY

SPECIFICATIONS
 MATERIAL SPEC.
 N/A
 PROCESS SPEC.
 SEE NOTE 4

POS	QTY	PART NUMBER	DESCRIPTION	NOTE
3	1	21-33733-24	INNER CONTACT	
2	2	21-1305-33	INSULATOR	
1	1	21-33733-27	OUTER CONTACT	

APPROVALS	DATE
PREPARED BY LRATCHFORD	26-Feb-04
ENGINEER IN CHARGE LRATCHFORD	
DESIGN MANAGER ADAVIS	
DESIGN ACTIVITY GROUP MIL AERO	
THIRD ANGLE PROJECTION	

PARTS LIST			
AMPHENOL CORPORATION 40-60 DELAWARE AVENUE SIDNEY, N.Y. 13838			
CONTACT, PIN, COAX, SIZE 8, PCB, TYPE M38999 I & III, EPOXY FILLED			
SIZE C	CAGE CODE 77820	DOCUMENT NO. 21-33733-4	REV. A
SCALE: 8.0		REF: 21-33733-2	SHEET 1 OF 1

D

C

REV. A

SHEET 1 OF 1

B

21-33733-4

A

U

FORMAT: C:\U.L-REV.B