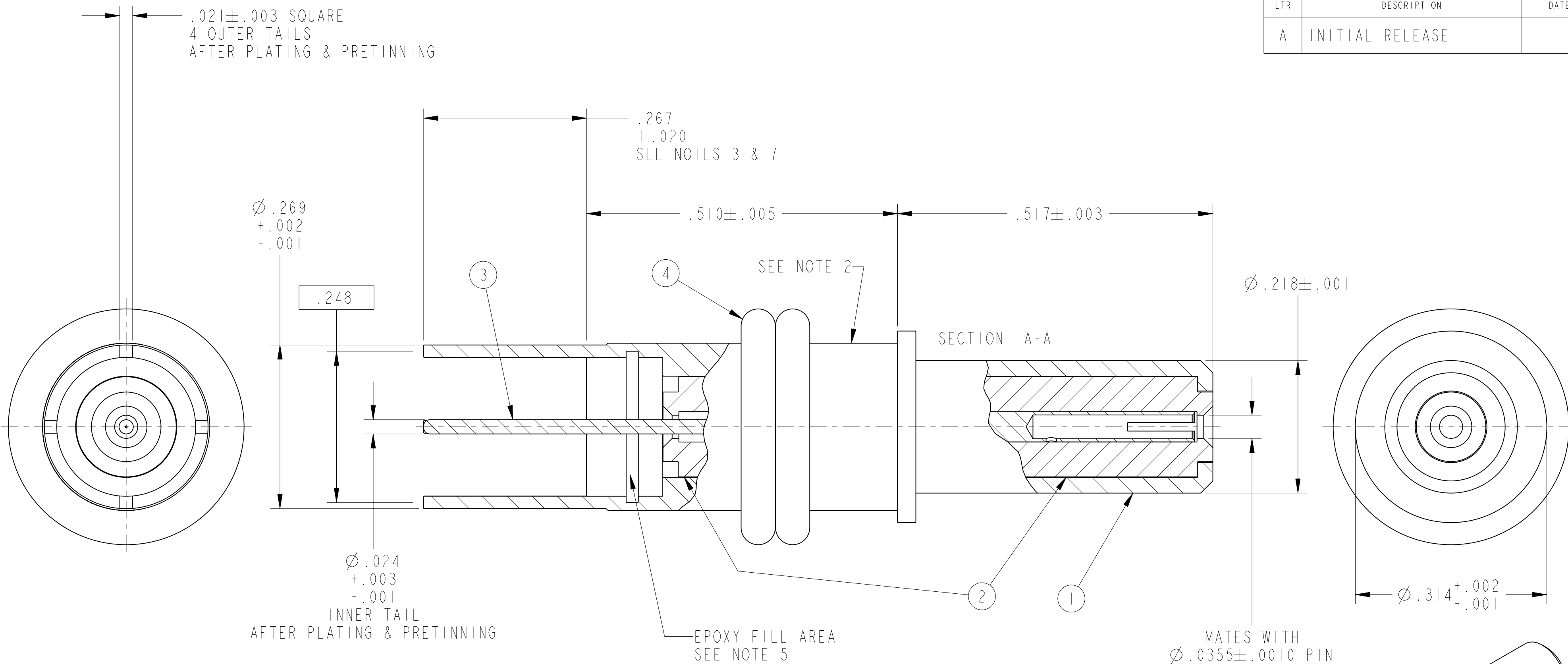
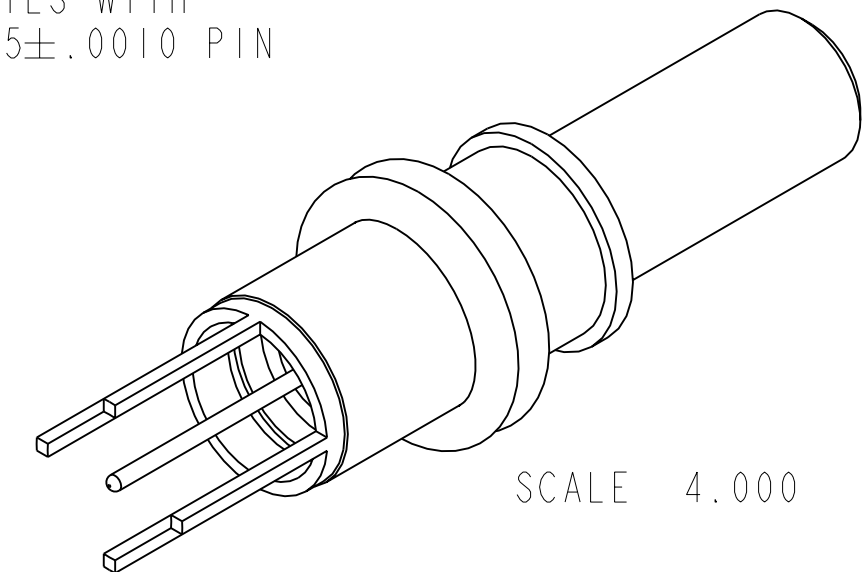


REV. A		SHEET 1 OF 1		21-33733-5	
REVISIONS					
LTR	DESCRIPTION			DATE	
A	INITIAL RELEASE				



7. PRETIN INDICATED AREA TO WITHIN .075 MAX OF THE CONTACT BODY PER 9-7894 (RECOMMENDED PRETINNING IN NITROGEN INERTING WAVE SOLDER POT)
6. ALL DIMENSIONS ARE AFTER PLATING.
5. FILL INDICATED AREA WITH EPOXY 9-4954-5 TO HOLD INNER COMPONENTS IN PLACE. .030 MAX EPOXY WICKING BEYOND CONTACT BODY PERMISSIBLE. CURE EPOXY AT 250°F FOR 3 HOURS.
4. PROCESS SPEC:  
9-4954-5, 9-6700, 9-7530, 9-8825, 9-7894
3. INDICATED AREA SHALL BE CAPABLE OF MEETING THE SOLDERABILITY REQUIREMENTS OF 9-8825 AFTER STEAM AGING.
2. BLACK INK STAMP TRADEMARK 9-6700 TYPE IV PER 9-7530, ON INDICATED SURFACE.
1. PACKAGE PER PRODUCTION PROCESS SHEET.

**NOTES:**  
THE USE OF THIS DOCUMENT IS UNLIMITED. HOWEVER, DOCUMENTS REFERENCED HEREON MAY CONTAIN LIMITED RIGHTS DATA.



POS	QTY	PART NUMBER	DESCRIPTION	NOTE
4	2	21-33976-1	O-RING	
3	1	21-33733-54	INNER CONTACT	
2	2	21-1305-33	INSULATOR	
1	1	21-33733-53	OUTER CONTACT	

UNLESS OTHERWISE SPECIFIED  
 SPECIFICATIONS  
 MATERIAL SPEC. N/A  
 PROCESS SPEC. SEE NOTE 4  
 LINEAR DIMENSIONS ARE IN INCHES  
 TOLERANCES:  
 .XXXX = ±.0005 ANGLES= ±2°  
 .XXX = ±.010  
 .XX = ±.03  
 .X = ±.1  
 DIM. & TOL. PER ASME Y14.5M;  
 DRM PER MIL-DTL-31000;  
 OTHER Amphenol Sds. PER 9-3800  
 LEGENDS:  
 =FLAG NOTE CALL OUT REFERENCE ONLY

APPROVALS		DATE
PREPARED BY	LRATCHFORD	14-Jul-04
ENGINEER IN CHARGE	LRATCHFORD	
DESIGN MANAGER	ADAVIS	
DESIGN ACTIVITY GROUP	MIL AERO	
THIRD ANGLE PROJECTION		

**PARTS LIST**

**AMPHENOL CORPORATION**  
 40-60 DELAWARE AVENUE  
 SIDNEY, N.Y. 13838

**CONTACT, PIN, COAX,  
 SIZE 8, PCB,  
 TYPE M38999 I & III, EPOXY FILLED**

SIZE C	CAGE CODE 77820	DOCUMENT NO. 21-33733-5	REV. A
SCALE: 8.0 REF: 21-33733-2		SHEET 1 OF 1	

N/A	PRO/ENGINEER INFORMATION
N/A	Pro/e Model Used: TV_COAX_8P_ASY_PCB-5_ASSEM
N/A	Drawing Name: 21-33733-5_TV_COAX_ASY_PCB
N/A	NEXT ASSEMBLY

RELEASED / Jul . 22 2004, 04:43 PM

DOCUMENT NO. 21-33733-5 SHEET 1 OF 1 REV. A

DOCUMENT NO. 21-33733-5 SHEET 1 OF 1 REV. A