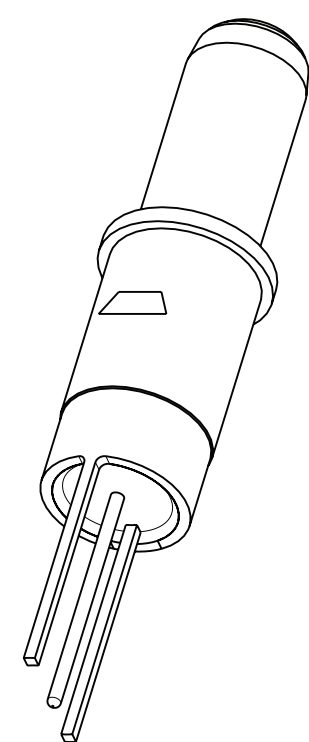
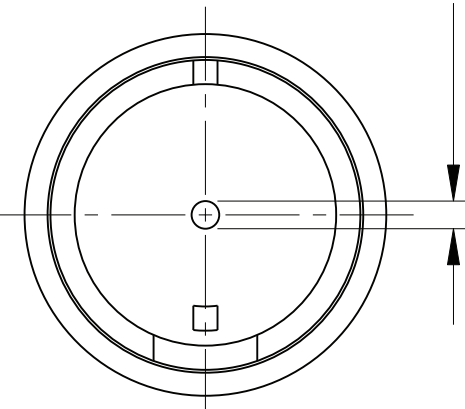
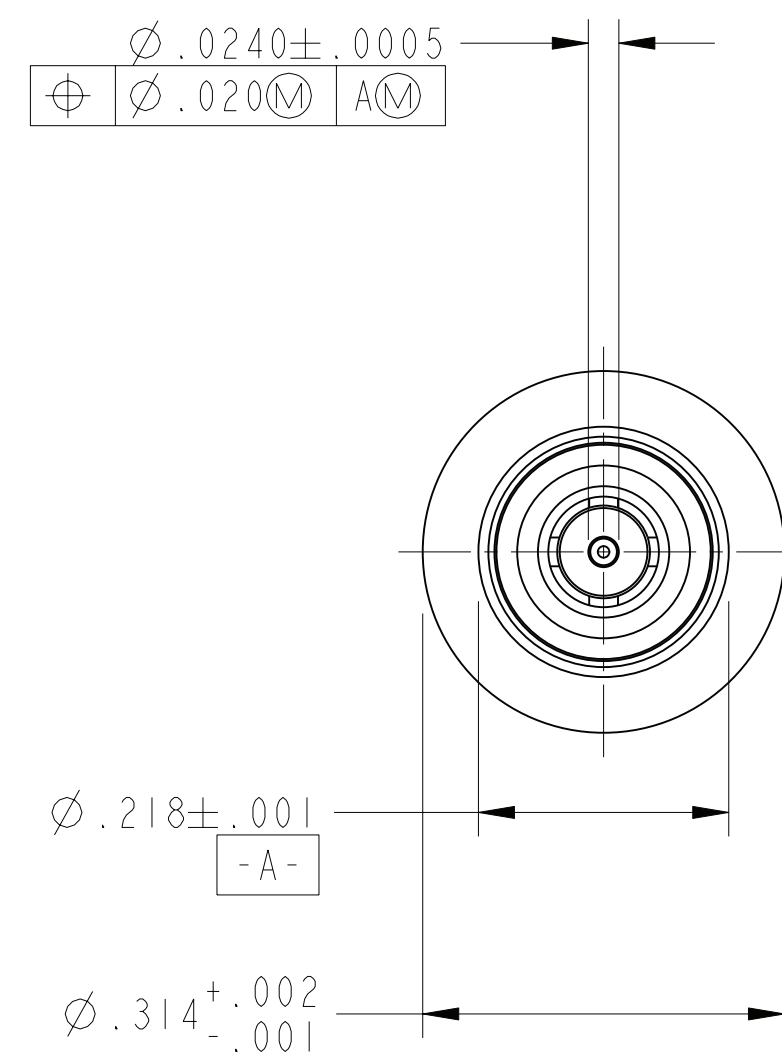
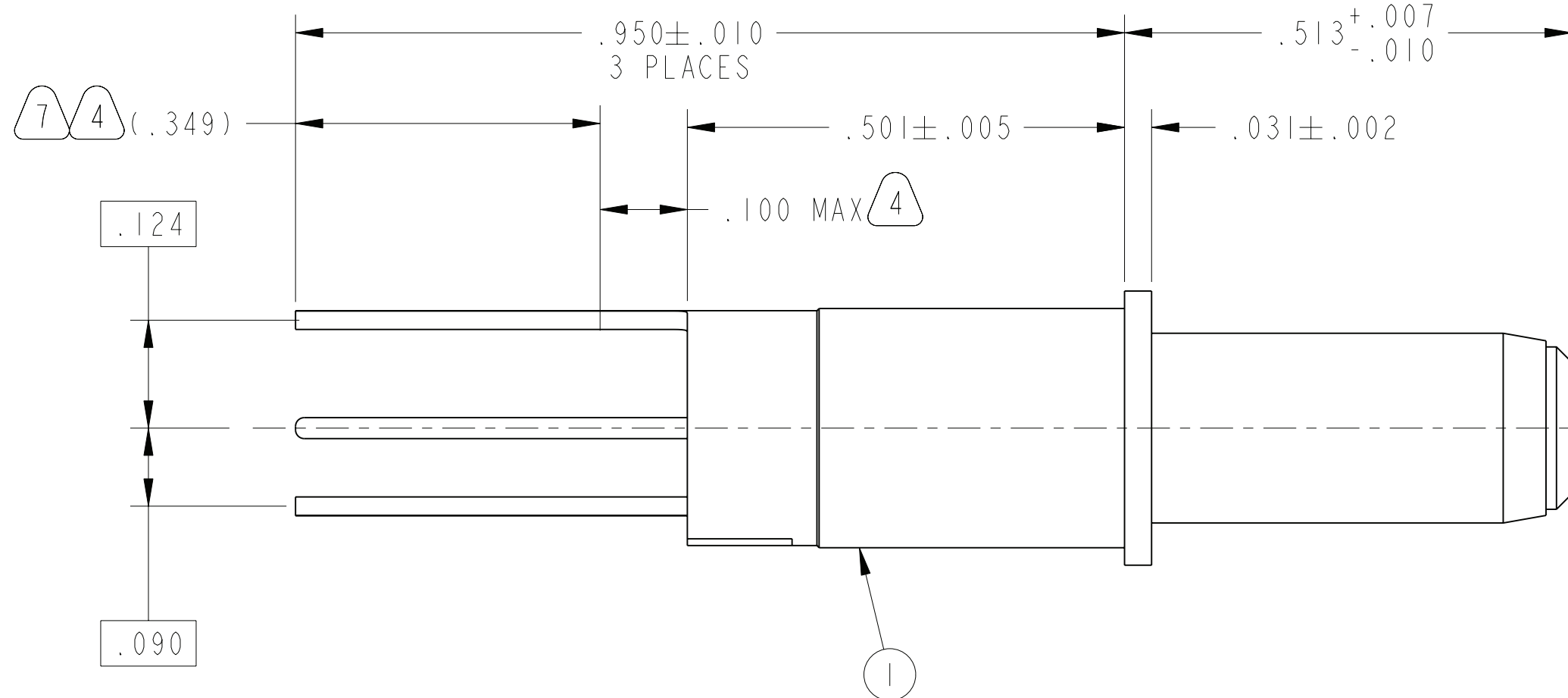
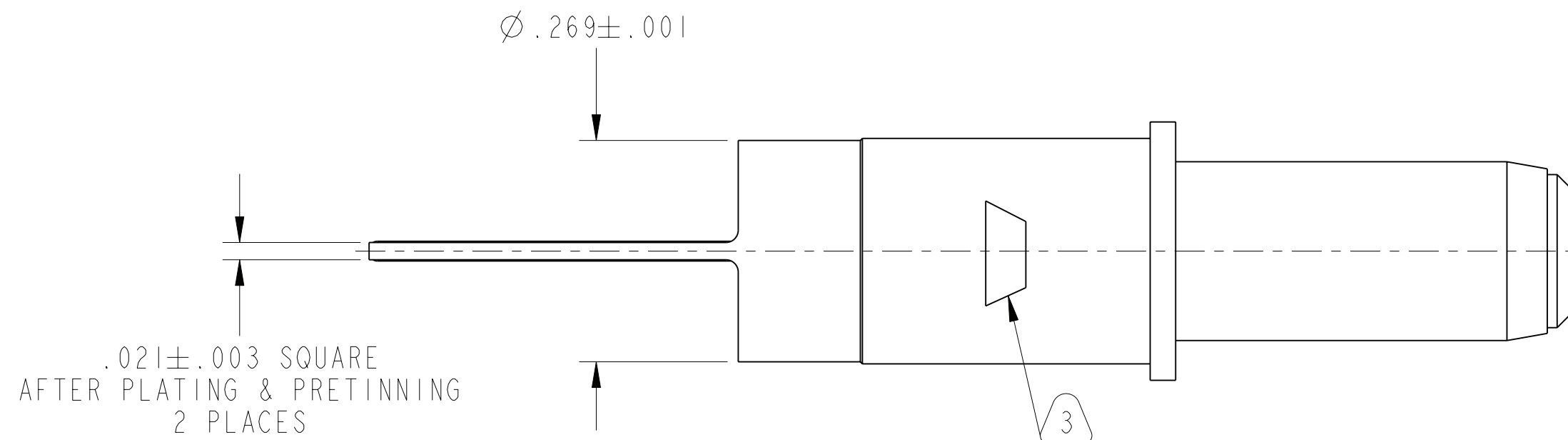


REV. B	SHEET 1 OF 1	DOCUMENT NO. 100-82830-1Z 21-033828-001
REVISIONS		
LTR	DESCRIPTION	DATE
A	INITIAL RELEASE	11/20/06
B	(CL II) ADDED DIA .024 DIM ECN: A7622-0000	12/22/09



SCALE 3.000



7. INDICATED AREA SHALL BE CAPABLE OF MEETING THE SOLDERABILITY REQUIREMENTS OF 9-8825 AFTER STEAM AGING.
6. ALL DIMENSIONS ARE AFTER PLATING AND PRETINNING.
5. EPOXY ALLOWED TO WICK .030 MAX BEYOND CONTACT BODY.
4. INDICATED AREA PRETINNED TO WITHIN .100 MAX OF THE CONTACT BODY.
3. TRADEMARK BLACK INK STAMPED ON INDICATED SURFACE.
2. PACKAGE PER PRODUCTION PROCESS SHEET.
1. FINISH: GOLD PLATED PER MIL-G-45204 TYPE II, GRADE C, CLASS I OVER NICKEL PLATE PER QQ-N-290 CLASS I (50-200 MICROINCHES THK)

**NOTES:**

THE USE OF THIS DOCUMENT IS UNLIMITED. HOWEVER, DOCUMENTS REFERENCED HEREON MAY CONTAIN LIMITED RIGHTS DATA.

N/A  
NEXT ASSEMBLY

PRO/ENGINEER INFORMATION  
Pro/e Model Used:  
21-033828-001.ASSEM  
Drawing Name:  
21-033828-001

UNLESS OTHERWISE SPECIFIED  
SPECIFICATIONS  
MATERIAL SPEC. N/A  
PROCESS SPEC. N/A

LINEAR DIMENSIONS ARE IN INCHES  
TOLERANCES:  
.XXXX = ±.0005 ANGLES= ±2°  
.XXX = ±.010  
.XX = ±.03  
.X = ±.1

DIM. & TOL. PER ASME Y14.5M;  
DRM PER MIL-DTL-31000;  
OTHER Amphenol Stds. PER 9-3800

LEGENDS:  
= FLAG NOTE CALL OUT REFERENCE ONLY

I	I	21-033828-001M	CONTACT, TRIAX, PIN	
POS	QTY	PART NUMBER	DESCRIPTION	NOTE
PARTS LIST				
<b>AMPHENOL CORPORATION</b> 40-60 DELAWARE AVENUE SIDNEY, N.Y. 13858				
<b>CONTACT, PIN, TRIAX, SIZE 8, PCB, TYPE M38999 I &amp; III</b>				
SIZE C	CAGE CODE 77820	DOCUMENT NO. 21-033828-001	REV. B	
SCALE: 6.0		REF. 21-33914-25	SHEET 1 OF 1	

