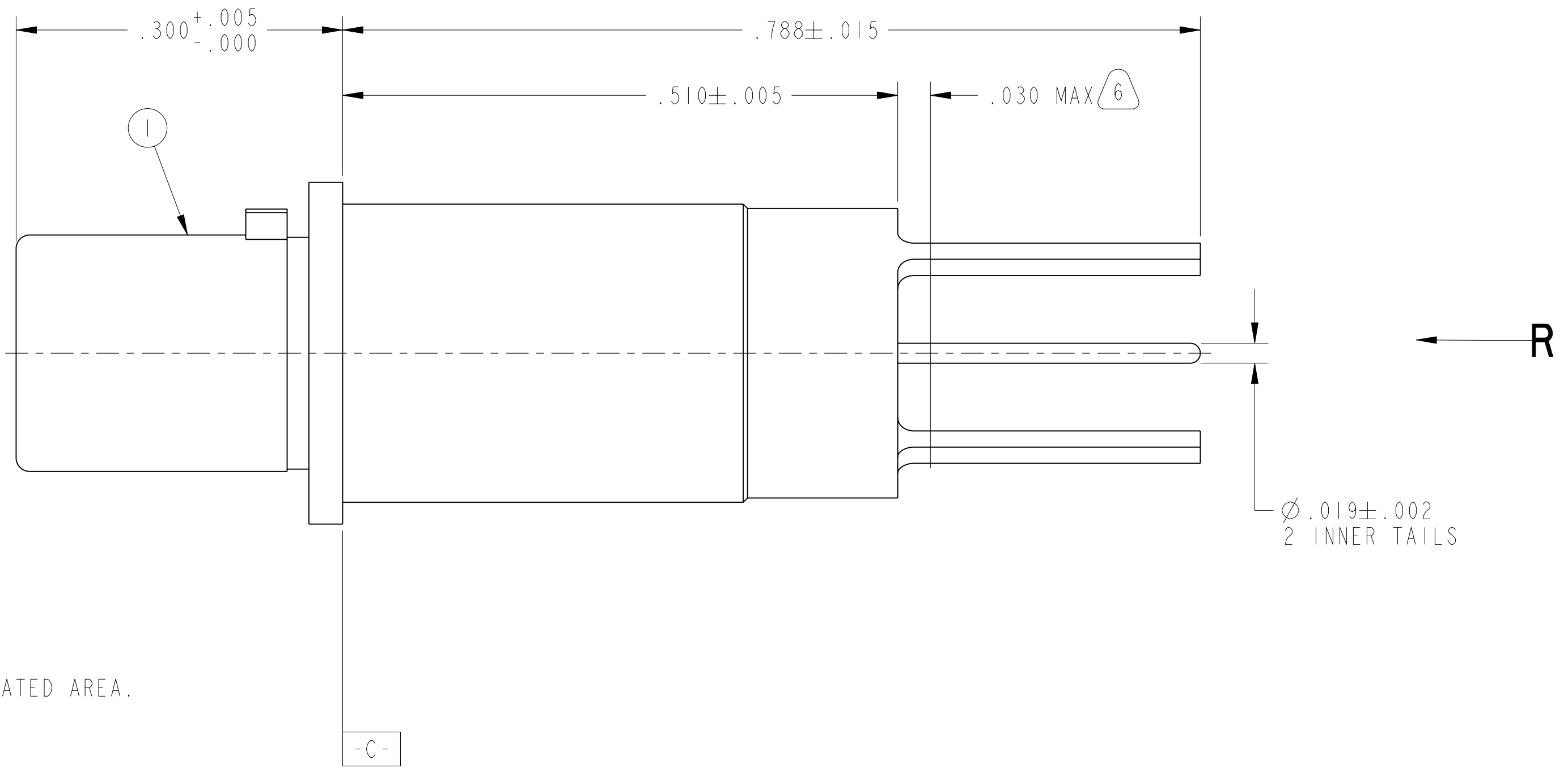
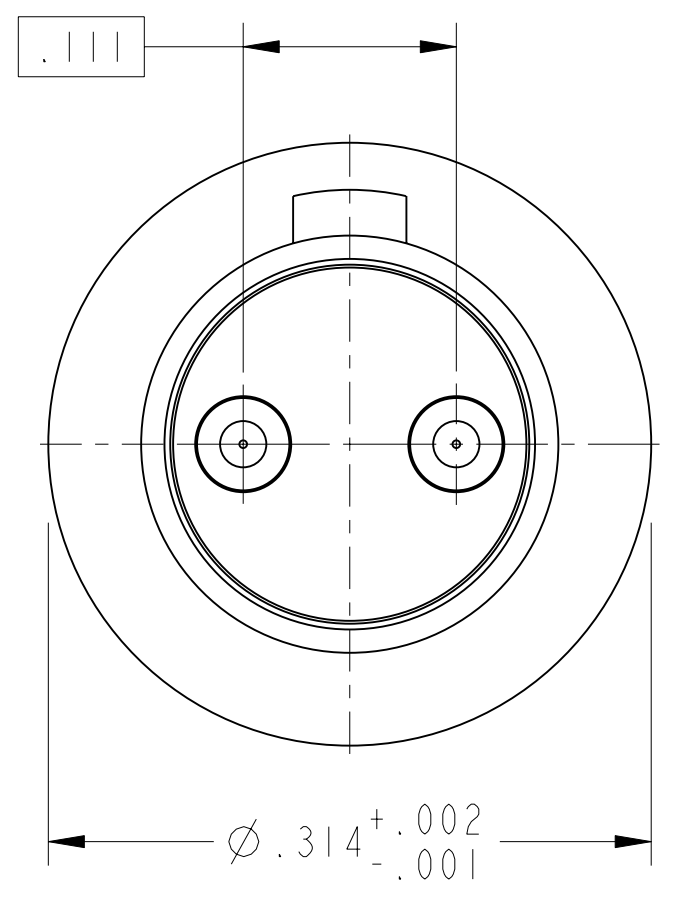
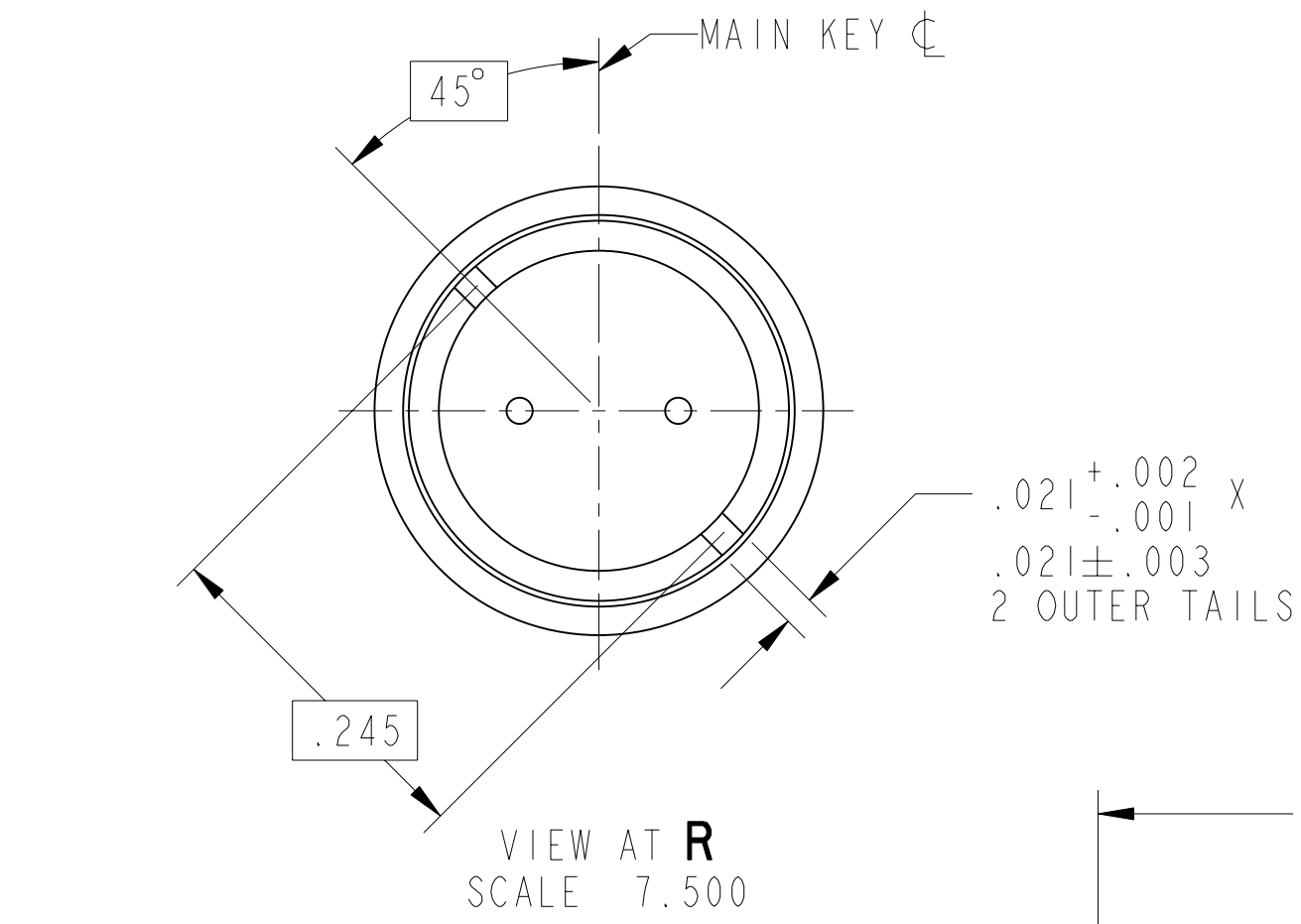


REV. A	SHEET 1 OF 1	DOCUMENT NO. 21-033834-031
REVISIONS M		
LTR	DESCRIPTION	DATE
A	INITIAL RELEASE	-

21-033834-031
SHEET 1 OF 1
REV. A



- 6. EPOXY MAY BE PRESENT ON CONTACT TAILS IN INDICATED AREA.
- 5. ALL DIMENSIONS ARE AFTER PLATING.
- 4. MATES WITH M38999 QUADRAX SOCKETS 21-033385-051 & OTHERS.
- 3. MATERIALS:
OUTER & INNER CONTACTS- BERYLLIUM COPPER PER ASTM-B-196
FRONT INSULATOR & SPACER INSULATOR- TFE RESIN PER AMS 3651
- 2. FINISH:
GOLD PLATED PER MIL-G-45204 TYPE II, GRADE C, CLASS I (.000050 MIN)
OVER NICKEL PLATE PER QQ-N-290 (.000050 MIN).
- 1. CONTACTS MEET THE ENVELOPE DIMENSIONAL REQUIREMENTS OF M39029/90.

NOTES:

THE USE OF THIS DOCUMENT IS UNLIMITED. HOWEVER, DOCUMENTS REFERENCED HEREON MAY CONTAIN LIMITED RIGHTS DATA.

RELEASED / Jun . 21 2012, 4:44:10 PM

DOCUMENT NO. 21-033834-031 SHEET 1 OF 1 REV. A

10-628485-803X NEXT ASSEMBLY

PRO/ENGINEER INFORMATION
Pro/e Model Used:
21-033834-031.ASSEM
Drawing Name:
21-033834-031

UNLESS OTHERWISE SPECIFIED	SPECIFICATIONS
LINEAR DIMENSIONS ARE IN INCHES TOLERANCES: .XXXX = ±.0005 ANGLES= ±2° .XXX = ±.010 .XX = ±.03 .X = ±.1	MATERIAL SPEC. N/A
DIM. & TOL. PER ASME Y14.5M; DRM PER MIL-DTL-31000; OTHER Amphenol Stds. PER 9-3800	PROCESS SPEC. N/A
LEGENDS: = FLAG NOTE CALL OUT REFERENCE ONLY	

I	I	21-033834-031M	CONTACT, PIN, QUADRAX, PCB	NOTE
POS	QTY	PART NUMBER	DESCRIPTION	
PARTS LIST				
AMPHENOL CORPORATION 40-60 DELAWARE AVENUE SIDNEY, N.Y. 13858 CONTACT, PIN, D. TWINAX, ELECTRICAL CONNECTOR, TYPE M38999 I & III, PCB				
APPROVALS	DATE			
PREPARED BY D. PHILLIPS	18-Jun-12			
ENGINEER IN CHARGE L. RATCHFORD				
DESIGN MANAGER E. HICKEY				
DESIGN ACTIVITY GROUP CI				
THIRD ANGLE PROJECTION				
SIZE C	CAGE CODE 77820	DOCUMENT NO. 21-033834-031	REV. A	
SCALE: 10.0	REF. 21-033398-251	SHEET 1 OF 1		

DOCUMENT NO. 21-033834-031
REVISION A
VERSION 3
Eng. PDM Information For Reference Only