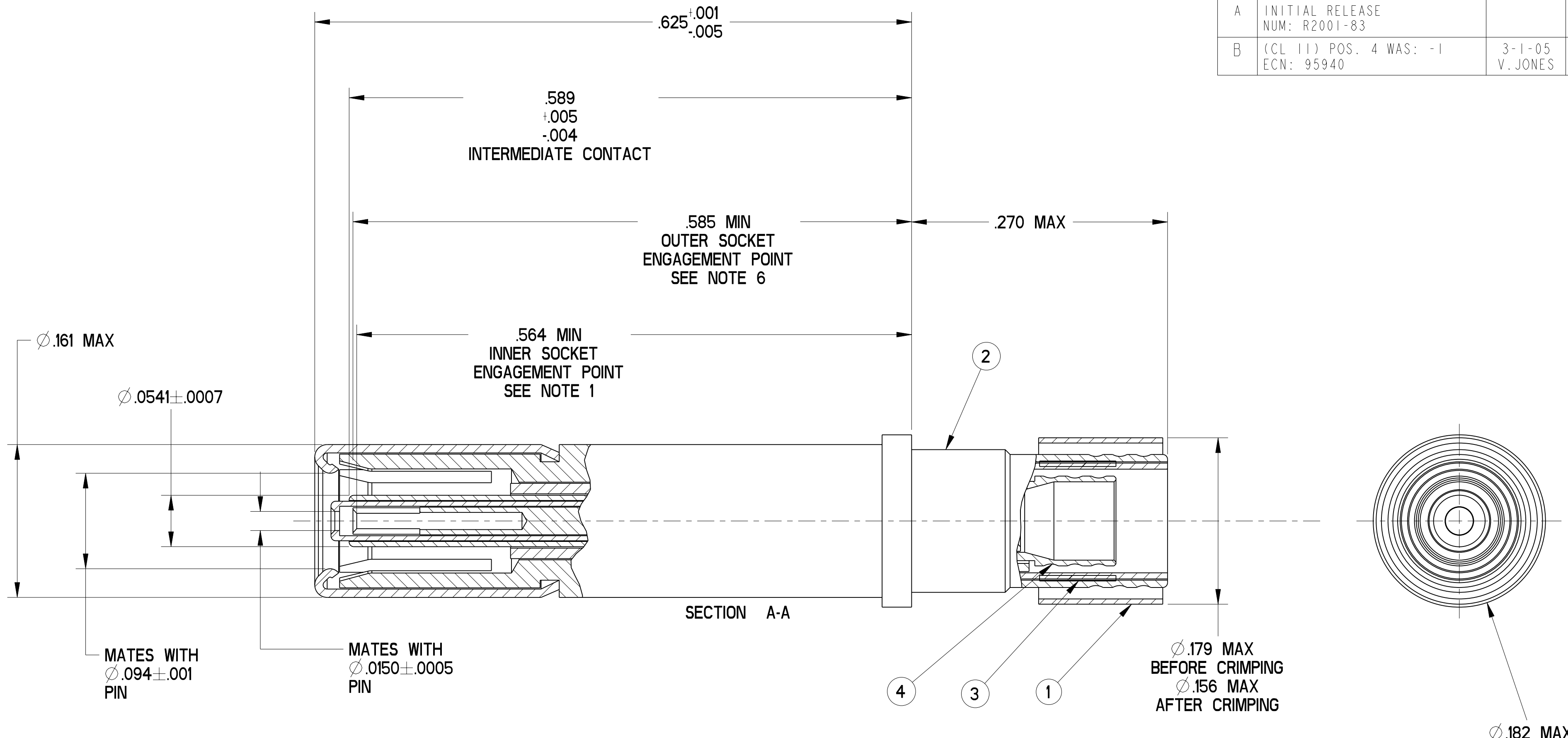


REVISIONS			
LTR	DESCRIPTION	DATE	APPVD
A	INITIAL RELEASE NUM: R2001-83		
B	(CL 11) POS. 4 WAS: -1 ECN: 95940	3-1-05 V. JONES	



- 6. INDICATED DIMENSION IS FROM THE REAR OF THE OUTER CONTACT SHOULDER TO THE POINT AT WHICH A $\varnothing.0940 \pm .0002$ SQUARE ENDED PIN ENGAGES THE OUTER SOCKET CONTACT SPRING.
- 5. MATES WITH TWINAX & TRIAX PIN CONTACTS 21-33909-XX (JN1104-75T INTERFACE).
- 4. TERMINATES TWINAX CABLE 0024A0024 (CHEMINAX) OR EQUIVALENT.
- 3. INDICATED COMPONENT IS NOT ILLUSTRATED. COMPLETE INSTALLATION INSTRUCTIONS PACKAGED WITH EACH ASSEMBLY. PACKAGE PER PRODUCTION PROCESS SHEET.
- 2. PROCESS SPEC:
TEST 9-5272-36
- 1. INDICATED DIMENSION IS FROM THE REAR OF THE OUTER CONTACT SHOULDER TO THE POINT AT WHICH A $\varnothing.0150 \pm .0002$ SQUARE ENDED PIN ENGAGES THE INNER SOCKET CONTACT SPRING.

NOTES:

THE USE OF THIS DOCUMENT IS UNLIMITED. HOWEVER, DOCUMENTS REFERENCED HEREON MAY CONTAIN LIMITED RIGHTS DATA.

COMPANY ID: 9	CODED/MS/CUST: N	N/A
INTERNAL: N	LOT NO: N	N/A
DATE CODE: N	SEE DRAW: N	N/A
STAMPING DATA		NEXT ASSEMBLY

POS	QTY	PART NUMBER	DESCRIPTION	NOTE
5	1	21-33628-9	INSTALLATION INSTRUCTIONS	3
4	1	21-33603-11	INNER CONTACT ASSEMBLY	
3	1	21-33765-66	FERRULE, INTERMEDIATE	
2	1	21-33750-4	OUTER CONTACT ASSEMBLY	
1	1	21-33765-551	FERRULE, OUTER	

UNLESS OTHERWISE SPECIFIED	SPECIFICATIONS	PARTS LIST			
LINEAR DIMENSIONS ARE IN INCHES TOLERANCES: .XXXX = $\pm .0005$.XXX = $\pm .010$.XX = $\pm .03$.X = $\pm .1$ ANGLES = $\pm 2^\circ$ OTHER STANDARDS PER 9-3800 AND DOD-D-1000 THIRD ANGLE PROJECTION	MATERIAL SPEC.	C. APPROVALS		DATE	
	N/A	PREPARED	RATCHFORD	07-Dec-00	
	PROCESS SPEC.	CHECKED	L. RATCHFORD	3-15-01	
	SEE NOTE 2	MATERIAL	N/A L.R.	3-15-01	
		APPROVED	L. RATCHFORD	3-15-01	
		APPROVED	L. RATCHFORD	3-15-01	
		PRO/ENG INFORMATION		SIZE	FSCM NO.
		TW_SKT_ASY_28.ASSEM		C	77820
		21-33908-28_ASY		DOCUMENT NO.	21-33908-28
				REV.	B
				SCALE: 12.0	REF: 21-33908-12
				SHEET 1 OF 1	

FAMCODES DATA3: FALSE CICS: FALSE

21-33908-28