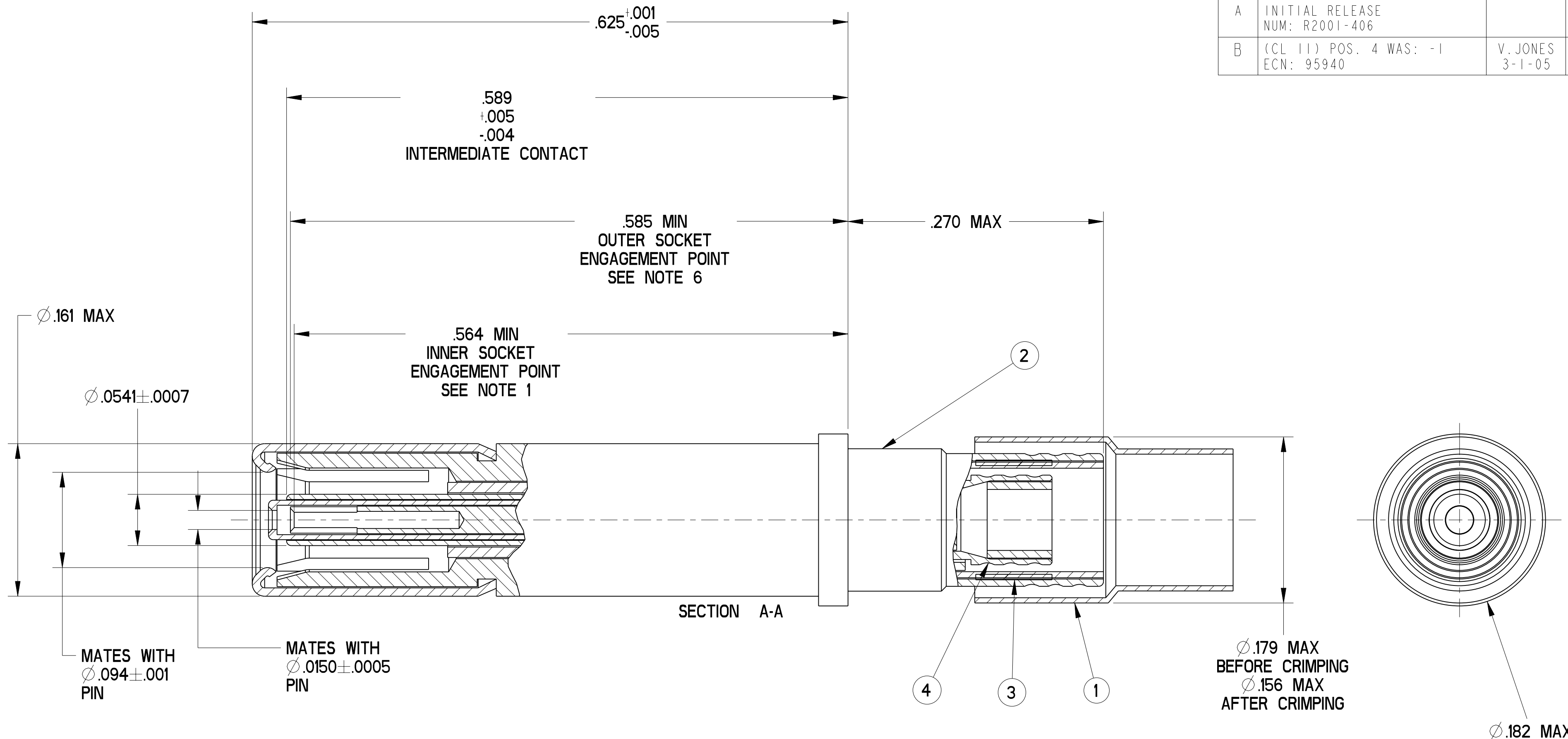


REVISIONS			
LTR	DESCRIPTION	DATE	APPVD
A	INITIAL RELEASE NUM: R2001-406		
B	(CL 11) POS. 4 WAS: -1 ECN: 95940	V. JONES 3-1-05	



- 6. INDICATED DIMENSION IS FROM THE REAR OF THE OUTER CONTACT SHOULDER TO THE POINT AT WHICH A $\varnothing.0940 \pm .0002$ SQUARE ENDED PIN ENGAGES THE OUTER SOCKET CONTACT SPRING.
- 5. MATES WITH TWINAX & TRIAX PIN CONTACTS 21-33909-XX (JN1104-75T INTERFACE).
- 4. TERMINATES TWINAX CABLE EPD32263A OR EQUIVALENT.
- 3. INDICATED COMPONENT IS NOT ILLUSTRATED. COMPLETE INSTALLATION INSTRUCTIONS PACKAGED WITH EACH ASSEMBLY. PACKAGE PER PRODUCTION PROCESS SHEET.
- 2. PROCESS SPEC:
TEST 9-5272-36
- 1. INDICATED DIMENSION IS FROM THE REAR OF THE OUTER CONTACT SHOULDER TO THE POINT AT WHICH A $\varnothing.0150 \pm .0002$ SQUARE ENDED PIN ENGAGES THE INNER SOCKET CONTACT SPRING.

NOTES:

THE USE OF THIS DOCUMENT IS UNLIMITED. HOWEVER, DOCUMENTS REFERENCED HEREON MAY CONTAIN LIMITED RIGHTS DATA.

COMPANY ID:	9	CODED/MS/CUST:	N	N/A
INTERNAL:	N	LOT NO.:	N	
DATE CODE:	N	SEE DRAW:	N	N/A
STAMPING DATA		NEXT ASSEMBLY		

POS	QTY	PART NUMBER	DESCRIPTION	NOTE
5	1	L-2092-H	INSTALLATION INSTRUCTIONS	3
4	1	21-33603-11	INNER CONTACT ASSEMBLY	
3	1	21-33765-66	FERRULE, INTERMEDIATE	
2	1	21-33750-4	OUTER CONTACT ASSEMBLY	
1	1	21-33765-55	FERRULE, OUTER	

UNLESS OTHERWISE SPECIFIED	SPECIFICATIONS	PROV	APPROVALS	DATE	PARTS LIST				
LINEAR DIMENSIONS ARE IN INCHES TOLERANCES: .XXXX = $\pm .0005$.XXX = $\pm .010$.XX = $\pm .03$.X = $\pm .1$ ANGLES = $\pm 2^\circ$ OTHER STANDARDS PER 9-3800 AND DOD-D-1000 THIRD ANGLE PROJECTION	MATERIAL SPEC.	N/A	PREPARED	RATCHFORD	07-Dec-00	AMPHENOL CORPORATION <small>SIDNEY, N.Y. 13838</small> CONTACT, SOCKET, TWINAX, ELECTRICAL CONNECTOR, TYPE LJT-R, SIZE 12			
	PROCESS SPEC.	SEE NOTE 2	CHECKED	L. RATCHFORD	10-22-01				
			APPROVED	AL DAVIS	10-26-01	SIZE	FSCM NO.	DOCUMENT NO.	REV.
			APPROVED	L. RATCHFORD	10-22-01	C	77820	21-33908-29	B
					SCALE: 12.0	REF: 21-33908-12	SHEET 1 OF 1		

FAMCODES DATA3: FALSE CICS: FALSE

21-33908-29

U